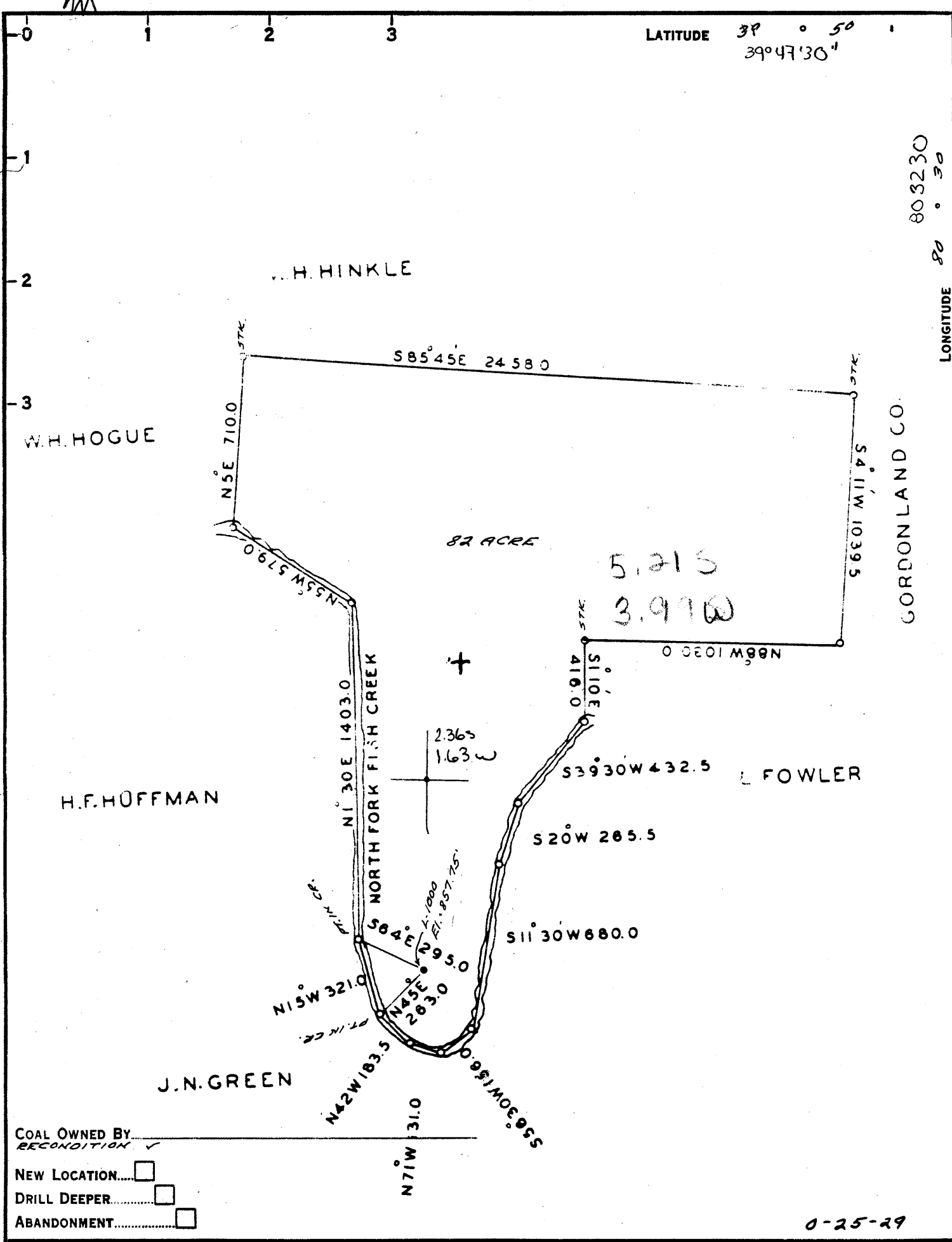


P



COAL OWNED BY _____
 RECONDITION
 NEW LOCATION
 DRILL DEEPER
 ABANDONMENT

0-25-29

COMPANY THE MANUFACTURERS LIGHT & HEAT
 ADDRESS 800 UNION TRUST BLDG. PCH. PA.
 FARM S.M. SPRAGG
 TRACT _____ ACRES 82 LEASE No. 21456
 WELL (FARM) No. 1 SERIAL No. 1000
 ELEVATION (SPIRIT LEVEL) 857.75
 QUADRANGLE CAMERON SE
 COUNTY MARSHALL DISTRICT LIBERTY
 ENGINEER Robert M. Neill
 ENGINEER'S REGISTRATION No. 361-E (DKB)
 FILE No. _____ DRAWING No. V-15-966
 DATE 15 JUNE 1959 SCALE 1"=500'

STATE OF WEST VIRGINIA
 DEPARTMENT OF MINES
 OIL AND GAS DIVISION
 CHARLESTON

WELL LOCATION MAP

FILE No. MARS-353-R
 (Storage)

+ DENOTES LOCATION OF WELL ON UNITED STATES TOPOGRAPHIC MAPS, SCALE 1 TO 62,500. LATITUDE AND LONGITUDE LINES BEING REPRESENTED BY BORDER LINES AS SHOWN.
 - DENOTES ONE INCH SPACES ON BORDER LINE OF ORIGINAL TRACING.

9-0 25



STATE OF WEST VIRGINIA
DEPARTMENT OF MINES
OIL AND GAS DIVISION

Quadrangle Cameron

Permit No. MARS-353-REDRILL

WELL RECORD

Oil or Gas Well storage
GAS
(KIND)

Company <u>The Manufacturers Light and Heat Company</u>	Casing and Tubing	Used in Drilling	Left in Well	Packers
Address <u>800 Union Trust Bldg., Pittsburgh 19, Pa.</u>	Size			
Farm <u>S. M. Spragg</u> Acres <u>82</u>	16			Kind of Packer
Location (waters)	13			
Well No. <u>1000</u> Elev. <u>857.75'</u>	10 <u>3/4"</u> <u>846'</u>	<u>846'</u>	<u>846'</u>	Size of
District <u>Liberty</u> County <u>Marshall</u>	8 <u>5/8"</u> <u>1030'</u>	<u>1030'</u>	<u>1030'</u>	Depth set
The surface of tract is owned in fee by	6 <u>7/8"</u> <u>1777'</u>	<u>1777'</u>	<u>1777'</u>	
Address	5 <u>3/16"</u>			Perf. top
Mineral rights are owned by	3			Perf. bottom
Address	2			Perf. top
Drilling commenced <u>October 15, 1959</u>	Liners Used			Perf. bottom
Drilling completed <u>March 10, 1960</u>				
Date Shot From To				
With				

Open Flow <u>10ths Water in</u> <u>10th</u>	CASING CEMENTED <u>10 3/4" SIZE</u> <u>300 No. 14.3 LBS.</u>
<u>10ths Merc. in</u> <u>10th</u>	SIZE <u>8 5/8"</u> <u>225 NO.</u> <u>14.2 LBS.</u>
Volume <u>3 1/2</u> Cu. Ft.	<u>7"</u> <u>250</u>
Rock Pressure <u>3 1/2</u> lbs. <u>48</u> hrs.	COAL WAS ENCOUNTERED AT <u>612 FEET</u> <u>14.3 INCHES</u>
Oil <u>bbls., 1st 24 hrs.</u>	<u>FEET INCHES FEET INCHES</u>
Fresh water <u>feet</u> <u>feet</u>	<u>FEET INCHES FEET INCHES</u>
Salt water <u>feet</u> <u>feet</u>	

Formation	Color	Hard or Soft-THICKNESS	Top	Bottom	Oil, Gas or Water	Depth Found	Remarks
✓ Pittsburgh Coal		6	612	618			
✓ Maxton Sand		40	1604	1644			
✓ Lower Maxton Sand		13	1722	1735			
✓ Big Lime			1748				
✓ Big Injun Sand			Not logged to bottom				
7" Shoe set at TOTAL DEPTH				1777 2000	1748 858 890		

