

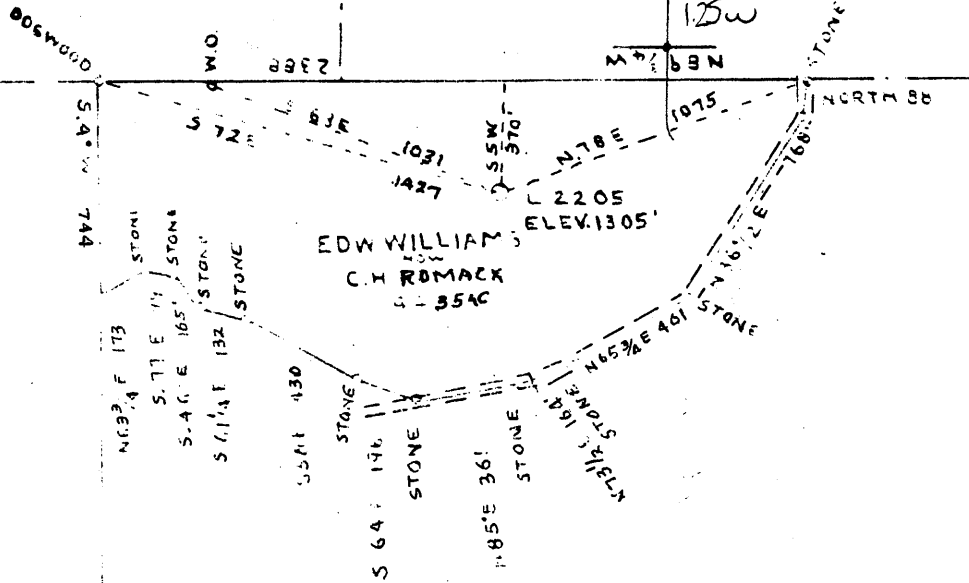
LATITUDE 39 ° 50

39°47'30"

LONGITUDE 80 ° 35

J G CRAWFORD

J H MACKEY



JOSEPH WHIRKEY

COAL OWNED BY \_\_\_\_\_  
 RECONDITION \_\_\_\_\_  
 NEW LOCATION.....   
 DRILL DEEPER.....   
 ABANDONMENT.....

30187 9/0

0-25-28

COMPANY THE MANUFACTURERS LIGHT & HEAT  
 ADDRESS 800 UNION TRUST BLDG. PGH. PA.  
 FARM C.F. WILLIAMS  
 TRACT \_\_\_\_\_ ACRES 45 LEASE No. 2695T  
 WELL (FARM) No. 1 SERIAL No. 2205  
 ELEVATION (SPIRIT LEVEL) 1305  
 QUADRANGLE CAMERON - 5C  
 COUNTY MARSHALL DISTRICT LIBERTY  
 ENGINEER Thomas E. Virgin M.  
 ENGINEER'S REGISTRATION No. 1503  
 FILE No. \_\_\_\_\_ DRAWING No. Y-15-972  
 DATE 18 JUNE 59 SCALE 1" = 660'

STATE OF WEST VIRGINIA  
 DEPARTMENT OF MINES  
 OIL AND GAS DIVISION  
 CHARLESTON

### WELL LOCATION MAP

FILE No. MARS-354

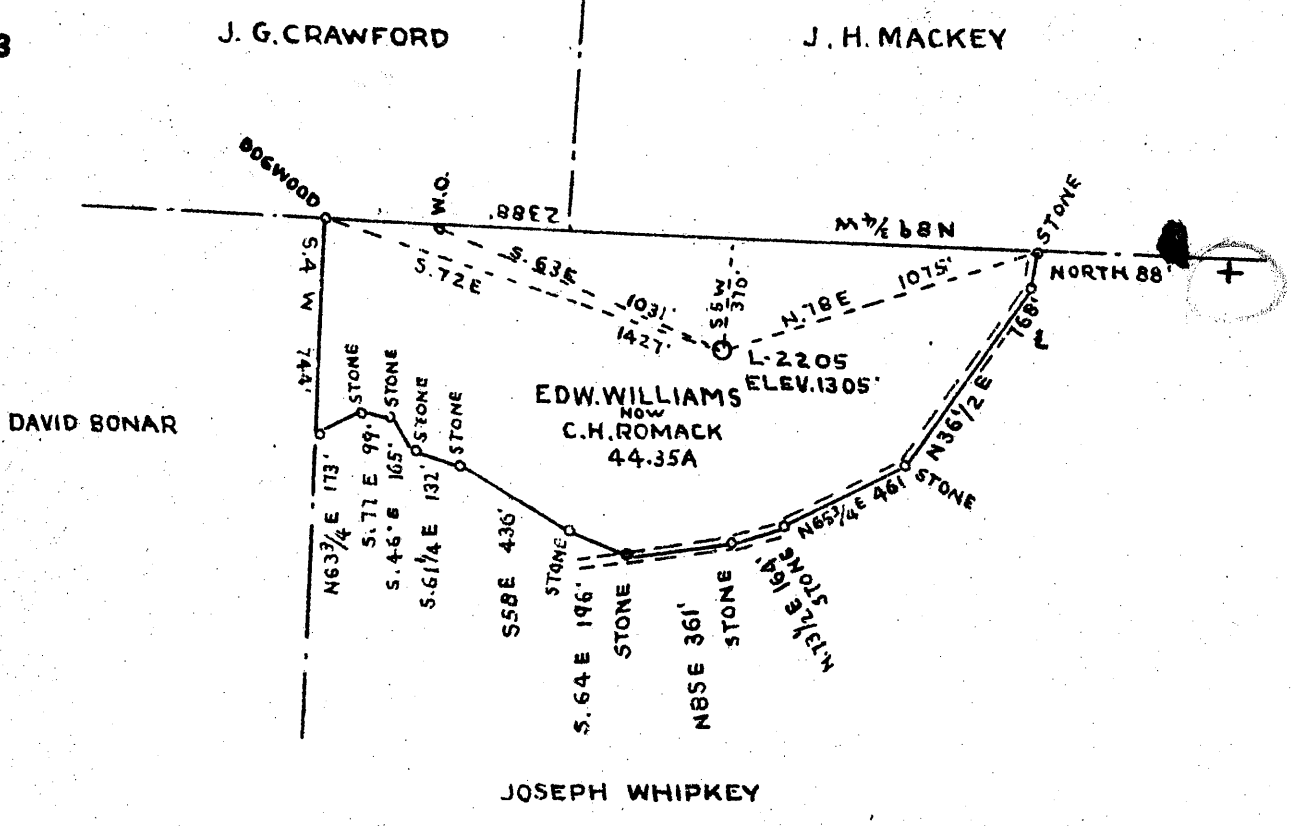
+ DENOTES LOCATION OF WELL ON UNITED STATES TOPO-  
 GRAPHIC MAPS. SCALE 1 TO 62,500. LATITUDE AND LONGITUDE  
 LINES BEING REPRESENTED BY BORDER LINES AS SHOWN.

- DENOTES ONE INCH SPACES ON BORDER LINE OF ORIGINAL  
 TRACING.

*too crowded to plot*

Latitude 39 50

Longitude 80 35



COAL OWNED BY BELTON FUEL COMPANY

4.235  
1.20W  
4.3 R

OCT - 6 1942

- New Location:
- Drill Deeper:
- Abandonment:

Company THE MANUFACTURERS LIGHT AND HEAT CO.  
 Address 800 UNION TRUST BLDG. PITTSBURGH PA.  
 Farm EDW. WILLIAMS ET. UX.  
 Tract \_\_\_\_\_ Acres 44.35 Lease No. 2237  
 Well (Farm) No. 1 Serial No. 2205  
 Elevation (Spirit Level) 1305'  
 Quadrangle CAMERON S.E. 1/4  
 County MARSHALL District LIBERTY  
 Engineer J. L. Mercer  
 Engineer's Registration No. \_\_\_\_\_  
 File No. Q-25-28 BK. 24-55 Drawing No. Y-10-199  
 Date SEPTEMBER 22-42 Scale 1" = 660'

STATE OF WEST VIRGINIA  
 DEPARTMENT OF MINES  
 OIL AND GAS DIVISION  
 CHARLESTON

WELL LOCATION MAP

File No. MARS-187-A → 354

+ Denotes location of well on United States Topographic Maps, scale 1 to 62,500, latitude and longitude lines being represented by border lines as shown.

- Denotes one inch spaces on border line of original tracing.

EDW. WILLIAMS ET UX NO. 1 (2205) - MAN. L. & H. CO. - MARS-187-



STATE OF WEST VIRGINIA  
DEPARTMENT OF MINES  
OIL AND GAS DIVISION

Quadrangle Cameron  
Permit No. MARS-354-R

**WELL RECORD**

Storage  
Oil or Gas Well GAS  
(KIND)

Company <u>The Manufacturers Light and Heat Company</u>	Casing and Tubing	Used in Drilling	Left in Well	Packers
Address <u>800 Union Trust Building, Pittsburgh 19, Pa.</u>	Size			Kind of Packer
Farm <u>C. F. Williams</u> Acres <u>45</u>	16			
Location (waters)	13			
Well No. <u>2205</u> Elev. <u>1305'</u>	10 "	247	247	Size of
District <u>Liberty</u> County <u>Marshall</u>	8 1/4 "	912	1223	Depth set
The surface of tract is owned in fee by	6 3/8 7 "	1933	1964	
Address	5 3/16			
Mineral rights are owned by	3			Perf. top
Address	2			Perf. bottom
Drilling commenced <u>June 16, 1959</u>	Liners Used			Perf. top
Drilling completed <u>August 21, 1959</u>				Perf. bottom
Date Shot From To				
With				
Open Flow /10ths Water in Inch				
/10ths Merc. in Inch				
Volume <u>35,062</u> Cu. Ft.				
Rock Pressure <u>5 1/2</u> lbs. <u>48</u> hrs.				
Oil bbls., 1st 24 hrs.				
Fresh water feet feet				
Salt water feet feet				
Thickness				

CASING CEMENTED	SIZE	No. Ft.	Date
COAL WAS ENCOUNTERED AT	FEET	INCHES	
	FEET	INCHES	
	FEET	INCHES	

Formation	Color	xxxxxxx xHARD OF Softx	Top	Bottom	Oil, Gas or Water	Depth Found	Remarks
Schlumberger Well Survey							
✓Pittsburgh Coal		9	819	828			All pipe measured over threads. Run 247' of 10 3/4" Casing, Sm.H. 32.75# on a steel shoe. Run 912' of 8 5/8" Casing, SM. J. 24# and connected it to 311' of original 8" casing with a steel die nipple. Cemented with 300 bags of cement, 14.4 Lbs. per gallon, 5 bags Aquagel and 25# Hydrotan. Good return of cement around both the 8 5/8" and 10 3/4" casings at the surface. Run 1933' of 7" Casing, SM. J. 20# on a steel shoe set at 1920'. Cemented with 250 bags of cement, 14.3 Lbs. per gallon. No return of cement at the surface. Old 7" casing was left in hole from 1922' to 1945'. The 7" was sounded out, the cement was 300' from top of hole. Drilled the Injun Sand down from 2073' to 2200'. Total depth of hole 2200'.
✓Big Dunkard Sand		33	1346	1379			
✓Big Lime			1898				
✓Big Injun (Not drilled thru)				2200			
Total Depth				2200			
7" Shoe set at				1920			
Old 7" left in hole			1922	1945			

STATE OF WEST VIRGINIA  
DEPARTMENT OF MINES  
OIL AND GAS DIVISION

234

Ab 187A → 35U  
Drilled in 1918

WELL RECORD

Oil or Gas Well Gas  
(KIND)

Permit No. ....

Company The Mfrs. Light & Heat Co.  
Address 800 Union Trust Bldg., Pittsburgh, Pa.  
Farm Edw. Williams Acres 44.35  
Location (waters) 1-2205  
Well No. Liberty Elev. 1305 ft.  
District Liberty County Marshall  
The surface of tract is owned in fee by M E Williams  
% Welty Vencel Address Box 3, McGrann, Pa  
Mineral rights are owned by The Mfrs. Light & Heat Co.  
800 Union Trust Bldg., Pittsburgh, Pa.  
Address Pittsburgh, Pa.  
Drilling commenced 10/4/18  
Drilling completed 11/7/18  
Date shot ..... Depth of shot .....

Casing and Tubing	Used in Drilling	Left in Well	Packers
Size			
16			Kind of Packer.....
13			
10	245	245	Size of.....
8 1/4	1223' 4"	1223' 4"	6 5/8 x 4"
6%	1964'	1964'	Depth set.....
5 3/16			2027'
3 1/2		2085' 4"	Perf. top.....
2			Perf. bottom.....
Liners Used.....			Perf. top.....
			Perf. bottom.....

Open Flow /10ths Water in ..... Inch  
/10ths Merc. in ..... Inch  
Volume ..... Cu. Ft.  
Rock Pressure 487 lbs. 20 hrs.  
Oil ..... bbls., 1st 24 hrs.  
Fresh water ..... feet ..... feet  
Salt water ..... feet ..... feet

CASING CEMENTED ..... SIZE ..... No. Ft. .... Date  
COAL WAS ENCOUNTERED AT 375 FEET 60 INCHES  
470 FEET 60 INCHES 545 FEET 84 INCHES  
830 FEET 84 INCHES ..... FEET ..... INCHES

Formation	Color	Hard or Soft	Top	Bottom	Oil, Gas or Water	Depth Found	Remarks
Rock, Slate, Lime			0	375	245' - 10"		
Coal			375	380			
Slate & Lime			380	470			
Coal			470	475			
Lime			475	505			
Sand			505	545			
Coal			545	552			
Lime, Slate, Rock			552	745			
Coal			745	750			
Slate & Lime			750	830			
P G Coal			830	837			
Slate, Lime, Rock			837	940			
Sand			940	980			
Slate, Lime, Rock			980	1045			
Sand			1045	1060			
Slate, Lime, Rock			1060	1223	1223' - 5 1/2"		
Little Dunkard			1223	1238			
Slate, Lime, Rock			1238	1330			
Big Dunkard			1330	1380			
Slate, Lime			1380	1430			
Sand			1430	1460			
Slate & Lime			1460	1518			
Sand			1518	1560			
Slate & Lime			1560	1660			
Salt Sand			1660	1690			
Broken Sand			1690	1750			
Sand			1750	1770			
Slate & Lime			1770	1850			
Sand (Maron)			1850	1915			
Pencil Cave			1915	1920			
Big Lime			1920	1976	1964' - 6 7/8"		
Big Sand			1976	-			
Total depth				2073			

Formation	Color	Hard or Soft	Top	Bottom	Oil, Gas or Water	Depth Found	Remarks

Date..... **September 25.** ....., 194...**2**

APPROVED..... **THE MANUFACTURERS LIGHT & HEAT CO.** ....., Owner

By..... *Harry H. Fowler* .....,  
 Land Dept. (Title) Office Mgr.