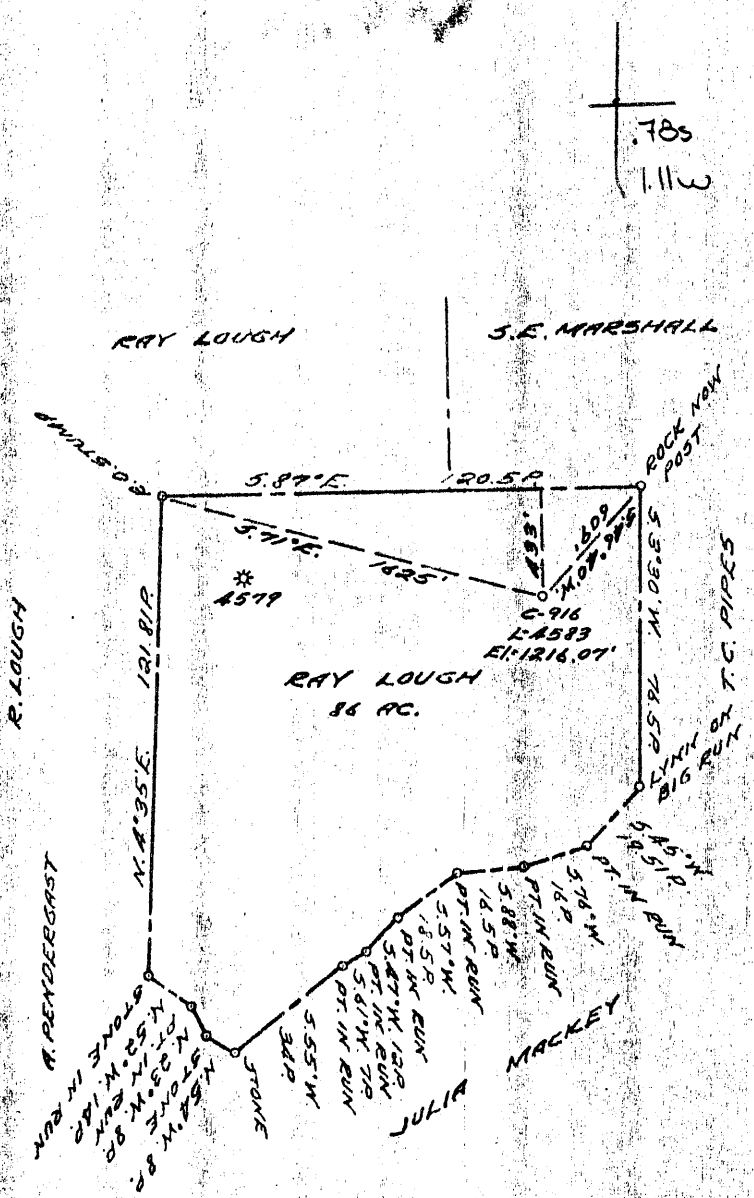


LATITUDE 39 ° 50

39° 47' 30"

LONGITUDE 80 ° 35'



COAL OWNED BY RECONSTRUCTION

NEW LOCATION

DRILL DEEPER

ABANDONMENT  issued 7-23-69

0-25-75

COMPANY THE MANUFACTURERS LIGHT & HEAT

ADDRESS 15219 800 UNION TRUST BLDG. PGH. PA.

FARM RAY LOUGH

TRACT ACRES 86 LEASE No. 26225

WELL (FARM) No. 2 SERIAL No. C-916 4583

ELEVATION (SPIRIT LEVEL) 1216.07'

QUADRANGLE CAMERON SC

COUNTY MARSHALL DISTRICT LIBERTY

ENGINEER John A. Jordan

ENGINEER'S REGISTRATION No. 12710

FILE No. \_\_\_\_\_ DRAWING No. Y-25-75

DATE 17 FEB. 1960 SCALE 1" = 800'

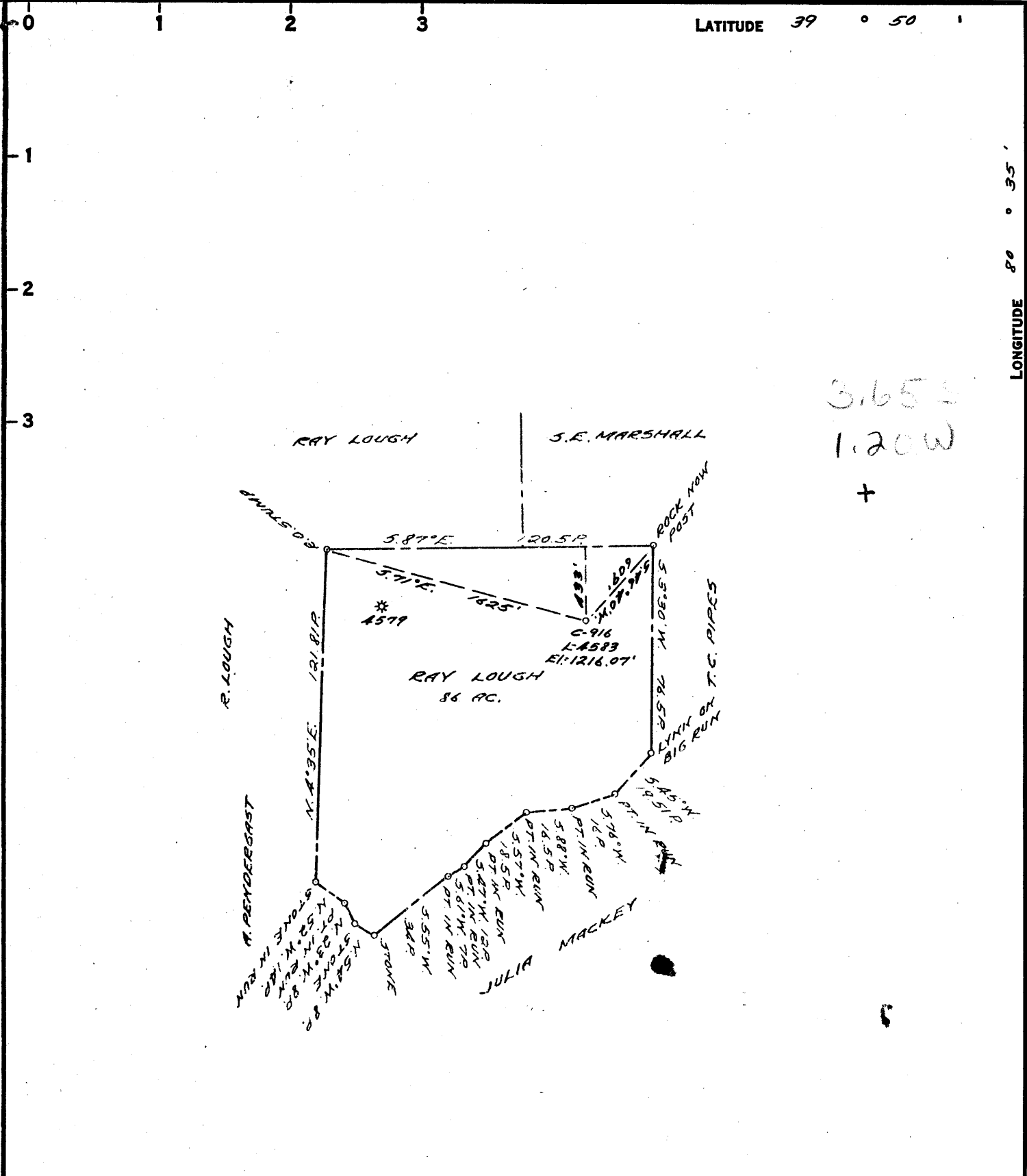
STATE OF WEST VIRGINIA  
DEPARTMENT OF MINES  
OIL AND GAS DIVISION  
CHARLESTON

WELL LOCATION MAP

FILE No. MARS-373-R-P

+ DENOTES LOCATION OF WELL ON UNITED STATES TOPOGRAPHIC MAPS, SCALE 1 TO 62,500. LATITUDE AND LONGITUDE LINES BEING REPRESENTED BY BORDER LINES AS SHOWN.

- DENOTES ONE INCH SPACES ON BORDER LINE OF ORIGINAL TRACING.



3.653  
1.20W  
+

COAL OWNED BY \_\_\_\_\_  
RECONDITION \_\_\_\_\_  
NEW LOCATION.....  
DRILL DEEPER.....  
ABANDONMENT.....

0-25-28

COMPANY THE MANUFACTURERS LIGHT & HEAT  
ADDRESS 800 UNION TRUST BLDG. PGH. PA.  
FARM RAY LOUGH  
TRACT \_\_\_\_\_ ACRES 86 LEASE No. 26425  
WELL (FARM) No. 2 SERIAL No. C-916 L-4583  
ELEVATION (SPIRIT LEVEL) 1216.07'  
QUADRANGLE CAMERON - SC  
COUNTY MARSHALL DISTRICT LIBERTY  
ENGINEER John A. Loudon  
ENGINEER'S REGISTRATION No. 12710  
FILE No. \_\_\_\_\_ DRAWING No. Y-25-75  
DATE 17 FEB. 1960 SCALE 1" = 800'

STATE OF WEST VIRGINIA  
DEPARTMENT OF MINES  
OIL AND GAS DIVISION  
CHARLESTON

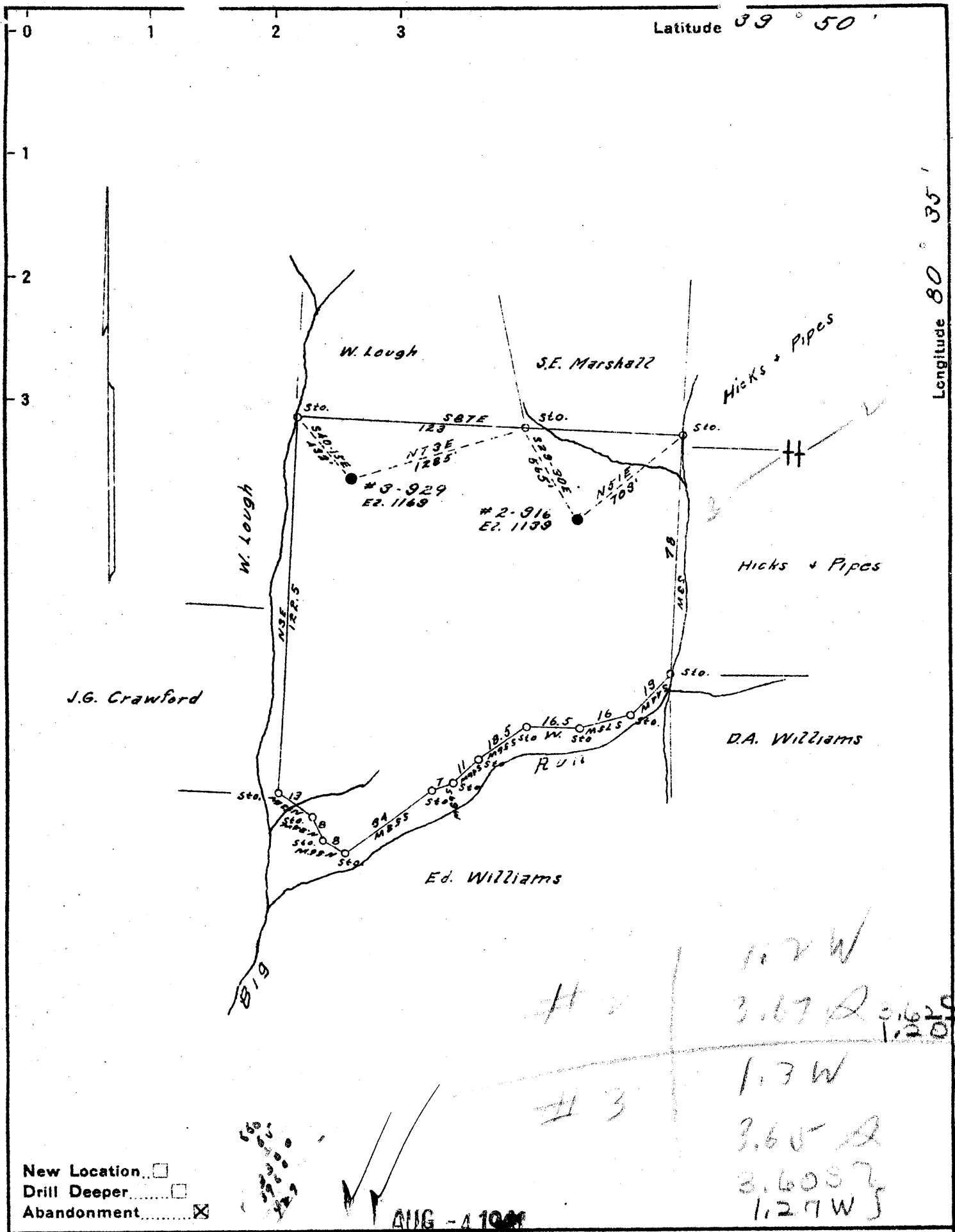
WELL LOCATION MAP

FILE No. MARS-373-R  
(Storage)

+ DENOTES LOCATION OF WELL ON UNITED STATES TOPOGRAPHIC MAPS, SCALE 1 TO 62,500. LATITUDE AND LONGITUDE LINES BEING REPRESENTED BY BORDER LINES AS SHOWN.

- DENOTES ONE INCH SPACES ON BORDER LINE OF ORIGINAL TRACING.

too crowded to plot





STATE OF WEST VIRGINIA  
DEPARTMENT OF MINES  
OIL AND GAS DIVISION

Quadrangle Cameron

WELL RECORD

Storage  
GAS

Permit No. MARS-373-R

Oil or Gas Well GAS  
(KIND)

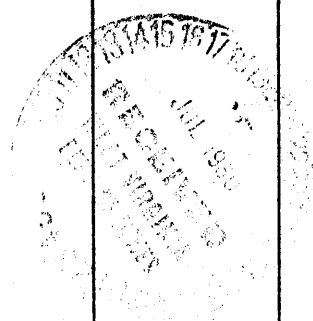
Company The Manufacturers Light and Heat Company  
Address 800 Union Trust Bldg., Pittsburgh 19, Pa.  
Farm Ray Lough Acres 86  
Location (waters) \_\_\_\_\_  
Well No. L-4583 Elev. 1216.07'  
District Liberty County Marshall  
The surface of tract is owned in fee by \_\_\_\_\_  
Address \_\_\_\_\_  
Mineral rights are owned by \_\_\_\_\_  
Address \_\_\_\_\_  
Drilling commenced March 25, 1960  
Drilling completed June 21, 1960  
Date Shot 6/30/60 From Big Injun To \_\_\_\_\_  
With Orifice Well Tester

Casing and Tubing	Used in Drilling	Left in Well	Packers
Size			
16			Kind of Packer
13			
10 3/4"	147'	147'	Size of
8 1/2 5/8"	934'	1124'	
6 3/4 7"	1356'	1982'	Depth set
5 3/8 4 1/2"	2021'	2021'	
8			Perf. top
2			Perf. bottom
Liners Used			Perf. top
			Perf. bottom

Open Flow no/10ths Water in 1/4 Inch  
/10ths Merc. in \_\_\_\_\_ Inch  
Volume None Cu. Ft.  
Rock Pressure 5 lbs. 5 days hrs  
Oil \_\_\_\_\_ bbls., 1st 24 hrs.  
Fresh water \_\_\_\_\_ feet  
Salt water \_\_\_\_\_ feet

CASING CEMENTED \_\_\_\_\_ SIZE \_\_\_\_\_ No. Ft. \_\_\_\_\_ Date \_\_\_\_\_  
COAL WAS ENCOUNTERED AT 904 FEET \_\_\_\_\_ INCHES  
\_\_\_\_\_ FEET \_\_\_\_\_ INCHES FEET \_\_\_\_\_ INCHES  
\_\_\_\_\_ FEET \_\_\_\_\_ INCHES FEET \_\_\_\_\_ INCHES

Formation	Color	Hard or Soft	Top	Bottom	Oil, Gas or Water	Depth Found	Remarks
		THICKNESS					
✓Pittsburgh Coal		8	904	912			
✓Big Dunkard Sand		108	1380	1488			
✓Big Lime			2010				
✓Big Injun Sand				2304			
Old 7" Casing		624	1358	1982	On Original	Shoulder	
Set New 8" at				1354			
Set New 4-1/2" at				2021		2010 1216 794	
Plug Back To				2280			
TOTAL DEPTH				2280			



WEST VIRGINIA DEPARTMENT OF MINES  
OIL AND GAS DIVISION

709

WELL RECORD

Permit No. 161A

Oil or Gas Well OIL  
(Kind)

WELL TO BE ABANDONED.

Company CARNEGIE NATURAL GAS COMPANY  
 Address 1011 FRICK BUILDING, PITTSBURGH, PA.  
 Farm WM. C. FISH Acres 86 1/2  
 Location (waters) BIG RUN  
 Well No. 2-916 Elev. 1139  
 District LIBERTY County MARSHALL  
 The surface of tract is owned in fee by GEO. E. FISH  
 Address CAMERON, W. VA.  
 Mineral rights are owned by GEO. E. FISH  
 Address CAMERON, W. VA.  
 Drilling commenced 4-15-19  
 Drilling completed 6-4-19  
 Date shot SEE BELOW Depth of shot \_\_\_\_\_  
 Open Flow /10ths Water in \_\_\_\_\_ Inch  
 /10ths Merc. in \_\_\_\_\_ Inch  
 Volume \_\_\_\_\_ Cu. Ft.  
 Rock Pressure \_\_\_\_\_ lbs. \_\_\_\_\_ hrs.  
 Oil \_\_\_\_\_ bbls., 1st 24 hrs.  
 Fresh water 1115 feet \_\_\_\_\_ feet  
 Salt water \_\_\_\_\_ feet \_\_\_\_\_ feet

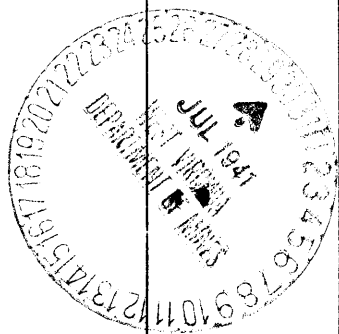
Casing and Tubing	Used in Drilling	Left in Well	Packers
Size			
16.			Kind of Packer
13.			
10.			Size of
8 3/4.		<u>1125'</u>	
6 5/8.		<u>1997'</u>	Depth set
5 3/16.			
3.			Perf. top
2.		<u>2959'</u>	Perf. bottom
Liners Used			Perf. top
			Perf. bottom

CASING CEMENTED \_\_\_\_\_ SIZE \_\_\_\_\_ No. FT. \_\_\_\_\_ Date \_\_\_\_\_  
 COAL WAS ENCOUNTERED AT 905 FEET \_\_\_\_\_ INCHES  
 \_\_\_\_\_ FEET \_\_\_\_\_ INCHES FEET \_\_\_\_\_ INCHES  
 \_\_\_\_\_ FEET \_\_\_\_\_ INCHES FEET \_\_\_\_\_ INCHES

Formation	Color	Hard or Soft	Top	Bottom	Oil Gas or Water	Depth Found	Remarks
Pittsburgh Coal			905'	910'			
Murphy Sand			1095	1125	Show of Gas Water	1110' 1115'	
Little Dunkard			1315	1330			
Big Dunkard			1375	1560	Show of Gas	1455'	
1st Salt Sand			1825	1890			
Maxon Sand			1942	1985			
Big Lime			1990	2010			
Big Injun			2010	2375	Show of Gas	2005 and 2013'	
					Show of Oil	2031 and 2033'	
50-Foot Sand			2836	2866	Show of Gas	2856'	
Gordon Sand			2903	2934	Oil	2905'-2908'.	
			<b>TOTAL DEPTH</b>	<b>2959'</b>			

SHOOTING RECORD

6-6-19 -- 2904' - 2912'  
 12-14-20 -- 2903' - 2909'  
 8-11-25 -- 2904' - 2909'



Formation	Color	Hard or Soft	Top	Bottom	Oil, Gas or Water	Depth Found	Remarks

Date..... **JULY 28,** ....., 19**41**

APPROVED..... **CARNEGIE NATURAL GAS COMPANY** ....., Owner

By..... *D. H. Archer* .....,  
 (Title) **Land Agent.**