

COAL OWNED BY Consol. Coal Co
~~RECONSTRUCTION~~
 NEW LOCATION
 DRILL DEEPER
 ABANDONMENT issued 9-16-70

0-25-29

COMPANY THE MANUFACTURERS LIGHT & HEAT CO.
 ADDRESS 800 UNION TRUST BLDG. PGH. PA.
 FARM MAGGIE HARRIS
 TRACT _____ ACRES 44 LEASE No. 27673
 WELL (FARM) No. 1 SERIAL No. 4578
 ELEVATION (SPIRIT LEVEL) 1968.20'
 QUADRANGLE CAMERON 50
 COUNTY MARSHALL DISTRICT LIBERTY
 ENGINEER Robert M. Neill
 ENGINEER'S REGISTRATION No. 361-E (J1.)
 FILE No. _____ DRAWING No. Y-25 171
 DATE 6 MAY 1960 SCALE 1" = 800'

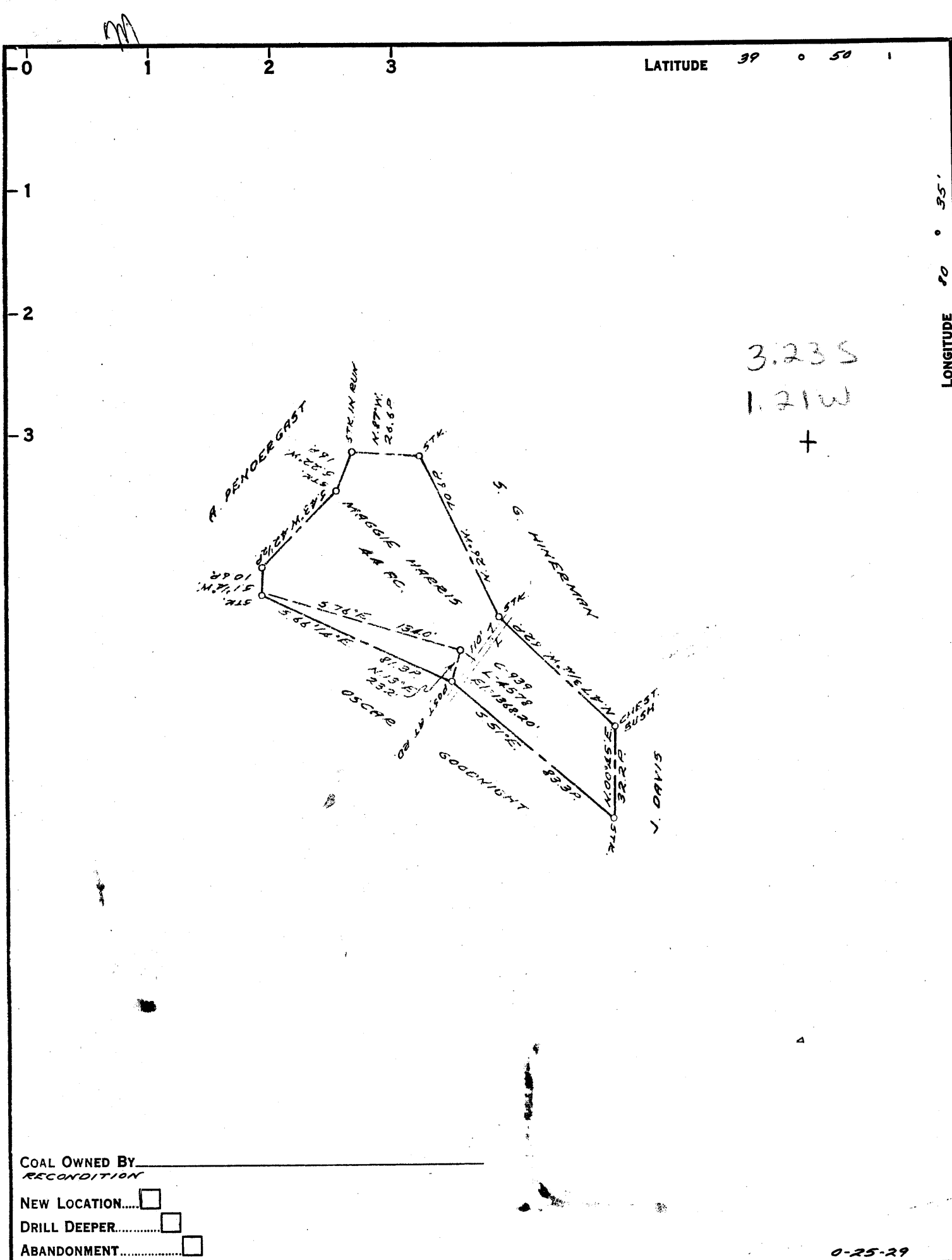
STATE OF WEST VIRGINIA
 DEPARTMENT OF MINES
 OIL AND GAS DIVISION
 CHARLESTON

WELL LOCATION MAP

FILE No. MAES-386-R-P

+ DENOTES LOCATION OF WELL ON UNITED STATES TOPOGRAPHIC MAPS, SCALE 1 TO 62,500. LATITUDE AND LONGITUDE LINES BEING REPRESENTED BY DOTTED LINES ON ORIGINAL TRACING.

- DENOTES ONE INCH SPACES ON BORDERS LINE OF ORIGINAL TRACING.



COAL OWNED BY _____
 RECONDITION _____
 NEW LOCATION.....
 DRILL DEEPER.....
 ABANDONMENT.....

0-25-29

COMPANY THE MANUFACTURERS LIGHT & HEAT CO.
 ADDRESS 800 UNION TRUST BLDG. PGH. PA.
 FARM MAGGIE HARRIS
 TRACT _____ ACRES 44 LEASE No. 27673
 WELL (FARM) No. 1 SERIAL No. 4578
 ELEVATION (SPIRIT LEVEL) 1368.20'
 QUADRANGLE CAMERON SC
 COUNTY MARSHALL DISTRICT LIBERTY
 ENGINEER Robert M. Hall
 ENGINEER'S REGISTRATION No. 361-E (J.F.)
 FILE No. _____ DRAWING No. Y-25-171
 DATE 6 MAY 1960 SCALE 1" = 800'

STATE OF WEST VIRGINIA
 DEPARTMENT OF MINES
 OIL AND GAS DIVISION
 CHARLESTON

WELL LOCATION MAP

FILE No. TMARS-386-R

+ DENOTES LOCATION OF WELL ON UNITED STATES TOPO-
 GRAPHIC MAPS. SCALE 1 TO 62,500. LATITUDE AND LONGITUDE
 LINES BEING REPRESENTED BY BORDER LINES AS SHOWN.
 — DENOTES ONE INCH SPACES ON BORDER LINE OF ORIGINAL
 TRACING.



STATE OF WEST VIRGINIA
DEPARTMENT OF MINES
OIL AND GAS DIVISION

CAMERON

Quadrangle _____

WELL RECORD

Permit No. MARS-386-R

Oil or Gas Well GAS STORAGE
(KIND)

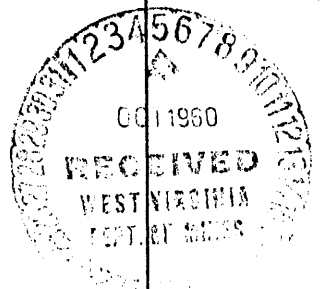
Company The Manufacturers Light and Heat Co.
Address 800 Union Trust Bldg., Pittsburgh 19, Pa.
Farm Maggie Harris Yeater Acres 44
Location (waters) _____
Well No. 4578 Elev. 1368.20'
District Liberty County Marshall
The surface of tract is owned in fee by _____
Address _____
Mineral rights are owned by _____
Address _____
Drilling commenced July 5, 1960
Drilling completed September 2, 1960
Date Shot _____ From _____ To _____
With _____
Open Flow _____ /10ths Water in _____ Inch
_____ /10ths Merc. in _____ Inch
Volume _____ Cu. Ft.
Rock Pressure 5 lbs. 4 days hrs.
Oil _____ bbls., 1st 24 hrs.
Fresh water _____ feet _____ feet
Salt water _____ feet _____ feet

Casing and Tubing	Used in Drilling	Left in Well	Packers
Size			Kind of Packer
16			
13			
10 3/4"	138'	138'	Size of
8 1/4 5/8"	1486'	1486'	
6 1/4 7"	2047'	2159'	Depth set
5 3/16			
3			Perf. top
2			Perf. bottom
Liners Used			Perf. top
			Perf. bottom

CASING CEMENTED _____ SIZE _____ No. Ft. _____ Date _____

COAL WAS ENCOUNTERED AT 1055 FEET _____ INCHES
_____ FEET _____ INCHES FEET _____ INCHES
_____ FEET _____ INCHES FEET _____ INCHES

Formation	Color	Hard or Soft	Top	Bottom	Oil, Gas or Water	Depth Found	Remarks
✓ Pittsburgh Coal		THICKNESS	1055	1064			
✓ Big Dunkard Sand		9	1543	1628			
✓ Maxton Sand		85	2046	2078			
✓ Lower Maxton Sand		32	2146	2152			
✓ Big Lime		6	2156				
✓ Big Injun Sand				2458			
Old 7" Casing		112	2047	2159	Left in Hole		
Set New 7" Casing				2047			
Plug Back to				2159			
Perforate 7" Casing		32	2048	2080	2156 1368 788		
also Perforate 7" Cas.		6	2148	2154			



LEVI RUSH NO. 1 (939) WELL. →

386

Liberty District, Marshall County, W. Va.

By Carnegie Natural Gas Co.

Map, Cameron SE.

On $\frac{1}{4}$ acres.

Drilling commenced Aug. 23, 1919; completed, Oct. 6, 1919.

Dry hole.

Record from Wilcox Sept. 27, 1939.

	Top.	Bottom.
Waynesburg Coal	770	- 774
Mapletown (Sewickley) Coal	950	- 955
Pittsburgh Coal	1043	- 1050
Little Dunkard (Murphy?) Sand	1156	- 1181
Big Dunkard Sand	1526	- 1546
1st Gas Sand	1700	- 1757
1st Salt Sand	1854	- 1860
2nd Salt Sand	2016	- 2031
Maxton Sand (show gas, 2116')	2096	- 2124
Little Lime	2138	- 2152
Pencil Cove	2152	- 2155
Big Lime	2155	- 2202
Big Injun Sand	2202	- 2462
Gordon Stray Sand (show gas, 3007')	3004	- 3029
Gordon Sand (show oil, 3064-67')	3059	- 3079
Total depth		3266