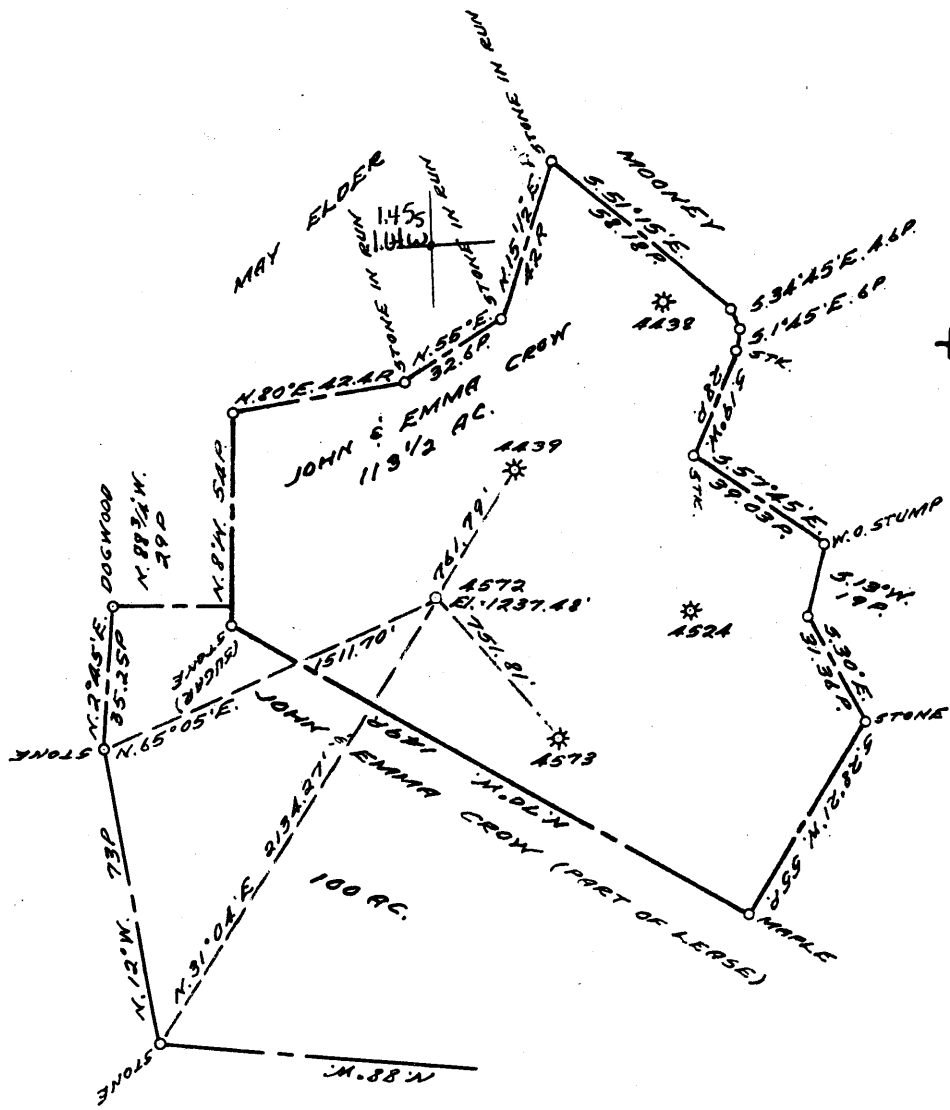


LATITUDE 40 0 00  
39°57'30"

LONGITUDE 80 0 30'



COAL OWNED BY \_\_\_\_\_

NEW LOCATION...  FOR STORAGE  
 DRILL DEEPER...   
 ABANDONMENT...

0-25-10

COMPANY THE MANUFACTURERS LIGHT & HEAT  
 ADDRESS 800 UNION TRUST BLDG. PGH. PA.  
 FARM JOHN & EMMA CROW  
 PART OF  
 TRACT \_\_\_\_\_ ACRES 330 LEASE No. L-2900  
 WELL (FARM) No. 9 SERIAL No. 4572  
 ELEVATION (SPIRIT LEVEL) 1237.48  
 QUADRANGLE CAMERON NE  
 COUNTY MARSHALL DISTRICT WEBSTER  
 ENGINEER Robert M. Heull  
 ENGINEER'S REGISTRATION No. 361-E (D.G.)  
 FILE No. \_\_\_\_\_ DRAWING No. Y-25-147  
 DATE 12 APR. 1960 SCALE 1"=800'

STATE OF WEST VIRGINIA  
 DEPARTMENT OF MINES  
 OIL AND GAS DIVISION  
 CHARLESTON

WELL LOCATION MAP

FILE No. MARS-392

+ DENOTES LOCATION OF WELL ON UNITED STATES TOPOGRAPHIC MAPS, SCALE 1 TO 62,500. LATITUDE AND LONGITUDE LINES BEING REPRESENTED BY BORDER LINES AS SHOWN.

- DENOTES ONE INCH SPACES ON BORDER LINE OF ORIGINAL TRACING.



STATE OF WEST VIRGINIA  
DEPARTMENT OF MINES  
OIL AND GAS DIVISION

Quadrangle CAMERON

WELL RECORD

Permit No. MARS-392

Oil or Gas Well Storage GAS  
(KIND)

Company The Manufacturers Light and Heat Co.  
Address 800 Union Trust Bldg., Pittsburgh 19,  
Farm John and Emma Crow Acres 330  
Location (waters) \_\_\_\_\_  
Well No. L-4572 Elev. 1237.48'  
District Webster County Marshall  
The surface of tract is owned in fee by \_\_\_\_\_  
Address \_\_\_\_\_  
Mineral rights are owned by \_\_\_\_\_  
Address \_\_\_\_\_  
Drilling commenced August 27, 1960  
Drilling completed January 27, 1961  
Date Shot \_\_\_\_\_ From \_\_\_\_\_ To \_\_\_\_\_  
With \_\_\_\_\_  
Open Flow \_\_\_\_\_ /10ths Water in \_\_\_\_\_ Inch  
12 /10ths Merc. in 4 Inch  
Volume 2,110,000 Cu. Ft.  
Rock Pressure 510 lbs. 72 hrs.  
Oil \_\_\_\_\_ bbls., 1st 24 hrs.  
Fresh water \_\_\_\_\_ feet \_\_\_\_\_ feet  
Salt water \_\_\_\_\_ feet \_\_\_\_\_ feet

Casing and Pa. Tubing	Used in Drilling	Left in Well	Packers
Size			
16			Kind of Packer
13 3/8"	68'10"	68'10"	
10 3/4"	734'	734'	Size of
8 1/2 5/8"	1348'4"	1348'4"	
6 1/2 7"	1684'9"	1684'9"	Depth set
5 3/16			
4 1/2"	1903'	1903'	Perf. top
2			Perf. bottom
Liners Used			Perf. top
			Perf. bottom

CASING CEMENTED \_\_\_\_\_ SIZE \_\_\_\_\_ No. Ft. \_\_\_\_\_ Date \_\_\_\_\_

COAL WAS ENCOUNTERED AT 699 FEET \_\_\_\_\_ INCHES  
\_\_\_\_\_ FEET \_\_\_\_\_ INCHES FEET \_\_\_\_\_ INCHES  
\_\_\_\_\_ FEET \_\_\_\_\_ INCHES FEET \_\_\_\_\_ INCHES

Formation	Color	Hard or Soft	Top	Bottom	Oil, Gas or Water	Depth Found	Remarks
		THICKNESS					
✓ Pittsburgh Coal		5	699	704			
Lime		7	732	739			
Sand		17	1342	1359			
✓ 1st Salt Sand		52	1460	1512	Gas - 1477' - 422,338cu.ft/with considerable water		
✓ 3rd Salt Sand		138	1632	1770	Water - 1493' (Hole full)		
✓ Top of Big Injun			1815		Water - 1692' - 1695' - 2 bailers per hr.		
TOTAL DEPTH				1903	Pays in Big Injun determined from Schlumberger Surveys		
					1st Pay - 1854' to 1857'		
					2nd Pay - 1872' to 1884'		
					Hole drilled from 1493' to 1685' (7" Csg. Pt.) with hole full aquagel.		
					Hole drilled from 1826' to Total Depth with hole full of 10# mud.		
					4 1/2" Tubing cemented above packer at 1817'1" to surface		