

LATITUDE 39 ° 50 ' 1
 LONGITUDE 80 ° 32' 30"

COAL OWNED BY _____

NEW LOCATION

BRILL DEEPER *Retest & Recondition*

ABANDONMENT *issued 12-7-70*

0-25-24

COMPANY THE MANUFACTURERS LIGHT & HEAT

ADDRESS 800 UNION TRUST BLDG. PEN. PA.

FARM C. A. BONAR

TRACT _____ ACRES 133 LEASE No. 26931

WELL (FARM) No. 2 SERIAL No. 3124

ELEVATION (SPIRIT LEVEL) 1081.03'

QUADRANGLE CAMERON SE

COUNTY MARSHALL DISTRICT LIBERTY

ENGINEER Robert M. Heell (J.E.E.)

ENGINEER'S REGISTRATION No. 361-E

FILE No. _____ DRAWING No. Y-25-211

DATE 15 AUG 1960 SCALE 1" = 800'

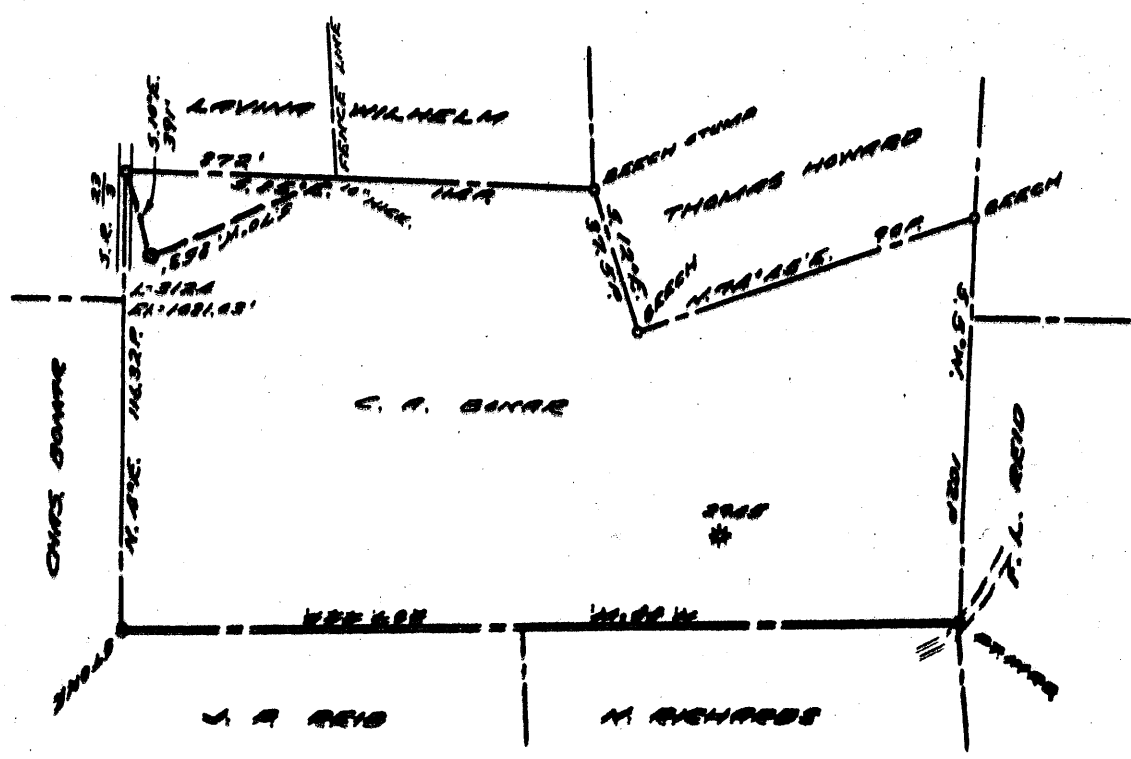
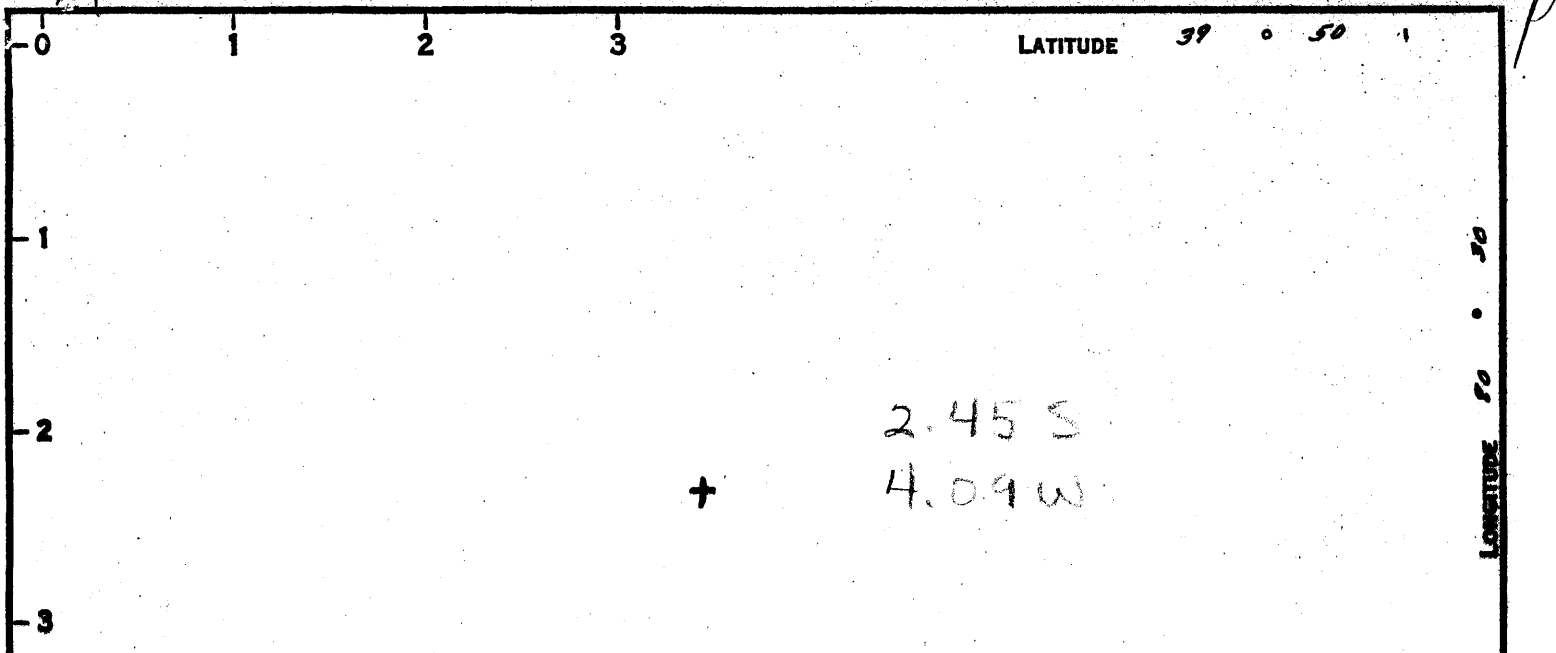
STATE OF WEST VIRGINIA
 DEPARTMENT OF MINES
 OIL AND GAS DIVISION
 CHARLESTON

WELL LOCATION MAP

FILE No. MARS-395-R-P
(Storage)

+ DENOTES LOCATION OF WELL ON UNITED STATES TOPOGRAPHIC MAPS, SCALE 1 TO 62,500. LATITUDE AND LONGITUDE LINES BEING REPRESENTED BY BORDER LINES AS SHOWN.

- DENOTES ONE INCH SPACES ON BORDER LINE OF ORIGINAL TRACING.



COAL OWNED BY _____

NEW LOCATION.....

DRILL DEEPER..... *Re-drill & Recondition*

ABANDONMENT.....

0-25-24

COMPANY THE MANUFACTURERS LIGHT & HEAT

ADDRESS 200 UNION TRUST BLDG. CHAS. W. VA.

FARM C. A. GANER

TRACT _____ ACRES 133 LEASE NO. 2521

WELL (FARM) No. 2 SERIAL No. 2122

ELEVATION (SPIRIT LEVEL) 1081.00'

QUADRANGLE CAMBERN SE

COUNTY MARSHALL DISTRICT LIBERTY

ENGINEER Robert M. Shell (J.R.E.)

ENGINEER'S REGISTRATION No. 361-E

FILE No. _____ DRAWING No. Y-25-24

DATE 15 AUG. 1920 SCALE 1" = 100'

STATE OF WEST VIRGINIA
DEPARTMENT OF MINES
OIL AND GAS DIVISION
CHARLESTON

WELL LOCATION MAP

FILE No. MARS-395-R

(Changes)

+ DENOTES LOCATION OF WELL ON UNITED STATES TOPOGRAPHIC MAPS, SCALE 1 TO 62,500, LATITUDE AND LONGITUDE LINES BEING REPRESENTED BY BORDER LINES AS SHOWN.

- DENOTES ONE INCH SPACES ON BORDER LINE OF ORIGINAL TRACING.



STATE OF WEST VIRGINIA
DEPARTMENT OF MINES
OIL AND GAS DIVISION

Quadrangle CAMRON

Permit No. MARS-395-R

WELL RECORD

Oil or Gas Well GAS
STORAGE
(KIND)

Company The Manufacturers Light and Heat Co.
Address 800 Union Trust Bldg., Pittsburgh 19, Pa.
Farm C. A. Bonar Acres 133
Location (waters) _____
Well No. L-3124 Elev. 1081.03'
District Liberty County Marshall
The surface of tract is owned in fee by _____
Address _____
Mineral rights are owned by _____
Address _____

Drilling commenced August 1, 1960
Drilling completed October 21, 1960
Date Shot 10/25/60 From 1830 To 2073
With _____

Open Flow /10ths Water in _____ Inch
/10ths Merc. in _____ Inch
Volume _____ Cu. Ft.
Rock Pressure 0 lbs. 48 hrs.
Oil _____ bbls., 1st 24 hrs.
Fresh water _____ feet
Salt water _____ feet

Casing and Tubing	Used in Drilling	Left in Well	Packers
Size			
16			Kind of Packer _____
13			
10 3/4"	206'	206'	Size of _____
8 1/2 5/8"	1215'	1215'	
6 5/8 7"	1830'	1830'	Depth set _____
5 3/16			
3			Perf. top _____
2			Perf. bottom _____
Liners Used			Perf. top _____
			Perf. bottom _____

CASING CEMENTED _____ SIZE _____ No. Ft. _____ Date _____

COAL WAS ENCOUNTERED AT 711 FEET _____ INCHES
_____ FEET _____ INCHES _____ FEET _____ INCHES
_____ FEET _____ INCHES _____ FEET _____ INCHES

Formation	Color	THICKNESS ft./in./spft.	Top	Bottom	Oil, Gas or Water	Depth Found	Remarks
✓ Pittsburgh Coal		9	711	720			
✓ Big Dunkard Sand		72	1214	1286	1818		
✓ Lower Maxton Sand		21	1792	1813	1081		
✓ Big Lime			1818				
✓ Big Injun Sand				2112	737		
7" Casing Set at Plugged back to				1830 2073			

