

COAL OWNED BY _____
 RECONDITION _____
 NEW LOCATION
 DRILL DEEPER
 ABANDONMENT *Issued 2-17-71*

COMPANY THE MANUFACTURERS LIGHT & HEAT
 ADDRESS 800 UNION TRUST BLDG. PCH. W. VA.
 FARM G. N. YOH0 (R. NEELY #2)
 TRACT _____ ACRES 127.3 LEASE NO. 26500
 WELL (FARM) NO. 2 SERIAL NO. 4595
 ELEVATION (SPIRIT LEVEL) 1343'
 QUADRANGLE LITTLETON NC
 COUNTY MARSHALL DISTRICT LIBERTY
 ENGINEER Thomas E. Virgin M.
 ENGINEER'S REGISTRATION NO. 150A
 FILE NO. _____ DRAWING NO. Y-25-25A
 DATE 20 DEC. 60 SCALE 1" = 800'

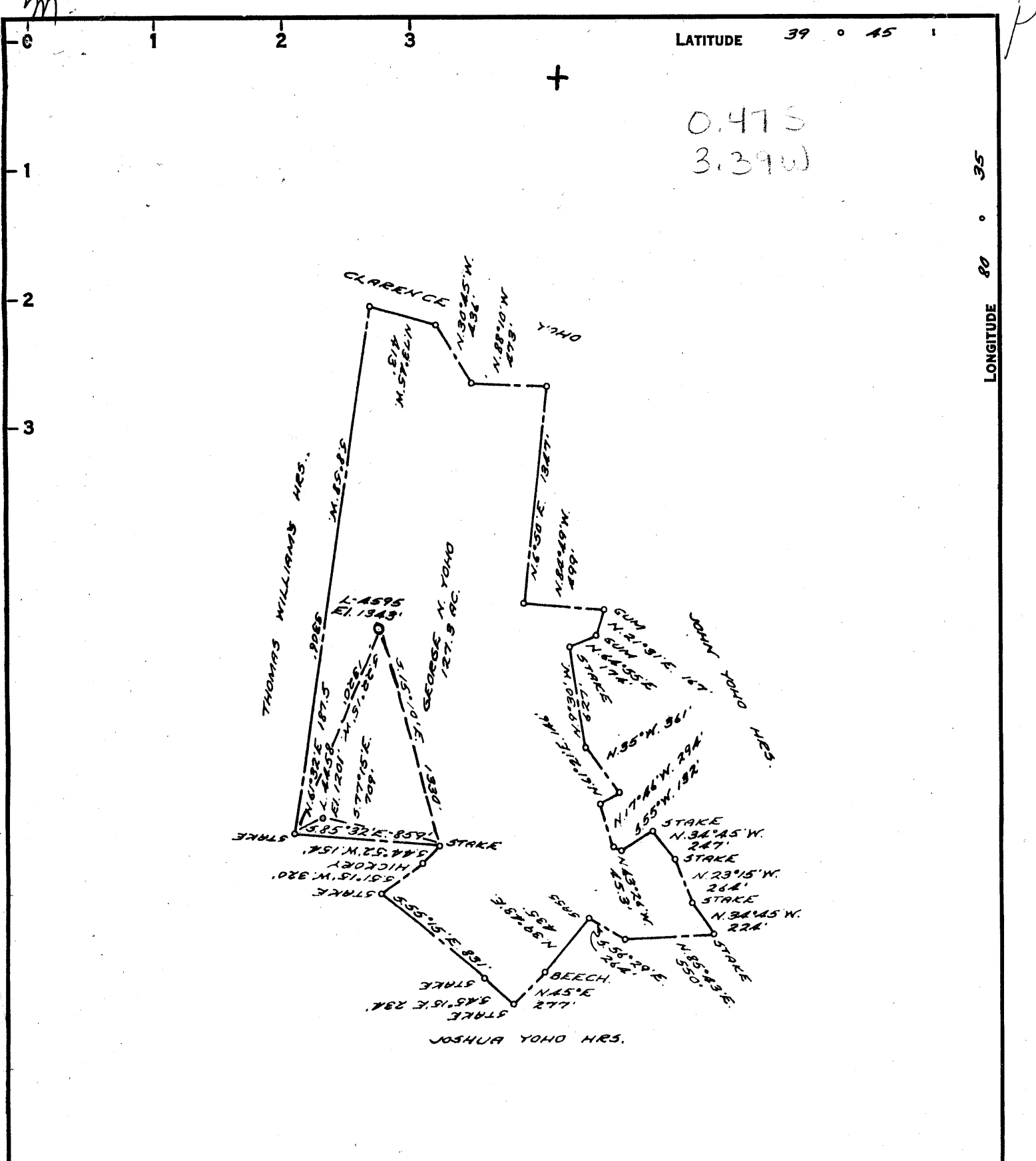
STATE OF WEST VIRGINIA
 DEPARTMENT OF MINES
 OIL AND GAS DIVISION
 CHARLESTON

WELL LOCATION MAP

FILE NO. MARS-400-R-P

+ DENOTES LOCATION OF WELL ON UNITED STATES TOPOGRAPHIC MAPS. SCALE 1 TO 62,500. LATITUDE AND LONGITUDE LINES BEING REPRESENTED BY BORDER LINES AS SHOWN.

- DENOTES ONE INCH SPACES ON BORDER LINE OF ORIGINAL TRACING.



LATITUDE 39 ° 45 ' 1

0.475
3.39W

LONGITUDE 80 ° 35

COAL OWNED BY _____
RECONDITION _____

NEW LOCATION.....

DRILL DEEPER.....

ABANDONMENT.....

P-25-3

COMPANY THE MANUFACTURERS LIGHT & HEAT

ADDRESS 800 UNION TRUST BLDG. POB. RR.

FARM G. N. YOH0 (R. NEELY #2)

TRACT _____ ACRES 127.3 LEASE No. 26500

WELL (FARM) No. 2 SERIAL No. 4595

ELEVATION (SPIRIT LEVEL) 1343'

QUADRANGLE LITTLETON NE

COUNTY MARSHALL DISTRICT LIBERTY

ENGINEER Thomas E. Virgin M.

ENGINEER'S REGISTRATION No. 1504

FILE No. _____ DRAWING No. Y-25-25A

DATE 20 DEC. 60 SCALE 1" = 800'

STATE OF WEST VIRGINIA
DEPARTMENT OF MINES
OIL AND GAS DIVISION
CHARLESTON

WELL LOCATION MAP

FILE No. MARS-400-R

+ DENOTES LOCATION OF WELL ON UNITED STATES TOPOGRAPHIC MAPS, SCALE 1 TO 62,500. LATITUDE AND LONGITUDE LINES BEING REPRESENTED BY BORDER LINES AS SHOWN.

- DENOTES ONE INCH SPACES ON BORDER LINE OF ORIGINAL TRACING.



STATE OF WEST VIRGINIA
DEPARTMENT OF MINES
OIL AND GAS DIVISION

LITTLETON

Quadrangle _____

WELL RECORD

Permit No. MARS-400-R

Oil or Gas Well GAS Storage
(KIND)

Company The Manufacturers Light and Heat Co.
Address 800 Union Trust Building, Pittsburgh 19, Pa.
Farm G. N. Yoho (Roxey Neely) Acres 126
Location (waters) _____
Well No. L-4595 Elev. 1343'
District Liberty County Marshall
The surface of tract is owned in fee by _____
Address _____
Mineral rights are owned by _____
Address _____
Drilling commenced January 10, 1961
Drilling completed March 29, 1961
Date Shot 3/30/61 From Maxton To Sand
With Orifice Well Tester
Open Flow 0 /10ths Water in 1/4 Inch
/10ths Merc. in _____ Inch
Volume None Cu. Ft.
Rock Pressure 0 lbs. 96 hrs.
Oil _____ bbls., 1st 24 hrs.
Fresh water _____ feet
Salt water _____ feet

Casing and Tubing	Used in Drilling	Left in Well	Packers
Size			Kind of Packer
16			
13			
10 3/4"	1206'	1206'	Size of
8 1/4 5/8"	1500'	1500'	
7"	1878'	2218'	Depth set
5 3/16			
4 1/2"	2286'	2286'	Perf. top
2			Perf. bottom
Liners Used			Perf. top
			Perf. bottom

CASING CEMENTED _____ SIZE _____ No. Ft. _____ Date _____
COAL WAS ENCOUNTERED AT 1098 FEET _____ INCHES
FEET _____ INCHES FEET _____ INCHES
FEET _____ INCHES FEET _____ INCHES

Formation	Color	Hard or Soft	Top	Bottom	Oil, Gas or Water	Depth Found	Remarks
		THICKNESS					
✓Pittsburgh		7	1098	1105			
✓Big Dunkard Sand		59	1536	1595	2200		
✓Maxton Sand		24	2110	2134	1343		
✓Big Lime			2200		857		
✓Big Injun Sand				2504			
Old 7" casing		340	1878	2218			
Run 4 1/2" Tubing				2286			
Plug back to			2180				
Perforate 4 1/2" and 7"			2110	2134			
TOTAL DEPTH				2180			
<p>1878' of new 7" casing was run on a steel shoe and set on top of 340' of original 7" casing, left in hde. The 4 1/2" Tubing was set at 2286' and filled back with cement to 2180'. The 4 1/2" tubing and 7" casing was perforated from 2110 to 2134' with 96 shots, 4 shots per foot. Cut window in 7" csg. from 2062-2072 using Servco Section Mill.</p>							

