

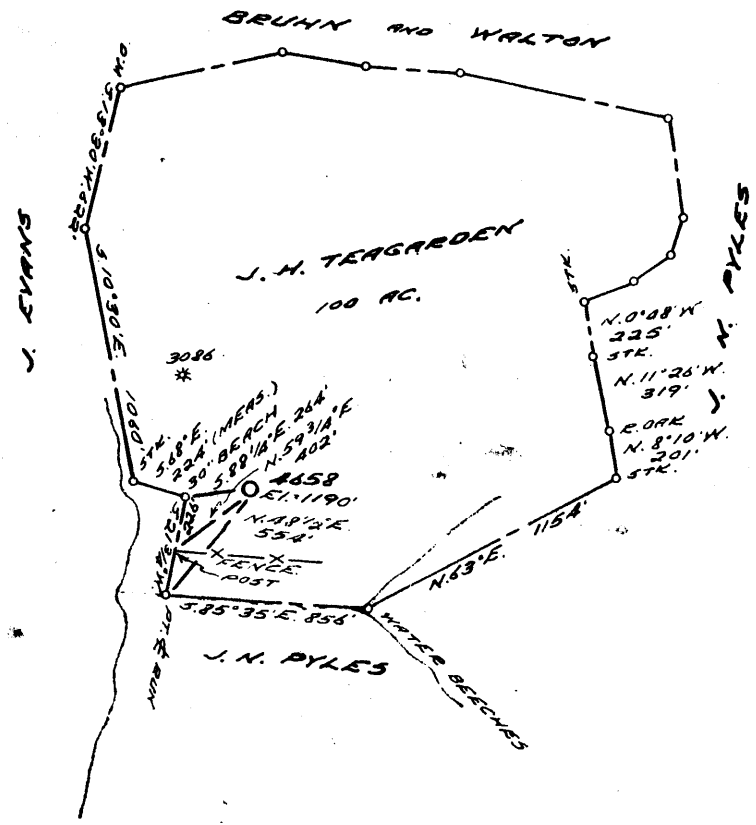
LATITUDE 39 ° 45 ' 1

+

.56s
1.85w

0.46 S ✓
1.84 W

LONGITUDE 80 ° 35 '



COAL OWNED BY _____

NEW LOCATION...

DRILL DEEPER...

ABANDONMENT...

COMPANY THE MANUFACTURERS LIGHT & HEAT

ADDRESS 800 UNION TRUST BLDG. PGH., PA.

FARM J. H. TEAGARDEN

TRACT _____ ACRES 100 LEASE No. 6537

WELL (FARM) No. 3 SERIAL No. 4658

ELEVATION (SPIRIT LEVEL) 1190'

QUADRANGLE LITTLETON - NE

COUNTY MARSHALL DISTRICT LIBERTY

ENGINEER Robert M. Heill (J.E.)

ENGINEER'S REGISTRATION No. 361-E

FILE No. _____ DRAWING No. Y-25-402

DATE 21 JULY 61 SCALE 1" = 800'

STATE OF WEST VIRGINIA
DEPARTMENT OF MINES
OIL AND GAS DIVISION
CHARLESTON

WELL LOCATION MAP

FILE No. MARS-424

+ DENOTES LOCATION OF WELL ON UNITED STATES TOPOGRAPHIC MAPS, SCALE 1 TO 62,500. LATITUDE AND LONGITUDE LINES BEING REPRESENTED BY BORDER LINES AS SHOWN

- DENOTES ONE INCH SPACES ON BORDER LINE OF ORIGINAL TRACING.

State of West Virginia
Division of Environmental Production
Section of Oil and Gas
Well Operator's Report of Well Work

REVISED
horizontal

Farm Name Valerie & Justin Rollins

Operator Well No.: Rollins #1

LOCATION: Elevation: 742

Quadrangle: Mount Alto WV & Ohio

District: Cologne

County: Mason

Latitude: 12,375 Feet South of 38 Deg. 50 Min. 00 Sec.

Longitude: 9,375 Feet West of 81 Deg. 55 Min. 00 Sec.

Company:

Penn Virginia Oil & Gas Corporation

	Casing and Tubing	Used in drilling	Left in well	Cement fill up Cu. Ft.
Address: 2550 East Stone Drive, Suite 110 Kingsport, TN 37660	16"	30'	30'	0
Agent: Jim Burns	13 3/8"	313'	313'	350
Inspector: Larry Parrish	10 3/4"	2259'	2259'	616
Date Permit Issued: 06/09/2004	7 5/8"	3799'	3799'	497
Date Well Work Commenced: 06/15/2004	2 3/8"		6370'	
Date Well Work Completed: 01/07/2005				
Verbal Plugging:				
Date Permission granted on:				
Rotary X Cable Rig				
Total Depth (feet): 6,379				
Fresh Water Depth (ft):				
Salt Water Depth (ft): 1 1/2 stream @ 1140', 2" stream @ 1816'				
Is coal being mined in area (N/Y)? N				
Coal Depths (ft): None Reported				

OPEN FLOW DATA

Producing formation L. Huron Shale - No Production - Temporarily Abandon Well Pay zone depth (ft) _____

Gas: Initial open flow 75 MCF/d Oil: Initial open flow _____ Bbl/d

Final open flow 139 MCF/d Final open flow _____ Bbl/d

Time of open flow between initial and final tests: 72 Hours

Static rock pressure _____ psig (surface pressure) after 288 Hours

Second producing formation _____ Pay zone depth (ft) _____

Gas: Initial open flow _____ MCF/d Oil: Initial open flow _____ Bbl/d

Final open flow _____ MCF/d Final open flow _____ Bbl/d

Time of open flow between initial and final tests: _____ Hours

Static rock pressure _____ psig (surface pressure) after _____ Hours

NOTE: ON BACK OF THIS FORM PUT THE FOLLOWING: 1). DETAILS OF PERFORATED INTERVALS, FRACTURING OR STIMULATING, PHYSICAL CHANGE, ETC. 2). THE WELL LOG WHICH IS A SYSTEMATIC DETAILED GEOLOGICAL RECORD OF ALL FORMATIONS, INCLUDING COAL ENCOUNTERED BY THE WELLBORE.

Signed:

By:

Date:

William M. Ryan
7/20/06

JAN 05 2007

MAS 0424

DETAILS OF PERFORATIONS, FRACTURING, OR PHYSICAL CHANGE, ETC.

Drilled vertical well to 3700', log well, plug back with cement to 2300'. Drill out to 2624' and kick off to drill horizontal from 2624' to 2650'. Build angle from 2624' to 3806'. Drill horizontal 3806' to 6379' measured depth.

Break down lower Huron Shale with N2. Displaced 1,022,491 SCF N2 @ 52,000 SCM @ average of 1450 PSI

<u>FORMATIONS</u>	<u>TOP</u>	<u>BOTTOM</u>	<u>REMARKS</u>
Base Pennsylvanian - Vertical Well	0	1060	TVD
Maxton Ss	1496	1506	TVD
Big Lime	1511	1648	TVD
Big Injun Ss	1648	1816	TVD
Weir Ss	1818	1846	TVD
Coffee Shale	2088	2133	TVD
Berea Ss	2133	2162	TVD
Shale Black & Gray	2162	3436	TVD
Lower Huron Shale	3436	3600	TVD
Shale Black & Gray	3600	TD	TVD
Horizontal Section:			
Shale, Black & Gray	2650	3806	Md Ran 3799' 7 5/8" casing
Lower Huron Shale	3806	6379	Md

JAN 05 2007



STATE OF WEST VIRGINIA
DEPARTMENT OF MINES
OIL AND GAS DIVISION

Quadrangle Littleton
Permit No. MARS-424

WELL RECORD

Storage GAS
Oil or Gas Well
(KIND)

Company The Manufacturers Lt. and Ht. Co.
Address 800 Union Trust Bldg., Pittsburgh 19, Pa.
Farm J. H. Teagarden Acres 100
Location (waters) _____
Well No. L-4658 Elev. 1190'
District Liberty County Marshall
The surface of tract is owned in fee by _____
Address _____
Mineral rights are owned by _____
Address _____
Drilling commenced September 25, 1961
Drilling completed December 4, 1961
Date Shot 12/4/61 From Maxton and Big Injun
To _____
With Pitot Tube
Open Flow 18 /10ths Water in _____ Inch
4 1/2 /10ths Merc. in _____ Inch
Volume 2,590,000 Cu. Ft.
Rock Pressure 770 lbs. 24 hrs.
Oil _____ bbls., 1st 24 hrs.
Fresh water _____ feet _____ feet
Salt water _____ feet _____ feet

Casing and Tubing	Used in Drilling	Left in Well	Packers
Size			Kind of Packer
16			
13 3/8"	97'	97'	
10			Size of
8 5/8"	944'	944'	
5 1/2"	1976'	1976'	Depth set
5 3/16			
3			Perf. top
2			Perf. bottom
Liners Used			Perf. top
			Perf. bottom

CASING CEMENTED _____ SIZE _____ No. Ft. _____ Date _____
COAL WAS ENCOUNTERED AT 870 FEET _____ INCHES
_____ FEET _____ INCHES FEET _____ INCHES
_____ FEET _____ INCHES FEET _____ INCHES

Formation	Color	Hard or Soft	Top	Bottom	Oil, Gas or Water	Depth Found	Remarks
✓ Pittsburgh Coal		THICKNESS	870	870			
✓ Big Dunkard			1287	1313			
✓ 2nd Salt Sand			1766	1792			
✓ Maxton Sand			1872	1908			
✓ Big Lime			1954				
✓ Big Injun				2162	Not drilled through.		
Maxton Sand Perforated by Schlumberger Well Survey Corp. from 1872 to 1908 with Capsul Jets and Bullets. Max. depth logged by Schlumberger was 2043'.				Note: Drilled 17-1/2" Hole to 107', Run 98' of 13-3/8" Casing Sm. Gr. H-48#, bev. on bottom, and cemented W/125 Bg. Cement, 1 Bg. Jel Flakes & 17 Bg. Cal. Chloride, 14.5# per gal., good return of cement at surface. Drilled 12-1/4" Hole to 967', Run 947' of 8-5/8" Casing Sm. Gr. J-24# on a Float Shoe and cemented W/550 Bg. Cem. 19 Bg. Aquagel & 3 Bg. Hydrotan, 14.3# per gal., good return of cement at surface. Drilled 7-7/8" Hole to 1981', Run 1986' of 5-1/2" Casing Sm. Gr. J-17# on A Float Shoe and cemented W/600 Bg. Cement & 1 Bg. Hydrotan, 14.3# per gal., good return of cement at surf.; drilled 4-3/4" Hole to total depth of 2162'.			