

2.90S
0.20W

COAL OWNED BY RECONDITION
 NEW LOCATION.....
 DRILL DEEPER.....
 ABANDONMENT..... **Issued**
 7-13-70

0-25-24-29

COMPANY THE MANUFACTURERS LIGHT & HEAT
 ADDRESS 800 UNION TRUST BLDG. PSH. PA.
 FARM Y.T. (JOHN) DAVIS
 TRACT _____ ACRES 143 LEASE No. 31092
 WELL (FARM) No. A SERIAL No. 4688
 ELEVATION (SPIRIT LEVEL) 1559.6'
 QUADRANGLE CAMERON SU
 COUNTY MARSHALL DISTRICT LIBERTY
 ENGINEER Robert M. Spill (JF)
 ENGINEER'S REGISTRATION No. 361E
 FILE No. _____ DRAWING No. Y-25-432
 DATE 12 SEPT. 61 SCALE 1" = 800'

STATE OF WEST VIRGINIA
 DEPARTMENT OF MINES
 OIL AND GAS DIVISION
 CHARLESTON

WELL LOCATION MAP

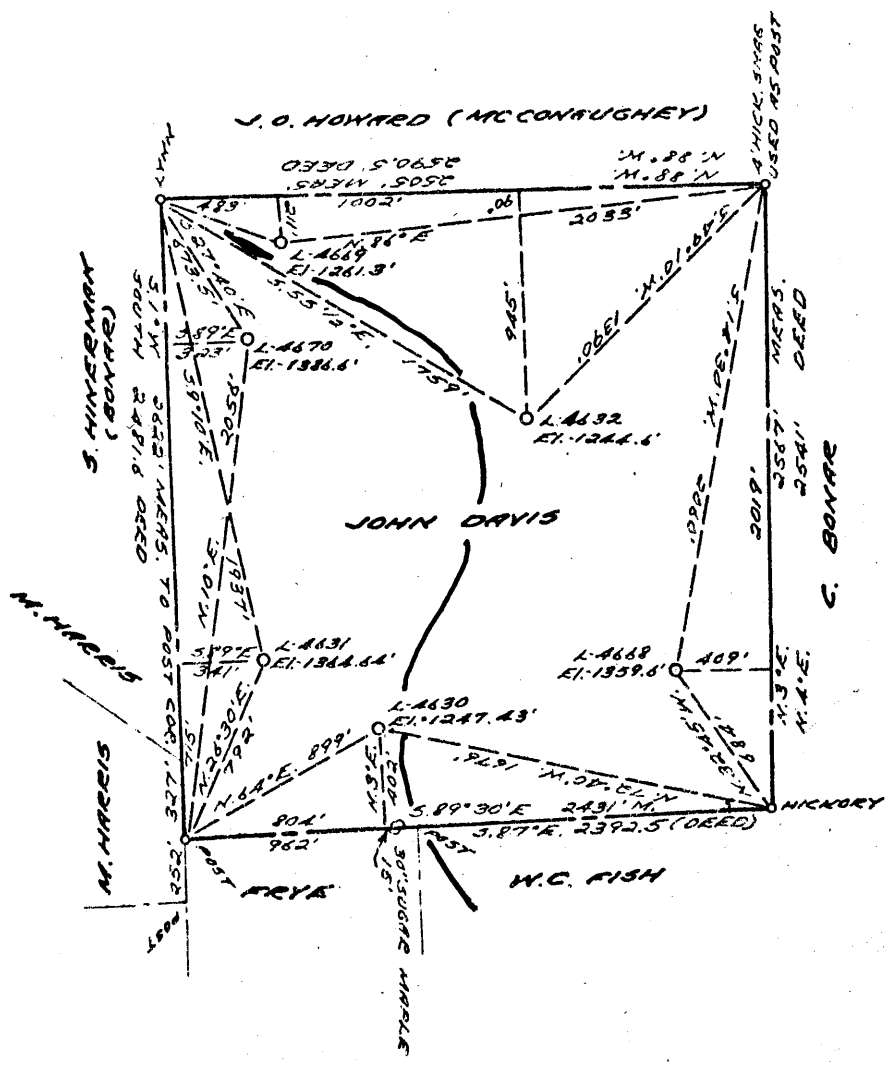
FILE No. MARS-430-REPRILL-P
was 152A

+ DENOTES LOCATION OF WELL ON UNITED STATES TOPOGRAPHIC MAPS. SCALE 1 TO 62,500. LATITUDE AND LONGITUDE LINES BEING REPRESENTED BY BORDER LINES AS SHOWN.
 - DENOTES ONE INCH SPACES ON BORDER LINE OF ORIGINAL TRACING.

LATITUDE 39 ° 50 ' 1

LONGITUDE 80 ° 35 ' 1

2.96 S
0.19 W



COAL OWNED BY RECONDITION

NEW LOCATION.....

DRILL DEEPER.....

ABANDONMENT.....

0-25-24-29

COMPANY THE MANUFACTURERS LIGHT & HEAT

ADDRESS 800 UNION TRUST BLDG. P64. PA.

FARM JOHN DAVIS

TRACT 149 ACRES 150 LEASE No. 31092

WELL (FARM) No. A SERIAL No. 4668

ELEVATION (SPIRIT LEVEL) 1359.6'

QUADRANGLE CAMERON 5

COUNTY MARSHALL DISTRICT LIBERTY

ENGINEER Robert M. Spill (JF)

ENGINEER'S REGISTRATION No. 361 E

FILE No. _____ DRAWING No. Y-25-432

DATE 12 SEPT. 61 SCALE 1" = 800'

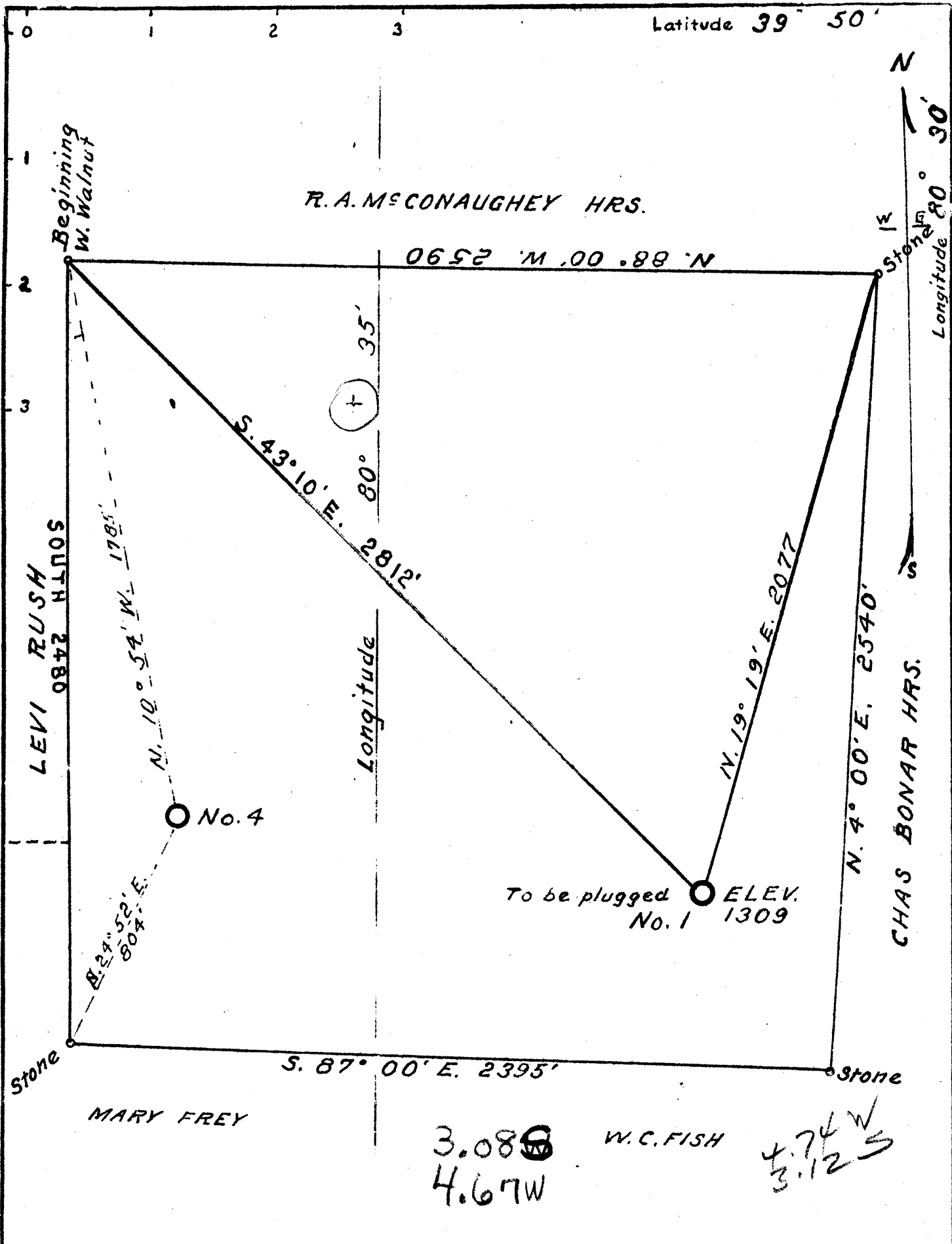
STATE OF WEST VIRGINIA
DEPARTMENT OF MINES
OIL AND GAS DIVISION
CHARLESTON

WELL LOCATION MAP

FILE No. MARS-430-REDRILL

+ DENOTES LOCATION OF WELL ON UNITED STATES TOPOGRAPHIC MAPS. SCALE 1 TO 62,500. LATITUDE AND LONGITUDE LINES BEING REPRESENTED BY BORDER LINES AS SHOWN.

- DENOTES ONE INCH SPACES ON BORDER LINE OF ORIGINAL TRACING.



Company CAMERON LIGHT & HEAT CO.

Address CAMERON, W. VA.

Farm M. E. DAVIS

Tract 1 Acres 143.6 Lease No. _____

Well (Farm) No. ONE Serial No. _____

Quadrangle CAMERON - Elevation 1309

County MARSHALL

District LIBERTY

Engineer GORDON W. SAMMONS

Engineer's Registration No. 509

File No. _____ Drawing No. _____

Date 3-31-1941 Scale 1" = 400'

STATE OF WEST VIRGINIA
DEPARTMENT OF MINES
OIL AND GAS DIVISION
CHARLESTON

WELL LOCATION MAP
FILE NO. MARS-152A

+ Denotes location of well on United States Topographic Maps, scale 1 to 62,500, latitude and longitude lines being represented by border lines as shown.

- Denotes one inch spaces on border line of original tracing.

• 39°47'30"

Latitude

.175
.11w

80°35'00"

Longitude

Topo Location

7.5' Loc. _____ 15' Loc. _____
_____ (calc.) _____

Company Cameron Lt+Lt.

Farm ME Davis #1

15' Quad _____
(sec.)

7.5' Quad Cameron

District Liberty

WELL LOCATION PLAT

County OSI Permit 30152



STATE OF WEST VIRGINIA
DEPARTMENT OF MINES
OIL AND GAS DIVISION

Quadrangle Cameron

Permit No. MARS-430-R

WELL RECORD

Oil or Gas Well GAS
(KIND)

Storage

Company The Manufacturers Lt. and Ht. Co.
Address 800 Union Trust Bldg., Pittsburgh 19, Pa.
Farm John Davis Acres 143
Location (waters) _____
Well No. L-4668 Elev. 1359.6'
District Liberty County Marshall
The surface of tract is owned in fee by _____
Address _____
Mineral rights are owned by _____
Address _____
Drilling commenced October 23, 1961
Drilling completed January 4, 1962
Date Shot 1/4/62 From Big Injun
With No Gas to Test
Open Flow /10ths Water in _____ Inch
/10ths Merc. in _____ Inch
Volume _____ Cu. Ft.
Rock Pressure 5 lbs. 72 hrs.
Oil _____ bbls., 1st 24 hrs.
Fresh water _____ feet
Salt water _____ feet

Casing and Tubing	Used in Drilling	Left in Well	Packers
Size			Kind of Packer
16			
13 3/8"	92	92	
10			Size of
8 5/8"	1122	1300	
7"	1688	2098	Depth set
5 3/16			
4 1/2"	2132	2132	Perf. top
2			Perf. bottom
Liners Used			Perf. top
			Perf. bottom

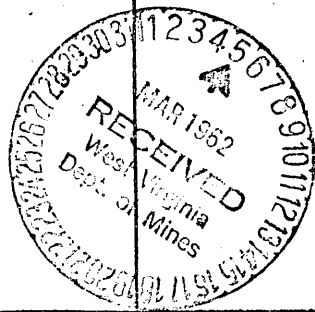
CASING CEMENTED _____ SIZE _____ No. Ft. _____ Date _____

COAL WAS ENCOUNTERED AT 994 FEET INCHES

FEET INCHES FEET INCHES

FEET INCHES FEET INCHES

Formation	Color	THICKNESS THICKNESS	Top	Bottom	Oil, Gas or Water	Depth Found	Remarks
✓ Pittsburgh Coal		6	994	1000			
✓ Big Dunkard		60	1490	1550			
✓ Second Salt Sand		22	1913	1935			
✓ Maxton Sand		9	2047	2056			
✓ Big lime			2106				
✓ Big Injun Sand				2412			
Old 7" Casing		590	1688	2098			
Plug back to				2440			
Run 4-1/2" Tubing				2135			
Cut Window in 7" Csg.			1996	2006			



DAVIS NO. 1 WELL.

Liberty
.....District, Marshall County, W. Va.
By Cameron Heat & Light Co.
MNV-12.

Drilled by Braden and Fletcher, Con.
Commenced Nov. 23, 1915; completed, Feb. 15, 1916.
Casing in well: 10" (pulled out); 8 $\frac{1}{2}$ ", 1300'; 6 $\frac{5}{8}$ ", 2000'.
Tubing in well, 3", 3033'.
Well cleaned out in April 27, 1916; finished May 20, 1916.
Top packer set in Big Injun at 2485 feet.
Lower packer set at 2931 feet, or 102 feet off bottom.
Elevation..... Well shot at 3004 feet. *NET.*
Record from Mr. Straub 9-11-39.

MARS-152-A

	Top.	Bottom.
Pittsburgh Coal	995	- ...
Big Lime	2170	-
Big Injun Sand	2210	- 2485
Thirty-foot shells	2805	- 2915
Sand and lime	2950	- 2980
Gordon Stray Sand (cable measurement)	2995	- 3020
Gordon Sand (cable measurement)	3022	
Total depth		3033

Gas at 3005 feet, steel line, or
3015 feet, cable measurement.

Sand and lime close and hard
between 2950 and 2980'.