

COAL OWNED BY \_\_\_\_\_  
 REDRILL FOR STORAGE

NEW LOCATION.....   
 DRILL DEEPER.....   
 ABANDONMENT.....  *issued 7-15-70*

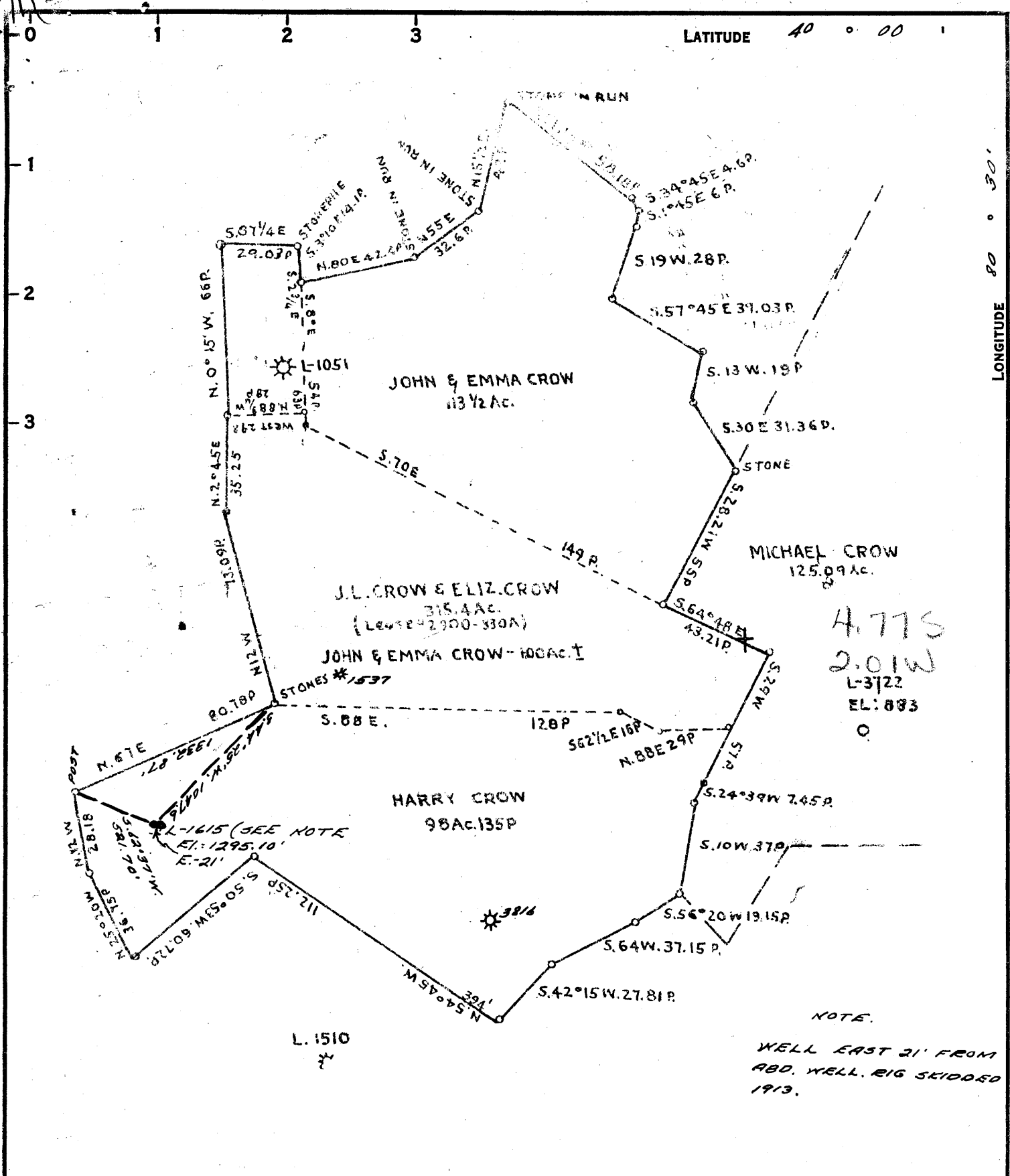
0-25-10

COMPANY THE MANUFACTURERS LIGHT & HEAT  
 ADDRESS 800 UNION TRUST BLDG. PGH. PA.  
 FARM JOHN & EMMA CROW  
 TRACT \_\_\_\_\_ ACRES 930 LEASE No. 3900  
 WELL (FARM) No. 3 SERIAL No. 1615  
 ELEVATION (SPIRIT LEVEL) 1295.10  
 QUADRANGLE CAMERON NE  
 COUNTY MARSHALL DISTRICT WEBSTER  
 ENGINEER Robert M. Heill  
 ENGINEER'S REGISTRATION No. 381-E (O.G.)  
 FILE No. \_\_\_\_\_ DRAWING No. Y-25-319  
 DATE 31 FEB. 62 REVISIOED 31 OCT. 62  
 SCALE 1" = 800'

STATE OF WEST VIRGINIA  
 DEPARTMENT OF MINES  
 OIL AND GAS DIVISION  
 CHARLESTON

WELL LOCATION MAP  
 FILE No. MARS-432-REDRILL-P  
REVISED - 11-13-62

+ DENOTES LOCATION OF WELL ON UNITED STATES TOPOGRAPHIC MAPS. SCALE 1 TO 62,500. LATITUDE AND LONGITUDE LINES BEING REPRESENTED BY BORDER LINES AS SHOWN.  
 - DENOTES ONE INCH SPACES ON BORDER LINE OF ORIGINAL TRACING.



COAL OWNED BY \_\_\_\_\_  
 REDRILL FOR STORAGE \_\_\_\_\_

NEW LOCATION.....

DRILL DEEPER.....

ABANDONMENT.....

COMPANY THE MANUFACTURERS LIGHT & HEAT

ADDRESS 800 UNION TRUST BLDG. PGH. PA.

FARM JOHN & EMMA CROW

TRACT \_\_\_\_\_ ACRES 330 LEASE NO. 2900

WELL (FARM) No. 3 SERIAL No. 1615

ELEVATION (SPIRIT LEVEL) 1295.10

QUADRANGLE CAMERON NE

COUNTY MARSHALL DISTRICT WEBSTER

ENGINEER Robert M. Heill

ENGINEER'S REGISTRATION No. 381-E (O.G.)

FILE No. \_\_\_\_\_ DRAWING No. Y-25-319

DATE 21 FEB. 62 SCALE 1" = 800'

STATE OF WEST VIRGINIA  
 DEPARTMENT OF MINES  
 OIL AND GAS DIVISION  
 CHARLESTON

**WELL LOCATION MAP**

FILE No. MARS-432-REDRILL  
REVISED - 11-13-62

+ DENOTES LOCATION OF WELL ON UNITED STATES TOPO-  
 GRAPHIC MAPS, SCALE 1 TO 62,500, LATITUDE AND LONGITUDE  
 LINES BEING REPRESENTED BY BORDER LINES AS SHOWN

- DENOTES ONE INCH SPACES ON BORDER LINE OF ORIGINAL  
 TRACING.



STATE OF WEST VIRGINIA  
DEPARTMENT OF MINES  
OIL AND GAS DIVISION

WELL RECORD

Quadrangle Cameron

Permit No. MARS-432-Red.

Oil or Gas Well GA  
(X D)

Company The Mfrs. Lt. and Ht. Co.  
Address 800 Union Trust Bldg., Pittsburgh 19, Pa.  
Farm John and Emma Crow Acres 330  
Location (waters) \_\_\_\_\_  
Well No. L-1615 (2nd Well) Elev. 1298.55' D.M.  
District Webster County Marshall  
The surface of tract is owned in fee by \_\_\_\_\_  
Address \_\_\_\_\_  
Miners' rights are owned by \_\_\_\_\_  
Address \_\_\_\_\_  
Drilling commenced July 26, 1962  
Drilling completed April 26, 1963  
Date Shot 4/23/63 From Big Injun  
With Orifice Well Tester  
Open Flow 8 /10ths Water in 1/4 Inch  
1 /10ths Merc. in \_\_\_\_\_ Inch  
Volume 1,600 Cu. Ft.  
Rock Pressure 220 lbs. 72 hrs.  
Oil \_\_\_\_\_ bbls., 1st 24 hrs.  
Fresh water \_\_\_\_\_ feet  
Salt water \_\_\_\_\_ feet

Casing and Tubing	Used in Drilling	Left in Well	Packer
Size			
13 3/8"	96'2"	96'2"	Kind of Packer _____
10			Size of _____
8 5/8"	209'3"	1269'	Depth set _____
7"	1737'	1737'	Perf. top _____
5 3/16			Perf. bottom _____
4 1/2"	1889'10"	1889'10"	Perf. top _____
2			Perf. bottom _____
Liners Used			Perf. top _____
			Perf. bottom _____

CASING CEMENTED \_\_\_\_\_ SIZE \_\_\_\_\_ No. Ft. \_\_\_\_\_ Date \_\_\_\_\_  
COAL WAS ENCOUNTERED AT 748 FEET \_\_\_\_\_ INCHES  
\_\_\_\_\_ FEET \_\_\_\_\_ INCHES FEET \_\_\_\_\_ INCHES  
\_\_\_\_\_ FEET \_\_\_\_\_ INCHES FEET \_\_\_\_\_ INCHES

Formation	Color	THICKNESS	Top	Bottom	Oil, Gas or Water	Depth Found	Remarks
Pittsburgh Coal		7	748	755			
Gas Sand		45	1392	1437			
1st Salt Sand		41	1496	1537	Gas - 1503'		-Orig. Record (Cased off)
2nd Salt Sand		34	1566	1600	Gas - 1711'		-Orig. Record (Cased off)
3rd Salt Sand		152	1654	1806			
Big Lime		12	1840	1852			
Big Injun			1852				
Redrilled to original depth of 1713' and drilled deeper to 1981'					Pay Zones		
TOTAL DEPTH				1981	1922-1930 G.R. & G.R.N.		
					1932 - 1936 G.R. & G.R.N.		
					1960 - 1966 G.R. & G.R.N.		
					Drilled from 1900' to Total Depth with hole full of fluid		
					4/18/63		
					Perforated from 1920 - 1930' and from 1959 - 1969 with 4 - 2 1/8" capsule jets per foot.		

