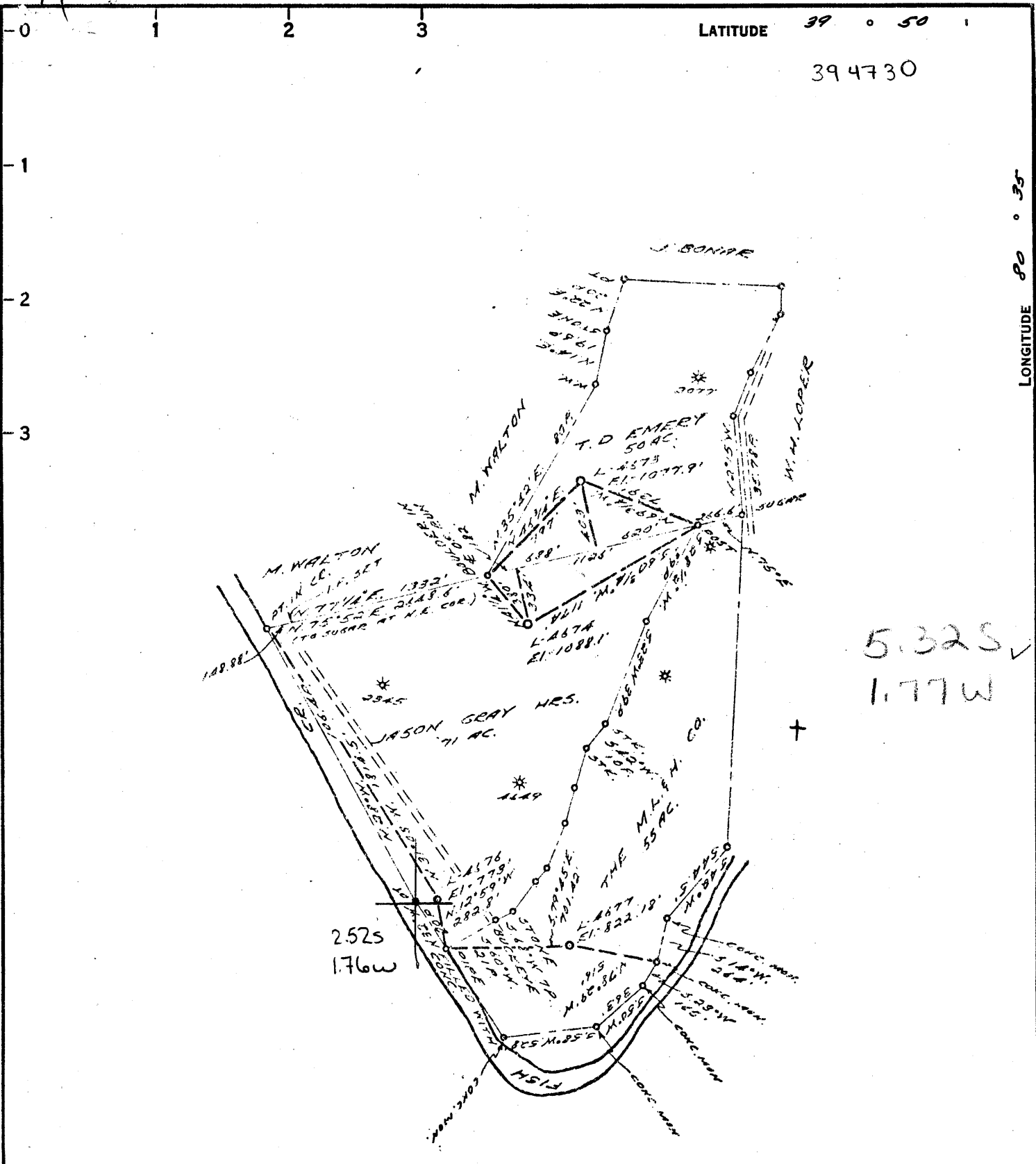


AM



LATITUDE 39 ° 50 ' 1  
39 47 30

LONGITUDE 80 ° 35'

COAL OWNED BY \_\_\_\_\_

NEW LOCATION  FOR STORAGE  
 DRILL DEEPER   
 ABANDONMENT

0-25-28

COMPANY THE MANUFACTURERS LIGHT & HEAT  
 ADDRESS 300 UNION TRUST BLDG., PGH. PA.  
 FARM JASON GRAY  
 TRACT \_\_\_\_\_ ACRES 71 LEASE NO. 2262  
 WELL (FARM) NO. A SERIAL NO. 4676  
 ELEVATION (SPIRIT LEVEL) 773'  
 QUADRANGLE CAMERON SC  
 COUNTY MARSHALL DISTRICT LIBERTY  
 ENGINEER Robert M. Hill  
 ENGINEER'S REGISTRATION NO. 381-E. (U.F.)  
 FILE NO. \_\_\_\_\_ DRAWING NO. Y-25-508  
 DATE 22 MAR. 62 SCALE 1"=800'

STATE OF WEST VIRGINIA  
 DEPARTMENT OF MINES  
 OIL AND GAS DIVISION  
 CHARLESTON

**WELL LOCATION MAP**

FILE NO. MARS-437

+ DENOTES LOCATION OF WELL ON UNITED STATES TOPOGRAPHIC MAPS. SCALE 1 TO 62,500. LATITUDE AND LONGITUDE LINES BEING REPRESENTED BY BORDER LINES AS SHOWN.  
 - DENOTES ONE INCH SPACES ON BORDER LINE OF ORIGINAL TRACING.

9-0 25



STATE OF WEST VIRGINIA  
DEPARTMENT OF MINES  
OIL AND GAS DIVISION

Quadrangle Cameron

Permit No. MARS-437

## WELL RECORD

STORAGE GAS  
Oil or Gas Well \_\_\_\_\_  
(KIND)

Company The Mfrs. Lt. and Ht. Co.  
 Address 800 Union Trust Bldg., Pittsburgh 19, Pa.  
 Farm Jason Gray Acres 71  
 Location (waters) \_\_\_\_\_  
 Well No. L-4676 Elev. 779'  
 District Liberty County Marshall  
 The surface of tract is owned in fee by \_\_\_\_\_  
 Address \_\_\_\_\_  
 Mineral rights are owned by \_\_\_\_\_  
 Address \_\_\_\_\_  
 Drilling commenced May 28, 1962  
 Drilling completed July 13, 1962  
 Date Shot 7/13/62 From BIG INJUN To \_\_\_\_\_  
 With \_\_\_\_\_  
 Open Flow 4.5 /10ths Water in \_\_\_\_\_ Inch  
3.958 /10ths Merc. in \_\_\_\_\_ Inch  
 Volume 4,090,000 Cu. Ft.  
 Rock Pressure 640 lbs. 5 days \_\_\_\_\_ hrs.  
 Oil \_\_\_\_\_ bbls., 1st 24 hrs.  
 Fresh water \_\_\_\_\_ feet \_\_\_\_\_ feet  
 Salt water \_\_\_\_\_ feet \_\_\_\_\_ feet

Casing and Tubing	Used in Drilling	Left in Well	Packers
Size			
16			Kind of Packer
18 3/8"	96'	96'	
10			Size of
8 1/2 5/8"	518'	518'	
6 3/4 5 1/2"	1561'	1561'	Depth set
8			Perf. top
2			Perf. bottom
Liners Used			Perf. top
			Perf. bottom

CASING CEMENTED \_\_\_\_\_ SIZE \_\_\_\_\_ No. Ft. \_\_\_\_\_ Date \_\_\_\_\_

COAL WAS ENCOUNTERED AT 442 FEET \_\_\_\_\_ INCHES  
 \_\_\_\_\_ FEET \_\_\_\_\_ INCHES FEET \_\_\_\_\_ INCHES  
 \_\_\_\_\_ FEET \_\_\_\_\_ INCHES FEET \_\_\_\_\_ INCHES

Formation	Color	THICKNESS Feet	Top	Bottom	Oil, Gas or Water	Depth Found	Remarks
Pittsburgh Coal		7	442	449			
Murphy Sand		19	554	573			
Big Dunkard		33	977	1010			
1st Salt Sand		18	1142	1160			
2nd Salt Sand		34	1236	1270			
3rd Salt Sand		14	1334	1348			
Maxton Sand		46	1442	1488	No Gas		
Lower Maxton Sand		11	1514	1525			
Big Lime		39	1528	1567			
Big Injun Sand			1571	1758	Gas @ 1608'		
Total Depth				1758			
5 1/2" Casing set @				1563'			

