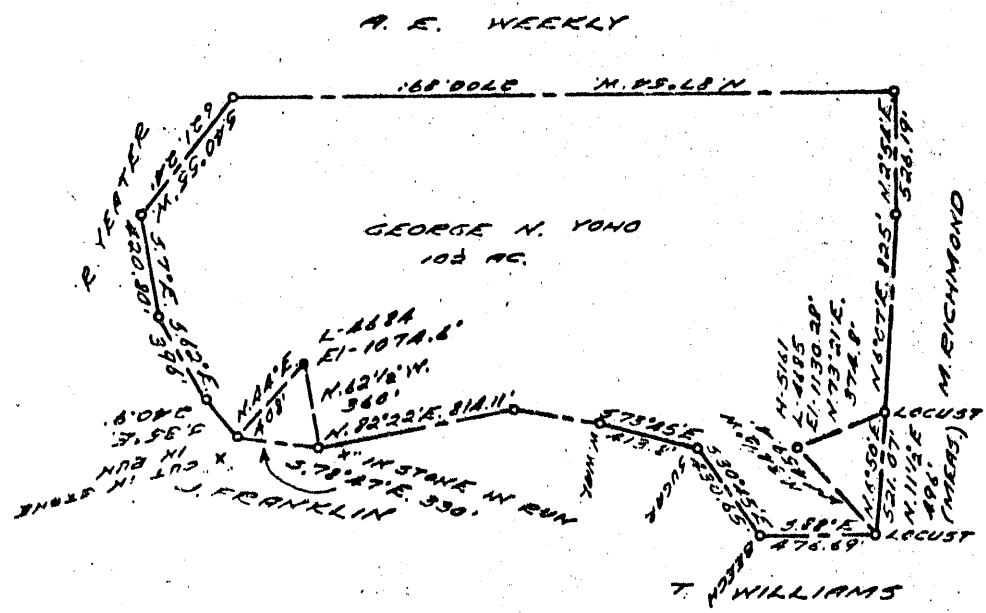


LONGITUDE 80° 37' 30"



COAL OWNED BY REDRILL FOR STORAGE  
 NEW LOCATION   
 DRILL DEEPER  FSS4cd  
 ABANDONMENT  7-13-70

P-25-9

COMPANY THE MANUFACTURERS LIGHT & HEAT  
 ADDRESS 800 UNION TRUST BLDG, PCH, PA.  
 FARM GEORGE N. YONG  
 TRACT \_\_\_\_\_ ACRES 102 LEASE NO. 26386  
 WELL (FARM) NO. 2 SERIAL NO. 4684  
 ELEVATION (SPIRIT LEVEL) 1074.6'  
 QUADRANGLE LITTLETON NC  
 COUNTY MARSHALL DISTRICT LIBERTY  
 ENGINEER Robert M. Heill  
 ENGINEER'S REGISTRATION NO. 361-E. (J.F.)  
 FILE NO. \_\_\_\_\_ DRAWING NO. Y-25-559  
 DATE 11 JUNE 67. SCALE 1" = 800'

**STATE OF WEST VIRGINIA**  
 DEPARTMENT OF MINES  
 OIL AND GAS DIVISION  
 CHARLESTON

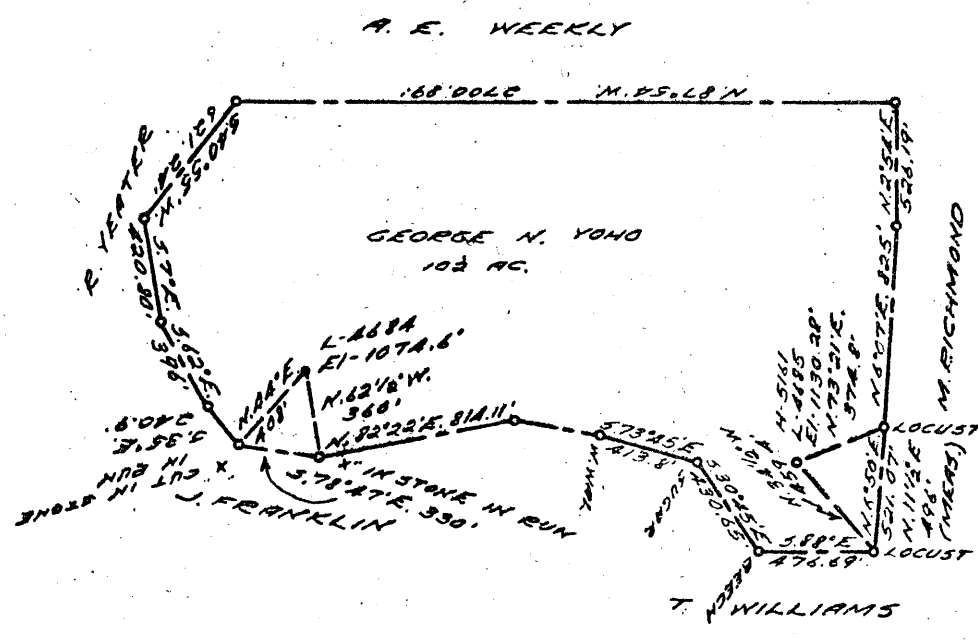
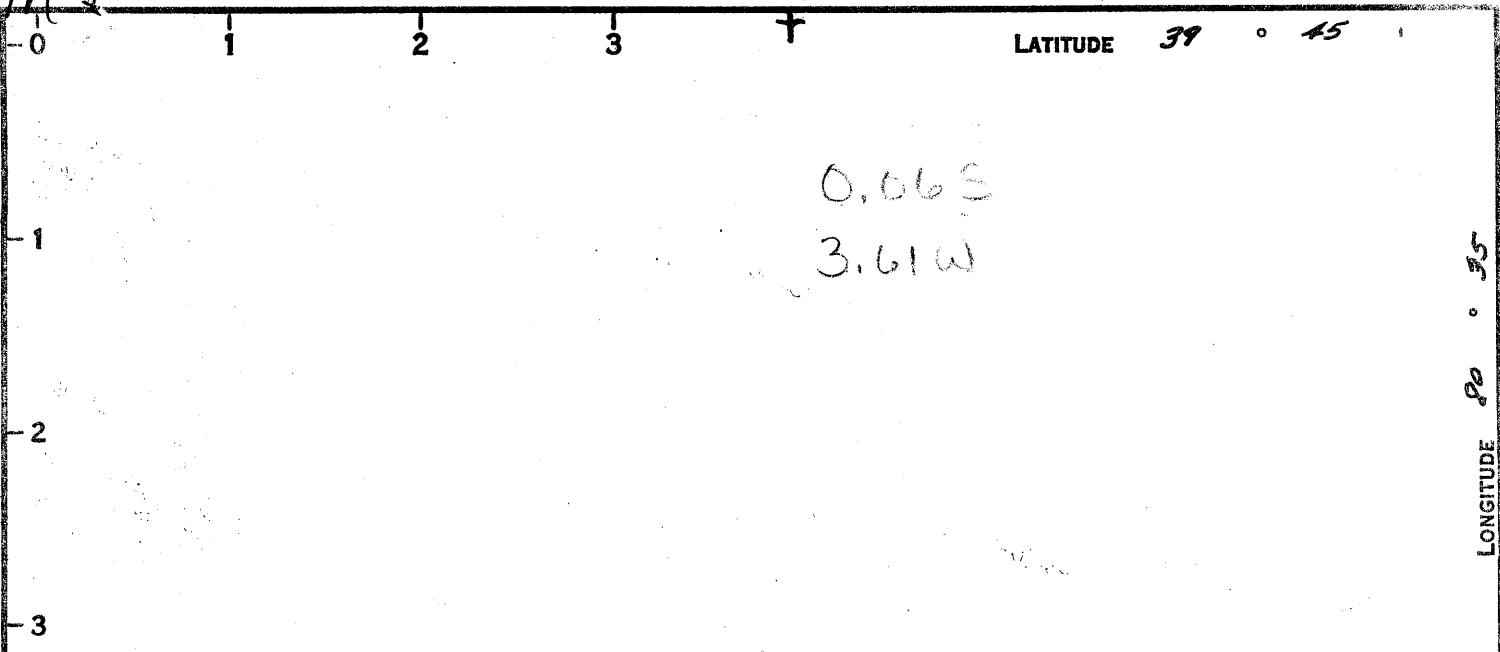
**WELL LOCATION MAP**

FILE NO. MARS-460-R-P

+ DENOTES LOCATION OF WELL ON UNITED STATES TOPOGRAPHIC MAPS, SCALE 1 TO 62,500. LATITUDE AND LONGITUDE LINES BEING REPRESENTED BY BORDER LINES AS SHOWN.

— DENOTES ONE INCH SPACES ON BORDER LINE OF ORIGINAL TRACING.

MJC



LONGITUDE 80 ° 35

TCP

COAL OWNED BY REDRILL FOR STORAGE

NEW LOCATION

DRILL DEEPER

ABANDONMENT

P-25-3

COMPANY THE MANUFACTURERS LIGHT & HEAT

ADDRESS 800 UNION TRUST BLDG, PENN. PA.

FARM GEORGE N. YONG

TRACT \_\_\_\_\_ ACRES 102 LEASE No. 26386

WELL (FARM) No. 2 SERIAL No. 4684

ELEVATION (SPIRIT LEVEL) 1074.6'

QUADRANGLE LITTLETON NC

COUNTY MARSHALL DISTRICT LIBERTY

ENGINEER Robert M. Heill

ENGINEER'S REGISTRATION No. 361-E. (J.F.)

FILE No. \_\_\_\_\_ DRAWING No. Y-25-559

DATE 11 JUNE 62. SCALE 1" = 800'

STATE OF WEST VIRGINIA  
DEPARTMENT OF MINES  
OIL AND GAS DIVISION  
CHARLESTON

### WELL LOCATION MAP

FILE No. MARS-460-R

+ DENOTES LOCATION OF WELL ON UNITED STATES TOPOGRAPHIC MAPS. SCALE 1 TO 62,500. LATITUDE AND LONGITUDE LINES BEING REPRESENTED BY BORDER LINES AS SHOWN.

- DENOTES ONE INCH SPACES ON BORDER LINE OF ORIGINAL TRACING.



STATE OF WEST VIRGINIA  
DEPARTMENT OF MINES  
OIL AND GAS DIVISION

Quadrangle Littleton

Permit No. MARS-460-R

WELL RECORD

STORAGE

Oil or Gas Well GAS

(KIND)

Company The Mfrs. Lt. and Ht. Co.  
 Address 800 Union Trust Bldg., Pittsburgh 19, Pa.  
 Farm G. N. Yoho Acres 102  
 Location (waters) \_\_\_\_\_  
 Well No. 4684 Elev. 1074.6'  
 District Liberty County Marshall  
 The surface of tract is owned in fee by \_\_\_\_\_  
 Address \_\_\_\_\_  
 Mineral rights are owned by \_\_\_\_\_  
 Address \_\_\_\_\_  
 Drilling commenced August 4, 1962  
 Drilling completed December 18, 1962  
 Date Shot 12/18/62 From 1842 To 1858  
 With Orifice Gas Well Tester  
 Open Flow 0 /10ths Water in 1/4 Inch  
 /10ths Merc. in \_\_\_\_\_ Inch  
 Volume None Cu. Ft.  
 Rock Pressure 72 lbs. 72 hrs.  
 Oil \_\_\_\_\_ bbls., 1st 24 hrs.  
 Fresh water \_\_\_\_\_ feet \_\_\_\_\_ feet  
 Salt water \_\_\_\_\_ feet \_\_\_\_\_ feet

Casing and Tubing	Used in Drilling	Left in Well	Packers
Size			Kind of Packer
16			
18 3/8"	94'	94'	
10 3/4"	1046'	1046'	Size of
8 5/8"	1398'	1398'	Depth set
8 7"	1744'	1744'	
5 3/16			Perf. top
8 4 1/2"	2290'	2290'	Perf. bottom
2			Perf. top
Liners Used			Perf. bottom

CASING CEMENTED \_\_\_\_\_ SIZE \_\_\_\_\_ No. Ft. \_\_\_\_\_ Date \_\_\_\_\_  
 COAL WAS ENCOUNTERED AT 858 FEET \_\_\_\_\_ INCHES  
 \_\_\_\_\_ FEET \_\_\_\_\_ INCHES FEET \_\_\_\_\_ INCHES  
 \_\_\_\_\_ FEET \_\_\_\_\_ INCHES FEET \_\_\_\_\_ INCHES

Formation	Color	Hardness XX Soft X	Top	Bottom	Oil, Gas or Water	Depth Found	Remarks
		THICKNESS					
✓ Pittsburgh Coal			858	866			
✓ Murphy Sand			966	994			
Big Dunkard Sand			1347	1424			
✓ First Salt Sand			1538	1570	1940		
✓ Third Salt Sand			1740	1790	1075		
Maxton Sand			1842	1858	865		
Big Lime			1940	1990			
Big Injun Sand			1994	2250			
4-1/2" Tubing Set @				2290			
Total Depth				2230			

