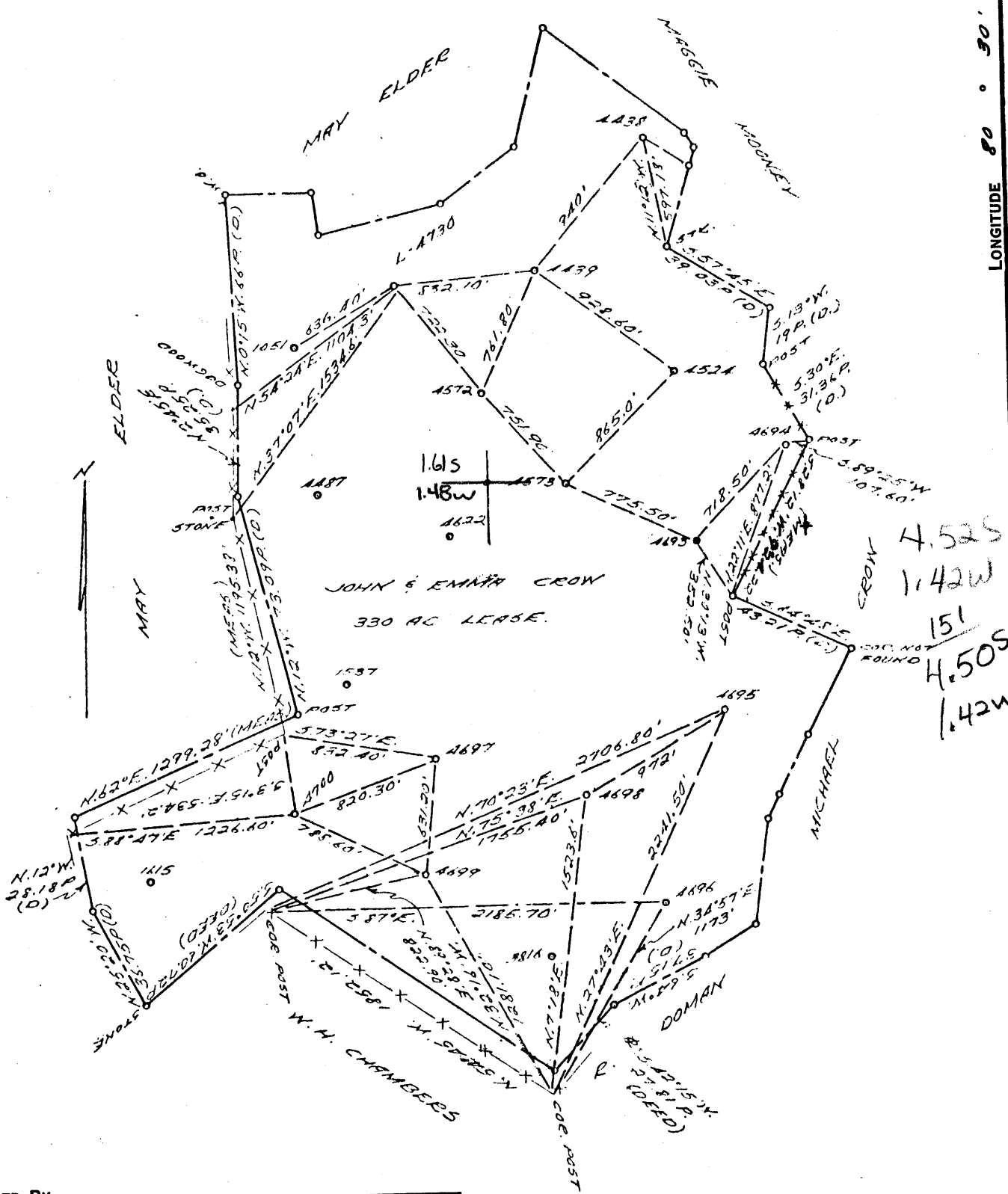


LATITUDE 40 ° 00
39°57'30"

LONGITUDE 80 ° 30'



COAL OWNED BY _____

NEW LOCATION Storage

DRILL DEEPER

ABANDONMENT

0-25-10

COMPANY THE MANUFACTURERS LIGHT & HEAT

ADDRESS 800 UNION TRUST BLDG. PGH. PA.

FARM JOHN AND EMMA CROW

TRACT _____ ACRES 330 LEASE No. 2900

WELL (FARM) No. 12 SERIAL No. 4693

ELEVATION (SPIRIT LEVEL) 1146.13'

QUADRANGLE CAMERON DE

COUNTY MARSHALL DISTRICT WEBSTER

ENGINEER John A. Louden (O.S.)

ENGINEER'S REGISTRATION No. 12710

FILE No. _____ DRAWING No. Y-25-579

DATE 20 JUNE 62 SCALE 1" = 800'

STATE OF WEST VIRGINIA
DEPARTMENT OF MINES
OIL AND GAS DIVISION
CHARLESTON

WELL LOCATION MAP

FILE No. MARS-475

+ DENOTES LOCATION OF WELL ON UNITED STATES TOPOGRAPHIC MAPS. SCALE 1 TO 62,500. LATITUDE AND LONGITUDE LINES BEING REPRESENTED BY BORDER LINES AS SHOWN.

- DENOTES ONE INCH SPACES ON BORDER LINE OF ORIGINAL TRACING.

TCP 9-0 22



STATE OF WEST VIRGINIA
DEPARTMENT OF MINES
OIL AND GAS DIVISION

Gas Show

Quadrangle CAMERON

WELL RECORD

Permit No. MARS-475

Oil or Gas Well Gas
(KIND)

Company The Mfrs. Lt. and Ht. Co.
Address 800 Union Trust Bldg., Pittsburgh 19, Pa.
Farm John and Emma Crow Acres 330
Location (waters) _____
Well No. 4693 Elev. 1146.13 G.L.
District Webster County Marshall
The surface of tract is owned in fee by _____
Address _____
Mineral rights are owned by _____
Address _____
Drilling commenced August 28, 1962
Drilling completed September 2, 1962
Date Shot 9/2/62 From Big Injun To _____
With _____
Open Flow /10ths Water in _____ Inch
/10ths Merc. in _____ Inch
Volume Dry Hole _____ Cu. Ft.
Rock Pressure _____ lbs. _____ hrs.
Oil _____ bbls., 1st 24 hrs.
Fresh water 62 feet _____ feet
Salt water 1572 feet _____ feet

Casing and Tubing	Used in Drilling	Left in Well	Packers
Size			
16			Kind of Packer
13 3/8"	66'4"	66'4"	
10			Size of
8 5/8"	678'	678'	
8			Depth set
5 3/16			
3			Perf. top
2			Perf. bottom
Liners Used			Perf. top
			Perf. bottom

CASING CEMENTED _____ SIZE _____ No. Ft. _____ Date _____
COAL WAS ENCOUNTERED AT 596 FEET _____ INCHES
_____ FEET _____ INCHES _____ FEET _____ INCHES
_____ FEET _____ INCHES _____ FEET _____ INCHES

Formation	Color	Hardness Soft XXX THICKNESS	Top	Bottom	Oil, Gas or Water	Depth Found	Remarks
Pittsburgh Coal		6	596	602	Water - 62'		
Sand		40	1012	1052			
Sand		10	1112	1122			
Sand		15	1237	1252			
Gas Sand		35	1262	1297			
Sand 2nd c.r.		15	1317	1332	Show of gas -	1317'	
1st Salt Sand		35	1352	1387			
Sand 2nd c.r.		35	1422	1457	Show of gas -	1457'	
3rd Salt Sand		120	1522	1642	Show of gas -	1552'	
Big Injun			1692		Water -	1572'	
Drilled 7 7/8" hole to 1845'				1845	Zones indicative of possible porosity from correlation and drilling times:		
Total Depth					1767-1776 Dry Hole		
					1778-1789		
					Changed to gas to drill at 1322' at 11:12 A.M. 9/1/62 killed well 1:45 A.M. 9/2/62		

