

COAL OWNED BY  
**RECONDITION & PART. PLUG.**   
**NEW LOCATION**   
**DRILL DEEPER**   
**ABANDONMENT**

I, the undersigned, being duly sworn, depose and say that the above is a true and correct copy of the original map as shown to me by the undersigned, and that the same is a true and correct copy of the original map as shown to me by the undersigned, and that the same is a true and correct copy of the original map as shown to me by the undersigned.  
Robert M. Heill 361E (J.F.)

COMPANY THE MANUFACTURERS LIGHT & HEAT CO.  
 ADDRESS 800 UNION TRUST BLDG. PGH. PA.  
 EMP. WM. F. REESE  
 MAP 0-25-24 ACRES 45 LEASE No. 31093  
 WELL (FARM) No. 2 SERIAL No. A633  
 ELEVATION (SPIRIT LEVEL) 1245.7  
 QUADRANGLE CAMELON 7.5 MIN. SC  
 COUNTY MARSHALL DISTRICT LIBERTY  
 DOI U.S. DEPT. OF MINES B.M. U.S.G.S.  
0-127 ON FISH CREEK  
 FILE No. \_\_\_\_\_ DRAWING No. V-25-699  
 DATE 19 MAR. 1963 SCALE 1" = 400'

STATE OF WEST VIRGINIA  
 DEPARTMENT OF MINES  
 OIL AND GAS DIVISION  
 CHARLESTON

**WELL LOCATION MAP**

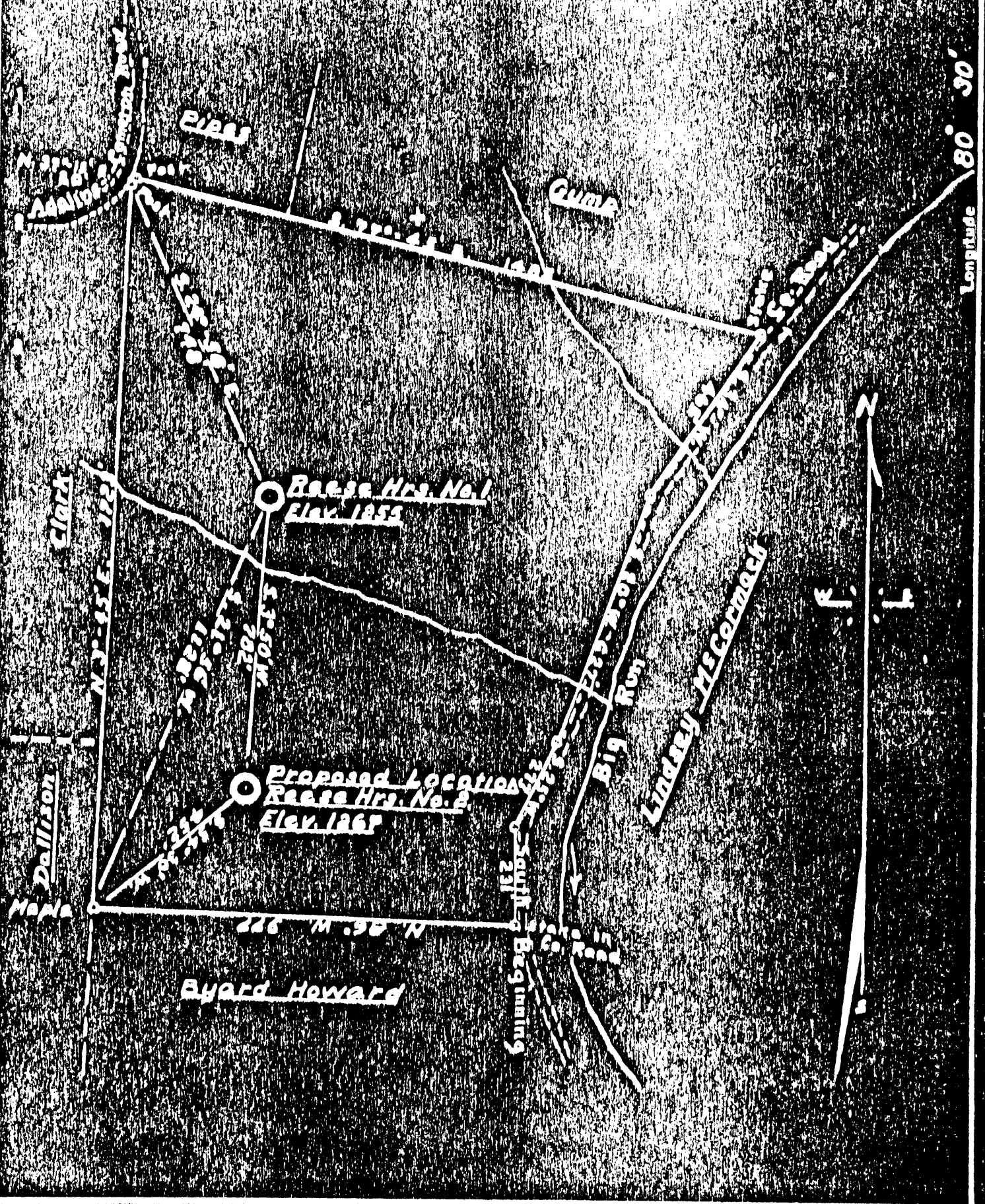
FILE No. MARS-487  
Was Marshall 179

+ DENOTES LOCATION OF WELL ON UNITED STATES TOPOGRAPHIC MAPS, SCALE 1 TO 62,500. LATITUDE AND LONGITUDE LINES BEING REPRESENTED BY BORDER LINES AS SHOWN.

- DENOTES ONE INCH SPACES ON BORDER LINE OF ORIGINAL TRACING.

Latitude 39° 50'

Longitude 80° 30'



Company CAMERON LIGHT & HEAT Co.  
 Address CAMERON, W. VA.  
 Farm REESE HRS.  
 Tract 1 Area 46 Lease No.       
 Well (Farm) No. 102 Serial No.       
 Quadrangle CAMERON  
 County MARSHALL  
 District LIBERTY  
 Engineer London W. Samsom  
 Engineer's Registration No. 509  
 File No.      Drawing No.       
 Date Mar 24 1937 Scale 1 inch = 300 ft.

STATE OF WEST VIRGINIA  
 DEPARTMENT OF MINES  
 OIL AND GAS DIVISION  
 CHARLESTON

**WELL LOCATION MAP**  
 FILE NO.     

+ Denotes location of well on United States Topographic Maps, scale 1 to 62,500, latitude and longitude lines being represented by border lines as shown.

- Denotes one inch spaces on border line at original tracing.

**WEST VIRGINIA DEPARTMENT OF MINES**

**OIL AND GAS DIVISION**

Permit No. Mars 79 *now Marshall 487* W E L L R E C O R D

Gas Well

Cameron Qugd

CASING & TUBING

Company	Cameron Heat & Light Co.	10	232'8"	
Address	Cameron, W.Va.	8 1/4	1299'2"	1299'2"
Farm	W.H.Reese Acres 44	6 5/8	2005'	2005'
Location	Big Run			
Well No.	1 Elev. 1255			
District	Liberty County Marshall			
Surface	Cameron Heat & Light Co.			
Address	Cameron, W.Va.			
Mineral	Cameron Heat & Light Co. & H.H.Pipes			
Address	Cameron, W.Va.			
Drilling	Commenced April 26, 1937			
	Completed June 9, 1937			
Date Shot	June 7	Depth	2891-2896	
Open Flow	18/10ths W. in 1-1/2 orifice			
Volume	74,853 Cu.Ft.			
Rock Press.	42 lbs.-24 hrs.			

Formation Color <sup>Hor</sup> Top Bottom Result					Formation Color <sup>Hor</sup> Top Bottom Result				
Rock	Dark	S	18	30	Slate	Dark	S	1314	1372
Sand	White	H	30	42	Sand	White	H	1372	1413
Slate	Dark	S	42	90	Slate	Black	S	1413	1455
Sand	White	H	90	170	Lime	White	H	1455	1494
Slate	Dark	S	170	200	Sand	White	H	1494	1612
Red Rock	Red	S	200	209	Slate	Dark	S	1612	1620
Rock	White	H	209	233	Sand	White	H	1620	1680
Slate	Dark	S	233	300	Lime	White	H	1680	1700
Lime	White	H	300	329	Sand	White	H	1700	1740
Pink Rock	Pink	S	329	350	Slate	Dark	S	1740	1780
Lime	White	H	350	374	Lime	White	H	1780	1800
Slate	Dark	S	374	390	Slate	Dark	S	1800	1855
Lime	White	H	390	415	Sand	White	H	1855	1936
Slate	Dark	S	415	440	Slate	Dark	S	1936	1966
Lime	White	H	440	460	Lime	White	H	1966	1979
Rock	Gray	S	460	472	Pencil Cave		S	1979	1982
Slate	Dark	S	472	530	Big Lime	White	H	1982	2031
Lime	White	H	530	599	Big Injun	White	H	2031	2285
Slate	Dark	S	599	655	Slate	Dark	S	2285	2305
Lime	White	H	655	662	Lime	White	H	2305	2515
Slate	Dark	S	662	675	Slate	Dark	S	2515	2545
Lime	White	H	675	788	Lime	White	H	2545	2608
Coal(Mpl.Tn.)	Black	S	788	791	Slate	Dark	S	2608	2625
Lime	White	H	791	835	30 ft. <i>...</i>	White	H	2625	2700
Slate	Dark	S	835	886	Slate	Dark	S	2700	2740
Pitts.Coal		S	886	889	Red Rock	Red	S	2740	2761
Sand	White	H	889	901	50 ft. <i>...</i>	Pink	S	2761	2771
Slate	Dark	S	901	938	Slate	Dark	S	2771	2826
Red Rock	Red	S	938	940	Sand	White	H	2826	2861
Slate	Dark	S	940	960	Slate	Dark	S	2861	2884
Rock	Blue	S	960	965	Gordon Sand		H	2884	2927
Sand	White	H	965	1020	Sand	White	H	2927	2956
Red Rock		S	1020	1047	4th Sand	White	H	2956	2965
Sand	White	H	1047	1073					
Red Rock	White	S	1073	1076					
Sand	White	H	1076	1086					
Rock	White	H	1086	1116					
Red Rock		S	1116	1130	TOTAL DEPTH			3005	
Slate		S	1130	1152					
Red Rock		S	1152	1181					
Slate	Dark	S	1181	1193					
Sand	White	H	1193	1206					
Slate	Dark	S	1206	1244					
Red Rock		S	1244	1269					
Lime	White	H	1269	1276					
Red Rock		S	1276	1287					
Little Dunkard		H	1287	1314					

Gas  
2894-  
2896  
Gas  
2956-  
2959