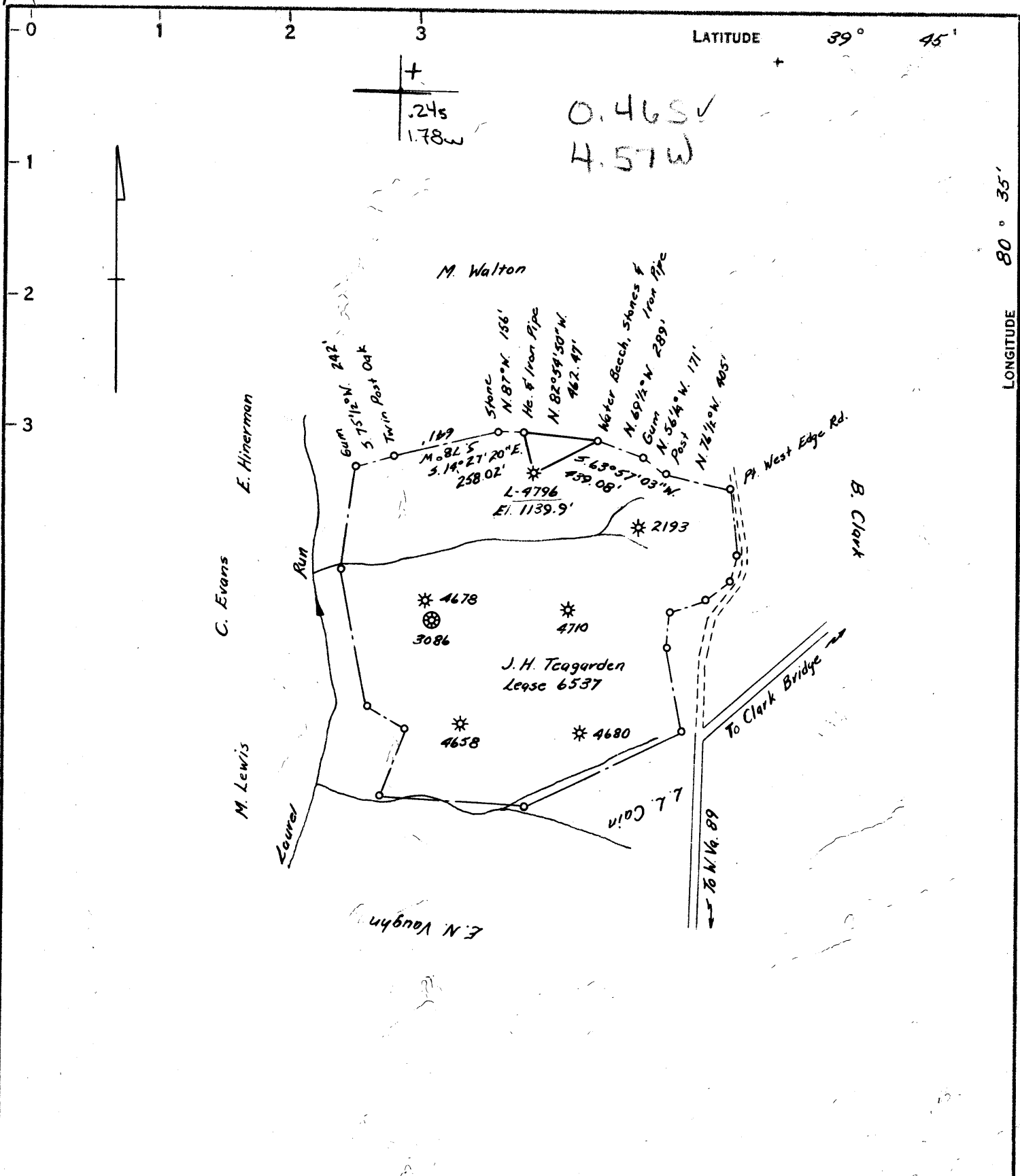


M



COAL OWNED BY M. A. Hanna Coal Co.

Storage

NEW LOCATION

DRILL DEEPER

ABANDONMENT

COMPANY The Manufacturers Light And Heat Company

ADDRESS 800 Union Trust Bldg. Pittsburgh, Penna.

FARM J. H. Teagarden

P-2513 ACRES 91 LEASE NO. 6537

WELL (FARM) NO. 7 SERIAL NO. L-4796

ELEVATION (SPIRIT LEVEL) 1139.9'

QUADRANGLE Littleton W.V. & Pa. 7 1/2' NW 5

COUNTY Marshall DISTRICT Liberty

U.S.G.S. B.M. B-127

FILE NO. _____ DRAWING NO. Y-25-732

DATE April 19, 1963 SCALE 1" = 800'

STATE OF WEST VIRGINIA
DEPARTMENT OF MINES
OIL AND GAS DIVISION
CHARLESTON

WELL LOCATION MAP

FILE NO. MARS-497

+ DENOTES LOCATION OF WELL ON UNITED STATES TOPOGRAPHIC MAPS. SCALE 1 TO 62,500. LATITUDE AND LONGITUDE LINES BEING REPRESENTED BY BORDER LINES AS SHOWN.

- DENOTES ONE INCH SPACES ON BORDER LINE OF ORIGINAL TRACING.

Robert M. Hull 361-E (J.F.)



STATE OF WEST VIRGINIA
DEPARTMENT OF MINES
OIL AND GAS DIVISION

Quadrangle Littleton

WELL RECORD

Storage
305

Permit No. MARS-497

Oil or Gas Well (KIND)

Company The Mfrs. Lt. and Ht. Co.
Address 800 Union Trust Bldg., Pittsburgh 19, Pa.
Farm J. H. Teagarden Acres 91
Location (waters) _____
Well No. 4796 Elev. 1140.00'
District Liberty County Marshall
The surface of tract is owned in fee by _____
Address _____
Mineral rights are owned by _____
Address _____
Drilling commenced May 21, 1963
Drilling completed June 13, 1963
Date Shot 6/13/63 From Maxton To Big injun
With Orifice Gas Well Tester
Open Flow 1.4 /10ths Water in _____ Inch
1.4 /10ths Merc. in 1 1/2 Inch
Volume 288,500 Cu. Ft.
Rock Pressure 479 lbs. 24 hrs.
Oil _____ bbls., 1st 24 hrs.
Fresh water _____ feet
Salt water _____ feet

Casing and Tubing	Used in Drilling	Left in Well	Packers
Size			
16			Kind of Packer
18 3/8"	30'	30'	
10			Size of
8 1/2 5/8"	848'	848'	
6 1/2"			Depth set
5 1/2 1/2"	2145'	2145'	
8			Perf. top
8			Perf. bottom
Liners Used			Perf. top
			Perf. bottom

CASING CEMENTED	SIZE	No. Ft.	Date
COAL WAS ENCOUNTERED AT	<u>818</u>	FEET	INCHES
		FEET	INCHES
		FEET	INCHES

Formation	Color	THICKNESS	Top	Bottom	Oil, Gas or Water	Depth Found	Remarks
Pittsburgh Coal		8	818	826			
Murphy Sand		10	937	947			
Big Dunkard		73	1317	1390			
1st Salt Sand		15	1500	1515			
3rd Salt Sand		18	1697	1715			
Maxton Sand		30	1830	1860	Perforated	1830' to 1860'	
Lower Maxton Sand		7	1900	1907			
Big Lime		42	1910	1952			
Big Injun Sand			1954		Perforated	1978' to 1986'	
Total Depth				2116'			
5 1/2" Float	Shoe set at			2145'	1910	1830	1140
5 1/2" Insert	Ck. Valve			2127'	1140	1140	818
					770	290	327

