

39°45'00" P

Latitude

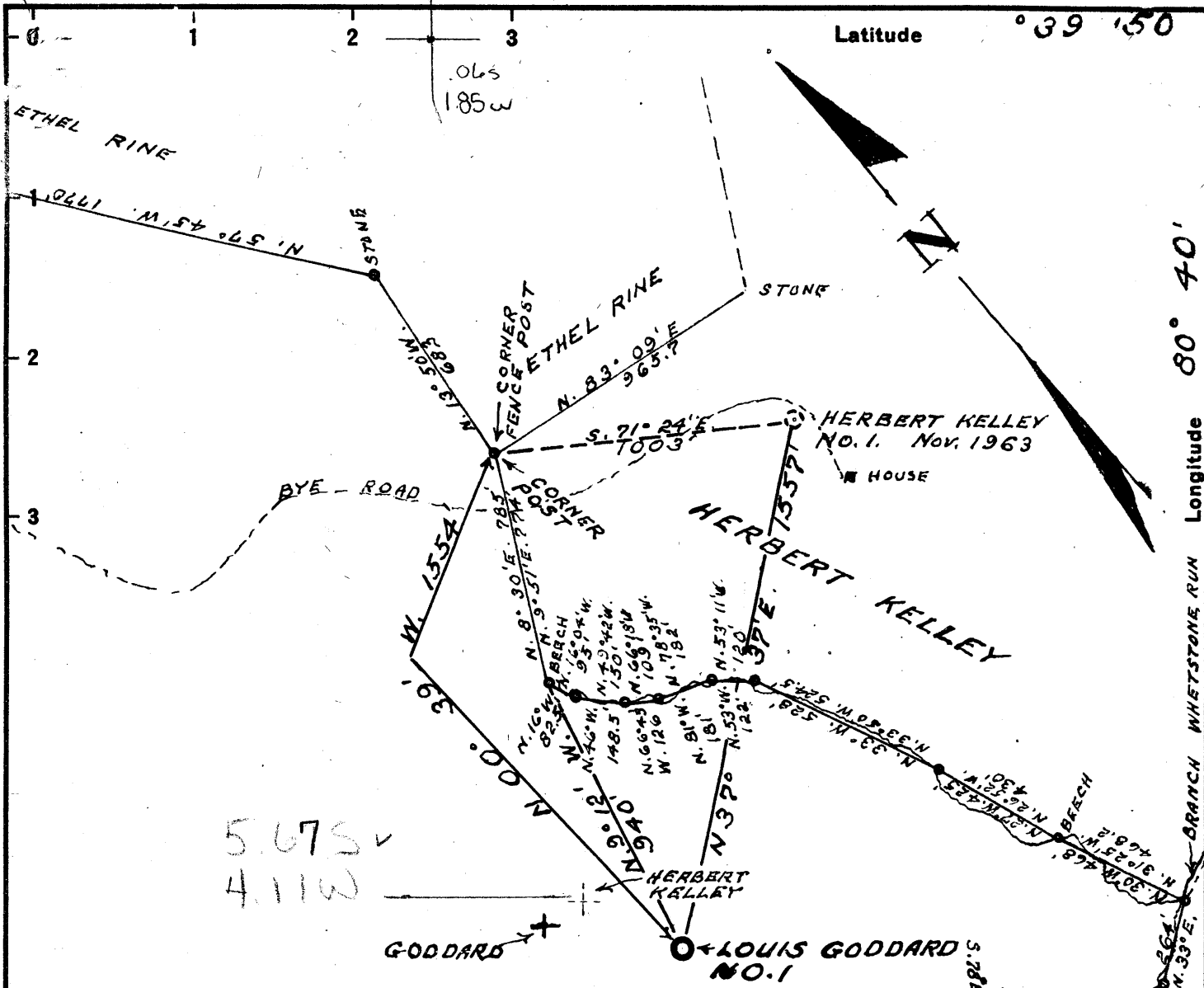
° 39 50

80° 40' Longitude

WHETSTONE RUN

BRANCH

W. R. GATTS



ELEVATION RECKONED FROM INTERSECTION  
 "RYAN"  
 BURCH RIDGE & RINE RIDGE ROADS-NEW MARTINSVILLE  
 QUADRANGLE  
 EASTERN PART-LOUIS GODDARD FARM  
 274 TOT. AC.-10 AC. RESERVED-NET 264 ACRES  
 DESCRIPTION-DB. 242 P472

DEGREE OF ACCURACY  
1" IN 200'

I, THE UNDERSIGNED, HEREBY CERTIFY THAT THIS  
 MAP IS CORRECT, TO THE BEST OF MY KNOWLEDGE  
 & BELIEF, AND SHOWS ALL THE INFORMATION RE-  
 QUIRED BY PARAGRAPH 6 OF THE RULES & REGU-  
 LATIONS OF THE OIL & GAS SECT. OF W.VA. MINING LAWS.

- New Location...
- Drill Deeper.....
- Abandonment.....

GIVEN UNDER MY THIS 2ND DAY OF MARCH-1964  
 SIGNED: *Gordon W. Sammons* - REG. PROF. ENGR., - 509

Company MORRIS FRUCHTMAN-ET. AL.  
 Address 905- CHICAGO ST.,  
TOLEDO-OHIO  
 Farm LOUIS GODDARD  
 Tract \_\_\_\_\_ Acres 264 Lease No. \_\_\_\_\_  
 Well (Farm) No. 1 Serial No. \_\_\_\_\_  
 Elevation (Spirit Level) 1248  
 Quadrangle CAMERON SW  
 County MARSHALL District FRANKLIN  
 Engineer Gordon W. Sammons  
GORDON W. SAMMONS  
 Engineer's Registration No. 509  
 File No. \_\_\_\_\_ Drawing No. \_\_\_\_\_  
 Date MAR-2-1964 Scale 1" = 500'

STATE OF WEST VIRGINIA  
 DEPARTMENT OF MINES  
 OIL AND GAS DIVISION  
 CHARLESTON

**WELL LOCATION MAP**  
 FILE NO. MARS-522

+ Denotes location of well on United States  
 Topographic Maps, scale 1 to 62,500, lat-  
 itude and longitude lines being represented  
 by border lines as shown.

- Denotes one inch spaces on border line  
 of original tracing.

"IMPERIAL" TRACING CLOTH  
 K & E CO., N. Y.



STATE OF WEST VIRGINIA  
DEPARTMENT OF MINES  
OIL AND GAS DIVISION 3

Rotary   
Spudder   
Cable Tools   
Storage

Quadrangle Camden

Permit No. Mars-522

WELL RECORD

Oil or Gas Well Gas

Company Morris Fruchtman, et al  
Address 805 Chicago Street, Toledo, Ohio  
Farm Louis Goddard Acres 264  
Location (waters) \_\_\_\_\_  
Well No. 1 (One) Elev. 1248'  
District Franklin County Marshall  
The surface of tract is owned in fee by Louis Goddard,  
R.F.D. No. 3, Address Proctor, West Va,  
Mineral rights are owned by same  
Address \_\_\_\_\_

Drilling commenced March 25, 1964  
Drilling completed May 2, 1964  
Date Shot No From \_\_\_\_\_ To \_\_\_\_\_  
With \_\_\_\_\_

Open Flow \_\_\_\_\_ /10ths Water in \_\_\_\_\_ Inch  
\_\_\_\_\_ /10ths Merc. in \_\_\_\_\_ Inch  
Volume 55 M \_\_\_\_\_ Cu. Ft.  
Rock Pressure 40 lbs. \_\_\_\_\_ hrs.  
Oil \_\_\_\_\_ bbls., 1st 24 hrs.

WELL ACIDIZED No  
WELL FRACTURED No

Casing and Tubing	Used in Drilling	Left in Well	Packers
Size			Kind of Packer _____
16			<b>Anchor</b>
13			Size of _____
10	280°	00	<b>2 3/8 to 6 3/8"</b>
8 1/2	1368°	1368°	Depth set <b>2840°</b>
<del>8 1/2</del> 7"	1900°	00	
5 3/16			
3			Perf. top _____
2 3/8ths (tubing)		2891°	Perf. bottom _____
Liners Used			Perf. top _____
			Perf. bottom _____

CASING CEMENTED \_\_\_\_\_ SIZE \_\_\_\_\_ No. Ft. \_\_\_\_\_ Date \_\_\_\_\_

COAL WAS ENCOUNTERED AT 756-57 FEET \_\_\_\_\_ INCHES  
842-48 FEET \_\_\_\_\_ INCHES FEET \_\_\_\_\_ INCHES  
FEET \_\_\_\_\_ INCHES FEET \_\_\_\_\_ INCHES

RESULT AFTER TREATMENT

ROCK PRESSURE AFTER TREATMENT

Fresh Water \_\_\_\_\_ Feet Salt Water \_\_\_\_\_ Feet

Formation	Color	Hard or Soft	Top	Bottom	Oil, Gas or Water	Depth	Remarks
Clay			0	8			
Red Rock			8	18			
Sandstone			18	25			
Red Rock			25	92			
Sandstone			92	110			
Shale			110	122			
Red Rock			122	145			
Shale			145	157			
Sandstone			157	167			
Red Rock			167	180			
Shale			180	206			
limestone			206	212			
Shale			212	222			
Limestone			222	227			
Shale			227	240			
Red Rock			240	248			
Sandy Shale			248	259			
Sandstone			259	285			
Shale			285	298			
Red Rock			298	315			
Shale			315	335			
Limestone			335	339			
Shale			339	360			
Red Rock			360	368			
Limestone			368	382			
Shale			382	402			
Limestone & shale			402	424			
Dark Shale			424	432			



Formation	Color	Hard or Soft	Top <sup>3</sup>	Bottom	Oil, Gas or Water	Depth Found	Remarks
Limestone			483	642			
Shale & Shells			642	752			
Limestone			882	949			
Black Shale			949	1003			
Limestone			980	983			
Shale & Red Rock			983	999			
Limestone			999	624			
Shale & Shells			624	630			
Red Rock			630	633			
Shale			633	643			
Limestone			643	680			
Shale			680	683			
Limestone			683	709			
Shale & Limestone			709	748			
Dark Shale			748	756			
Waplesville Coal			756 <sup>796</sup>	797 <sup>791</sup>			
Shale			797	762			
Limestone			762	773			
Shale & Limestone			773	819			
Limestone			819	826			
Shale			826	836			
Limestone			836	842			
Shale			842 <sup>842</sup>	848 <sup>849</sup>			
Fittsburgh Coal <sup>Pyg Coal</sup>			848	854			
Shale			854	860			
Limestone			860	879			
Shale			879	885			
Limestone			885	894			
Shale & Limestone			894	908			
Sandstone			908	916			
Red Rock			916	926			
Shale			926	930			
Limestone			930	938			
Red Rock & Shale			938	1004			
Limestone			1004	1010			
Shale			1010	1032			
Red Rock			1032	1041			
Shale & Shells			1041	1087			
Sandstone			1087 <sup>1097</sup>	1109 <sup>1109</sup>	show oil		
Shale			1109	1123			
Sandy Limestone			1123	1126			
Red Rock			1126	1143			
Limestone			1143	1198			
Shale	dark		1198	1208			
Sandy Shale			1208	1219			
Red Rock			1219	1245			
Shale			1245	1253			
Shale & Sandstone			1253	1264			
Shale			1264	1302			
Sandstone			1302	1320			
Shale			1320	1336			
Limestone			1336	1342			
Shale			1342	1352			
Sandstone	Big Dunk		1352 <sup>1358</sup>	1444 <sup>1440</sup>	show oil	1412-1422	
Shale & sandstone			1444	1467			
Sandstone	Gras Sand		1467 <sup>1467</sup>	1498 <sup>1498</sup>	hole full water -	1205	
Sandstone & Shale			1498	1717			
Sandy Shale			1717	1790			
Sandstone			1790	1861			
Slate			1861	1909			
Big Lim			1909 <sup>1902</sup>	1967 <sup>1967</sup>			
Sand	Big Lim	hard	1967 <sup>1967</sup>	1988			
Broken Sand			1988	2000			

May 1, 1902

APPROVED Joseph H. McCay, Owner  
 By Joseph H. McCay (Title)



STATE OF WEST VIRGINIA  
DEPARTMENT OF MINES  
OIL AND GAS DIVISION 3A

Rotary   
Spudder   
Cable Tools   
Storage

(continued from sheet 1)

Quadrangle Cameron

WELL RECORD

Oil or Gas Well \_\_\_\_\_ (KIND)

Permit No. Mars-522

Company Morris Fruchtman, et al  
Address 805 Chicago Street, Toledo, Ohio  
Farm Louis Goddard Acres 264  
Location (waters) \_\_\_\_\_  
Well No. 1 (One) Elev. 1248'  
District \_\_\_\_\_ County \_\_\_\_\_  
The surface of tract is owned in fee by \_\_\_\_\_  
Address \_\_\_\_\_  
Mineral rights are owned by \_\_\_\_\_  
Address \_\_\_\_\_  
Drilling commenced March 25, 1964  
Drilling completed May 2, 1964  
Date Shot \_\_\_\_\_ From \_\_\_\_\_ To \_\_\_\_\_  
With \_\_\_\_\_  
Open Flow \_\_\_\_\_ /10ths Water in \_\_\_\_\_ Inch  
\_\_\_\_\_ /10ths Merc. in \_\_\_\_\_ Inch  
Volume \_\_\_\_\_ Cu. Ft.  
Rock Pressure \_\_\_\_\_ lbs. \_\_\_\_\_ hrs.  
Oil \_\_\_\_\_ bbls., 1st 24 hrs.  
WELL ACIDIZED \_\_\_\_\_  
WELL FRACTURED \_\_\_\_\_

Casing and Tubing	Used in Drilling	Left in Well	Packers
Size			Kind of Packer _____
16			
13			Size of _____
10			Depth set _____
8 1/4			
6 5/8			Perf. top _____
5 3/16			Perf. bottom _____
3			Perf. top _____
2			Perf. bottom _____
Liners Used			

CASING CEMENTED \_\_\_\_\_ SIZE \_\_\_\_\_ No. Ft. \_\_\_\_\_ Date \_\_\_\_\_

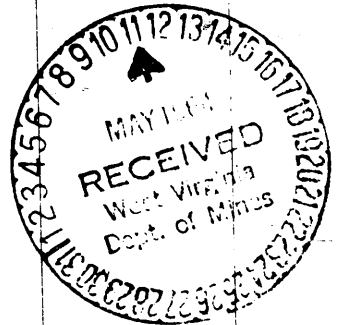
COAL WAS ENCOUNTERED AT \_\_\_\_\_ FEET \_\_\_\_\_ INCHES  
\_\_\_\_\_ FEET \_\_\_\_\_ INCHES \_\_\_\_\_ FEET \_\_\_\_\_ INCHES  
\_\_\_\_\_ FEET \_\_\_\_\_ INCHES \_\_\_\_\_ FEET \_\_\_\_\_ INCHES

RESULT AFTER TREATMENT

ROCK PRESSURE AFTER TREATMENT

Fresh Water \_\_\_\_\_ Feet \_\_\_\_\_ Salt Water \_\_\_\_\_ Feet \_\_\_\_\_

Formation	Color	Hard or Soft	Top	Bottom	Oil, Gas or Water	Depth	Remarks
Sandy Shale			2000	2070			
Sand			2070	2221			
Shale			2221	2300			
lime shells			2300	2310			
Shale			2310	2373			
Sand			2373	2410			
Lime			2410	2428			
Shale & Limestone			2428	2582			
Sand			2582	2592			
Shale			2592	2638			
Pink Rock			2638	2650			
Limastone			2650	2662			
Pink Shale			2662	2730			
Shale			2730	2824			
Sand			2824	2830			
Shale			2830	2845			
Sand			2845	2874	Gas	2848-51'	
Shale			2874	2895			
Total Depth				2895			



1902 1967  
1248 1248  
534 719