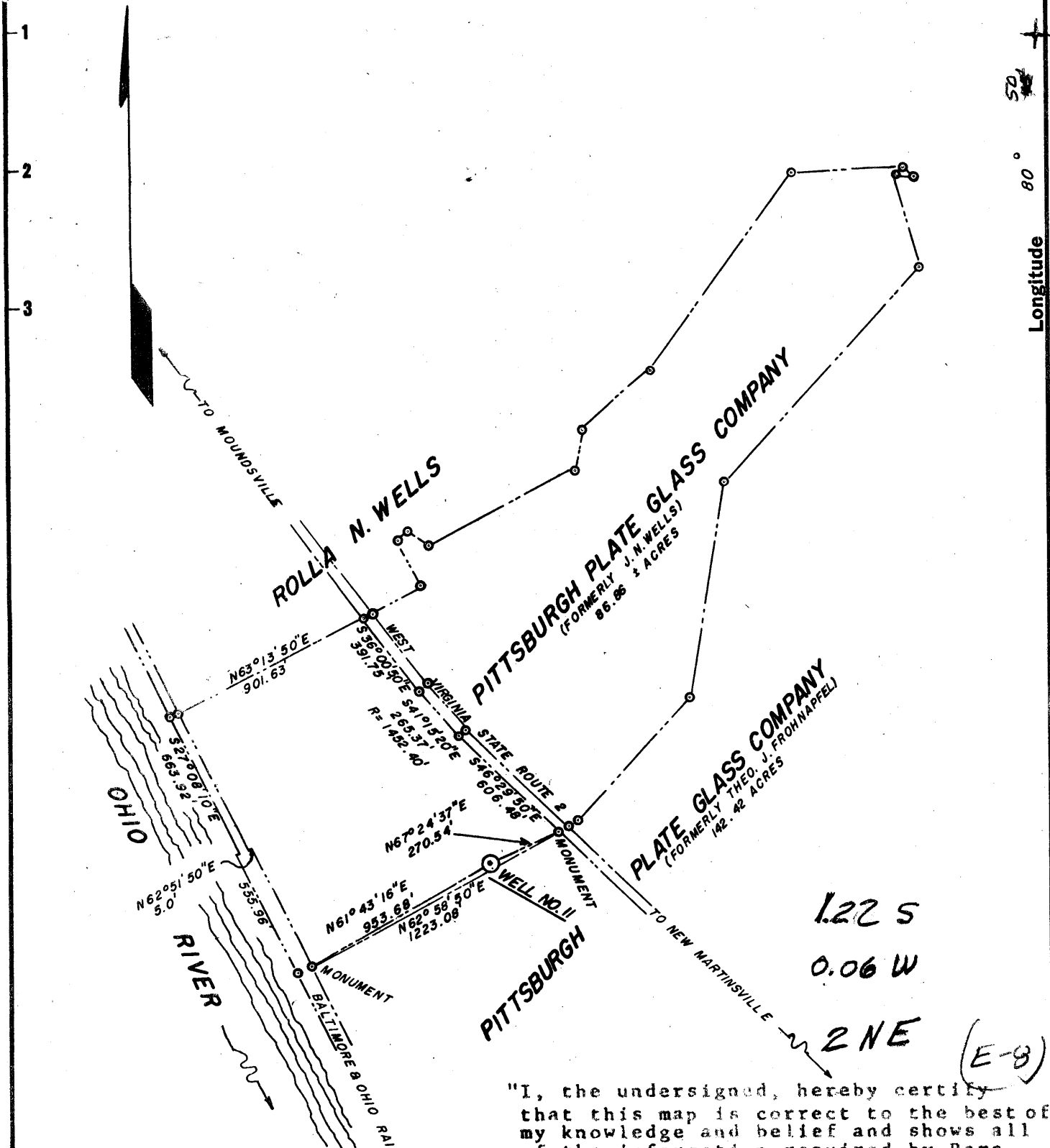


Latitude 39° 45'



New Location
 Drill Deeper
 Abandonment

"I, the undersigned, hereby certify that this map is correct to the best of my knowledge and belief and shows all of the information required by Paragraph 5 of the rules and regulations of the Oil and Gas Section of the Mining Laws of West Virginia."
 By *J. A. Anderson*

Company PITTSBURGH PLATE GLASS CO.
 Address NEW MARTINSVILLE W.VA.
 Farm PPG (FORMERLY J.N. WELLS)
 Tract _____ Acres 86.86 Lease No. _____
 Well (Farm) No. 11 Serial No. _____
 Elevation (Spirit Level) 636.0
 Quadrangle NEW MARTINSVILLE - NC.
 County MARSHALL District FRANKLIN
 Engineer J.A. ANDERSON *J.A. Anderson*
 Engineer's Registration No. 1677
 File No. _____ Drawing No. SK-41139-G
 Date APRIL 2, 1964 Scale 1" = 600'

(Degree of accuracy = one part in 10,000)
 STATE OF WEST VIRGINIA
 DEPARTMENT OF MINES
 OIL AND GAS DIVISION
 CHARLESTON

WELL LOCATION MAP
 FILE NO. MARS-523

+ Denotes location of well on United States Topographic Maps, scale 1 to 62,500, latitude and longitude lines being represented by border lines as shown.
 - Denotes one inch spaces on border line of original tracing.

SK-41139-G



STATE OF WEST VIRGINIA
DEPARTMENT OF MINES
OIL AND GAS DIVISION 6

Rotary
Spudder
Cable Tools
Storage

Quadrangle New Martinsville

Permit No. MARS 523

WELL RECORD

Oil or Gas Well Brine
(KIND)

Company Pittsburgh Plate Glass Company
Address New Martinsville, West Virginia
Farm J. N. Wells Acres _____
Location (waters) East Bank Ohio River - Natrium
Well No. 11 Elev. 639
District Franklin County Marshall
The surface of tract is owned in fee by Pittsburgh Plate Glass Company Address New Martinsville
Mineral rights are owned by Pittsburgh Plate Glass Company Address New Martinsville
Drilling commenced April 18, 1964
Drilling completed July 4, 1964
Date Shot - From - To -
With -
Open Flow /10ths Water in - Inch
/10ths Merc. in - Inch
Volume - Cu. Ft.
Rock Pressure - lbs. - hrs.
Oil - bbls., 1st 24 hrs.
WELL ACIDIZED _____
WELL FRACTURED _____

Casing and Tubing	Used in Drilling	Left in Well	Packers
Size			
16	62	62	Kind of Packer
13			Bridge Plug
10 3/4	1608	1608	Size of
8 1/2			7"
7"	8454	8454	Depth set
5 3/16			7390
3			Perf. top
2			Perf. bottom
Liners Used			Perf. top
			Perf. bottom

CASING CEMENTED 10-3/4 SIZE 1608 No. Ft. April 23 Date

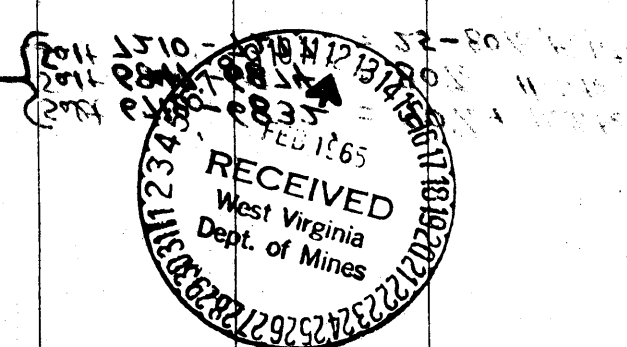
COAL WAS ENCOUNTERED AT See Log FEET INCHES
FEET INCHES FEET INCHES
FEET INCHES FEET INCHES

RESULT AFTER TREATMENT _____

ROCK PRESSURE AFTER TREATMENT _____

Fresh Water _____ Feet Salt Water _____ Feet

Formation Unit	Color	Hard or Soft	Top	Bottom	Oil, Gas or Water	Depth	Remarks
Monongahela			0	256			
Conemaugh			256	783			
✓ Pittsburgh Coal			256	261		1288	1375
✓ Ames Lime			415	423		639	639
✓ Saltsburg Sand (1st Cown Run)			503	527		649	736
Brush Creek Lime			710	716			
Allegheny			783	1070			
Upper Freeport Lime			789	800			
✓ Lower Kitt. Coal Hor.			1024	1027			
Pottsville Form.			1070	1245			
✓ Homewood Sands			1070	1122			
Maxton Sand			1210	1245			
Top Miss. System			1245				
✓ Little Lime			1257	1278			
✓ Pencil Cave Shale			1278	1288			
✓ Greenbrier Lime "Big Lime"			1288	1375			
Pocono			1375	1620			
✓ Weener, Big Injun			1375	1620			
✓ Weir			1757	1840			
Berea Sand			1950	1982			
Horizon							
Top Devonian System			1982				
✓ Catskill ?			1982	2295			
✓ Chemung			2295	3460			
✓ Riley			2905	2952			
✓ Benson			3052	3058			
✓ Brallier			3460	4887			



PITTSBURGH
PAUL DUNN COMPANY
GEOLOGICAL DIVISION
PITTSBURGH, PA. DEPARTMENT

PPG. Brine well No 11.

No 2 Brine Field - Natron Plant.
Geological Markers As Ticked From the Gamma Ray log.
10-17-64

Formation	Unit	Top	Bottom	Remarks
Monongahela		0	256	
Conemaugh		256	783	
Pittsburgh Coal		256	261	
Ames Lm.		415	423	
Saltburg Sol.	(1st down stem)	503	527	
Brush Creek Lm.		710	716	
Allegheny		783	1070	
Upper Freeport Lm.		789	800	
Lower Kitt. Coal Hor.		1024	1029	
Pottsville Form.		1070	1245	
Homewood - sds.		1070	122	
Maxton Sol.		3210	1245	
Top Miss. System		1245		
Little Lm.		1245	1275	
Pencil lead shale		1275	1280	
Greenbrier Lm.	"Big Lm."	1288	1375	
Polono		1375	1948	
Keener-Big Injun		1375	1620	
weir		1757	1840	
Berea sd	{	1950	1960	
Horizon				
Top. Devonian System	1982 -			
Catskill	-?	1982	2295	
Chemung		2295	3460	
Brallier	Wiley	2905	2952	
	Benson	3052	3052	
		3960	4487	
Hartell		4887	4950	
Hamilton		4950	5232	
Marcelsburg		5232	5822	
Triassic beds		5780	5780	
		5805	5812	

UNITED STATES
 GEOLOGICAL SURVEY
 CITY OF WASHINGTON
 DISTRICT OF COLUMBIA

	10	11	12	13	14	15	16	17	18	19	20	21	22	23	24	25	26	27	28	29	30	31	32	
Onondaga Lm.	5823	-	6048																					
Oriskany (bridge)	6048	-	6132																					
" (shiner)	6132	-	6287																					
Helderberg	6287	-	6405																					
Top Silurian.	6405	-																						
Kupper Lm.	6405	-	6507																					
Salina.	6507	-	7492																					
Lockport	7492	-	7833																					
Keeper	7804	-	7833																					
Rose Hill Clinton.	7833	-	8282																					
Irondequoit	8149	-	8229																					
(wacker shell)																								
Reynolds	8238	-	8246																					
Theriot	8261	-	8277																					
Medina.	8285	-	8483																					
Med. Medina sds.	8317	-	8442																					
White Medina sds.	8359	-	8450																					
Whirlpool sds.	8484	-	8480																					
Queensston	8462	-																						
TD.	8470	-																						

90%+
 salt { 6718 - 6832 } 7210 - 7227
 { 6847 - 6874 } = 80% salt

5823	6048	6132
639	639	639
5184	5409	5493