

COAL OWNED BY Ewing B. Pollock, Manor Real Est. Co.
Monongalia Improvement Co.

- NEW LOCATION
- RECONDITION
- DRILL DEEPER
- ABANDONMENT

"I, the undersigned, hereby certify that this map is correct to the best of my knowledge and belief and shows all the information required by paragraph 6 of the rules and regulations of the oil and gas section of the mining laws of West Virginia."
Minimum degree of accuracy is one part in _____

Signed Jake C. Snyder Pg. 7842 E

Columbia Gas Transmission Corp.

COMPANY The Monongalia Improvement Co.

ADDRESS 800 Union Trust Bldg, Pittsburgh, Pa. 15219

FARM John Crow

MAP Q-25/10 ACRES 330 LEASE NO. L-2900

WELL (FARM) NO. _____ SERIAL NO. L-4851

ELEVATION (SPIRIT LEVEL) 1225.26'

QUADRANGLE Cameron, W. Va. - Pa. - O. NE

COUNTY Marshall DISTRICT Webster

POINT OF PROVEN ELEVATION BM A125 1957 Disk SW corner of yard of Mt. Hope Methodist Church

FILE NO. _____ DRAWING NO. Y-28-782

DATE 14 Oct. 1970 SCALE 1" = 800'

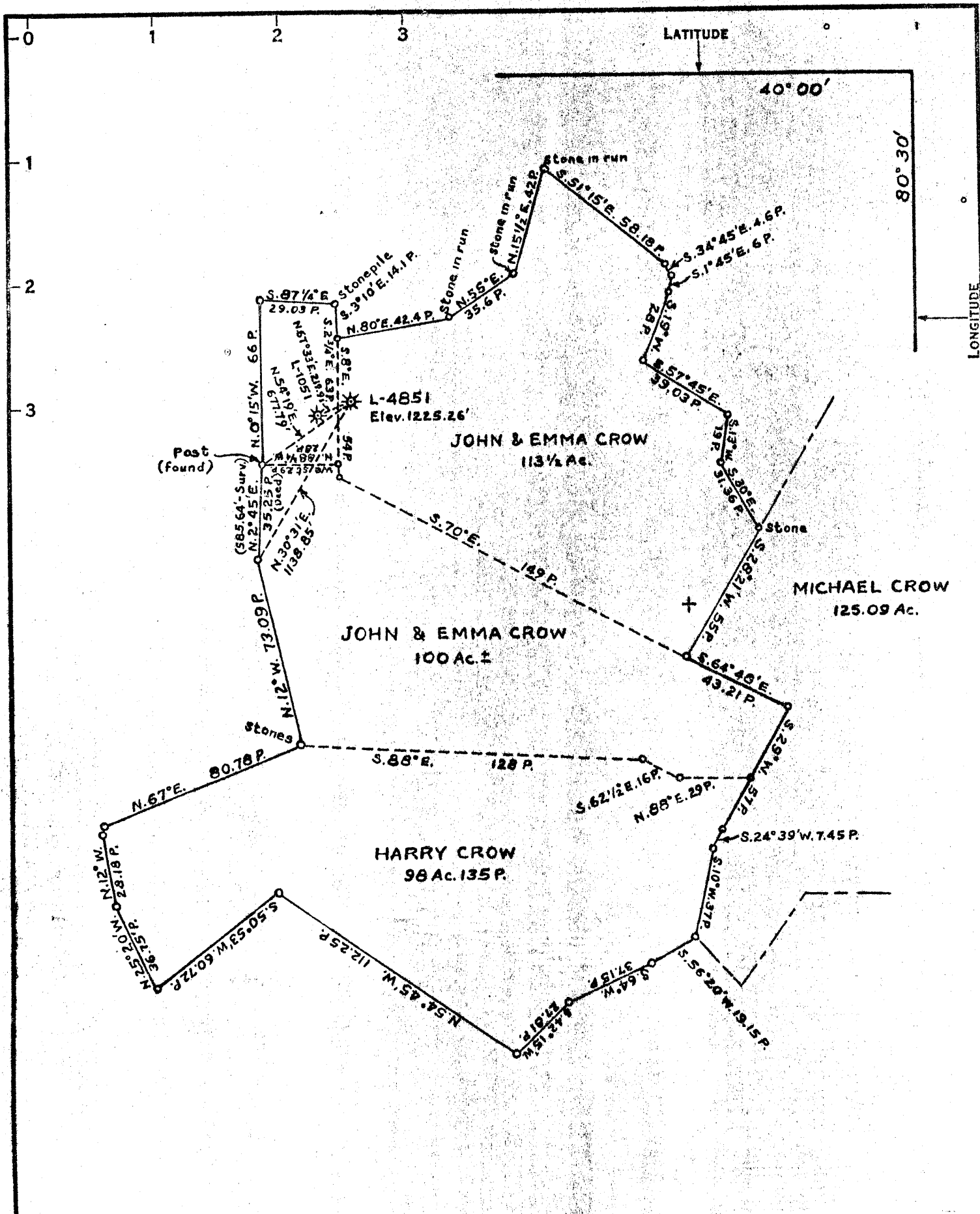
STATE OF WEST VIRGINIA
DEPARTMENT OF MINES
OIL AND GAS DIVISION
CHARLESTON

WELL LOCATION MAP

FILE NO. 77-100-549
Re-issued as Map 549

+ DENOTES LOCATION OF WELL ON UNITED STATES TOPOGRAPHIC MAPS, SCALE 1 TO 62,500, LATITUDE AND LONGITUDE LINES BEING REPRESENTED BY BORDER LINES AS SHOWN.

- DENOTES ONE INCH SPACES ON BORDER LINE OF ORIGINAL TRACING.



COAL OWNED BY Ewing B. Pollock, Manor Real Est. Co.
Monongalia Improvement Co.

- NEW LOCATION
- RECONDITION
- DRILL DEEPER
- ABANDONMENT

"I, the undersigned, hereby certify that this map is correct to the best of my knowledge and belief and shows all the information required by paragraph 6 of the rules and regulations of the oil and gas section of the mining laws of West Virginia."
 Minimum degree of accuracy is one part in _____

Signed J. B. Pollock

COMPANY The Manufacturers Light & Heat Co.
 ADDRESS 800 Union Trust Bldg., Pittsburgh, Pa. 15219
 FARM John Crow
 MAP O-25/10 ACRES 330 LEASE NO. L-2900
 WELL (FARM) NO. _____ SERIAL NO. L-4851
 ELEVATION (SPIRIT LEVEL) 1225.26'
 QUADRANGLE Cameron, W.Va.-Pa.-@ NE
 COUNTY Marshall DISTRICT Webster
 POINT OF PROVEN ELEVATION BM 1125 1957 Disk SW
corner of yard of Mt. Hope Methodist Church
 FILE NO. _____ DRAWING NO. Y-23-782
 DATE 14 Oct. 1970 SCALE 1" = 800'

STATE OF WEST VIRGINIA
 DEPARTMENT OF MINES
 OIL AND GAS DIVISION
 CHARLESTON
 WELL LOCATION MAP

FILE NO. Mar-542
NOW 549

+ DENOTES LOCATION OF WELL ON UNITED STATES TOPOGRAPHIC MAPS, SCALE 1 TO 62,500, LATITUDE AND LONGITUDE LINES BEING REPRESENTED BY BORDER LINES AS KNOWN.

- DENOTES ONE INCH SPACES ON BORDER LINE OF ORIGINAL PLACED

40-00
3-44



RECEIVED

NOV 22 1971

STATE OF WEST VIRGINIA
DEPARTMENT OF MINES
OIL AND GAS WELLS DIVISION

Rotary
Spudder
Cable Tools
Storage C. NO. 11

Cameron
Quadrangle (Majorsville)

WELL RECORD

Oil or Gas Well Gas (KIND)

Permit No. MARS - 549

Company Columbia Gas Transmission Corporation
Address 880 Union Trust Bldg., Pitts. Pa.
Farm John Crow Acres 330
Location (waters) _____
Well No. L-4851 Elev. 1225.26'
District Webster County Marshall
The surface of tract is owned in fee by _____
Address _____
Mineral rights are owned by _____
Address _____
Drilling commenced 9-27-71
Drilling completed 10-28-71
Date Shot _____ From _____ To _____

Casing and Tubing	Used in Drilling	Left in Well	Packers
Size			Kind of Packer
16	-	-	-
13	-	-	Size of
10	-	-	-
8 1/4	894'	894'	Depth set
6 3/4	1415'	1415'	-
5 3/16	-	-	Perf. top
4 1/2	-	-	-
3	-	-	Perf. bottom
2	-	-	-
Liners Used	-	-	Perf. top
			Perf. bottom

Open Flow 18 /10ths Water in _____ Inch
4 1/2 /10ths Merc. in _____ Inch
Volume 2,590,000 Cu. Ft.
Rock Pressure 485 lbs. 68 hrs.
Oil None bbls., 1st 24 hrs.
WELL ACIDIZED (DETAILS) No
WELL FRACTURED (DETAILS) No

Attach copy of cementing record.
CASING CEMENTED 8 5/8" SIZE 894 No. Ft. 10-8-71 Date
Amount of cement used (bags) 150
Name of Service Co. Halliburton Services
COAL WAS ENCOUNTERED AT 676 FEET _____ INCHES
_____ FEET _____ INCHES _____ FEET _____ INCHES
_____ FEET _____ INCHES _____ FEET _____ INCHES

RESULT AFTER TREATMENT (Initial open Flow or bbls.) _____
ROCK PRESSURE AFTER TREATMENT _____ HOURS _____
Fresh Water 52 Feet
Producing Sand 1st Salt Sand & 3rd Salt Sand Salt Water 1469 Feet
Depth 1434' & 1555'

2,590 Mcf

Formation	Color	Hard or Soft	Top	Bottom	Oil, Gas or Water	Depth	Remarks
Clay			0'	8'			
Lime			8'	11'			
Clay			11'	15'			
Lime			15'	22'			
Shale			22'	45'			
Lime			45'	53'	Water	52'	1 1/2 bailers P/hr
Slate			53'	60'			
Sand			60'	97'			
Slate			97'	120'			
Red Rock			120'	124'			
Slate			124'	153'			
Lime, Shells, & Slate			153'	195'			
Lime - Hard			195'	210'			
Slate & Shells			210'	247'			
Sand			247'	252'			
Slate & Shells			252'	278'			
Coal			278'	280'			
Lime			280'	304'			
Slate & Shells			304'	370'			
Lime - Hard			370'	378'			
Slate & Shells			378'	401'			
Lime			401'	417'			
Slate & Shells			417'	432'			
Red Rock			432'	437'			
Slate & Shells			437'	445'			
Lime			445'	567'			
Slate			567'	574'			
Lime			574'	576'			
Slate & Shells			576'	585'			

Formation	Color	Hard or Soft	Top 5	Bottom	Oil, Gas or Water	Depth Found	Remarks
Lime			585'	625'			
Slate & Shells			625'	676'			
Pittsburgh Coal			676'	681'	Water	676'	1 1/2 bailers
Slate			681'	686'			
Lime - Gritty			686'	695'			
Slate			695'	705'			
Lime			705'	715'			
Slate & Shells			715'	722'			
Red Rock			722'	737'			
Slate & Shells			737'	785'			
Red Rock			785'	790'			
Slate & Shells			790'	841'			
Red Rock			841'	848'			
Slate			848'	858'			
Lime			858'	904'			8 5/8" casing set at 894' and cemented through the Pitts. Coal
			904'	935'			
Slate & Shells			935'	954'			
Red Rock			954'	982'			
Slate & Shells			982'	1035'			
Lime			1035'	1037'	Water		
Coal			1037'	1048'			
Slate & Shells			1048'	1053'			
Red Rock			1053'	1064'			
Lime			1064'	1096'			
Slate & Shells			1096'	1178'			
Lime			1178'	1305'			
Slate & Shells			1305'	1325'			
Lime			1325'	1327'			
Slate			1327'	1329'			
Coal			1329'	1335'			
Slate			1335'	1370'			
Sand			1370'	1373'			
Coal			1373'	1378'			
Sand			1378'	1395'			
Slate	Black		1395'	1422'			6 5/8" casing set at 1415'
Slate	Gray						
			1422'	1428'			
Sand			1428'	1434'			
Slate			1434'	1500'			Top of sand at 1431' - Steel Line Measure. Gas pay from 1440' to 1442'. Open Flow 62,810 mcf/day.
<u>1st Salt Sand</u>							
					Water	1469'	
			1500'	1510'			
Lime			1510'	1555'			Gas pay from 1621' - 1623'.
Slate			1555'	1627'			Rock Pressure after 68 hours 485 psig. Open Flow = 2,590 mcf/day. After being shut-in for the initial rock pressure test, the well was blown for 4 1/2 hours and there was no indication of water
<u>3rd Salt Sand</u>							
				1627'			
<u>TOTAL DEPTH</u>							

Date _____, 19____

APPROVED RAS _____, Owner

By _____ (Title)