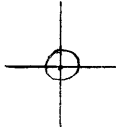


LATITUDE 39° 52' 30"

LONGITUDE 90° 05' 00"



7.5 OGIS topo location

7.5' loc 2035 ✓ 15' loc \_\_\_\_\_  
                        1.98W                     (calc.) \_\_\_\_\_

Company \_\_\_\_\_

Farm \_\_\_\_\_

Quad CAMERON 7 1/2'

County MARSHALL

District CAMERON

WELL LOCATION MAP

File No. 051 - 1569

(024)

COMPANY COLUMBIA GAS TRANSMISSION CORPORATION

MAP NO. \_\_\_\_\_

FARM Bertha Lilley

WELL NO. 601508

DISTRICT Cameron

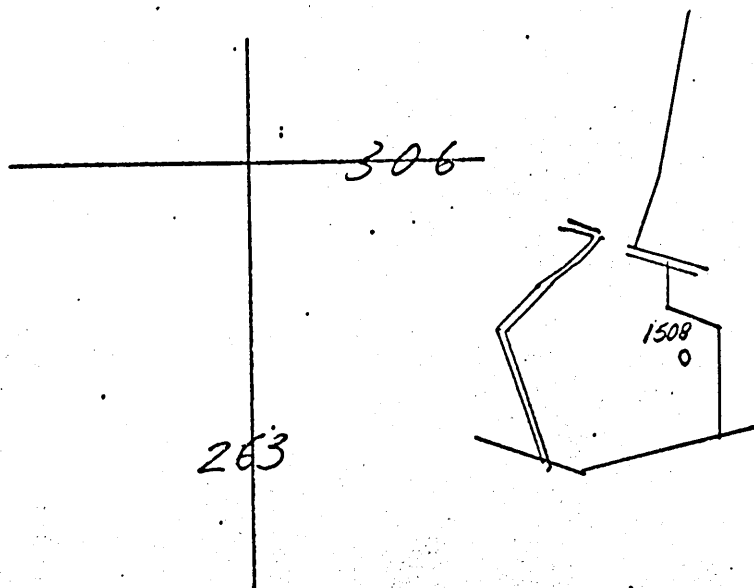
COUNTY Marshall

STATE WV

SCALE: 1" = 1320'

LONG. \_\_\_\_\_

LAT. \_\_\_\_\_



MSH-569

# The Manufacturers Light and Heat Co.

Farmers Bank Building, Pittsburgh, Penna.

Division: *Cameron*  
 Record of Well No. *1-1508*  
 Field: *Cameron* County: *W. Marshall* State: *W. Va.*  
 Farm: *180*  
 Rig commenced: *April 11<sup>th</sup>* 19*12* Completed: *May 29* 19*12*  
 Drilling commenced: *June 8* 19*12* Completed: *July 20* 19*12*  
 Cost per foot: *\$1.15*  
 Contractor: *W. Frank T. Burns* Address: *Washington, D.C.*  
 Drillers' names: *W. Reed, W. Richards, C. Ernest, C. Bryan*

BOILER			ENGINE			RIG			
H. P.	No.	Name of Maker	H. P.	No.	Name of Maker	New	Old	Height	Name of Builder
						new		82	J. R. Gilmore

CONDUCTOR AND CASING USED IN DRILLING									
Conductor	13 inch	10 inch	8 1/2 inch	6 1/2 inch	6 inch	5 1/2 inch	5 1/4 inch	5 inch	4 inch
14		140	1185	1845					

CONDUCTOR AND CASING LEFT IN WELL									
Conductor	13 inch	10 inch	8 1/2 inch	6 1/2 inch	6 inch	5 1/2 inch	5 1/4 inch	5 inch	4 inch
14			1185	1845				2769.5	3

OIL WELL				GAS WELL						
When Shot	Size of Torpedo	1st Day's Production	Tubing	Rods	Tanks	Size of Packer	Depth Set	Packed With	1st Minute's Pressure	Rock Press.
						6 3/8 x 4"	2688.07	4"	95	38

FORMATION	Top		Thickness	REMARKS
	Bottom	Thickness		
<i>Waynesburg Coal</i>	415	420	5	Hole full of water 45 feet. Gas in Salt Sand 1615 feet. Gas in Big Linton 1956 feet. Gas in Hillfoot 2658 feet. Gas in Golden Sine 2706 feet. Well tubed July 21-1912 with 4" Liberty 10 Thread 79.08 ft. anchor 4 joints 2690.00 ft. above packer 131" 2769.05 ft. Total 135 joints Well packed in soft sand at 266 with 1-6 3/8 x 4" Larkin Packer 3rd joint Perforated & used as a packer on top of 4th joint shut in July 22 1912 at 2306
<i>Waynesburg Coal</i>	595	600	5	
<i>Pittsburg Coal</i>	700	705	5	
<i>Waynesburg Sand</i>	790	820	30	
<i>Little Linton</i>	1075	1125	50	
<i>Big Linton</i>	1172	1230	58	
<i>Sand</i>	1360	1415	55	
<i>Gas Sand</i>	1460	1515	55	
<i>Salt Sand</i>	1612	1730	118	
<i>Little Sine</i>	1750	1760	10	
<i>Pencil Coal</i>	1760	1765	5	
<i>Big Sine</i>	1765	1863	98	
<i>Big Linton</i>	1863	2100	237	
<i>Hillfoot</i>	2445	2480	35	
<i>Hillfoot</i>	2655	2693	38	
<i>Golden Sine</i>	2704	2744	40	
<i>Total Depth</i>	2748			