

LATITUDE 39° 50' 00"

00.03.08 LONGITUDE



7'5 OGIS topo location

7.5' loc 2.175 ✓ 15' loc _____
 1.30w (calc.) _____

Company _____

Farm _____

Quad CAMERON 7 1/2'

County MARSHALL

District LIBERTY

WELL LOCATION MAP

File No. Q51-577

(024)

Latitude

Longitude

2.165
1.29w

Topo Location

7.5' Loc. _____ 15' Loc. _____
 _____ (calc.) _____

Company Manufact Lt+Ht
Farm Ernest Wendt # 2956
15' Quad _____
 (sec.)
7.5' Quad Cameron
District Liberty

WELL LOCATION PLAT

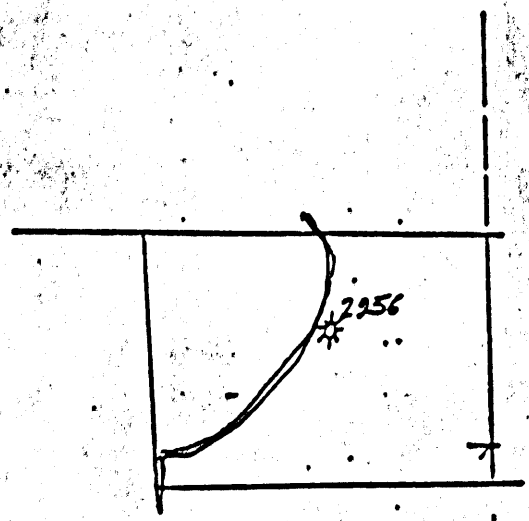
County OSI **Permit** 70159

COMPANY COLUMBIA GAS TRANSMISSION CORPORATION MAP NO. Cameron

FARM Ernest Wendt WELL NO. 602956

DISTRICT Liberty COUNTY Marshall STATE WV

SCALE: 1" = 1320' LONG. 80°31'27" LAT. 39°48'12"



WV
Tenn

Altop
Springhill

MSH-577

Division _____ Company _____
 Record of well No. 2956 on _____ Farm _____ Acres _____
 Field _____ District _____ County _____ State _____
 Rig Commenced 19 _____ Completed 19 _____
 Drilling Commenced 19 _____ Completed 19 _____
 Contractor _____ Address _____
 Driller's Name _____

CASING AND TUBING RECORD

Conductor	1 1/2"	1 3/4"	2"	2 1/2"	3"	3 1/2"	4"	4 1/2"
Used in Drilling								
Left in Well								

PACKER RECORD			SHOOTING RECORD						
Size	Depth Set	Type Packer	Date	Type Explosive	Amount	DEPTH		Volume Before Co. Fl.	Volume After Co. Fl.
						Top	Bottom		

VOLUME AND PRESSURE

Date	Reading in Inches	Liquid	Size Orifice	Volume	Sand	PRESSURE IN MIN.					24 Hour R. P.	Max. R. P.	Mo	
						1	5	10	20	30				

TOTAL INITIAL OPEN FLOW _____ CUBIC FEET PER 24 HOURS _____

FORMATION	TOP	BOTTOM	THICKNESS	REMARKS		
Clay brown soft	0	12	12	Slate dark soft	1515	1550
Sand, dark hard	12	25	13	Slate dark soft	1590	1615
Soap stone dark soft	25	100	75	Slate light soft	1680	1790
Lime dark broken	100	200	100	Slate dark soft	1830	1928
Red Rock red soft	200	250	50	Slate dark soft	2040	2090
Lime light hard	250	300	50	Slate dark soft	2140	2160
Slate light soft	300	400	100	Lime light hard	2160	2200
Lime light broken	400	500	100	Slate dark soft	2200	2210
Slate light soft	500	600	100	Lime shells light broken	2550	2600
Lime light hard	600	650	50	Slate light soft	2600	2675
Slate dark soft	650	700	50	Lime & Slate light soft	2675	2880
Lime dark broken	700	785	85	Slate dark soft	2880	2900
Bluff Sand dark hard	785	810	25	Slate light soft	2945	2960
Lime light hard	915	1015	100	Lime light hard	2960	2970
Mapletown coal black soft	1015	1020	5	Slate dark soft	2970	3005
Lime light hard	1020	1050	30	Pink Rock pink soft	3005	3015
Slate light soft	1050	1070	20	Lime light hard	3015	3020
Lime light hard	1070	1090	20	Slate light soft	3020	3035
Slate dark soft	1090	1115	25	Lime light hard	3035	3045
Lime light hard	1122	1150	28	Slate light soft	3045	3085
Slate light soft	1150	1200	50	Slate light soft	3124	3149
Red Rock red soft	1200	1250	50	Pink Rock Pink soft	3145	3157
Slate light soft	1250	1335	85	Slate light soft	3201	3219
Red Rock red soft	1350	1375	25	Slate light soft	3227	3252
Sand light hard	1375	1425	50			
Sand light hard	1425	1450	25			
Slate light soft	1450	1495	45			
Sand light hard	1495	1515	20			

MSH-577

Examined above information and measurements and found to be correct by _____
 Contractor _____ Examined and Approved by _____
 Field Superintendent _____

NOTE:—The above blank must be filled out carefully by the contractor, with a complete and accurate record of the well, and accompany, when presented for payment of the bill. All formations and known sands to be given by their proper name, with steel line measurements, and under the head of "Remarks" must be recorded in what sand or what depth Gas or Water was found, the quantity of same, the quality of the rock, and thickness of bed.

Record of Well No. *2956* on *Earnest Hendt* Farm *218* Acres
Cameron Field *Liberty* Township *Marshall* County *W. Va* State
 Rig Commenced *Sept 12* 1924. Completed *Sept 19* 1924
 Drilling Commenced *Nov 12* 1924. Completed *Dec 19* 1924
 Cost per Foot *\$1.50* Contractor *Nelson M Richard* Address *Hoodruff, W. Va*
 Driller's Names *N M Richard, Porter Richard, Art Headley, Mont Hood*

BOILER			ENGINE			RIG			
H. P.	No.	Name of Maker	H. P.	No.	Name of Maker	New	Old	Height	Name of Builder
						X		82'	<i>Richardson & Fisher</i>

CONDUCTOR AND CASING USED IN DRILLING									
Conductor	12 inch	16 inch	8 1/2 inch	6 1/2 inch	6 inch	5 1/2 inch	5 inch	4 inch	3 inch
<i>12</i>		<i>237</i>	<i>1552</i>	<i>2264</i>					

CONDUCTOR AND CASING LEFT IN WELL									
Conductor	12 inch	16 inch	8 1/2 inch	6 1/2 inch	6 inch	5 1/2 inch	5 inch	4 inch	3 inch
<i>12</i>			<i>1552</i>	<i>2264</i>					

OIL WELL			GAS WELL							
When Set	Size of Torpedo	1st Day's Production	Tubing	Bois	Tanks	Size of Packer	Depth Set	Packed with	1st Minute Pressure	Rest Pressure
FORMATION			Top	Bottom	Thickness	REMARKS				

<i>Haysburg Coal</i>			<i>310</i>	<i>815</i>	<i>5</i>	<i>black soft</i>				
<i>Pittsburgh</i>			<i>1115</i>	<i>1122</i>	<i>7</i>	<i>black soft</i>				
<i>Murphy Sand</i>			<i>1335</i>	<i>1350</i>	<i>15</i>	<i>light hard</i>				
<i>Little Dunkard</i>			<i>1550</i>	<i>1580</i>	<i>30</i>	<i>light hard</i>				
<i>Big Dunkard</i>			<i>1615</i>	<i>1630</i>	<i>15</i>	<i>light hard</i>				
<i>Gas Sand</i>			<i>1790</i>	<i>1830</i>	<i>40</i>	<i>light hard</i>				
<i>1st Salt Sand</i>			<i>1900</i>	<i>2040</i>	<i>140</i>	<i>light hard</i>				
<i>2nd</i>			<i>2090</i>	<i>3110</i>	<i>1010</i>	<i>light hard</i>				
<i>Big Limestone</i>			<i>2210</i>	<i>2276</i>	<i>66</i>	<i>light hard</i>				
<i>Big Inyan limestone</i>			<i>2276</i>	<i>2550</i>	<i>274</i>	<i>Little Gas 30' in Inyan</i>				
<i>Thirty-foot sand</i>			<i>2900</i>	<i>2910</i>	<i>10</i>	<i>light hard</i>				
<i>Fifty-foot</i>			<i>3085</i>	<i>3124</i>	<i>39</i>	<i>light hard</i>				
<i>Gordon Stray</i>			<i>3149</i>	<i>3156</i>	<i>7</i>	<i>light hard</i>				
<i>Gordon Sand</i>			<i>3157</i>	<i>3201</i>	<i>44</i>	<i>light hard</i>				
<i>Fourth Sand</i>			<i>3319</i>	<i>3327</i>	<i>8</i>	<i>Gas at 3201' light hard</i>				
<i>Fifth</i>			<i>3352</i>	<i>3354</i>	<i>2</i>	<i>light broken</i>				
<i>Total Depth</i>				<i>3354</i>		<i>5 1/2 inch</i>				

ERNEST WENDT NO. 2956 WELL.

Liberty District, Marshall County, W. Va.
By Manufacturers Light & Heat Co.
Completed Dec. 19, 1924.
Record from Mr. Schillbalm Sept. 30, 1939.

	Top.	Bottom.
Pittsburgh Coal	1115	- 1122
Murphy Sand	1335	- 1350
Little Dunkard Sand	1550	- 1580
Big Dunkard Sand	1615	- 1680
Gas Sand	1790	- 1830
1st Salt Sand	1928	- 2040
2nd Salt Sand	2090	- 2140
Big Lime	2210	- 2276
Big Injun Sand (little gas 30' in B.I.)	2276	- 2550
30-Foot Sand	2900	- 2945
50-Foot Sand gas	3085	- 3124
Gordon Sand (Stray)	3149	- 3156
Gordon Sand	3157	- 3201
4th Sand (gas, 3221')	3219	- 3227
5th Sand	3252	- 3254
Total depth		3254