

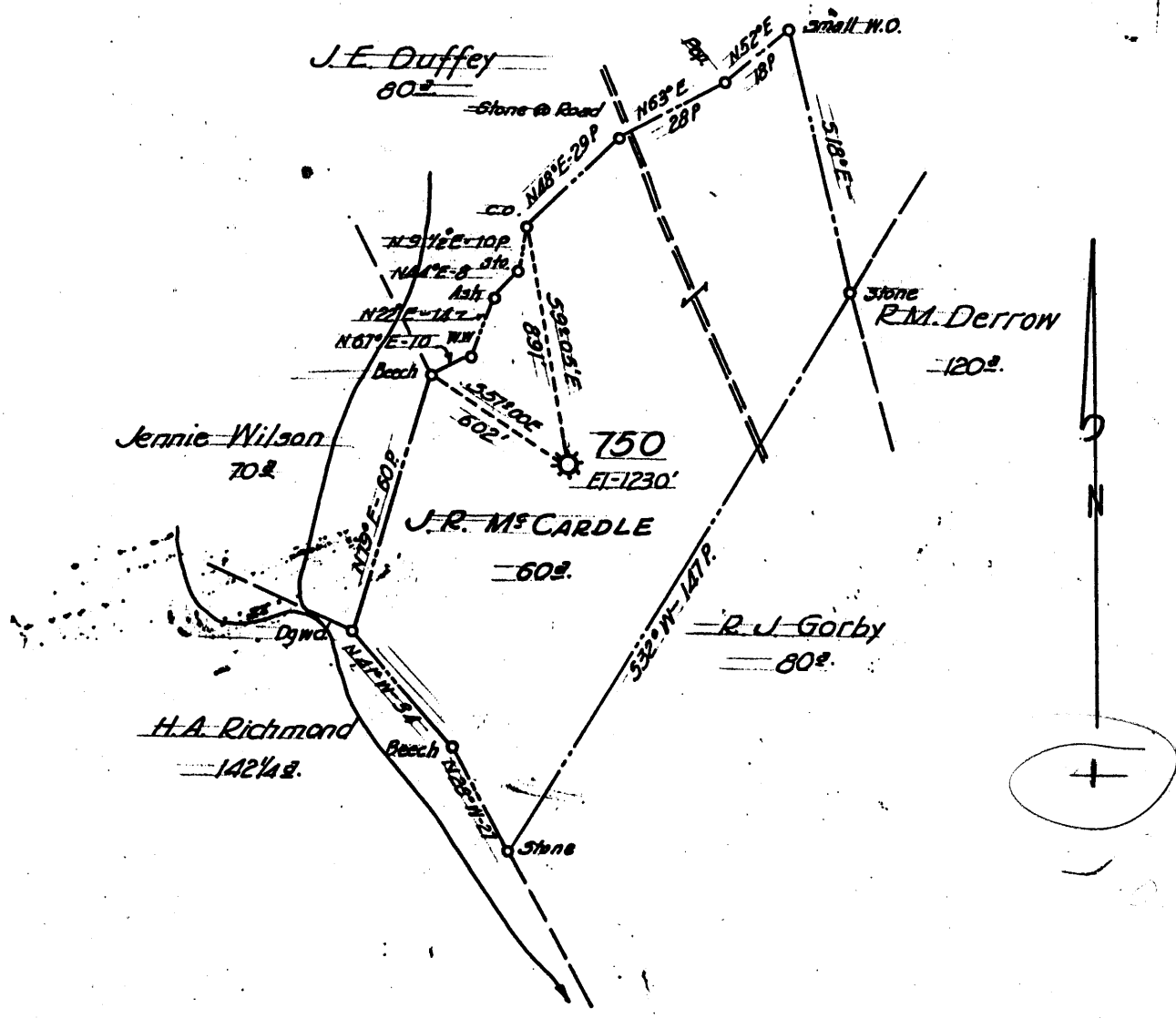
Latitude 39° 50'

RECEIVED

SEPT 17 91

Division of Energy  
Oil and Gas Section

Longitude 80° 40'



2.565  
0.40W

New Location   
Drill Deeper   
Abandonment

FORMERLY H.N.G.CO. WELL No 750

Company A.M. SNIDER 375<sup>00</sup>  
 Address HUNDRED, W. VA.  
 Farm J.R. McCARDLE  
 Tract \_\_\_\_\_ Acres 60 Lease No. \_\_\_\_\_  
 Well (Farm) No. \_\_\_\_\_ Serial No. 750  
 Elevation (Spirit Level) 1230' cameron SW  
 Quadrangle CAMERON Green Garden 7.5  
 County MARSHALL District MEADE  
 Engineer HENRY A. HAIN  
 Engineer's Registration No. 3150  
 File No. A.M.S 17-60 Drawing No. \_\_\_\_\_  
 Date \_\_\_\_\_ Scale 1" = 40 FEET

STATE OF WEST VIRGINIA  
DEPARTMENT OF MINES  
OIL AND GAS DIVISION  
CHARLESTON

WELL LOCATION MAP

FILE NO. 051-0732

+ Denotes location of well on United States Topographic Maps, scale 1 to 62,500, latitude and longitude lines being represented by border lines as shown.

- Denotes one inch spaces on border line of original tracing.

MAR 18 1992

Heade District, Marshall County, W. Va.  
 By Hope Natural Gas Co.  
 Elevation, 1220' A.  
 Record from C. G. Reed, Oct. 5, 1933.

051 732

	Top.	Bottom.
Conductor	0	16
(Water at 150')		
Native coal	560	565
Mapletown (Sewickley) Coal	820	825
Pittsburgh Coal	912	918
Little Dunkard Sand	1232	1255
Big Dunkard Sand	1330	1350
Salt Sand (water, 1712')	1647	1870
Huxton Sand	1920	1935
Pencil Cave	1985	1992
Big Lane	1992	2042
Big Injun Sand	2042	2250
Stray Sand	2880	2885
Gordon Sand (gas, 2913')	2907	2926
Slate	2926	2931
Lime and shell	2931	2940
Slate	2940	2946
Shell	2946	2955
Slate	2955	2962
Shell	2962	2967
Slate	2967	2973
Total depth		2973