

0 1 2 3 LATITUDE 39 ° 45 ' 1

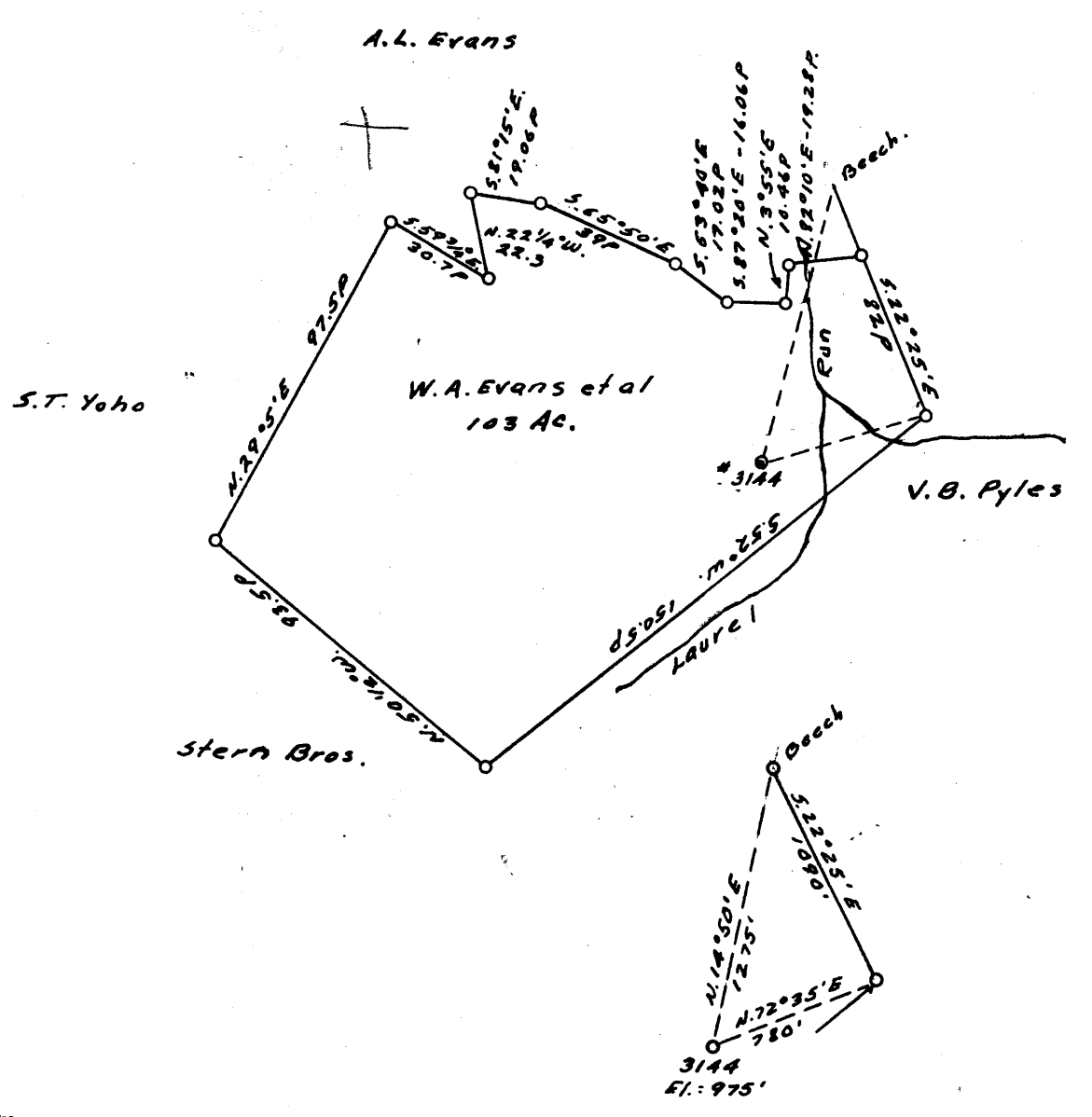
-1

-2

-3

LONGITUDE 80 ° 35 ' 1

plot



18260

COAL OWNED BY \_\_\_\_\_  
*Storage*

NEW LOCATION...

DRILL DEEPER...

ABANDONMENT...  PARTIAL

COMPANY The Manufacturers Light & Heat Co.

ADDRESS 800 Union Trust Bldg. Pgh. Pa.

FARM W. A. Evans

TRACT \_\_\_\_\_ ACRES 103 LEASE NO. 12379

WELL (FARM) NO. 1 SERIAL NO. 3144

ELEVATION (SPIRIT LEVEL) 975'

QUADRANGLE Littleton

COUNTY Marshall DISTRICT Liberty

ENGINEER Thomas. E. Virgin. J.M.

ENGINEER'S REGISTRATION NO. 1503

FILE NO. \_\_\_\_\_ DRAWING No. Y-13-980

DATE 28 Apr. 1954 SCALE 1" = 800'

STATE OF WEST VIRGINIA  
 DEPARTMENT OF MINES  
 OIL AND GAS DIVISION  
 CHARLESTON

WELL LOCATION MAP

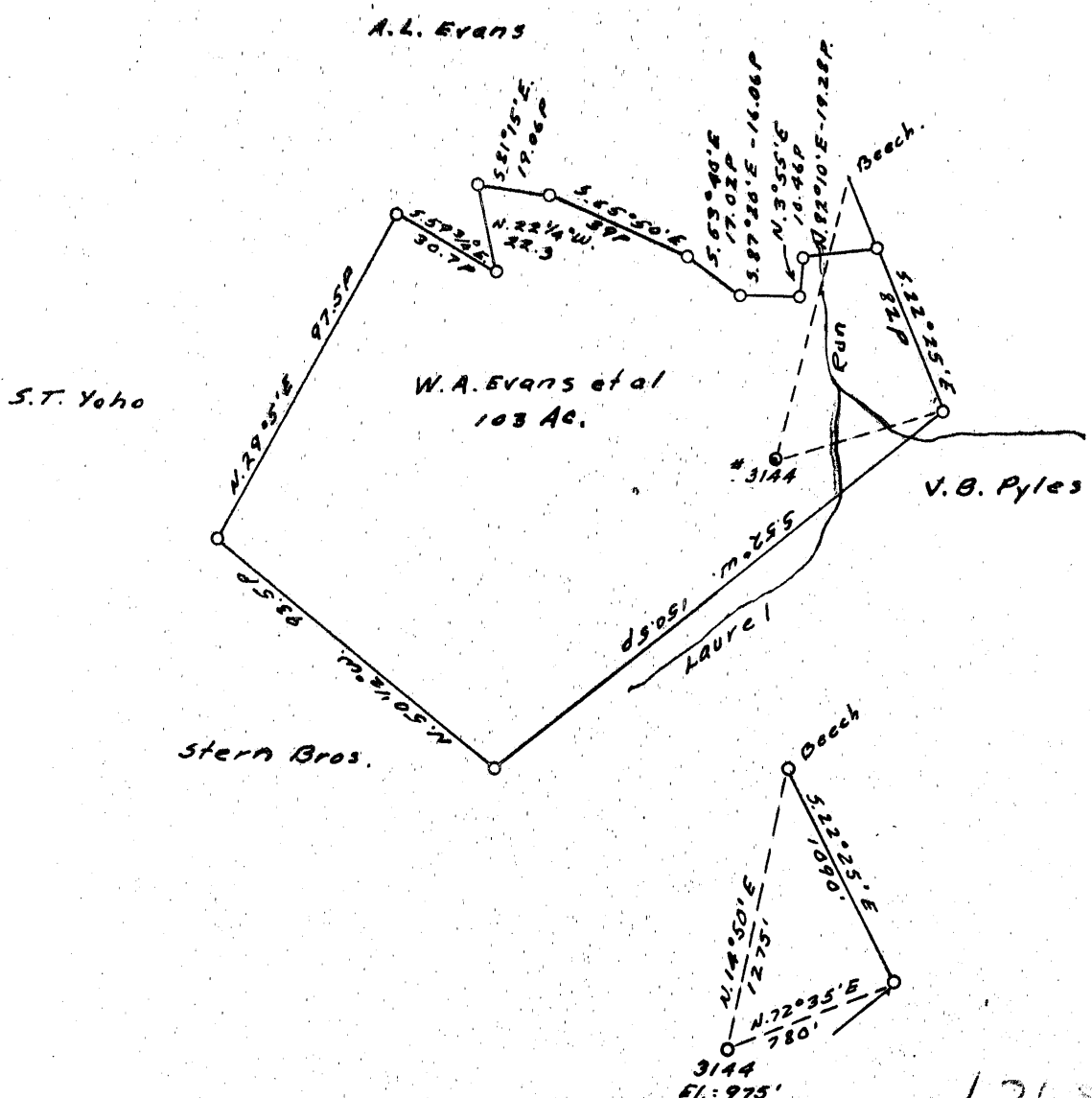
FILE No. MARS-368A-PP

See: 051-0761-T

+ DENOTES LOCATION OF WELL ON UNITED STATES TOPOGRAPHIC MAPS, SCALE 1 TO 62,500, LATITUDE AND LONGITUDE LINES BEING REPRESENTED BY BORDER LINES AS SHOWN.

- DENOTES ONE INCH SPACES ON BORDER LINE OF ORIGINAL TRACING.

0 1 2 3 LATITUDE 39 ° 45 ' 1  
 -1  
 -2  
 -3 LONGITUDE 80 ° 35 ' 1



1.368  
1.80W

COAL OWNED BY \_\_\_\_\_  
 Storage  
 NEW LOCATION...   
 DRILL DEEPER...   
 ABANDONMENT...  PARTIAL

COMPANY The Manufacturers Light & Heat Co.  
 ADDRESS 800 Union Trust Bldg. Pgh. Pa.  
 FARM W. A. Evans  
 TRACT \_\_\_\_\_ ACRES 103 LEASE NO. 12379  
 WELL (FARM) NO. 1 SERIAL NO. 3144  
 ELEVATION (SPIRIT LEVEL) 975'  
 QUADRANGLE Littleton  
 COUNTY Marshall DISTRICT Liberty  
 ENGINEER Thomas. E. Vargin. J.M.  
 ENGINEER'S REGISTRATION NO. 1503  
 FILE NO. \_\_\_\_\_ DRAWING NO. V-13-980  
 DATE 28 Apr. 1954 SCALE 1" = 800'

STATE OF WEST VIRGINIA  
 DEPARTMENT OF MINES  
 OIL AND GAS DIVISION  
 CHARLESTON

WELL LOCATION MAP

FILE NO. MARS-368-A

new 761

+ DENOTES LOCATION OF WELL ON UNITED STATES TOPOGRAPHIC MAPS. SCALE 1 TO 62,500. LATITUDE AND LONGITUDE LINES BEING REPRESENTED BY BORDER LINES AS SHOWN.  
 - DENOTES ONE INCH SPACES ON BORDER LINE OF ORIGINAL TRACING.



STATE OF WEST VIRGINIA  
DEPARTMENT OF MINES  
OIL AND GAS DIVISION

419

Permit No. 3684 now 761

WELL RECORD

Oil or Gas Well \_\_\_\_\_ (KIND)

Company THE MANUFACTURERS LIGHT AND HEAT COMPANY  
Address 800 Union Trust Bldg., Pgh., Penna.  
Farm W. A. Evans Acres 103  
Location (waters) \_\_\_\_\_  
Well No. 3144 Elev. 975'  
District Liberty County Marshall  
The surface of tract is owned in fee by \_\_\_\_\_  
Address \_\_\_\_\_  
Mineral rights are owned by \_\_\_\_\_  
Address \_\_\_\_\_  
Drilling commenced December 20, 1926  
Drilling completed March 4, 1927  
Date Shot \_\_\_\_\_ From \_\_\_\_\_ To \_\_\_\_\_  
With \_\_\_\_\_

Casing and Tubing	Used in Drilling	Left in Well	Packers
Size			
16			Kind of Packer
13			
10	140	140	Size of
8 1/4	1127	1127	
6 1/2	1597	1597	Depth set
5 3/16	1805	1805	
3			Perf. top
2			Perf. bottom
Liners Used			Perf. top
			Perf. bottom

Open Flow \_\_\_\_\_ /10ths Water in \_\_\_\_\_ Inch  
\_\_\_\_\_ /10ths Merc. in \_\_\_\_\_ Inch  
Volume 602,000 Cu. Ft.  
Rock Pressure \_\_\_\_\_ lbs. \_\_\_\_\_ hrs.  
Oil \_\_\_\_\_ bbls., 1st 24 hrs.  
Fresh water \_\_\_\_\_ feet \_\_\_\_\_ feet  
Salt water \_\_\_\_\_ feet \_\_\_\_\_ feet

CASING CEMENTED \_\_\_\_\_ SIZE \_\_\_\_\_ No. Ft. \_\_\_\_\_ Date \_\_\_\_\_  
COAL WAS ENCOUNTERED AT 395 FEET \_\_\_\_\_ INCHES  
600 FEET \_\_\_\_\_ INCHES 700 FEET \_\_\_\_\_ INCHES  
\_\_\_\_\_ FEET \_\_\_\_\_ INCHES \_\_\_\_\_ FEET \_\_\_\_\_ INCHES

Formation	Color	Hard or Soft	Top	Bottom	Oil, Gas or Water	Depth Found	Remarks
Waynesburg Coal			395	400			
Mapletown Coal			600	605			
Pittsburgh Coal			700	707			
1st red rock below coal			830	860			
Big Dunkard			1235	1275			
Gas Sand			1350	1380			
Salt Sand			1590	1625	Hole full of water at 1590		
2nd Salt Sand			1700	1730			
Big Lime			1805	1865	More water at 1710, hole full		
Gas Injun			1865	2105	Gas 1893		
Berea			2235	2300	Gas 1932		
Red Rock above Gordon			2545	2585	35 ft. slate between two pays		
Gordon			2692	2713	Gas 2696 - 2700		
4th Sand			2760	2770			
Total Depth			2781				

