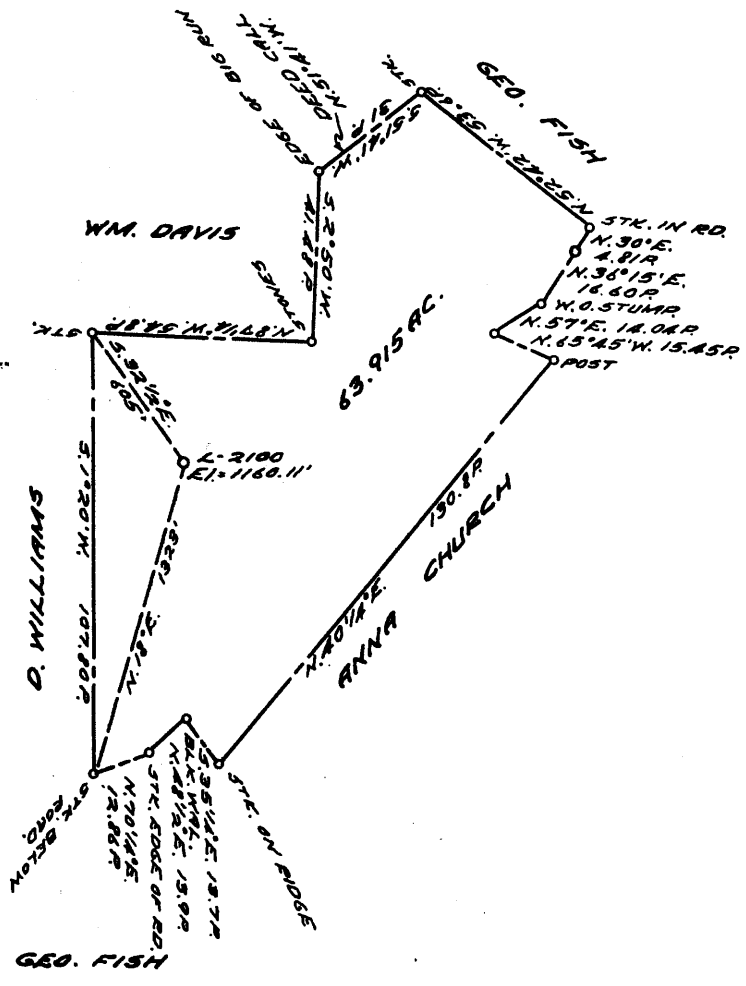


LATITUDE 39 ° 50 ' 1
39 4730

LONGITUDE 80 ° 35'

→ 7.5' loc
Kla
5/20/54



COAL OWNED BY _____
 PART. PLUG. & RECONDITION _____
 NEW LOCATION...
 DRILL DEEPER...
 ABANDONMENT...

0-25-29

COMPANY THE MANUFACTURERS LIGHT & HEAT
 ADDRESS 800 UNION TRUST BLDG. PGH. PA.
 FARM GEORGE FISH
 TRACT _____ ACRES 64 LEASE No. 4831
 WELL (FARM) No. 1 SERIAL No. 2100
 ELEVATION (SPIRIT LEVEL) 1160.11
 QUADRANGLE CAMERON
 COUNTY MARSHALL DISTRICT LIBERTY
 ENGINEER Thomas E. Virgin M.
 ENGINEER'S REGISTRATION No. 1504
 FILE No. _____ DRAWING No. Y-25-46
 DATE 30 NOV. 59 SCALE 1" = 800

STATE OF WEST VIRGINIA
 DEPARTMENT OF MINES
 OIL AND GAS DIVISION
 CHARLESTON

WELL LOCATION MAP

FILE No. MARS-408
PARTIAL PLUG

See: 051-0770-T

+ DENOTES LOCATION OF WELL ON UNITED STATES TOPOGRAPHIC MAPS; SCALE 1 TO 62,500. LATITUDE AND LONGITUDE LINES BEING REPRESENTED BY BORDER LINES AS SHOWN.

- DENOTES ONE INCH SPACES ON BORDER LINE OF ORIGINAL TRACING.

18268

39° 47' 30"

Latitude

80° 35' 00"

	.815
	.48w

Longitude

Topo Location

7.5' Loc. _____ 15' Loc. _____
 _____ (calc.) _____

Company Manufact H&HT

Farm IR Fish 2100

15' Quad _____
 (sec.)

7.5' Quad Cameron

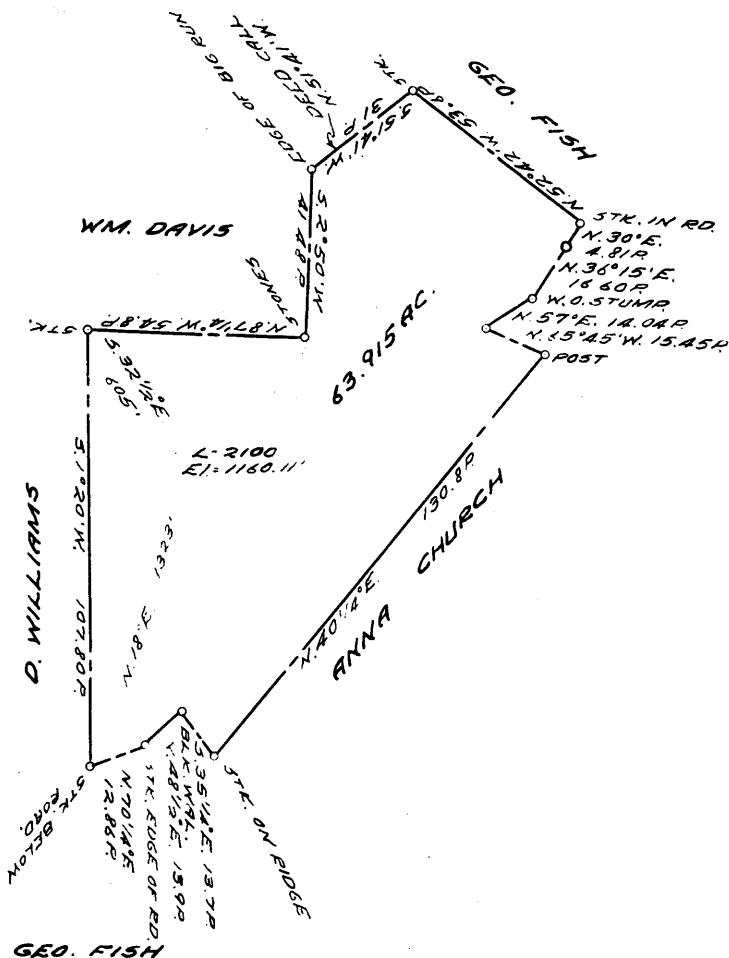
District Liberty

WELL LOCATION PLAT

County 051 **Permit** ~~70065~~
 Now
770

LATITUDE 39 ° 50 '

LONGITUDE 80 ° 35 '



3.71 S
0.50 W

COAL OWNED BY _____
 PART. PLUG & RECONDITION

NEW LOCATION...

DRILL DEEPER...

ABANDONMENT...

0-25-29

COMPANY THE MANUFACTURERS LIGHT & HEAT

ADDRESS 800 UNION TRUST BLDG. PGH. PA.

FARM GEORGE FISH

TRACT _____ ACRES 64 LEASE NO. 4831

WELL (FARM) NO. 1 SERIAL NO. 2100

ELEVATION (SPIRIT LEVEL) 1160.11

QUADRANGLE CAMERON

COUNTY MARSHALL DISTRICT LIBERTY

ENGINEER Thomas E. Virgin M.

ENGINEER'S REGISTRATION NO. 1504

FILE NO. _____ DRAWING NO. Y-25-46

DATE 30 NOV. 59 SCALE 1" = 800'

STATE OF WEST VIRGINIA
 DEPARTMENT OF MINES
 OIL AND GAS DIVISION
 CHARLESTON

WELL LOCATION MAP

FILE NO. MARS-408 → 990
PARTIAL PLUG

+ DENOTES LOCATION OF WELL ON UNITED STATES TOPOGRAPHIC MAPS, SCALE 1 TO 62,500. LATITUDE AND LONGITUDE LINES BEING REPRESENTED BY BORDER LINES AS SHOWN.

- DENOTES ONE INCH SPACES ON BORDER LINE OF ORIGINAL TRACING.

2 770

Liberty District, Marshall County, W. Va.
By Manufacturers Light & Heat Co.
Completed Feb. 10, 1919.
Record from Mr. Schillham Sept. 30, 1939.

	Top.	Bottom.
Pittsburgh Coal	838	- 846
(show gas, 1313')		
Maxton Sand	1865	- 1880
Little line	1880	- 1890
Big line (gas, 1896-1899')	1897	- 1962
Big Injun Sand	1962	- 2220
30-Foot Sand	2495	- 2545
50-Foot Sand	2683	- 2725
(some gas, 2757')		
(pay gas, 2815')		
Total depth		2829