

18276

COAL OWNED BY _____
 PART. PLUG. _____
 NEW LOCATION.....
 DRILL DEEPER.....
 ABANDONMENT.....

0-25-29

COMPANY THE MANUFACTURERS LIGHT & HEAT
 ADDRESS 800 UNION TRUST BLDG, PGM, PA.
 FARM J. P. REID
 TRACT _____ ACRES 92 LEASE No. 2221
 WELL (FARM) No. 1 SERIAL No. 2944
 ELEVATION (SPIRIT LEVEL) 1408'
 QUADRANGLE CAMERON 47.5
 COUNTY MARSHALL DISTRICT LIBERTY
 ENGINEER Thomas C. Virgin M.
 ENGINEER'S REGISTRATION No. 1503
 FILE No. _____ DRAWING No. V-25-276
 DATE 2 FEB. 61 SCALE 1" = 800'

STATE OF WEST VIRGINIA
 DEPARTMENT OF MINES
 OIL AND GAS DIVISION
 CHARLESTON

WELL LOCATION MAP

FILE No. MARS-432-A-PP

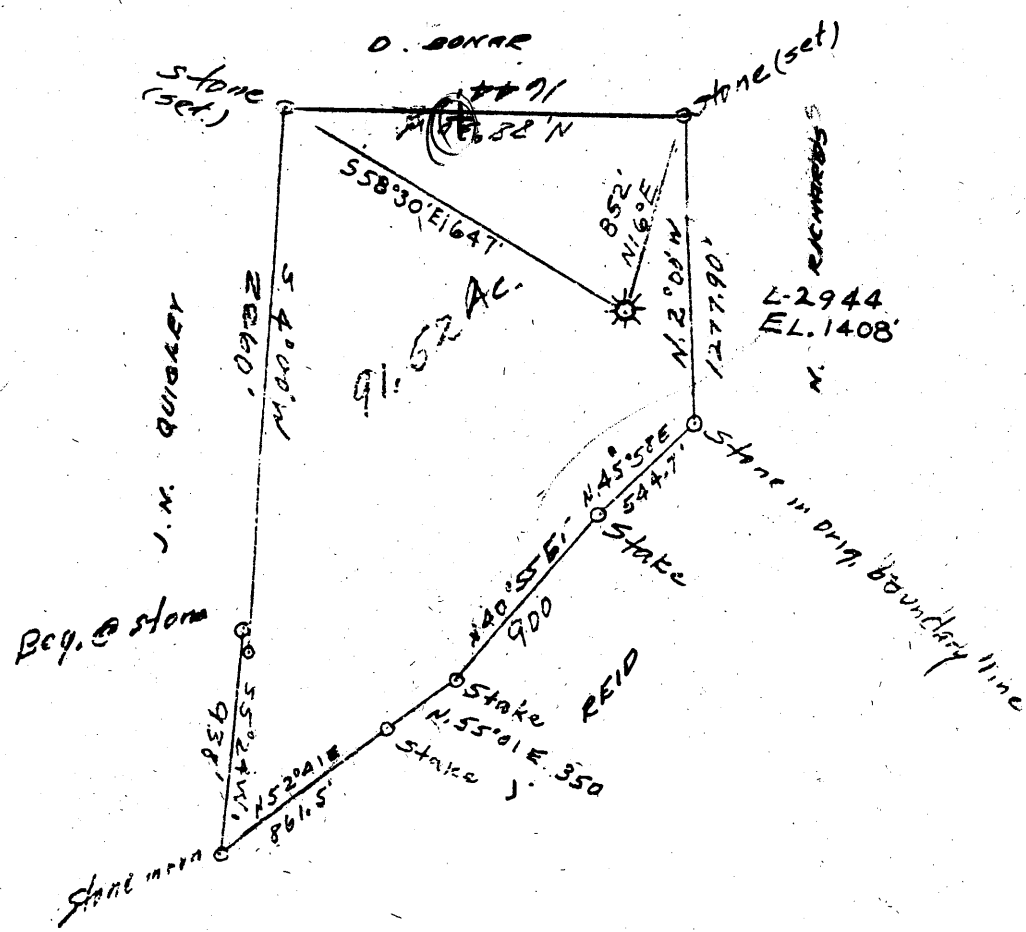
see: 051-0780-T

— DENOTES LOCATION OF WELL ON UNITED STATES TOPOGRAPHIC MAPS. SCALE 1 TO 62,500. LATITUDE AND LONGITUDE LINES BEING REPRESENTED BY BORDER LINES AS SHOWN.

— DENOTES ONE INCH SPACES ON BORDER LINE OF ORIGINAL TRACING.

LATITUDE 39 ° 50 ' 1

LONGITUDE 80 ° 30 ' 1



2.995
 3.82 W
 220
 162

299
 293
 8.9 W
 8.02

COAL OWNED BY _____
 PART. PLUG.
 NEW LOCATION.....
 DRILL DEEPER.....
 ABANDONMENT.....

MAR 5 1961

0-25-29

COMPANY THE MANUFACTURERS LIGHT & HEAT
 ADDRESS 800 UNION TRUST BLDG. PGM. PA.
 FARM J. P. REID
 TRACT _____ ACRES 92 LEASE No. 2221
 WELL (FARM) No. 1 SERIAL No. 2944
 ELEVATION (SPIRIT LEVEL) 1408'
 QUADRANGLE CAMERON
 COUNTY MARSHALL DISTRICT LIBERTY
 ENGINEER Thomas E. Virgin M.
 ENGINEER'S REGISTRATION No. 1503
 FILE No. _____ DRAWING No. Y-25-276
 DATE 2 FEB. 61 SCALE 1" = 800'

STATE OF WEST VIRGINIA
 DEPARTMENT OF MINES
 OIL AND GAS DIVISION
 CHARLESTON

WELL LOCATION MAP
 FILE No. MARS-432-A (partial)
4780

+ DENOTES LOCATION OF WELL ON UNITED STATES TOPOGRAPHIC MAPS. SCALE 1 TO 62,500. LATITUDE AND LONGITUDE LINES BEING REPRESENTED BY BORDER LINES AS SHOWN.
 - DENOTES ONE INCH SPACES ON BORDER LINE OF ORIGINAL TRACING.



448

STATE OF WEST VIRGINIA DEPARTMENT OF MINES OIL AND GAS DIVISION

WELL RECORD

Oil or Gas Well GAS (KIND)

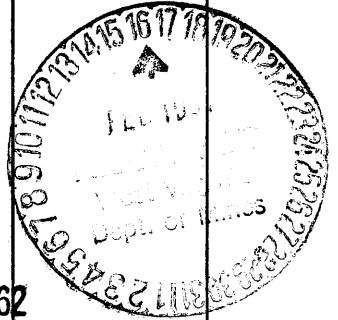
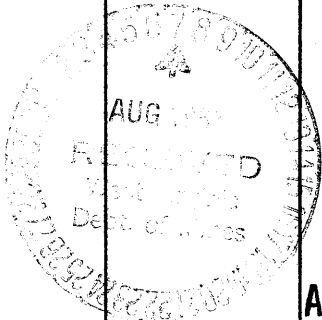
Quadrangle CAMERON 7180 Permit No. Mono A324PP

Company The Manufacturers Light and Heat Co. Address 800 Union Trust Bldg., Pitts. 19, Pa. Farm J. P. Reid Acres 92 Location (waters) Well No. L-2944 Elev. 1408 District Liberty County Marshall The surface of tract is owned in fee by Mineral rights are owned by Drilling commenced September 19, 1924 Drilling completed November 11, 1924 Date Shot From To With Open Flow /10ths Water in Inch /10ths Merc. in Inch Volume Cu. Ft. Rock Pressure lbs. hrs. Oil bbls., 1st 24 hrs. Fresh water feet Salt water feet

Table with 4 columns: Casing and Tubing (Size, 16, 13, 10, 8 1/4, 6), Used in Drilling (287, 1293, 2154), Left in Well (1293, 2154), Packers (Kind of Packer, Size of, Depth set, Perf. top/bottom).

CASING CEMENTED SIZE No. Ft. Date COAL WAS ENCOUNTERED AT 752 FEET 950 FEET 1040 FEET INCHES INCHES INCHES

Table with 8 columns: Formation, Color, Thick by sft., Top, Bottom, Oil, Gas or Water, Depth Found, Remarks. Rows include Waynesburg Coal, Mapletown Coal, Pgh. Coal, Murphy Sand, Little Dunkard, Big Dunkard, Gas Sand, 1st Salt Sand, 2nd Salt Sand, Maxon Sand, Pencil Cave, Big Lime, Big Injun, Fifty Foot, Gordon Gray, Gordon, Fifth Sand, and TOTAL DEPTH.



APR 6 1962

