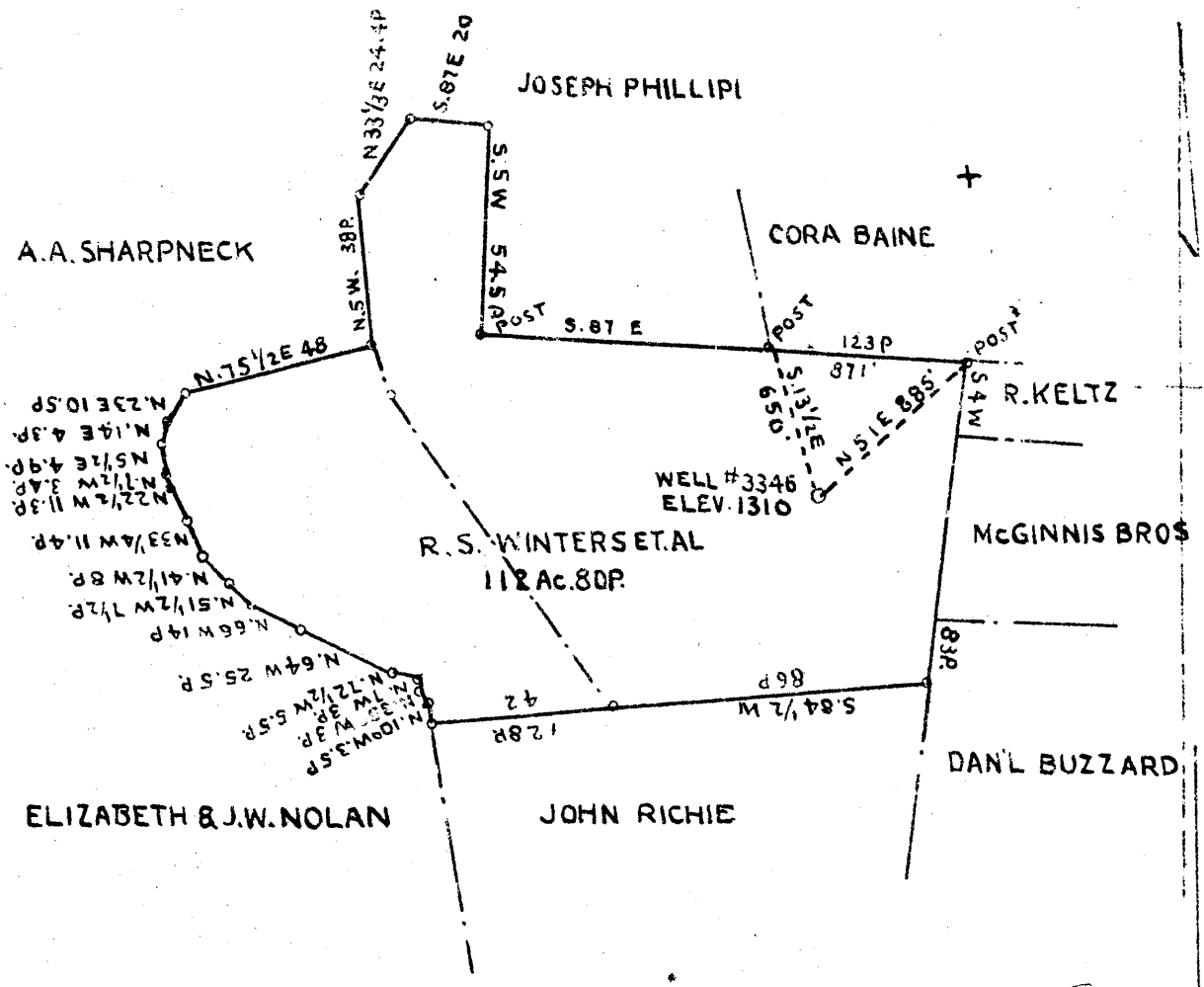


3.71
1.70



3.71 S
1.70 W

COAL OWNED BY STATE OF WEST VIRGINIA

- NEW LOCATION
- DRILL DEEPER
- ABANDONMENT

COMPANY THE MANUFACTURERS LIGHT AND HEAT CO.
 ADDRESS 800' UNION TRUST BUILDING PITTSBURGH PA.
 FARM R. S. WINTERS
 TRACT _____ ACRES 112.50 LEASE NO. 4237
 WELL (FARM) NO. 2 SERIAL NO. 3346
 ELEVATION (SPIRIT LEVEL) 1310'
 QUADRANGLE CAMERON EC
 COUNTY MARSHALL DISTRICT CAMERON
 ENGINEER *Re Mercer*
 ENGINEER'S REGISTRATION NO. _____
 FILE NO. FLD. Bk. 28 P-71 DRAWING NO. Y-11-72
 DATE SEPTEMBER 26 - 44 SCALE 1" = 800'

STATE OF WEST VIRGINIA
 DEPARTMENT OF MINES
 OIL AND GAS DIVISION
 CHARLESTON

WELL LOCATION MAP

FILE NO. MARS-214-A

NOW 05101269

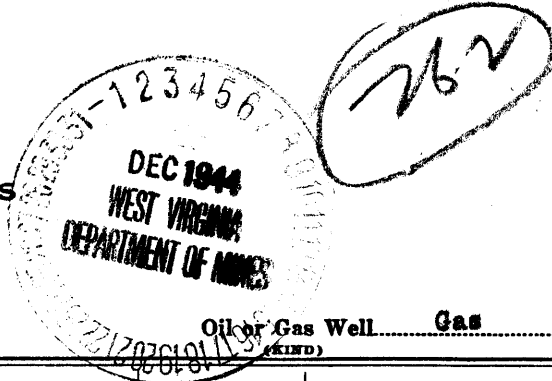
☒ DENOTES LOCATION OF WELL ON UNITED STATES TOPOGRAPHIC MAPS SCALE 1 TO 62,500. LATITUDE AND LONGITUDE LINES BEING REPRESENTED BY BORDER LINES AS SHOWN.

☐ DENOTES ONE INCH SPACES ON BORDER LINE OF ORIGINAL DRAWING.



STATE OF WEST VIRGINIA
DEPARTMENT OF MINES
OIL AND GAS DIVISION

WELL RECORD



Permit No. 214-A Drilled in 1929

Oil or Gas Well Gas
(KIND)

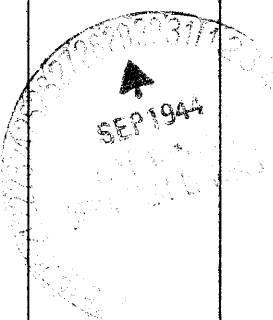
Company The Manufacturers Light & Heat Company
Address 800 Union Trust Bldg., Pittsburgh, Pa.
Farm R. S. Winters Acres 115
Location (waters) _____
Well No. 2 -- 3346 Elev. 1310 ft.
District Cameron County Marshall
The surface of tract is owned in fee by B. L. Hagerman
Address Cameron, W. Va.
Mineral rights are owned by The Mfrs. L. & H. Co.
800 Union Trust Bldg. Address Pittsburgh, Pa.
Drilling commenced 5/25/29
Drilling completed 7/3/29
Date Shot _____ From _____ To _____
With _____
Open Flow 24/10ths Water in 1/4 Inch
_____ /10ths Merc. in _____ Inch
Volume _____ Cu. Ft.
Rock Pressure 51 lbs. _____ hrs.
Oil _____ bbls., 1st 24 hrs.
Fresh water _____ feet _____ feet
Salt water _____ feet _____ feet

Casing and Tubing	Used in Drilling	Left in Well	Packers
Size			
16			Kind of Packer
18			<u>Not packed</u>
10	<u>303'</u>		Size of
8 1/4	<u>1325' 8"</u>	<u>1325' 8"</u>	Depth set
6 1/2	<u>2235'</u>	<u>2235'</u>	
5 3/16			Perf. top
3			Perf. bottom
2			Perf. top
Liners Used			Perf. bottom

CASING CEMENTED _____ SIZE _____ No. Ft. _____ Dat _____

COAL WAS ENCOUNTERED AT 645 FEET 36 INCHES
845 FEET 48 INCHES 943 FEET 60 INCHES
1570 FEET 120 INCHES _____ FEET _____ INCHES

Formation	Color	Hard or Soft	Top	Bottom	Oil, Gas or Water	Depth Found	Remarks
Soil & Clay			0	105			
Sand			105	150			
Slate and Lime			150	545			
Shells			545	645			
Waynesburg Coal			645	648			
Lime			648	670			
Slate & Lime			670	790			
Lime			790	845			
Mapletown Coal			845	849			
Slate			849	905			
Lime			905	943			
Pittsburgh Coal			943	948			
Lime			948	998			
Red Rock			998	1020			
Sand			1020	1050			
Red Rock			1050	1090			
Slate			1090	1170			
Murphy Sand			1170	1200			
Red Rock			1200	1250			
Slate			1250	1270			
Red Rock			1270	1320			
Little Dunkard			1320	1365			
Slate			1365	1420			
Big Dunkard			1420	1480			
Slate			1480	1520			
Lime Shells			1520	1540			
Sand Shells			1540	1570			
Freeport Coal			1570	1580			
Slate & Lime			1580	1615			
Gas Sand			1615	1657			
Slate			1657	1675			
Lime & Slate			1675	1695			
1st Salt Sand			1695	1740			
Slate			1740	1800			
Lime Shells			1800	1815			
2nd Salt Sand			1815	1916			
Slate & Lime			1916	1975			
Maxon Sand			1975	2025			



(Over)

WIN 1 5 1944

Formation	Color	Hard or Soft	Top	Bottom	Oil, Gas or Water	Depth Found	Remarks
Pencil Cave			2025	2028			
Big Lime			2028	2075			
Big Injun			2075	2325			
Slate			2325	2385			
Lime Shells			2385	2455			
Slate			2455	2489			
Lime Shells			2489	2550			
Slate			2550	2600			
Lime Shells			2600	2625			
Slate			2625	2655			
Lime Shells			2655	2757			
Slate			2757	2800			
Lime Shells			2800	2880			
50-Foot Sand			2880	2904			
Slate			2904	2924			
Gordon Sand			2924	2961	Gas		
Slate			2961	3000			
4th Sand			3000	3005			
Slate			3005	3048			
5th Sand			3048	3058			
Slate & Shells			3058	3132			
Total depth				3132			

Date September 22nd, 1944

APPROVED THE MANUFACTURERS LIGHT & HEAT CO., Owner

By Harry H. Fowler
Land Dept. (Title) Office Manager