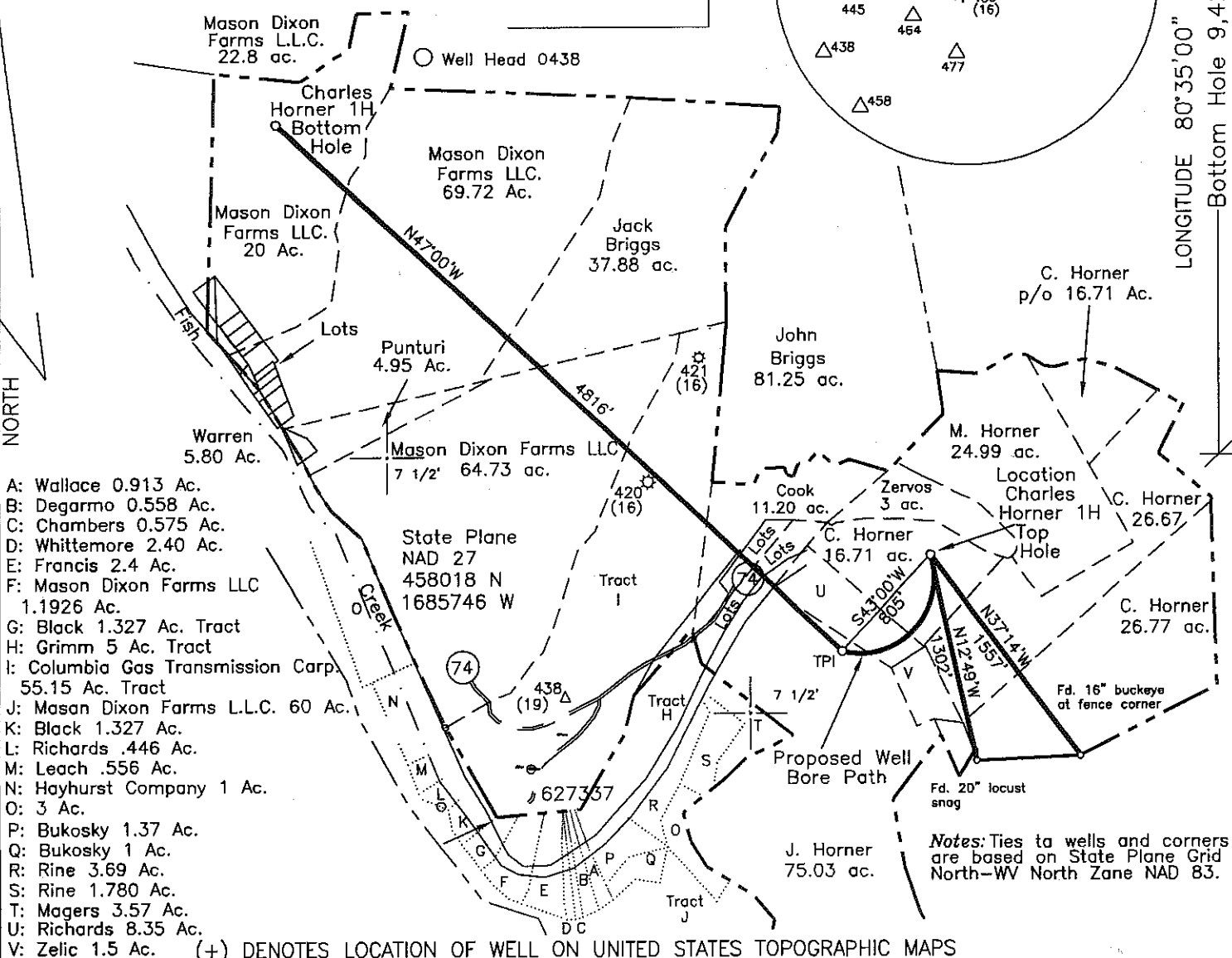
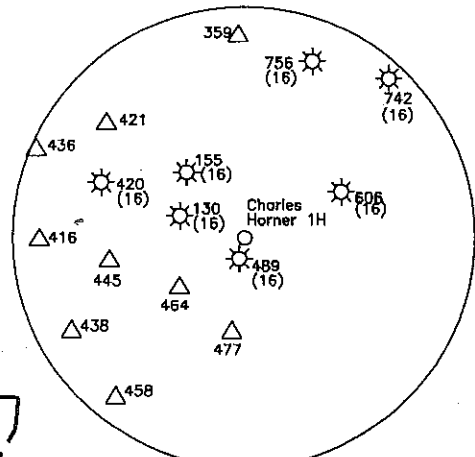
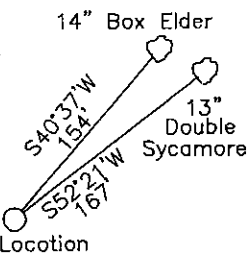


**Top Hole**  
NAD 27-39.758103 N, 80.606245 W  
NAD 83-39.758184 N, 80.606049 W  
State Plane NAD 27-460146 N, 1688998 E

**TP 1**  
NAD 27-39.756469 N, 80.608171 W  
NAD 83-39.756549 N, 80.607975 W  
State Plane NAD 27-459557 N, 1688449 E

**Bottom Hole**  
NAD 27-39.765367 N, 80.620844 W  
NAD 83-39.765446 N, 80.620649 W  
State Plane NAD 27-462842 N, 1684926 E

References



- A: Wallace 0.913 Ac.
  - B: Degarmo 0.558 Ac.
  - C: Chambers 0.575 Ac.
  - D: Whittemore 2.40 Ac.
  - E: Francis 2.4 Ac.
  - F: Mason Dixon Farms LLC 1.1926 Ac.
  - G: Black 1.327 Ac. Tract
  - H: Grimm 5 Ac. Tract
  - I: Columbia Gas Transmission Corp. 55.15 Ac. Tract
  - J: Mason Dixon Farms L.L.C. 60 Ac.
  - K: Black 1.327 Ac.
  - L: Richards .446 Ac.
  - M: Leach .556 Ac.
  - N: Hayhurst Company 1 Ac.
  - O: 3 Ac.
  - P: Bukosky 1.37 Ac.
  - Q: Bukosky 1 Ac.
  - R: Rine 3.69 Ac.
  - S: Rine 1.780 Ac.
  - T: Magers 3.57 Ac.
  - U: Richards 8.35 Ac.
  - V: Zelic 1.5 Ac.
- (+) DENOTES LOCATION OF WELL ON UNITED STATES TOPOGRAPHIC MAPS

Notes: Ties to wells and corners are based on State Plane Grid North-WV North Zone NAD 83.

FILE NO. \_\_\_\_\_  
DRAWING NO. 1  
SCALE 1" = 1000'  
MINIMUM DEGREE OF ACCURACY 1 in 200  
PROVEN SOURCE OF ELEVATION GPS  
submeter unit

I THE UNDERSIGNED, HEREBY CERTIFY THAT THIS PLAT IS CORRECT TO THE BEST OF MY KNOWLEDGE AND BELIEF AND SHOWS ALL THE INFORMATION REQUIRED BY LAW AND THE REGULATIONS ISSUED AND PRESCRIBED BY THE DEPARTMENT OF ENERGY.

(SIGNED) David Z. Jahan  
R.P.E. \_\_\_\_\_ L.L.S. 708

STATE OF WEST VIRGINIA  
Division of Environmental Protection  
OFFICE OF OIL AND GAS

DATE August 13, 2009  
OPERATOR'S WELL NO. Charles Horner 1H  
API WELL NO. 831289

WELL TYPE: OIL \_\_\_ GAS X LIQUID INJECTION \_\_\_ WASTE DISPOSAL \_\_\_  
(IF "GAS") PRODUCTION X STORAGE \_\_\_ DEEP \_\_\_ SHALLOW X  
LOCATION: ELEVATION 776' WATER SHED Fish Creek  
DISTRICT Liberty COUNTY Marshall  
QUADRANGLE Cameron 7 1/2'

47 - 051 - 01314-H  
STATE COUNTY PERMIT  
**CANCELLED**

SURFACE OWNER Charles E. Horner & Delorse A. Horner, Life Estate ACREAGE 16.71 Ac.  
OIL & GAS ROYALTY OWNER Charles Horner et al LEASE ACREAGE 320.89 Ac.  
LEASE NO. XY2296, 1236923, 1240093, 1236873, 1240107, 1254732, 1254733, 1255017, & 1241162  
PROPOSED WORK: DRILL X CONVERT \_\_\_ DRILL DEEPER \_\_\_ REDRILL \_\_\_ FRACTURE OR STIMULATE \_\_\_ PLUG OFF OLD FORMATION \_\_\_ PERFORATE NEW FORMATION X OTHER PHYSICAL CHANGE IN WELL (SPECIFY) \_\_\_\_\_

PLUG AND ABANDON \_\_\_ CLEAN OUT AND REPLUG \_\_\_  
TARGET FORMATION Marcellus ESTIMATED DEPTH 7,122'+ Horizontal Leg  
WELL OPERATOR Chesapeake Appalachia, L.L.C. DESIGNATED AGENT James E. Grey  
ADDRESS P.O. Box 18496 Oklahoma City, OK 73154-0496 ADDRESS P.O. Box 6070 Charleston, WV 25362

08/10/2012