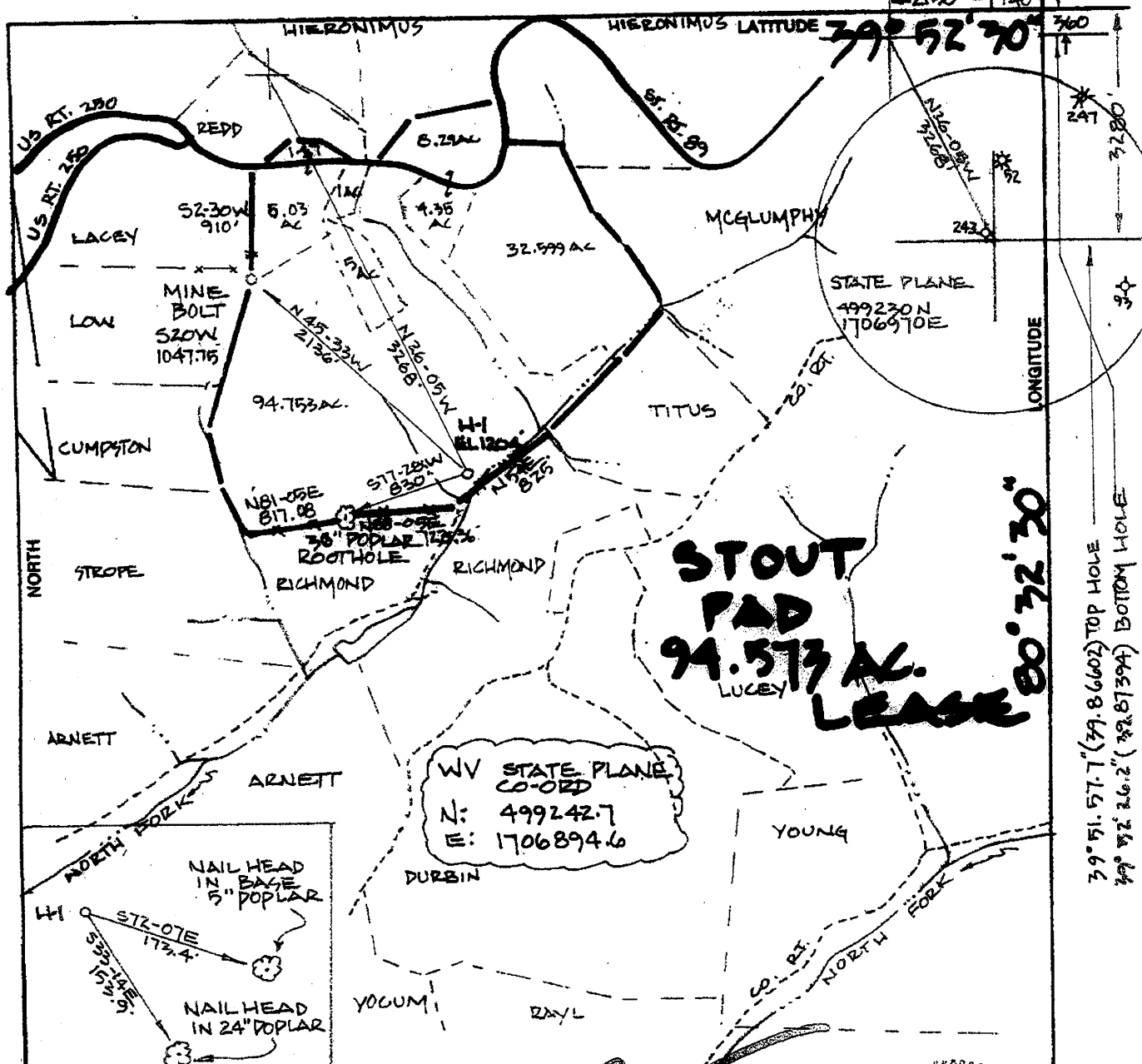


80° 32' 39.1 (80.54421) TOP HOLE
 80° 32' 57.5 (80.54931) BOTTOM HOLE

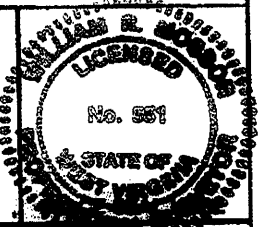


39° 51' 57.7 (39.86602) TOP HOLE
 39° 52' 26.2 (39.87394) BOTTOM HOLE

WV STATE PLANE
 CO-ORD
 N: 499242.7
 E: 1706894.6

FILE NO. _____
 DRAWING NO. _____
 SCALE 1" = 1000'
 MINIMUM DEGREE OF ACCURACY 1:200
 PROVEN SOURCE OF ELEVATION G.P.S. OBSERVATION

I THE UNDERSIGNED, HEREBY CERTIFY THAT THIS PLAT IS CORRECT TO THE BEST OF MY KNOWLEDGE AND BELIEF AND SHOWS ALL THE INFORMATION REQUIRED BY LAW AND THE REGULATIONS AND ORDINANCES BY THE DEPARTMENT OF ENERGY AND NATURAL RESOURCES.



STATE OF WEST VIRGINIA
 DEPARTMENT OF ENERGY
 DIVISION OF OIL AND GAS

DATE OCTOBER 2010
 OPERATOR'S WELL NO. STOUT #1
 API WELL NO. 47-051-01463H

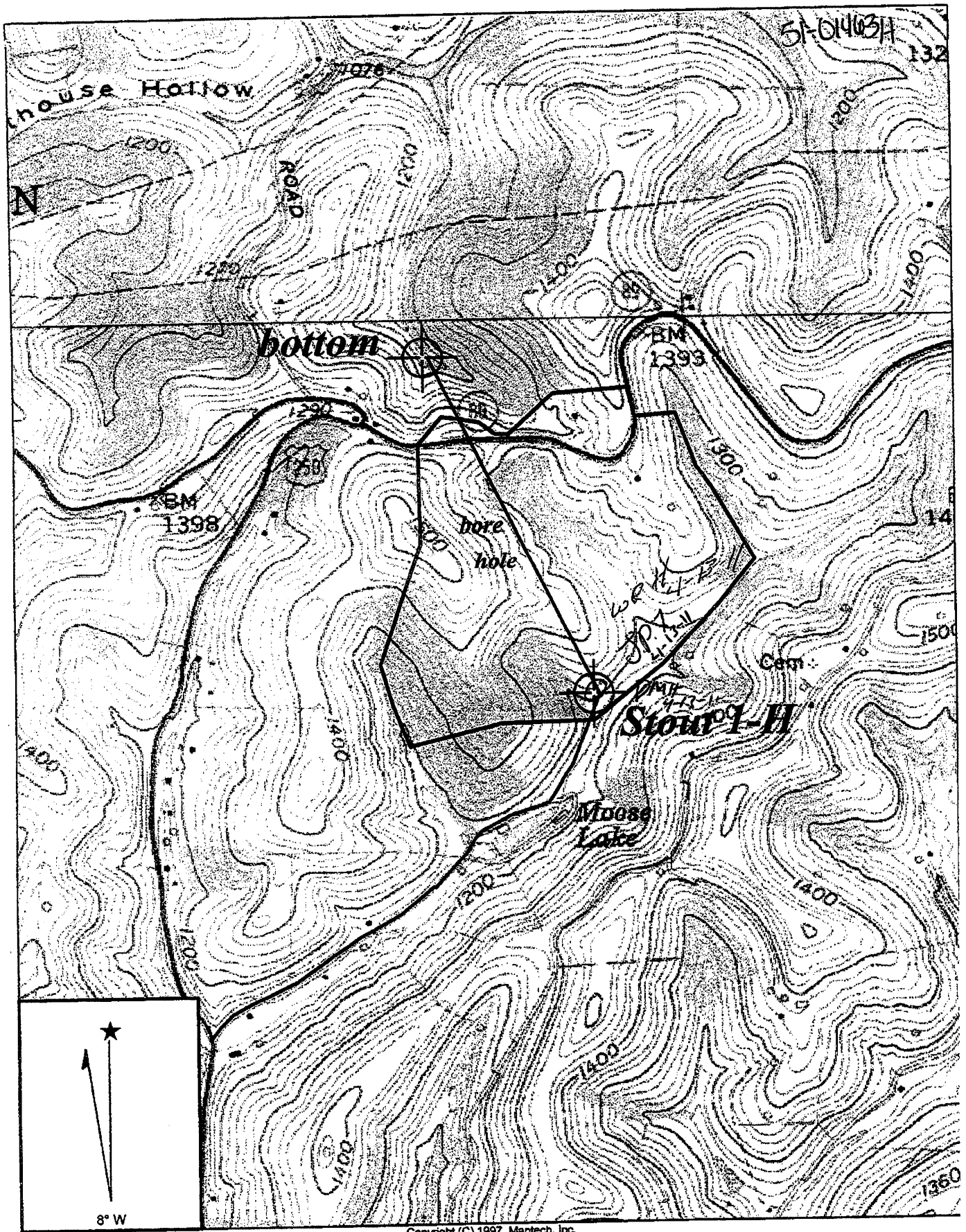
WELL TYPE: OIL GAS LIQUID INJECTION WASTE DISPOSAL
 (IF "GAS," PRODUCTION STORAGE DEEP SHALLOW

LOCATION: ELEVATION 1200 WATER BEND NORTH FORK GRAVE CREEK
 DISTRICT Conchein Coal Co COUNTY MARSHALL
 QUADRANGLE Cameron 75

SURFACE OWNER same ACREAGE 36.95
 OIL & GAS ROYALT same LEASE AC 36.95

PROPOSED WORK: DRILL REPAIR PLUG AND ABANDON STIMULATE PLUG OFF OLD FORMATION REPERFORATE NEW FORMATION OTHER PHYSICAL CHANGE IN WELL (SPECIFY) _____

PLUG AND ABANDON CLEAN OUT AND REGRIND
 TARGET FORMATION Marcellus ESTIMATED DEPTH 37500
 WELL OPERATOR Trans Energy Inc DESIGNATED AGENT 2610
 ADDRESS _____ ADDRESS _____



Copyright (C) 1997, Maptech, Inc.

CAMERON QUADRANGLE

SCALE 1" = 1000'

TRANS ENERGY, INC.

WELL: STOUT 1H
 CONRHEIN COAL COMPANY +/-95 ACRE LEASE

CAMERON DISTRICT MARSHALL COUNTY WEST VIRGINIA

MAY 20 2011