

form ww6

LATITUDE 39° 45' 00"

(TH) 10,510'
(BH) 10,510'

NOTES

OWNERSHIP TAKEN FROM PUBLIC RECORDS OF MARSHALL COUNTY, WV IN MARCH, 2017.
COORDINATES AND WELL TIES BASED UPON DIFFERENTIAL GPS MEASUREMENTS. WELL LOCATION REFERENCES ARE BASED UPON THE MAGNETIC MERIDIAN.

SURFACE HOLE
UTM. NAD83, ZONE 17
IN METERS
N) 4,398,561.28
E) 514,668.22

BOTTOM HOLE
UTM. NAD83, ZONE 17
IN METERS
N) 4,398,561.28
E) 514,668.22

(TH) 4,820'
(BH) 4,820'

GOUDY LEASE
WELL NO. 10H
47-051-01594
644.05± ACRES

20-34
PPG INDUSTRIES, INC.
206.61 ACRES

21-24
PPG INDUSTRIES, INC.
132.5 ACRES

21-22
PEGGY L. BOWEN
18.29 ACRES

21-19
CARL MOORE, ET AL
134.74 ACRES

GASTAR LEASE
WV16-0076-001

BOTTOM HOLE **TOP HOLE**

21-5
PPG INDUSTRIES, INC.
21.9 ACRES

21-3
PPG INDUSTRIES, INC.
208.76 ACRES

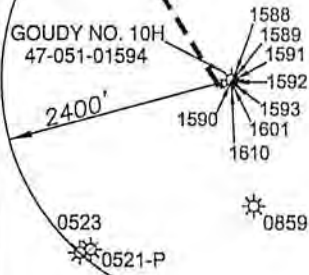
NOTE: BORE PATH BASED ON GRID NORTH.

GRID NORTH

21-7
PPG INDUSTRIES, INC.
69.7 ACRES

21-20
JOHN MOORE
31 ACRES

21-18
JOHN MOORE
51.44 ACRES



21-8
PPG IND., INC.
13.73 ACRES

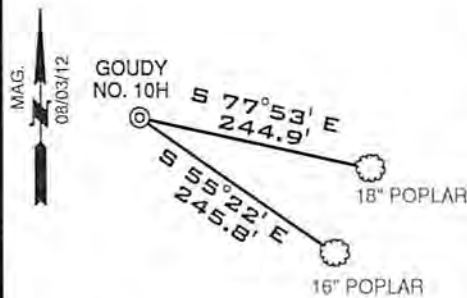
21-8
PPG INDUSTRIES, INC.
54.0 ACRES

21-17
PPG INDUSTRIES, INC.
34.43 ACRES



28-2
BAYER MATERIAL SCIENCES, LLC
99.5 ACRES

REFERENCES



21-13
PPG IND., INC.
20.54 ACRES

GASTAR LEASE
WV16-0076-001

21-15
PPG INDUSTRIES, INC.
80.69 ACRES

LEGEND

- LEASED TRACTS
- INTERIOR MINERAL TRACTS
- SURFACE TRACTS
- HARD LEASE LINE

B.H.

AS-DRILLED GOUDY NO. 10H
47-051-1594

GASTAR LEASE
WV16-0076-001

28-13
PPG IND., INC.
81.36 ACRES

GASTAR LEASE
WV16-0076-001

SCALE 1"=200'

(+) DENOTES LOCATION ON UNITED STATES TOPOGRAPHIC MAPS

FILE NUMBER W0120315 (WB1-55)

DRAWING NUMBER GOUDY_WP_10H-AD

SCALE 1" = 1000'

MINIMUM DEGREE OF ACCURACY 1/200

PROVEN SOURCE OF ELEVATION SUBMETER MAPPING
GRADE GPS

I, THE UNDERSIGNED, HEREBY CERTIFY THAT THIS PLAT IS CORRECT TO THE BEST OF MY KNOWLEDGE AND BELIEF AND SHOWS ALL THE INFORMATION REQUIRED BY LAW AND THE REGULATIONS ISSUED AND PRESCRIBED BY THE DEPARTMENT OF ENVIRONMENTAL PROTECTION

P.S. 2122 *Jonathan N. White*



WVDEP
OFFICE OF OIL & GAS
601 57TH STREET
CHARLESTON, WV 25304



RECEIVED
Office of Oil and Gas
SEP 26 2017

WV Department of Environmental Protection
DATE: APRIL 5, 2017

WELL TYPE: OIL GAS LIQUID INJECTION WASTE DISPOSAL
(IF "GAS") PRODUCTION STORAGE DEEP SHALLOW

OPERATORS WELL NO. GOUDY NO. 10H

API WELL NO. 47-051-01594

STATE COUNTY PERMIT

LOCATION ELEVATION 1239' WATERSHED _____ TRIBUTARY OF THE OHIO RIVER

DISTRICT FRANKLIN COUNTY MARSHALL

QUADRANGLE NEW MARTINSVILLE 7.5' LEASE NUMBER WV16-0076-001

SURFACE OWNER PPG INDUSTRIES, INC. ACREAGE 81.36

OIL & GAS ROYALTY OWNER PPG INDUSTRIES, INC. LEASE ACREAGE 644.05

PROPOSED WORK: DRILL CONVERT DRILL DEEPER REDRILL FRACTURE OR STIMULATE PLUG OFF OLD FORMATION
PERFORATE NEW FORMATION OTHER PHYSICAL CHANGE (SPECIFY) _____

PLUG & ABANDON CLEAN OUT & REPLUG

TARGET FORMATION MARCELLUS ESTIMATED DEPTH 110'

WELL OPERATOR GASTAR EXPLORATION USA, INC. DESIGNATED AGENT MICHAEL McCOWN

ADDRESS 229 W MAIN STREET, SUITE 301
CLARKSBURG WV, 26301 ADDRESS 229 W MAIN STREET, SUITE 301
CLARKSBURG WV, 26301

COUNTY NAME
PERMIT