

Surface Hole
UTM NAD 83(meters)-4396892.210 N. 524694.023 E
LP
UTM NAD 83(meters)-4397027.593 N. 524877.678 E
Bottom Hole
UTM NAD 83(meters)-4396147.338 N. 525826.612 E

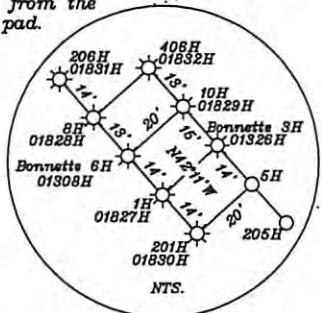
Note: All wells within 500' of the horizontal leg are shown on this plat based upon information taken from DEP mapping, well plats and aerial photos.

Note: No water wells were found within 250' of well location. A dwelling is located S18°21'W 534' from the center of the pad.

Surface Hole
UTM NAD 83(meters)-4396892.211 N. 524693.981 E
LP
UTM NAD 83(meters)-4397004.116 N. 524897.739 E
Bottom Hole
UTM NAD 83(meters)-4396129.689 N. 525816.540 E

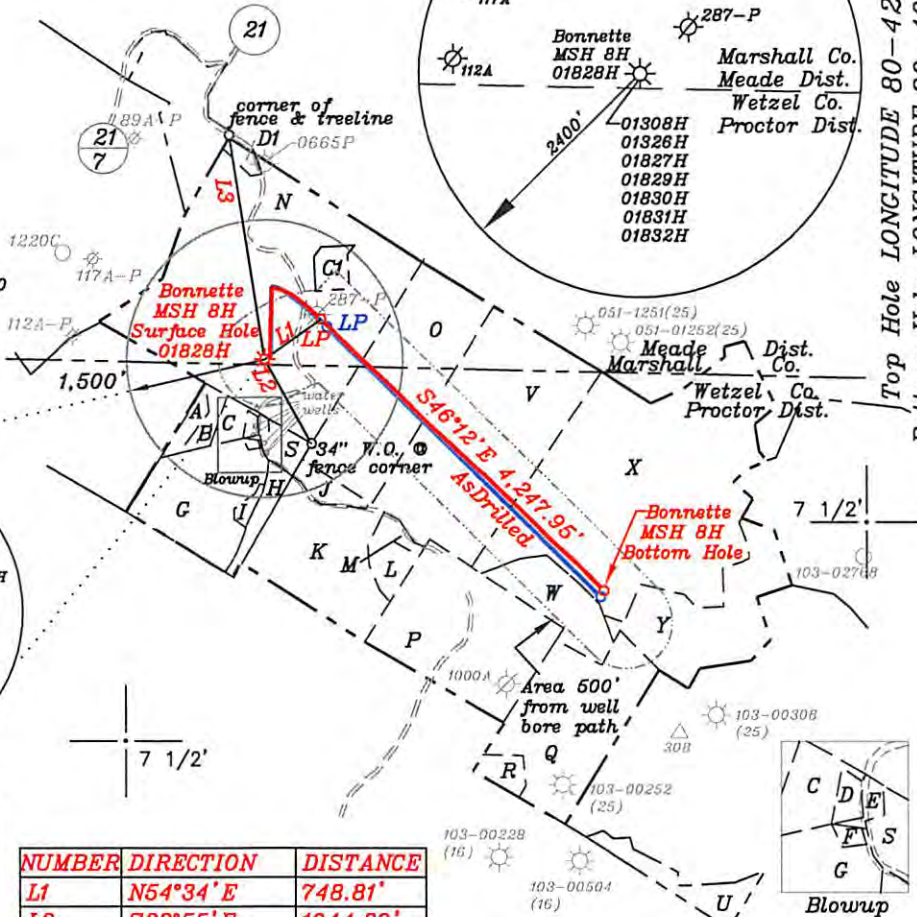
- A = Ries 3 Ac. T.M. 3/8
- B = Hohman 4.07 Ac. T.M. 3/8.3
- C = Hohman 4.12 Ac. T.M. 3/8.2&8.1 1-254855-000
- D = B. Ferrell 1 Ac. T.M. 3/9
- E = B. Ferrell 0.54 Ac. T.M. 3/10.1
- F = B. Ferrell 0.33 Ac. T.M. 3/10.5
- G = J. Ferrell 28.97 Ac. T.M. 3/10.3
- H = Miller 5.02 Ac. T.M. 3/10.2
- I = Ferrell 1.29 Ac. T.M. 3/10.4
- J = Zombotti 4.34 Ac. T.M.3/11.2
- K = R. Yoho et al 38.59 Ac. T.M. 3/11
- L = Blatt 7.42 Ac. T.M. 3/11.3
- M = Herrick 0.65 Ac. T.M. 3/11.1
- N = Bonnette 126.53 Ac. T.M. 22/8 1-254855-000
- O = Foz 56 Ac. T.M. 4/1 1-254904-000
- P = Dulaney 52 Ac. T.M. 4/12
- Q = Klug 48 Ac. T.M. 4/22
- R = Estep 3.45 Ac. T.M. 4/21
- S = Zombotti 4.15 Ac. T.M. 3/10
- U = Scheibelhood 9.8 Ac. T.M. 4/32
- V = Foz 74.7 Ac. T.M. 4/2 1-254904-000
- W = Blatt 22.1 Ac. T.M. 4/13 1-254905-000
- X = Blatt 106.83 Ac. T.M. 4/3&4 1-254905-000
- Y = Blatt 37 Ac. T.M. 4/14 1-254836-000
- C1 = The Co. Comm. of Marshall Co. 3.143 Ac. T.M.22-8.1 1-254855-000
- D1 = Klug 1 Ac. T.M.22-7

Note: A dwelling is located S18°21'W 534' from the center of the pad.



LEGEND
AsDrilled Leg (Red Text)
Permit Leg (Blue Text)

NUMBER	DIRECTION	DISTANCE
L1	N54°34'E	748.81'
L2	S28°55'E	1044.89'
L3	N08°54'W	2442.66'

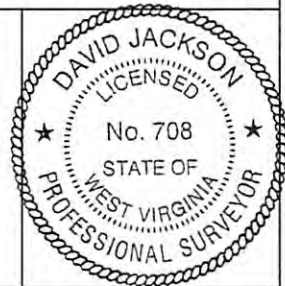


Note: Ties to wells and corners are based on State Plane Grid North-WV North Zone NAD 83.

(+) DENOTES LOCATION OF WELL ON UNITED STATES TOPOGRAPHIC MAPS

FILE NO. _____
DRAWING NO. 1
SCALE 1" = 2000'
MINIMUM DEGREE OF ACCURACY 1 in 200
PROVEN SOURCE OF ELEVATION GPS
submeter unit

I THE UNDERSIGNED, HEREBY CERTIFY THAT THIS PLAT IS CORRECT TO THE BEST OF MY KNOWLEDGE AND BELIEF AND SHOWS ALL THE INFORMATION REQUIRED BY LAW AND THE RULES ISSUED AND PRESCRIBED BY THE DEPARTMENT OF ENVIRONMENTAL PROTECTION.
(SIGNED) David L Jackson
R.P.E. _____ L.L.S. 708



STATE OF WEST VIRGINIA
Division of Environmental Protection
OFFICE OF OIL AND GAS

DATE March 1, 2016
OPERATOR'S WELL NO. Bonnette MSH 8H
API WELL NO. 47-051-01828H
STATE COUNTY PERMIT

WELL TYPE: OIL GAS LIQUID INJECTION WASTE DISPOSAL (IF "GAS") PRODUCTION X STORAGE DEEP SHALLOW X

LOCATION: ELEVATION 1,427.7' WATER SHED Whetstone Creek
DISTRICT Meade COUNTY Marshall
QUADRANGLE Wileyville 7 1/2'

SURFACE OWNER Robert and Linda Bonnette ACREAGE 126.53 ac.
OIL & GAS ROYALTY OWNER Robert and Linda Bonnette, Robert and Barbara Bias, & Larry and Glenda Kress LEASE ACREAGE 426.303 ac.

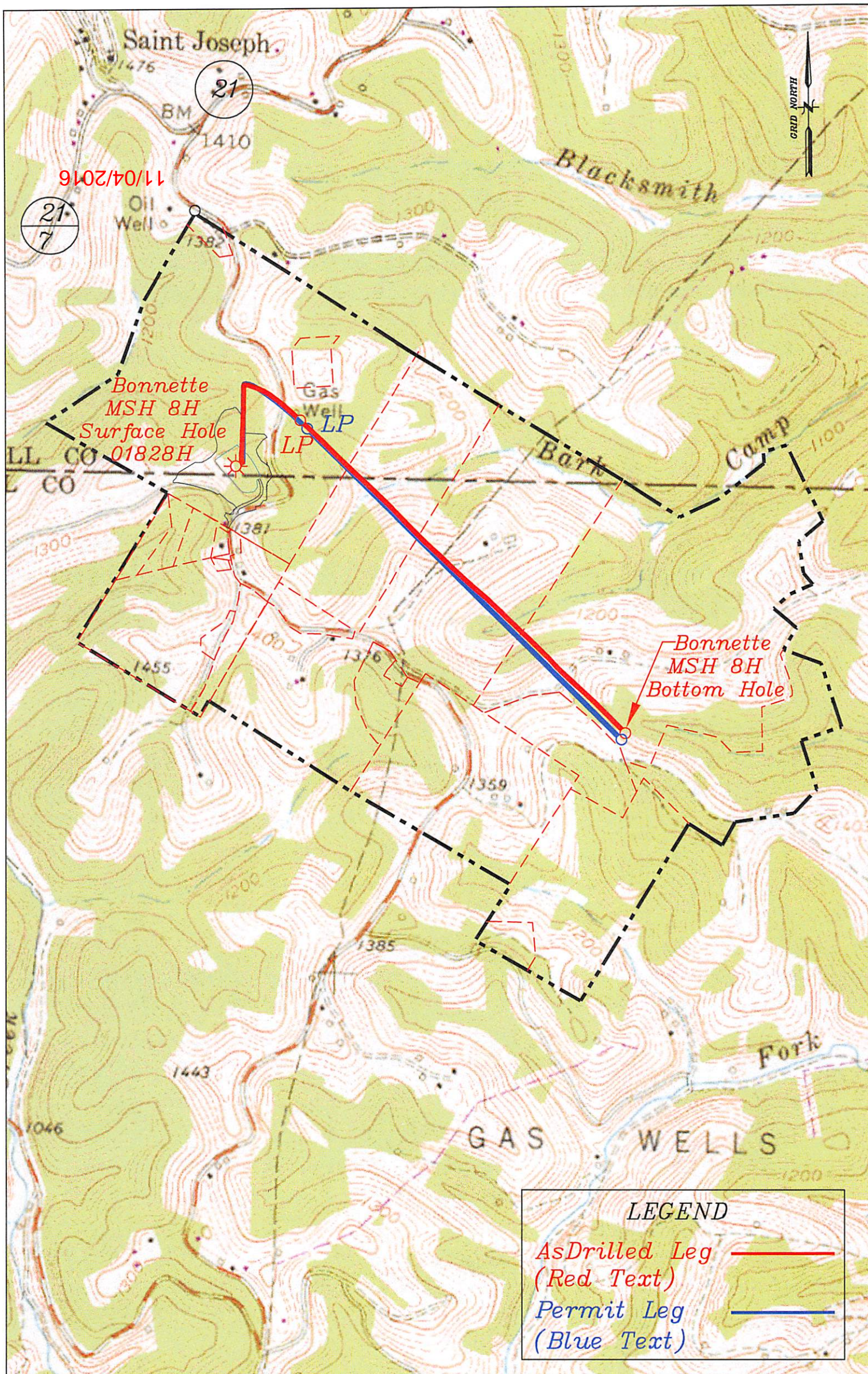
LEASE NO. _____
LEASE NO. _____

PROPOSED WORK: DRILL X CONVERT DRILL DEEPER REDRILL FRACTURE OR STIMULATE X PLUG OFF OLD FORMATION PERFORATE NEW FORMATION X OTHER PHYSICAL CHANGE IN WELL (SPECIFY) AsDrilled

PLUG AND ABANDON CLEAN OUT AND REPLUG
TARGET FORMATION Marcellus ESTIMATED DEPTH TVD=7,103'; TMD=11,791'
WELL OPERATOR SWN Production Co. LLC DESIGNATED AGENT Dee Southall
ADDRESS P.O. Box 1300 Jane Lew, WV 26378 ADDRESS P.O. Box 1300 Jane Lew, WV 26378

11/04/2016

Top Hole LONGITUDE 80-42-30 W
Bottom Hole LONGITUDE 80-40-00 W
Bottom Hole 12,729'
Top Hole 10,377'



Well: Bonnette MSH 8H
 Quad: Wileyville 7 1/2'
 District: Meade
 County: Marshall