

SURFACE HOLE

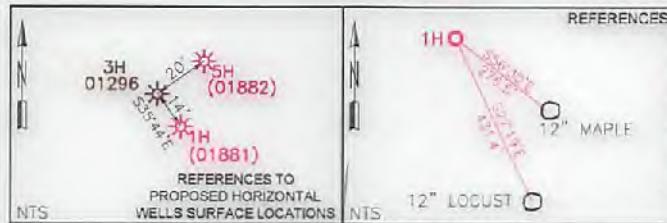
11,224'

Latitude: 39°45'00"

BOTTOM HOLE

3,673'

JACKSON SURVEYING INC. P.O. Box 1460 677 W. Main St. Clarksburg, WV 26302 304-623-5851



REFERENCES

Table with 2 columns: LOCATION, COORDINATES. Includes SURFACE HOLE LOCATION (SHL) and LANDING POINT LOCATION (LPL).

Table with 2 columns: LOCATION, COORDINATES. Includes BOTTOM HOLE LOCATION (BHL).

Table with 3 columns: NUMBER, DIRECTION, DISTANCE. Lists L1, L2, L3 with bearings and distances.

Table with 2 columns: LOCATION, COORDINATES. Includes SURFACE HOLE LOCATION (SHL) and BOTTOM HOLE LOCATION (BHL).

Table with 2 columns: LOCATION, COORDINATES. Includes SURFACE HOLE LOCATION (SHL) and BOTTOM HOLE LOCATION (BHL).

Table with 2 columns: LOCATION, COORDINATES. Includes SURFACE HOLE LOCATION (SHL) and BOTTOM HOLE LOCATION (BHL).

Table with 2 columns: LOCATION, COORDINATES. Includes SURFACE HOLE LOCATION (SHL) and BOTTOM HOLE LOCATION (BHL).

Table with 2 columns: LOCATION, COORDINATES. Includes SURFACE HOLE LOCATION (SHL) and BOTTOM HOLE LOCATION (BHL).

Table with 2 columns: LOCATION, COORDINATES. Includes SURFACE HOLE LOCATION (SHL) and BOTTOM HOLE LOCATION (BHL).

Table with 2 columns: LOCATION, COORDINATES. Includes SURFACE HOLE LOCATION (SHL) and BOTTOM HOLE LOCATION (BHL).

Table with 2 columns: LOCATION, COORDINATES. Includes SURFACE HOLE LOCATION (SHL) and BOTTOM HOLE LOCATION (BHL).

Table with 2 columns: LOCATION, COORDINATES. Includes SURFACE HOLE LOCATION (SHL) and BOTTOM HOLE LOCATION (BHL).

Table with 2 columns: LOCATION, COORDINATES. Includes SURFACE HOLE LOCATION (SHL) and BOTTOM HOLE LOCATION (BHL).

Table with 2 columns: LOCATION, COORDINATES. Includes SURFACE HOLE LOCATION (SHL) and BOTTOM HOLE LOCATION (BHL).

Table with 2 columns: LOCATION, COORDINATES. Includes SURFACE HOLE LOCATION (SHL) and BOTTOM HOLE LOCATION (BHL).

Table with 2 columns: LOCATION, COORDINATES. Includes SURFACE HOLE LOCATION (SHL) and BOTTOM HOLE LOCATION (BHL).

Table with 2 columns: LOCATION, COORDINATES. Includes SURFACE HOLE LOCATION (SHL) and BOTTOM HOLE LOCATION (BHL).

Table with 2 columns: LOCATION, COORDINATES. Includes SURFACE HOLE LOCATION (SHL) and BOTTOM HOLE LOCATION (BHL).

Table with 2 columns: LOCATION, COORDINATES. Includes SURFACE HOLE LOCATION (SHL) and BOTTOM HOLE LOCATION (BHL).

Table with 2 columns: LOCATION, COORDINATES. Includes SURFACE HOLE LOCATION (SHL) and BOTTOM HOLE LOCATION (BHL).

Table with 2 columns: LOCATION, COORDINATES. Includes SURFACE HOLE LOCATION (SHL) and BOTTOM HOLE LOCATION (BHL).

Table with 2 columns: LOCATION, COORDINATES. Includes SURFACE HOLE LOCATION (SHL) and BOTTOM HOLE LOCATION (BHL).

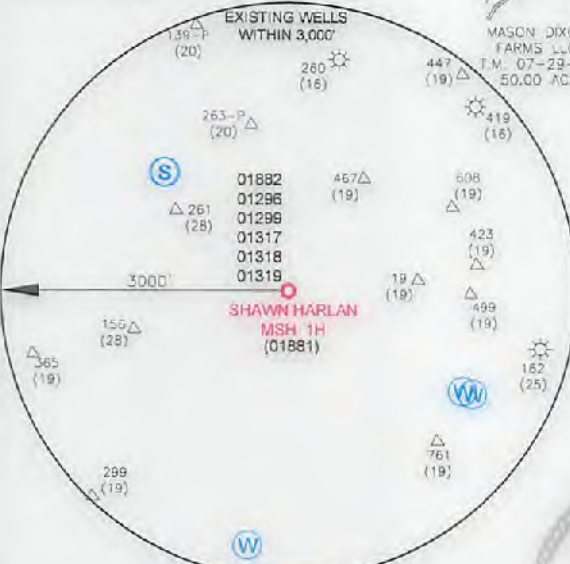
Table with 2 columns: LOCATION, COORDINATES. Includes SURFACE HOLE LOCATION (SHL) and BOTTOM HOLE LOCATION (BHL).

Table with 2 columns: LOCATION, COORDINATES. Includes SURFACE HOLE LOCATION (SHL) and BOTTOM HOLE LOCATION (BHL).

Table with 2 columns: LOCATION, COORDINATES. Includes SURFACE HOLE LOCATION (SHL) and BOTTOM HOLE LOCATION (BHL).

ROYALTY OWNERS FOR (1):

Janet E. Wilbur A/K/A Janet T. Wilbur, A/K/A Janet E. Teagarden Wilbur, David A. Donald Ray Baker, Eva T. Stalker (Eva T. Stalker, Trustee of the Eva T. Stalker Trust, Dated December 28, 1989), Jeanne G. DeClue (The Jeanne Govro de Clue, Revocable Living Trust DTD July 9, 2001), Stephen C. Justman, Hayhurst Company (Chestnut Holdings, Inc.), Jack Hammers, Paul Hammers, Twila Ora Whipkey (Twila Ora Whipkey Trust Dated 8/25/1999), Wesbanco Bank Wheeling, Trustee, Toni Jo Mason, Erica M. Mason, O.E. Burge (Onward E. Burge, Sarah L. Burge and Stephen W. Burge, Trustees of the Onward E. Burge Trust Dated June 21, 2010 & Sarah L. Burge, Onward E. Burge and Stephen W. Burge, Trustees of the Sarah L. Burge Trust Dated June 21, 2010), A.L. Evans and Rachel Evans, (Donna K. Allen, Mary Lou Kittelberger, Debba A. Likavec and John D. Likavec, Nancy Jo Block, Chad E. Longfellow, Holly A. Longfellow, Tracy L. Barnaby, Lloyd R. Evans, Gloria Stine, Robert W. Cabbage, Clifford Cabbage, Robert W. Cabbage, Karen Cabbage, Dale E. Workman, Sandra E. Rush, Erma Nelida Jefferson, Laura K. Baker, Deborah A. Collins, Patty D. Jefferson, Joyce L. Lamb, Stacy L. Lyons, Carla Carswell Davis, Mel Todd Carswell, Jennifer Carswell Briere, Frank K. Bonadich, Jr., Jean V. Meier, Howard Ray Furbee, Robert Dale Furbee, Dorothy Evans, Ellen G. Kirkbride, Darlene Kay Albord, Marlene Fay Wagmiller, Elmer Dean Evans, Jack Hammers, Paul Hammers, Twila Ora Whipkey Trust Dated 8/25/1999, Wesbanco Bank Wheeling, Trustee, Toni Jo Mason, Erica Mason, O.E. Burge and Sarah Lou Burge, H/W and Stephen Burge, Chestnut Holdings).



SCALE 1"=2000'

I, THE UNDERSIGNED, HEREBY CERTIFY THAT THIS PLAT IS CORRECT TO THE BEST OF MY KNOWLEDGE AND BELIEF AND SHOWS ALL THE INFORMATION REQUIRED BY LAW AND REGULATIONS ISSUED AND PRESCRIBED BY THE DEPARTMENT OF ENVIRONMENTAL PROTECTION.

P.S. 708 David L. Jackson



- NOTES ON SURVEY: 1. NO DWELLINGS OR AGRICULTURAL BUILDINGS GREATER THAN 2,500 SQUARE FEET WITHIN 825 FEET OF PROPOSED CENTER OF PAD. 2. NO WATER WELLS OR DEVELOPED SPRINGS WITHIN 250 FEET OF PROPOSED WELL. 3. ALL WELLS WITHIN 500' OF THE HORIZONTAL LEG ARE SHOWN ON THIS PLAT BASED UPON INFORMATION TAKEN FROM DEP MAPPING, WELL PLATS AND AERIAL PHOTOS. 4. COORDINATES SYSTEM IS UTM, NAD 83 DATUM, ZONE 17, U.S. FOOT AND WELL COORDINATES ESTABLISHED USING SURVEY GRADE GPS.

Form containing well details: SHAWN HARLAN MSH 1H, OPERATOR'S WELL # 1H, API WELL # 47 051 01881, WELL TYPE: GAS, WATERSHED: LAUREL RUN OF UPPER OHIO SOUTH, DISTRICT: LIBERTY, COUNTY: MARSHALL, SURFACE OWNER: SCOTT L. HARLAN AND SHAWN HARLAN, OIL & GAS ROYALTY OWNER: SEE NOTE 5, DRILL: DRILL DEEPER, REDRILL, FRACTURE OR STIMULATE, PLUG OFF OLD FORMATION, PERFORATE NEW FORMATION, CONVERT, PLUG & ABANDON, CLEAN OUT & REPLUG, OTHER CHANGE (SPECIFY) ASDRILLED, TARGET FORMATION: MARCELLUS, ESTIMATED DEPTH: 7,189' TVD, WELL OPERATOR: SWN PRODUCTION COMPANY, LLC, ADDRESS: P.O. BOX 1300, CITY: JANE LEW, STATE: WV, ZIP CODE: 26378, DESIGNATED AGENT: DEE SOUTHALL, ADDRESS: P.O. BOX 1300, CITY: JANE LEW, STATE: WV, ZIP CODE: 26378, LEGEND: PROPOSED SURFACE HOLE / BOTTOM HOLE, EXISTING / PRODUCING WELLHEAD, LPL* LANDING POINT LOCATION, EXISTING WATER WELL, EXISTING SPRING, SURVEYED BOUNDARY, DRILLING UNIT, LEASE BOUNDARY, ASDRILLED PATH, PROPOSED PATH.

09/15/2017