



EQT (Chevron Data) 02-13-21

Marshall County, WV Chevron

Longworth

M03H

OH

Design: Longworth 3H As-Drilled

Standard Survey Report

20 July, 2021



EQT
Survey Report

Database:	EDM_Definitive	Local Co-ordinate Reference:	Well M03H
Company:	EQT (Chevron Data) 02-13-21	TVD Reference:	H14 @ 1287.000usft (H14)
Project:	Marshall County, WV Chevron	MD Reference:	H14 @ 1287.000usft (H14)
Site:	Longworth	North Reference:	True
Well:	M03H	Survey Calculation Method:	Minimum Curvature
Wellbore:	OH		
Design:	Longworth 3H As-Drilled		

Project Marshall County, WV Chevron

Map System:	US State Plane 1983	System Datum:	Mean Sea Level
Geo Datum:	North American Datum 1983		
Map Zone:	West Virginia Northern Zone		

Site Longworth

Site Position:		Northing:	493,086.404 usft	Latitude:	39.85
From:	Map	Easting:	1,624,022.636 usft	Longitude:	-80.73
Position Uncertainty:	0.000 usft	Slot Radius:	13-3/16 "	Grid Convergence:	-0.7825 °

Well M03H

Well Position	+N/-S	0.000 usft	Northing:	493,066.610 usft	Latitude:	39.8472593
	+E/-W	0.000 usft	Easting:	1,624,092.180 usft	Longitude:	80.7266853°W
Position Uncertainty		0.000 usft	Wellhead Elevation:	0.000 usft	Ground Level:	1,270.000 usft

Wellbore OH

Magnetics	Model Name	Sample Date	Declination (°)	Dip Angle (°)	Field Strength (nT)
	User Defined	5/16/2016	-8.7190	67.0777	52,269.30909846

Design Longworth 3H As-Drilled

Audit Notes:

Version:	1.0	Phase:	ACTUAL	Tie On Depth:	0.000
Vertical Section:		Depth From (TVD) (usft)	+N/-S (usft)	+E/-W (usft)	Direction (°)
		0.000	0.000	0.000	328.261

Survey Program Date 7/20/2021

From (')	To (usft)	Survey (Wellbore)	Tool Name	Description
0.00	600.000	Surface Gyro (OH)	SDI Standard Keeper 103 c	SDI Standard Wireline Keeper ver 1.0.3 c
0.00	5,500.000	Gyro to KOP (OH)	SDI Standard Keeper 103 c	SDI Standard Wireline Keeper ver 1.0.3 c
0.00	11,562.000	BHI ATC (OH)	09_MWD+IFR1 c	A005Mb: IFR declination correction only c

Survey

Measured Depth (usft)	Inclination (°)	Azimuth (°)	Vertical Depth (usft)	Subsea Depth (usft)	+N/-S (usft)	+E/-W (usft)	Vertical Section (usft)	Dogleg Rate (°/100usft)	Build Rate (°/100usft)	Turn Rate (°/100usft)
0.000	0.000	0.000	0.000	-1,287.000	0.000	0.000	0.000	0.00000	0.00000	0.00000
100.000	0.200	189.240	100.000	-1,187.000	-0.172	-0.028	-0.132	0.20000	0.20000	0.00000
125.000	0.230	186.830	125.000	-1,162.000	-0.265	-0.041	-0.204	0.12531	0.12000	-9.64000
150.000	0.210	133.720	149.999	-1,137.000	-0.347	-0.014	-0.288	0.79007	-0.08000	-212.44000
175.000	0.270	141.710	174.999	-1,112.001	-0.425	0.056	-0.390	0.27425	0.24000	31.96000
200.000	0.280	148.800	199.999	-1,087.001	-0.523	0.124	-0.510	0.14177	0.04000	28.36000



EQT
Survey Report

Database:	EDM_Definitive	Local Co-ordinate Reference:	Well M03H
Company:	EQT (Chevron-Data) 02-13-21	TVD Reference:	H14 @ 1287.000usft (H14)
Project:	Marshall County, WV Chevron	MD Reference:	H14 @ 1287.000usft (H14)
Site:	Longworth	North Reference:	True
Well:	M03H	Survey Calculation Method:	Minimum Curvature
Wellbore:	OH		
Design:	Longworth 3H As-Drilled		

Survey											
Measured Depth (usft)	Inclination (°)	Azimuth (°)	Vertical Depth (usft)	Subsea Depth (usft)	+N/-S (usft)	+E/-W (usft)	Vertical Section (usft)	Dogleg Rate (°/100usft)	Build Rate (°/100usft)	Turn Rate (°/100usft)	
225.000	0.240	123.920	224.999	-1,062.001	-0.604	0.199	-0.619	0.47453	-0.16000	-99.52000	
250.000	0.100	90.950	249.999	-1,037.001	-0.634	0.264	-0.678	0.66127	-0.56000	-131.88000	
275.000	0.060	112.700	274.999	-1,012.001	-0.639	0.298	-0.701	0.19816	-0.16000	87.00000	
300.000	0.350	102.360	299.998	-987.002	-0.661	0.385	-0.764	1.16469	1.16000	-41.36000	
325.000	0.570	90.070	324.998	-962.002	-0.677	0.584	-0.883	0.95953	0.88000	-49.16000	
350.000	0.490	93.720	349.996	-937.003	-0.684	0.815	-1.011	0.34717	-0.32000	14.60000	
375.000	0.330	117.250	374.996	-912.004	-0.724	0.985	-1.134	0.91643	-0.64000	94.12000	
400.000	0.370	130.560	399.995	-887.005	-0.810	1.111	-1.273	0.36132	0.16000	53.24000	
425.000	0.340	110.900	424.995	-862.005	-0.889	1.241	-1.409	0.49907	-0.12000	-78.64000	
450.000	0.400	92.750	449.994	-837.006	-0.919	1.398	-1.517	0.52358	0.24000	-72.60000	
475.000	0.410	83.010	474.994	-812.006	-0.913	1.574	-1.604	0.27793	0.04000	-38.96000	
500.000	0.410	89.240	499.993	-787.007	-0.901	1.752	-1.688	0.17823	0.00000	24.92000	
525.000	0.510	106.140	524.992	-762.008	-0.930	1.948	-1.816	0.67005	0.40000	67.60000	
550.000	0.520	106.230	549.991	-737.009	-0.993	2.164	-1.983	0.04013	0.04000	0.36000	
575.000	0.430	99.330	574.990	-712.009	-1.040	2.366	-2.129	0.42594	-0.36000	-27.60000	
600.000	0.540	102.250	599.990	-687.010	-1.080	2.573	-2.272	0.45083	0.44000	11.68000	
625.000	0.640	89.380	624.988	-662.012	-1.104	2.828	-2.426	0.66168	0.40000	-51.48000	
650.000	0.700	78.300	649.987	-637.013	-1.071	3.117	-2.551	0.56992	0.24000	-44.32000	
675.000	0.780	66.760	674.984	-612.015	-0.973	3.423	-2.628	0.67496	0.32000	-46.16000	
700.000	0.980	62.240	699.982	-587.018	-0.806	3.769	-2.668	0.84621	0.80000	-18.08000	
725.000	0.970	69.210	724.978	-562.022	-0.632	4.156	-2.723	0.47580	-0.04000	27.88000	
750.000	1.060	78.950	749.974	-537.026	-0.512	4.580	-2.845	0.77706	0.36000	38.96000	
775.000	1.140	71.600	774.969	-512.031	-0.389	5.043	-2.984	0.64815	0.32000	-29.40000	
800.000	1.100	72.940	799.965	-487.035	-0.240	5.509	-3.102	0.19124	-0.16000	5.36000	
825.000	0.950	76.170	824.961	-462.039	-0.121	5.939	-3.227	0.64274	-0.60000	12.92000	
850.000	1.060	68.110	849.957	-437.043	0.015	6.355	-3.330	0.71546	0.44000	-32.24000	
875.000	1.160	76.970	874.952	-412.048	0.158	6.816	-3.451	0.79338	0.40000	35.44000	
900.000	1.170	74.490	899.947	-387.053	0.284	7.309	-3.603	0.20560	0.04000	-9.92000	
925.000	0.990	68.880	924.942	-362.057	0.430	7.756	-3.715	0.83421	-0.72000	-22.44000	
950.000	0.630	63.560	949.940	-337.060	0.569	8.081	-3.767	1.46955	-1.44000	-21.28000	
975.000	0.400	73.400	974.939	-312.061	0.655	8.288	-3.803	0.98236	-0.92000	39.36000	
1,000.000	0.510	78.840	999.938	-287.062	0.701	8.480	-3.865	0.47223	0.44000	21.76000	
1,025.000	0.600	82.870	1,024.937	-262.063	0.739	8.719	-3.958	0.39219	0.36000	16.12000	
1,050.000	0.610	83.340	1,049.936	-237.064	0.771	8.981	-4.069	0.04465	0.04000	1.88000	
1,075.000	0.630	80.600	1,074.934	-212.066	0.809	9.249	-4.178	0.14303	0.08000	-10.96000	
1,100.000	0.580	78.980	1,099.933	-187.067	0.855	9.509	-4.275	0.21136	-0.20000	-6.48000	
1,125.000	0.640	81.180	1,124.931	-162.069	0.901	9.771	-4.374	0.25759	0.24000	8.80000	
1,150.000	0.840	63.980	1,149.929	-137.071	1.003	10.074	-4.446	1.18715	0.80000	-68.80000	
1,175.000	0.830	66.540	1,174.927	-112.073	1.155	10.405	-4.491	0.15448	-0.04000	10.24000	
1,200.000	0.810	69.390	1,199.924	-87.076	1.290	10.736	-4.551	0.18168	-0.08000	11.40000	
1,225.000	0.870	65.730	1,224.921	-62.079	1.430	11.075	-4.610	0.32185	0.24000	-14.64000	
1,250.000	0.830	67.540	1,249.919	-37.081	1.577	11.415	-4.664	0.19269	-0.16000	7.24000	



EQT
Survey Report

Database:	EDM_Definitiva	Local Co-ordinate Reference:	Well M03H
Company:	EQT (Chevron Data) 02-13-21	TVD Reference:	H14 @ 1287.000usft (H14)
Project:	Marshall County, WV Chevron	MD Reference:	H14 @ 1287.000usft (H14)
Site:	Longworth	North Reference:	True
Well:	M03H	Survey Calculation Method:	Minimum Curvature
Wellbore:	OH		
Design:	Longworth 3H As-Drilled		

Measured Depth (usft)	Inclination (°)	Azimuth (°)	Vertical Depth (usft)	Subsea Depth (usft)	+N/-S (usft)	+E/-W (usft)	Vertical Section (usft)	Dogleg Rate (°/100usft)	Build Rate (°/100usft)	Turn Rate (°/100usft)
1,275.000	0.890	72.700	1,274.916	-12.084	1.704	11.768	-4.741	0.39165	0.24000	20.64000
1,300.000	0.970	74.020	1,299.912	12.913	1.820	12.156	-4.847	0.33126	0.32000	5.28000
1,325.000	0.760	85.380	1,324.910	37.910	1.892	12.525	-4.980	1.08061	-0.84000	45.44000
1,350.000	0.420	116.010	1,349.908	62.908	1.865	12.773	-5.133	1.80962	-1.36000	122.52000
1,375.000	0.690	200.180	1,374.907	87.907	1.683	12.803	-5.304	3.08186	1.08000	336.68000
1,400.000	1.290	217.820	1,399.904	112.904	1.320	12.579	-5.495	2.66443	2.40000	70.56000
1,425.000	1.800	225.500	1,424.894	137.895	0.822	12.126	-5.680	2.19726	2.04000	30.72000
1,450.000	2.300	227.980	1,449.878	162.878	0.211	11.473	-5.856	2.03077	2.00000	9.92000
1,475.000	2.870	232.210	1,474.853	187.853	-0.508	10.606	-6.011	2.40279	2.28000	16.92000
1,500.000	3.100	235.530	1,499.819	212.819	-1.274	9.554	-6.110	1.15056	0.92000	13.28000
1,525.000	3.280	235.120	1,524.780	237.780	-2.066	8.410	-6.181	0.72576	0.72000	-1.64000
1,550.000	3.630	237.940	1,549.735	262.735	-2.895	7.153	-6.225	1.55590	1.40000	11.28000
1,575.000	4.240	243.220	1,574.676	287.676	-3.731	5.657	-6.149	2.83552	2.44000	21.12000
1,600.000	4.580	243.240	1,599.602	312.602	-4.597	3.941	-5.983	1.36001	1.36000	0.08000
1,625.000	4.820	245.860	1,624.518	337.518	-5.476	2.091	-5.757	1.28778	0.96000	10.48000
1,650.000	5.010	245.790	1,649.426	362.426	-6.353	0.137	-5.475	0.76038	0.76000	-0.28000
1,675.000	5.340	246.500	1,674.324	387.324	-7.265	-1.926	-5.166	1.34460	1.32000	2.84000
1,700.000	5.610	245.020	1,699.210	412.210	-8.245	-4.100	-4.855	1.21870	1.08000	-5.92000
1,725.000	5.870	245.640	1,724.084	437.084	-9.288	-6.372	-4.547	1.06915	1.04000	2.48000
1,750.000	5.970	244.710	1,748.951	461.951	-10.371	-8.712	-4.237	0.55425	0.40000	-3.72000
1,775.000	6.050	244.620	1,773.814	486.814	-11.491	-11.078	-3.945	0.32221	0.32000	-0.36000
1,800.000	6.260	243.890	1,798.670	511.670	-12.656	-13.492	-3.665	0.89643	0.84000	-2.92000
1,825.000	6.200	243.780	1,823.522	536.522	-13.852	-15.927	-3.402	0.24470	-0.24000	-0.44000
1,850.000	5.610	242.990	1,848.389	561.389	-15.003	-18.227	-3.171	2.38223	-2.36000	-3.16000
1,875.000	4.560	238.020	1,873.290	586.291	-16.085	-20.159	-3.075	4.55081	-4.20000	-19.88000
1,900.000	4.090	234.440	1,898.219	611.219	-17.129	-21.727	-3.138	2.16722	-1.88000	-14.32000
1,925.000	3.880	230.520	1,923.159	636.159	-18.186	-23.105	-3.311	1.37540	-0.84000	-15.68000
1,950.000	3.580	227.760	1,948.106	661.106	-19.248	-24.336	-3.568	1.39817	-1.20000	-11.04000
1,975.000	3.450	223.830	1,973.059	686.059	-20.316	-25.435	-3.897	1.09481	-0.52000	-15.72000
2,000.000	3.480	224.200	1,998.013	711.013	-21.402	-26.485	-4.269	0.14967	0.12000	1.48000
2,025.000	3.670	224.590	2,022.965	735.965	-22.516	-27.575	-4.643	0.76620	0.76000	1.56000
2,050.000	3.840	223.600	2,047.911	760.911	-23.692	-28.714	-5.044	0.72775	0.68000	-3.96000
2,075.000	3.820	221.340	2,072.855	785.855	-24.923	-29.842	-5.498	0.60907	-0.08000	-9.04000
2,100.000	3.330	222.420	2,097.806	810.806	-26.085	-30.882	-5.938	1.97834	-1.96000	4.32000
2,125.000	2.600	224.540	2,122.773	835.773	-27.025	-31.769	-6.271	2.95226	-2.92000	8.48000
2,150.000	1.990	225.140	2,147.752	860.753	-27.735	-32.475	-6.504	2.44186	-2.44000	2.40000
2,175.000	1.690	228.260	2,172.740	885.740	-28.287	-33.057	-6.667	1.26470	-1.20000	12.48000
2,200.000	1.710	217.200	2,197.729	910.729	-28.829	-33.558	-6.865	1.31282	0.08000	-44.24000
2,225.000	1.180	230.390	2,222.721	935.721	-29.291	-33.982	-7.034	2.48947	-2.12000	52.76000
2,250.000	1.770	225.850	2,247.712	960.712	-29.724	-34.457	-7.152	2.40401	2.36000	-18.16000
2,275.000	1.200	221.410	2,272.704	985.704	-30.189	-34.907	-7.311	2.32429	-2.28000	-17.76000
2,300.000	1.160	221.970	2,297.698	1,010.699	-30.573	-35.250	-7.458	0.16652	-0.16000	2.24000



EQT
Survey Report

Database:	EDM_Definitive	Local Co-ordinate Reference:	Well M03H
Company:	EQT (Chevron Data) 02-13-21	TVD Reference:	H14 @ 1287.000usft (H14)
Project:	Marshall County, WV Chevron	MD Reference:	H14 @ 1287.000usft (H14)
Site:	Longworth	North Reference:	True
Well:	M03H	Survey Calculation Method:	Minimum Curvature
Wellbore:	OH		
Design:	Longworth 3H As-Drilled		

Survey

Measured Depth (usft)	Inclination (°)	Azimuth (°)	Vertical Depth (usft)	Subsea Depth (usft)	+N/-S (usft)	+E/-W (usft)	Vertical Section (usft)	Dogleg Rate (°/100usft)	Build Rate (°/100usft)	Turn Rate (°/100usft)
2,325.000	1.290	231.580	2,322.693	1,035.693	-30.936	-35.639	-7.562	0.97071	0.52000	38.44000
2,350.000	1.370	226.400	2,347.686	1,060.686	-31.317	-36.076	-7.656	0.57734	0.32000	-20.72000
2,375.000	0.160	93.800	2,372.684	1,085.684	-31.526	-36.258	-7.738	5.93193	-4.84000	-530.40000
2,400.000	1.480	52.140	2,397.681	1,110.681	-31.330	-35.968	-7.724	5.45845	5.28000	0
2,425.000	2.900	51.710	2,422.662	1,135.662	-30.740	-35.217	-7.617	5.68034	5.68000	0
2,450.000	3.070	50.050	2,447.628	1,160.628	-29.918	-34.207	-7.449	0.76279	0.68000	-1.72000
2,475.000	2.970	47.350	2,472.593	1,185.593	-29.050	-33.218	-7.231	0.69542	-0.40000	-6.64000
2,500.000	2.820	46.130	2,497.561	1,210.561	-28.185	-32.298	-6.979	0.64862	-0.60000	-10.80000
2,525.000	2.720	41.580	2,522.532	1,235.532	-27.315	-31.461	-6.680	0.96589	-0.40000	-4.88000
2,550.000	2.610	39.990	2,547.505	1,260.505	-26.435	-30.702	-6.331	0.53010	-0.44000	-18.20000
2,575.000	2.560	39.350	2,572.480	1,285.480	-25.567	-29.982	-5.972	0.23093	-0.20000	-6.36000
2,600.000	2.480	39.200	2,597.456	1,310.456	-24.716	-29.286	-5.614	0.32109	-0.32000	-2.56000
2,625.000	2.370	36.170	2,622.433	1,335.433	-23.880	-28.639	-5.243	0.67556	-0.44000	-0.60000
2,650.000	2.500	33.070	2,647.411	1,360.411	-23.005	-28.036	-4.816	0.74005	0.52000	-12.12000
2,675.000	2.430	31.760	2,672.387	1,385.387	-22.098	-27.460	-4.348	0.35941	-0.28000	-12.40000
2,700.000	2.330	29.000	2,697.366	1,410.366	-21.203	-26.935	-3.863	0.60832	-0.40000	-5.24000
2,725.000	2.270	26.870	2,722.346	1,435.346	-20.317	-26.464	-3.357	0.41771	-0.24000	-11.04000
2,750.000	2.070	25.100	2,747.328	1,460.328	-19.466	-26.049	-2.852	0.84363	-0.80000	-8.52000
2,775.000	1.820	24.840	2,772.313	1,485.313	-18.697	-25.691	-2.386	1.00062	-1.00000	-7.08000
2,800.000	1.840	17.280	2,797.301	1,510.301	-17.953	-25.405	-1.904	0.96828	0.08000	-1.04000
2,825.000	1.700	22.630	2,822.289	1,535.289	-17.228	-25.143	-1.425	0.86574	-0.56000	-30.24000
2,850.000	1.660	22.640	2,847.278	1,560.278	-16.551	-24.861	-0.998	0.16000	-0.16000	21.40000
2,875.000	1.720	23.330	2,872.267	1,585.267	-15.873	-24.573	-0.572	0.25342	0.24000	0.04000
2,900.000	2.630	29.330	2,897.249	1,610.249	-15.028	-24.143	-0.080	3.74730	3.64000	2.76000
2,925.000	3.760	28.370	2,922.210	1,635.210	-13.807	-23.473	0.606	4.52491	4.52000	24.00000
2,950.000	3.790	26.660	2,947.155	1,660.155	-12.347	-22.713	1.447	0.46603	0.12000	-3.84000
2,975.000	3.730	25.390	2,972.102	1,685.102	-10.874	-21.993	2.322	0.41057	-0.24000	-6.84000
3,000.000	3.630	22.390	2,997.050	1,710.050	-9.408	-21.343	3.227	0.86774	-0.40000	-5.08000
3,025.000	3.530	20.720	3,022.001	1,735.001	-7.956	-20.769	4.159	0.57787	-0.40000	-12.00000
3,050.000	3.690	26.580	3,046.952	1,759.952	-6.517	-20.137	5.051	1.60776	0.64000	-6.68000
3,075.000	4.810	35.320	3,071.883	1,784.883	-4.942	-19.171	5.882	5.16273	4.48000	23.44000
3,100.000	4.850	35.460	3,096.794	1,809.794	-3.226	-17.952	6.700	0.16680	0.16000	34.96000
3,125.000	4.680	34.630	3,121.708	1,834.708	-1.526	-16.759	7.518	0.73378	-0.68000	0.56000
3,150.000	4.620	33.180	3,146.625	1,859.625	0.156	-15.629	8.354	0.52789	-0.24000	-3.32000
3,175.000	4.490	32.730	3,171.546	1,884.546	1.822	-14.549	9.203	0.53929	-0.52000	-5.80000
3,200.000	4.410	31.180	3,196.471	1,909.471	3.467	-13.522	10.062	0.57774	-0.32000	-1.80000
3,225.000	4.240	29.870	3,221.400	1,934.400	5.091	-12.564	10.939	0.78644	-0.68000	-6.20000
3,250.000	4.130	29.630	3,246.333	1,959.333	6.675	-11.659	11.810	0.44554	-0.44000	-5.24000
3,275.000	3.860	28.750	3,271.272	1,984.272	8.195	-10.809	12.656	1.10746	-1.08000	-0.96000
3,300.000	3.720	26.190	3,296.218	2,009.218	9.661	-10.046	13.501	0.87836	-0.56000	-3.52000
3,325.000	3.710	26.080	3,321.165	2,034.165	11.115	-9.333	14.362	0.04912	-0.04000	-10.24000
3,350.000	3.680	25.910	3,346.113	2,059.113	12.563	-8.626	15.222	0.12775	-0.12000	-0.44000



EQT
Survey Report

Database:	EDM_Definitive	Local Co-ordinate Reference:	Well M03H
Company:	EQT (Chevron Data) 02-13-21	TVD Reference:	H14 @ 1287.000usft (H14)
Project:	Marshall County, WV Chevron	MD Reference:	H14 @ 1287.000usft (H14)
Site:	Longworth	North Reference:	True
Well:	M03H	Survey Calculation Method:	Minimum Curvature
Wellbore:	OH		
Design:	Longworth 3H As-Drilled		

Measured Depth (usft)	Inclination (°)	Azimuth (°)	Vertical Depth (usft)	Subsea Depth (usft)	+N/-S (usft)	+E/-W (usft)	Vertical Section (usft)	Dogleg Rate (°/100usft)	Build Rate (°/100usft)	Turn Rate (°/100usft)
3,375.000	4.860	27.520	3,371.043	2,084.043	14.224	-7.786	16.193	4.74383	4.72000	6.44000
3,400.000	6.110	35.000	3,395.929	2,108.929	16.253	-6.534	17.260	5.74994	5.00000	29.92000
3,425.000	7.340	38.840	3,420.756	2,133.756	18.587	-4.769	18.316	5.23581	4.92000	15.36000
3,450.000	7.170	38.510	3,445.556	2,158.556	21.052	-2.796	19.374	0.70013	-0.68000	-1.32000
3,475.000	8.630	44.640	3,470.319	2,183.319	23.607	-0.507	20.343	6.73473	5.84000	24.52000
3,500.000	8.690	46.910	3,495.034	2,208.034	26.232	2.190	21.157	1.38799	0.24000	9.08000
3,525.000	8.630	45.660	3,519.749	2,232.749	28.833	4.911	21.938	0.79016	-0.24000	-5.00000
3,550.000	8.360	43.470	3,544.475	2,257.475	31.463	7.503	22.811	1.68534	-1.08000	-8.76000
3,575.000	8.140	40.770	3,569.216	2,282.216	34.123	9.909	23.807	1.78190	-0.88000	-10.80000
3,600.000	9.440	38.530	3,593.922	2,306.922	37.067	12.342	25.031	5.37627	5.20000	-8.96000
3,625.000	9.490	37.000	3,618.582	2,331.582	40.317	14.860	26.471	1.02605	0.20000	-6.12000
3,650.000	10.450	37.870	3,643.204	2,356.204	43.752	17.492	28.008	3.88687	3.84000	3.48000
3,675.000	11.000	39.090	3,667.767	2,380.767	47.393	20.387	29.581	2.37995	2.20000	4.88000
3,700.000	10.560	37.920	3,692.326	2,405.326	51.052	23.299	31.161	1.96557	-1.76000	-4.68000
3,725.000	10.140	36.470	3,716.919	2,429.919	54.629	26.015	32.774	1.97680	-1.68000	-5.80000
3,750.000	9.620	34.820	3,741.548	2,454.548	58.113	28.516	34.422	2.36810	-2.08000	-6.60000
3,775.000	9.270	33.650	3,766.209	2,479.209	61.504	30.825	36.091	1.59674	-1.40000	-4.68000
3,800.000	8.800	31.800	3,790.899	2,503.899	64.806	32.948	37.782	2.20993	-1.88000	-7.40000
3,825.000	8.420	30.390	3,815.617	2,528.617	68.010	34.882	39.490	1.73866	-1.52000	-5.64000
3,850.000	8.120	29.130	3,840.357	2,553.357	71.131	36.667	41.205	1.40191	-1.20000	-5.04000
3,875.000	7.830	28.750	3,865.115	2,578.116	74.167	38.346	42.903	1.17901	-1.16000	-1.52000
3,900.000	8.140	26.850	3,889.873	2,602.873	77.239	39.964	44.665	1.62840	1.24000	-7.60000
3,925.000	9.260	29.940	3,914.585	2,627.585	80.561	41.768	46.541	4.85289	4.48000	12.36000
3,950.000	10.740	29.410	3,939.205	2,652.205	84.333	43.915	48.620	5.93137	5.92000	-2.12000
3,975.000	11.380	29.470	3,963.740	2,676.740	88.510	46.273	50.932	2.56041	2.56000	0.24000
4,000.000	11.210	28.930	3,988.256	2,701.256	92.784	48.662	53.310	0.80085	-0.68000	-2.16000
4,025.000	10.780	26.900	4,012.797	2,725.797	96.996	50.895	55.717	2.31423	-1.72000	-8.12000
4,050.000	10.300	24.930	4,037.375	2,750.375	101.108	52.895	58.162	2.40059	-1.92000	-7.88000
4,075.000	9.920	22.880	4,061.987	2,774.987	105.118	54.674	60.637	2.09317	-1.52000	-8.20000
4,100.000	9.580	22.450	4,086.626	2,799.626	109.025	56.306	63.101	1.39083	-1.36000	-1.72000
4,125.000	10.210	26.670	4,111.254	2,824.254	112.928	58.095	65.479	3.84089	2.52000	16.88000
4,150.000	9.860	26.780	4,135.872	2,848.872	116.819	60.054	67.757	1.40210	-1.40000	0.44000
4,175.000	9.550	32.370	4,160.515	2,873.515	120.481	62.129	69.781	3.96624	-1.24000	22.36000
4,200.000	9.220	32.500	4,185.180	2,898.180	123.922	64.315	71.557	1.32272	-1.32000	0.52000
4,225.000	9.140	32.480	4,209.860	2,922.860	127.286	66.457	73.291	0.32025	-0.32000	-0.08000
4,250.000	10.100	38.810	4,234.509	2,947.509	130.670	68.898	74.885	5.70856	3.84000	25.32000
4,275.000	11.270	39.430	4,259.075	2,972.075	134.265	71.823	76.403	4.70247	4.68000	2.48000
4,300.000	12.470	39.660	4,283.540	2,996.540	138.230	75.098	78.053	4.80372	4.80000	0.92000
4,325.000	13.170	45.060	4,307.917	3,020.917	142.320	78.836	79.564	5.54779	2.80000	21.60000
4,350.000	12.990	45.010	4,332.269	3,045.269	146.318	82.840	80.858	0.72142	-0.72000	-0.20000
4,375.000	12.580	44.150	4,356.649	3,069.649	150.258	86.723	82.166	1.80802	-1.64000	-3.44000
4,400.000	12.280	42.240	4,381.063	3,094.063	154.179	90.407	83.564	2.03561	-1.20000	-7.64000
4,425.000	11.800	40.960	4,405.513	3,118.513	158.078	93.870	85.058	2.19694	-1.92000	-5.12000



EQT
Survey Report

Database:	EDM_Definitive	Local Co-ordinate Reference:	Well M03H
Company:	EQT (Chevron Data) 02-13-21	TVD Reference:	H14 @ 1287.000usft (H14)
Project:	Marshall County, WV Chevron	MD Reference:	H14 @ 1287.000usft (H14)
Site:	Longworth	North Reference:	True
Well:	M03H	Survey Calculation Method:	Minimum Curvature
Wellbore:	OH		
Design:	Longworth 3H As-Drilled		

Survey										
Measured Depth (usft)	Inclination (°)	Azimuth (°)	Vertical Depth (usft)	Subsea Depth (usft)	+N/-S (usft)	+E/-W (usft)	Vertical Section (usft)	Dogleg Rate (°/100usft)	Build Rate (°/100usft)	Turn Rate (°/100usft)
4,450.000	11.420	39.510	4,430.001	3,143.001	161.918	97.120	86.613	1.91636	-1.52000	-5.80000
4,475.000	11.130	38.320	4,454.519	3,167.519	165.721	100.191	88.232	1.48713	-1.16000	-4.76000
4,500.000	10.870	36.540	4,479.060	3,192.060	169.508	103.090	89.927	1.71081	-1.04000	-7.12000
4,525.000	11.940	36.400	4,503.566	3,216.566	173.483	106.029	91.763	4.28143	4.28000	-0.56000
4,550.000	12.990	38.850	4,527.976	3,240.976	177.753	109.326	93.660	4.70169	4.20000	9.80000
4,575.000	13.960	41.700	4,552.288	3,265.288	182.193	113.094	95.453	4.70114	3.88000	11.40000
4,600.000	13.660	41.180	4,576.565	3,289.565	186.666	117.044	97.180	1.29865	-1.20000	-2.08000
4,625.000	13.250	39.140	4,600.879	3,313.879	191.110	120.796	98.985	2.50867	-1.64000	-8.16000
4,650.000	12.830	37.440	4,625.234	3,338.234	195.536	124.292	100.910	2.27501	-1.68000	-6.80000
4,675.000	12.360	35.570	4,649.633	3,362.633	199.917	127.536	102.929	2.48871	-1.88000	-7.48000
4,700.000	12.050	34.760	4,674.068	3,387.068	204.237	130.580	105.002	1.41658	-1.24000	-3.24000
4,725.000	11.850	33.830	4,698.526	3,411.526	208.513	133.497	107.104	1.11051	-0.80000	-3.72000
4,750.000	12.840	37.920	4,722.948	3,435.948	212.837	136.634	109.131	5.28123	3.96000	16.36000
4,775.000	13.850	38.860	4,747.273	3,460.273	217.359	140.218	111.091	4.13203	4.04000	3.76000
4,800.000	14.280	44.730	4,771.524	3,484.525	221.879	144.266	112.806	5.95689	1.72000	23.48000
4,825.000	15.010	48.150	4,795.713	3,508.713	226.230	148.847	114.096	4.52531	2.92000	13.68000
4,850.000	14.880	47.010	4,819.867	3,532.867	230.578	153.607	115.291	1.28580	-0.52000	-4.56000
4,875.000	14.700	45.010	4,844.039	3,557.039	235.010	158.198	116.644	2.16529	-0.72000	-8.00000
4,900.000	14.380	43.210	4,868.238	3,581.238	239.515	162.567	118.177	2.21477	-1.28000	-7.20000
4,925.000	13.950	41.200	4,892.478	3,605.478	244.045	166.678	119.868	2.61309	-1.72000	-8.04000
4,950.000	13.580	39.590	4,916.760	3,629.760	248.574	170.533	121.691	2.13023	-1.48000	-6.44000
4,975.000	13.190	38.740	4,941.081	3,654.081	253.061	174.188	123.584	1.74727	-1.56000	-3.40000
5,000.000	12.890	37.030	4,965.436	3,678.437	257.512	177.653	125.547	1.95483	-1.20000	-6.84000
5,025.000	12.660	36.220	4,989.818	3,702.818	261.948	180.951	127.585	1.16603	-0.92000	-3.24000
5,050.000	12.270	34.660	5,014.228	3,727.228	266.343	184.080	129.676	2.06085	-1.56000	-6.24000
5,075.000	12.290	34.030	5,038.656	3,751.656	270.733	187.080	131.832	0.54191	0.08000	-2.52000
5,100.000	13.530	41.030	5,063.025	3,776.026	275.145	190.489	133.791	7.97504	4.96000	28.00000
5,125.000	14.650	45.520	5,087.274	3,800.274	279.566	194.665	135.354	6.25688	4.48000	17.96000
5,150.000	14.770	47.010	5,111.454	3,824.454	283.954	199.252	136.673	1.58765	0.48000	5.96000
5,175.000	14.670	46.370	5,135.634	3,848.634	288.312	203.874	137.947	0.76362	-0.40000	-2.56000
5,200.000	14.200	47.300	5,159.845	3,872.845	292.576	208.419	139.183	2.09621	-1.88000	3.72000
5,225.000	12.600	50.720	5,184.164	3,897.164	296.382	212.783	140.123	7.13953	-6.40000	13.68000
5,250.000	12.440	49.810	5,208.569	3,921.569	299.846	216.951	140.877	1.01598	-0.64000	-3.64000
5,275.000	12.420	49.270	5,232.983	3,945.983	303.338	221.045	141.693	0.47176	-0.08000	-2.16000
5,300.000	12.480	49.780	5,257.395	3,970.395	306.836	225.145	142.511	0.50102	0.24000	2.04000
5,325.000	11.490	51.830	5,281.850	3,994.850	310.119	229.165	143.189	4.30997	-3.96000	8.20000
5,350.000	11.160	50.980	5,306.363	4,019.363	313.181	233.003	143.774	1.47922	-1.32000	-3.40000
5,375.000	9.740	53.800	5,330.948	4,043.948	315.954	236.589	144.245	6.03559	-5.68000	11.28000
5,400.000	9.180	52.380	5,355.608	4,068.608	318.420	239.875	144.614	2.42659	-2.24000	-5.68000
5,425.000	9.090	52.180	5,380.291	4,093.291	320.848	243.015	145.028	0.38175	-0.36000	-0.80000
5,450.000	8.950	51.480	5,404.982	4,117.982	323.270	246.096	145.467	0.71154	-0.56000	-2.80000
5,475.000	8.930	51.710	5,429.678	4,142.678	325.683	249.141	145.917	0.16383	-0.08000	0.92000



EQT
Survey Report

Database:	EDM_Definitive	Local Co-ordinate Reference:	Well M03H
Company:	EQT (Chevron Data) 02-13-21	TVD Reference:	H14 @ 1287.000usft (H14)
Project:	Marshall County, WV Chevron	MD Reference:	H14 @ 1287.000usft (H14)
Site:	Longworth	North Reference:	True
Well:	M03H	Survey Calculation Method:	Minimum Curvature
Wellbore:	OH		
Design:	Longworth 3H As-Drilled		

Survey

Measured Depth (usft)	Inclination (°)	Azimuth (°)	Vertical Depth (usft)	Subsea Depth (usft)	+N/-S (usft)	+E/-W (usft)	Vertical Section (usft)	Dogleg Rate (°/100usft)	Build Rate (°/100usft)	Turn Rate (°/100usft)
5,500.000	8.830	49.880	5,454.379	4,167.379	328.122	252.131	146.419	1.19860	-0.40000	-7.32000
KOP=5508' MD/ 5482' TVD										
5,508.000	8.830	49.880	5,462.284	4,175.284	328.914	253.070	146.598	0.00000	0.00000	0.00000
5,526.000	8.650	48.570	5,480.075	4,193.075	330.700	255.141	147.027	1.49089	-1.00000	-7.27778
5,571.000	8.870	43.050	5,524.551	4,237.551	335.474	260.047	148.507	1.93025	0.48889	-12.26667
5,661.000	13.320	23.560	5,612.876	4,325.876	350.060	268.935	156.236	6.40073	4.94444	-21.65556
5,750.000	17.240	14.810	5,698.725	4,411.725	372.220	276.408	171.151	5.09830	4.40449	-9.83146
5,839.000	21.000	10.330	5,782.804	4,495.804	400.671	282.641	192.068	4.53213	4.22472	-5.03371
5,929.000	25.790	5.030	5,865.391	4,578.391	436.064	287.253	219.742	5.80828	5.32222	-5.88889
6,018.000	30.460	357.320	5,943.886	4,656.886	477.921	287.896	255.001	6.63955	5.24719	-8.66292
6,107.000	34.850	348.410	6,018.844	4,731.844	525.416	281.726	298.639	7.30413	4.93258	-10.01124
6,197.000	39.190	344.000	6,090.698	4,803.698	577.975	268.713	350.183	5.65057	4.82222	-4.90000
6,286.000	44.660	340.640	6,156.899	4,869.899	634.565	250.578	407.851	6.64178	6.14607	-3.77528
6,376.000	50.110	338.110	6,217.817	4,930.817	696.497	227.200	472.819	6.39826	6.05556	-2.81111
6,465.000	49.910	335.120	6,275.021	4,988.021	759.072	200.143	540.269	2.58361	-0.22472	-3.35955
6,554.000	49.890	334.280	6,332.349	5,045.349	820.619	171.050	607.916	0.72230	-0.02247	-0.94382
6,644.000	52.140	335.050	6,388.966	5,101.966	883.847	141.124	677.432	2.58691	2.50000	0.85556
6,734.000	60.080	334.960	6,439.110	5,152.110	951.504	109.578	751.565	8.82261	8.82222	-0.10000
6,823.000	67.710	331.830	6,478.250	5,191.250	1,022.866	73.756	831.100	9.13480	8.57303	-3.51685
Top of Marcellus@6514' TVD										
6,871.877	71.085	329.959	6,495.448	5,208.448	1,062.828	51.499	876.794	7.77960	6.90604	-3.82726
6,912.000	73.870	328.480	6,507.527	5,220.528	1,095.693	31.918	915.045	7.77960	6.94000	-3.68703
M03H LP1										
6,932.657	75.185	328.485	6,513.038	5,226.038	1,112.665	21.511	934.953	6.36670	6.36667	0.02264
7,002.000	79.600	328.500	6,528.170	5,241.170	1,170.345	-13.846	1,002.606	6.36670	6.36667	0.02210
M03H LP2										
7,087.522	84.885	328.481	6,539.710	5,252.710	1,242.564	-58.119	1,087.315	6.17982	6.17978	-0.02248
7,091.000	85.100	328.480	6,540.013	5,253.013	1,245.517	-59.930	1,090.779	6.17982	6.17978	-0.02223
LP=7181' MD/ 6544' TVD										
7,181.000	90.180	329.640	6,543.718	5,256.718	1,322.620	-106.146	1,180.663	5.78939	5.64444	1.28889
7,270.000	90.520	324.410	6,543.174	5,256.174	1,397.255	-154.568	1,269.610	5.88869	0.38202	-5.87640
7,360.000	89.540	316.480	6,543.127	5,256.127	1,466.590	-211.836	1,358.702	8.87803	-1.08889	-8.81111
7,449.000	89.970	317.850	6,543.507	5,256.507	1,531.853	-272.344	1,446.035	1.61335	0.48315	1.53933
7,538.000	90.120	317.020	6,543.437	5,256.438	1,597.401	-332.545	1,533.450	0.94769	0.16854	-0.93258
7,628.000	90.000	316.370	6,543.343	5,256.343	1,662.895	-394.274	1,621.622	0.73443	-0.13333	-0.72222
7,717.000	90.030	315.320	6,543.320	5,256.320	1,726.748	-456.271	1,708.539	1.18026	0.03371	-1.17978
7,807.000	90.090	313.300	6,543.226	5,256.226	1,789.613	-520.669	1,795.880	2.24543	0.06667	-2.24444
7,896.000	90.090	315.260	6,543.086	5,256.086	1,851.747	-584.384	1,882.239	2.20224	0.00000	2.20225
7,986.000	89.940	321.060	6,543.062	5,256.062	1,918.769	-644.393	1,970.806	6.44660	-0.16667	6.44444
8,075.000	89.850	321.740	6,543.225	5,256.225	1,988.324	-699.918	2,059.168	0.77071	-0.10112	0.76404
8,164.000	89.970	318.440	6,543.365	5,256.365	2,056.582	-757.011	2,147.252	3.71031	0.13483	-3.70787
8,254.000	89.780	316.980	6,543.562	5,256.562	2,123.147	-817.580	2,235.725	1.65794	-0.21111	-1.64444
8,343.000	90.000	318.370	6,543.732	5,256.733	2,188.936	-877.517	2,323.205	1.60343	0.24719	1.58427



EQT
Survey Report

Database:	EDM_Definitive	Local Co-ordinate Reference:	Well M03H
Company:	EQT (Chevron Data) 02-13-21	TVD Reference:	H14 @ 1287.000usft (H14)
Project:	Marshall County, WV Chevron	MD Reference:	H14 @ 1287.000usft (H14)
Site:	Longworth	North Reference:	True
Well:	M03H	Survey Calculation Method:	Minimum Curvature
Wellbore:	QH		
Design:	Longworth 3H As-Drilled		

Survey

Measured Depth (usft)	Inclination (°)	Azimuth (°)	Vertical Depth (usft)	Subsea Depth (usft)	+N/-S (usft)	+E/-W (usft)	Vertical Section (usft)	Dogleg Rate (°/100usft)	Build Rate (°/100usft)	Turn Rate (°/100usft)
Deepest Point of Well=8432' MD/ 6544' TVD										
8,432.000	89.660	322.890	6,543.997	5,256.997	2,257.720	-933.957	2,411.394	5.09297	-0.38202	5.07865
8,521.000	90.430	321.780	6,543.927	5,256.927	2,328.171	-988.338	2,499.916	1.51789	0.86517	-1.24719
8,611.000	90.310	321.900	6,543.346	5,256.346	2,398.935	-1,043.945	2,589.349	0.18856	-0.13333	0.13333
8,700.000	90.250	322.570	6,542.911	5,255.911	2,469.291	-1,098.449	2,677.856	0.75581	-0.06742	0.75281
8,789.000	90.830	325.190	6,542.072	5,255.072	2,541.174	-1,150.906	2,766.584	3.01495	0.65169	2.94382
8,879.000	90.800	328.020	6,540.791	5,253.791	2,616.300	-1,200.432	2,856.528	3.14430	-0.03333	3.14444
8,968.000	90.770	325.570	6,539.572	5,252.572	2,690.755	-1,249.164	2,945.484	2.75276	-0.03371	-2.75281
9,058.000	91.080	322.130	6,538.118	5,251.118	2,763.407	-1,302.240	3,035.192	3.83721	0.34444	-3.82222
9,147.000	90.860	321.110	6,536.612	5,249.612	2,833.164	-1,357.489	3,123.581	1.17226	-0.24719	-1.14607
9,237.000	90.710	326.240	6,535.378	5,248.378	2,905.643	-1,410.779	3,213.255	5.70190	-0.16667	5.70000
9,326.000	90.950	328.910	6,534.088	5,247.088	2,980.753	-1,458.491	3,302.231	3.01178	0.26966	3.00000
9,416.000	91.690	326.470	6,532.015	5,245.015	3,056.792	-1,506.579	3,392.195	2.83234	0.82222	-2.71111
9,506.000	90.860	324.170	6,530.012	5,243.012	3,130.778	-1,557.772	3,482.047	2.71625	-0.92222	-2.55556
9,595.000	90.710	320.970	6,528.792	5,241.792	3,201.437	-1,611.853	3,570.589	3.59912	-0.16854	-3.59551
9,684.000	90.830	316.970	6,527.596	5,240.596	3,268.556	-1,670.261	3,658.395	4.49600	0.13483	-4.49438
9,774.000	90.800	317.430	6,526.316	5,239.316	3,334.585	-1,731.404	3,746.714	0.51215	-0.03333	0.51111
9,864.000	90.740	316.450	6,525.106	5,238.106	3,400.336	-1,792.846	3,834.954	1.09083	-0.06667	-1.08889
9,953.000	90.740	315.950	6,523.957	5,236.957	3,464.567	-1,854.442	3,921.982	0.56175	0.00000	-0.56180
10,042.000	90.770	320.190	6,522.783	5,235.783	3,530.759	-1,913.895	4,009.550	4.76375	0.03371	4.76405
10,132.000	90.680	316.180	6,521.644	5,234.644	3,597.817	-1,973.883	4,098.137	4.45632	-0.10000	-4.45556
10,221.000	90.830	311.920	6,520.471	5,233.471	3,659.677	-2,037.830	4,184.386	4.78907	0.16854	-4.78652
10,311.000	90.710	315.310	6,519.261	5,232.261	3,721.746	-2,102.974	4,271.441	3.76869	-0.13333	3.76667
10,400.000	90.770	319.140	6,518.111	5,231.111	3,787.056	-2,163.400	4,358.772	4.30354	0.06742	4.30337
10,489.000	90.800	320.610	6,516.892	5,229.892	3,855.101	-2,220.749	4,446.810	1.65187	0.03371	1.65169
10,579.000	90.740	321.060	6,515.682	5,228.682	3,924.874	-2,277.584	4,536.046	0.50438	-0.06667	0.50000
10,668.000	90.830	322.730	6,514.463	5,227.463	3,994.898	-2,332.499	4,624.486	1.87895	0.10112	1.87640
10,757.000	90.710	322.270	6,513.267	5,226.267	4,065.499	-2,386.674	4,713.028	0.53411	-0.13483	-0.51685
10,847.000	90.800	321.630	6,512.081	5,225.081	4,136.366	-2,442.140	4,802.475	0.71805	0.10000	-0.71111
10,936.000	90.770	320.220	6,510.861	5,223.862	4,205.450	-2,498.234	4,890.736	1.58448	-0.03371	-1.58427
11,025.000	90.800	320.230	6,509.642	5,222.642	4,273.846	-2,555.168	4,978.854	0.03553	0.03371	0.01124
11,115.000	90.710	320.810	6,508.456	5,221.456	4,343.305	-2,612.386	5,068.025	0.65210	-0.10000	0.64444
11,205.000	90.740	322.470	6,507.317	5,220.317	4,413.869	-2,668.233	5,157.415	1.84460	0.03333	1.84444
11,294.000	90.770	321.740	6,506.145	5,219.145	4,484.095	-2,722.893	5,245.893	0.82085	0.03371	-0.82022
11,384.000	90.770	319.470	6,504.935	5,217.935	4,553.636	-2,780.004	5,335.077	2.52199	0.00000	-2.52222
11,473.000	90.770	317.590	6,503.739	5,216.739	4,620.314	-2,838.935	5,422.785	2.11217	0.00000	-2.11236



EQT
Survey Report

Database:	EDM_Definitive	Local Co-ordinate Reference:	Well M03H:
Company:	EQT (Chevron Data) 02-13-21	TVD Reference:	H14 @ 1287.000usft (H14)
Project:	Marshall County, WV Chevron	MD Reference:	H14 @ 1287.000usft (H14)
Site:	Longworth	North Reference:	True
Well:	M03H	Survey Calculation Method:	Minimum Curvature
Wellbore:	OH		
Design:	Longworth 3H As-Drilled		

Measured Depth (usft)	Inclination (°)	Azimuth (°)	Vertical Depth (usft)	Subsea Depth (usft)	+N/-S (usft)	+E/-W (usft)	Vertical Section (usft)	Dogleg Rate (°/100usft)	Build Rate (°/100usft)	Turn Rate (°/100usft)
Final Survey=11537' MD/ 6503' TVD										
11,537.000	90.800	317.930	6,502.862	5,215.862	4,667.691	-2,881.954	5,485.707	0.53326	0.04688	0.53125
Projection to TD=11562' MD/ 6503' TVD - M03H BHL										
11,562.000	90.800	317.930	6,502.513	5,215.513	4,686.248	-2,898.703	5,510.299	0.00000	0.00000	0.00000

Target Name	- hit/miss target	- Shape	Dip Angle (°)	Dip Dir. (°)	TVD (usft)	+N/-S (328.914)	+E/-W (253.070)	Northing (usft)	Easting (usft)	Latitude	Longitude
Longworth 3H KOP			0.000	0.000	5,462.28	328.914	253.070	493,392.037	1,624,349.717	39.8481623	80.7257840°W
	- actual wellpath hits target center	- Point			4						
Longworth 3H BHL			0.000	0.000	6,502.51	4,686.247	-2,898.703	497,792.000	1,621,257.734	39.8601240	80.7370113°W
	- actual wellpath hits target center	- Point			3						
Longworth 3H LP			0.000	0.000	6,543.71	1,322.620	-106.146	494,390.555	1,624,004.103	39.8508903	80.7270634°W
	- actual wellpath hits target center	- Point			8						

Measured Depth (usft)	Vertical Depth (usft)	Name	Lithology	Dip (°)	Dip Direction (°)
6,871.877	6,514.000	Top of Marcellus@6514' TVD		-1.0000	

Measured Depth (usft)	Vertical Depth (usft)	Local Coordinates	Comment	
		+N/-S (usft)	+E/-W (usft)	
5,508.000	5,462.284	328.914	253.070	KOP=5508' MD/ 5462' TVD
7,181.000	6,543.718	1,322.620	-106.146	LP=7181' MD/ 6544' TVD
8,432.000	6,543.997	2,257.720	-933.957	Deepest Point of Well=8432' MD/ 6544' TVD
11,537.000	6,502.862	4,667.691	-2,881.954	Final Survey=11537' MD/ 6503' TVD
11,562.000	6,502.513	4,686.248	-2,898.703	Projection to TD=11562' MD/ 6503' TVD

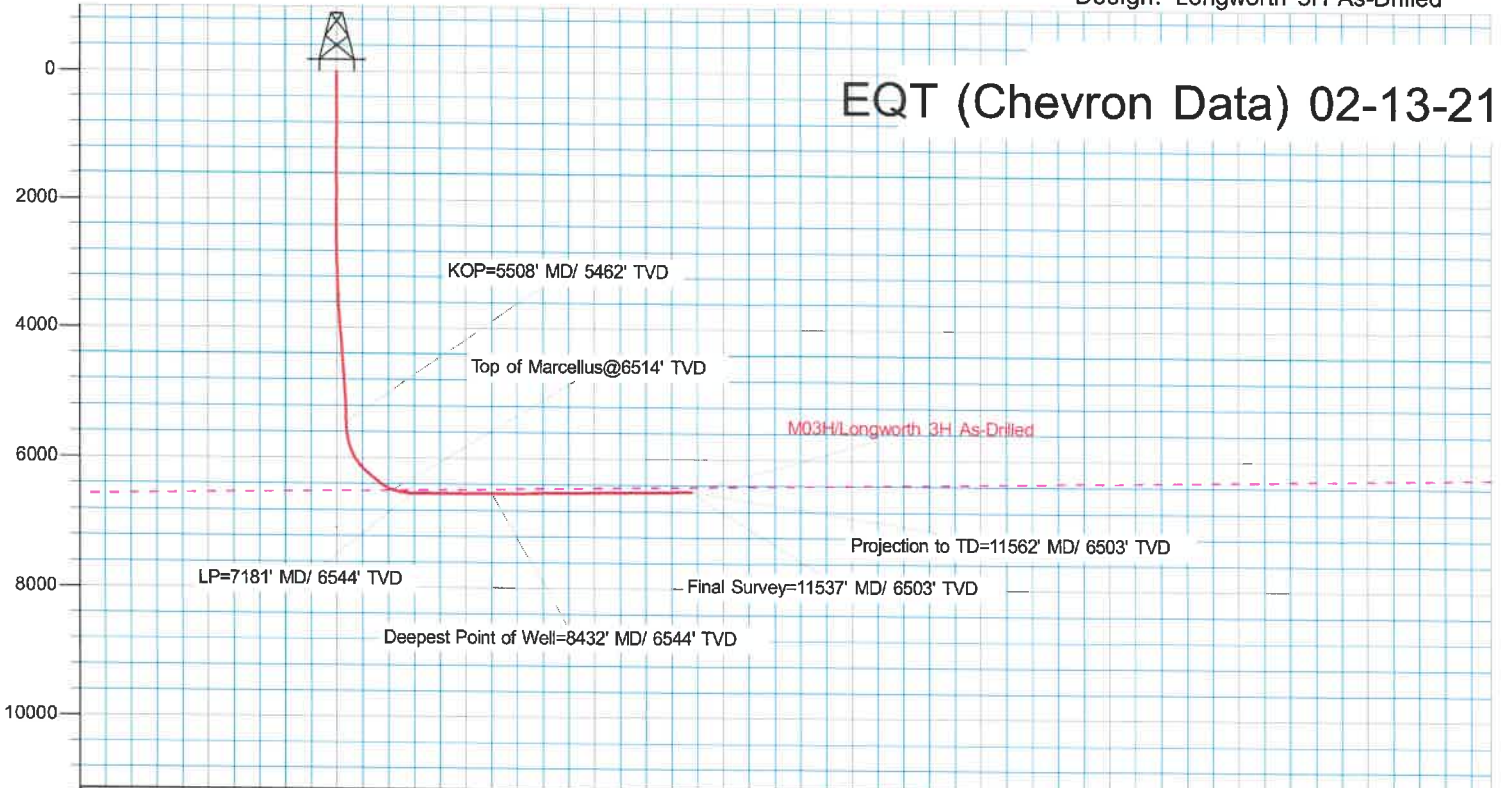
Checked By: _____ Approved By: _____ Date: _____



KB Elevation= H14 @ 1287.000ust (H14)
 Ground Elevation= 1270.000
 All measurements were taken from KB Elevation

Site: Longworth
 Well: M03H
 Wellbore: OH
 Design: Longworth 3H As-Drilled

EQT (Chevron Data) 02-13-21

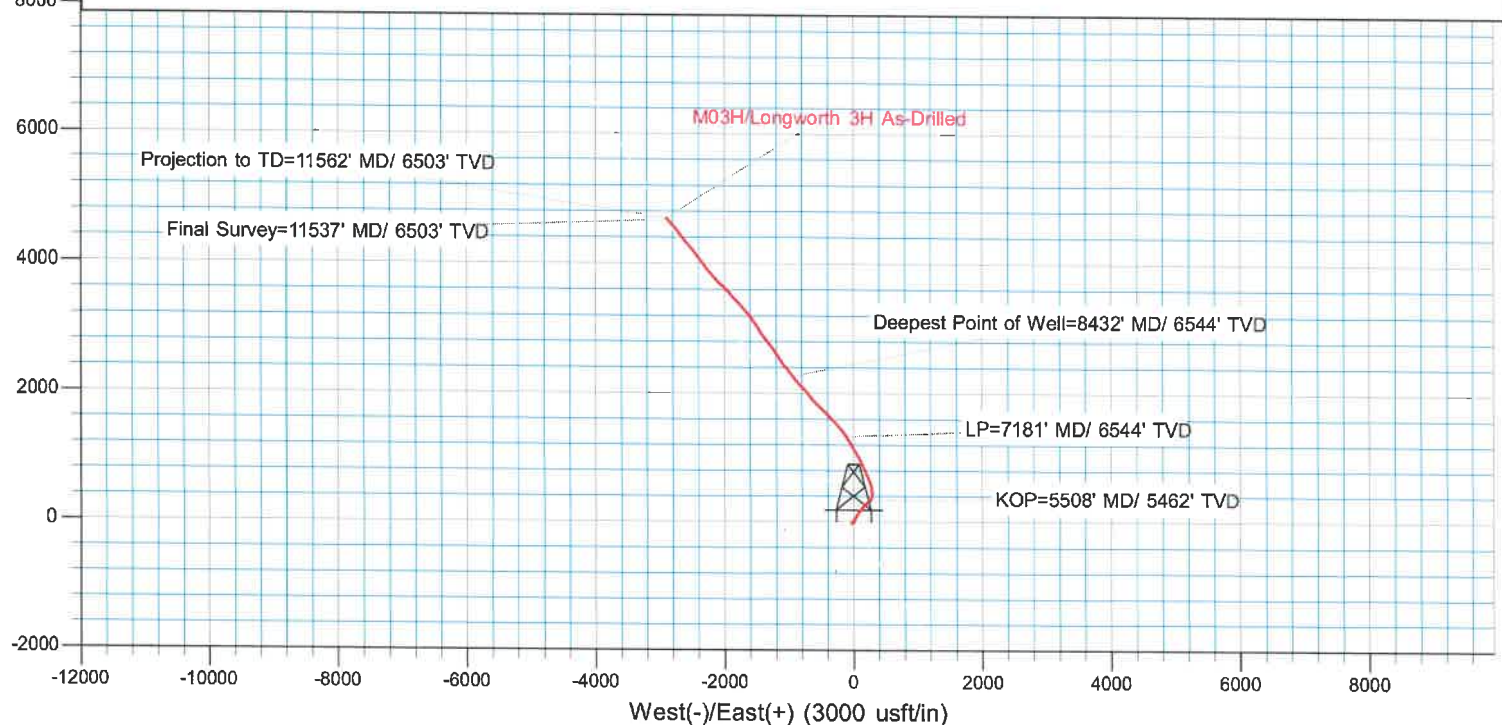


Surface Location: M03H

		Ground Level: 1270.000					
+N/-S	+E/-W	Northing	Easting	Latitude	Longitude	Slot	
0.000	0.000	493066.610	1624092.180	39.8472593	80.7266854°W		

DESIGN TARGET DETAILS

Name	TVD	Northing	Easting	Latitude	Longitude
Longworth 3H KOP	5462.284	493392.038	1624349.717	39.8481622	80.7257840°W
Longworth 3H BHL	6502.513	497792.000	1621257.734	39.8601240	80.7370113°W
Longworth 3H LP	6543.718	494390.556	1624004.103	39.8508903	80.7270634°W



09/09/2022