



# **EQT (Chevron Data) 02-13-21**

**Marshall County, WV Chevron**

**Longworth**

**M06H**

**OH**

**Design: Longworth 6H As-Drilled**

## **Standard Survey Report**

**26 July, 2021**

**RECEIVED**  
Office of Oil and Gas  
**NOV 18 2022**  
WV Department of  
Environmental Protection

**12/16/2022**



**EQT**  
Survey Report

Database:	EDM_Definitive	Local Co-ordinate Reference:	Well M06H
Company:	EQT (Chevron Data) 02-13-21	TVD Reference:	PD560 @ 1295.000usft (PD560)
Project:	Marshall County, WV Chevron	MD Reference:	PD560 @ 1295.000usft (PD560)
Site:	Longworth	North Reference:	True
Well:	M06H	Survey Calculation Method:	Minimum Curvature
Wellbore:	OH		
Design:	Longworth 6H As-Drilled		

**Project** Marshall County, WV Chevron

<b>Map System:</b>	US State Plane 1983	<b>System Datum:</b>	Mean Sea Level
<b>Geo Datum:</b>	North American Datum 1983		
<b>Map Zone:</b>	West Virginia Northern Zone		

**Site** Longworth

<b>Site Position:</b>		<b>Northing:</b>	493,086.404 usft	<b>Latitude:</b>	39.85
<b>From:</b>	Map	<b>Easting:</b>	1,624,022.636 usft	<b>Longitude:</b>	-80.73
<b>Position Uncertainty:</b>	0.000 usft	<b>Slot Radius:</b>	13-3/16 "	<b>Grid Convergence:</b>	-0.7825 °

**Well** M06H

<b>Well Position</b>	<b>+N/-S</b>	0.000 usft	<b>Northing:</b>	493,041.230 usft	<b>Latitude:</b>	39.8471910
	<b>+E/-W</b>	0.000 usft	<b>Easting:</b>	1,624,129.340 usft	<b>Longitude:</b>	80.7265518°W
<b>Position Uncertainty</b>		0.000 usft	<b>Wellhead Elevation:</b>	0.000 usft	<b>Ground Level:</b>	1,270.000 usft

**Wellbore** OH

Magnetics	Model Name	Sample Date	Declination (°)	Dip Angle (°)	Field Strength (nT)
	User Defined	5/16/2016	-8.7190	67.0777	52,269.25945349

**Design** Longworth 6H As-Drilled

**Audit Notes:**

RECEIVED  
Office of Oil and Gas  
NOV 18 2022

<b>Version:</b>	1.0	<b>Phase:</b>	ACTUAL	<b>Tie On Depth:</b>	0.000
<b>Vertical Section:</b>	<b>Depth From (TVD) (usft)</b>	<b>+N/-S (usft)</b>	<b>+E/-W (usft)</b>	<b>Direction (°)</b>	
	0.000	0.000	0.000	153.292	

**Survey Program** Date 7/26/2021

From (')	To (usft)	Survey (Wellbore)	Tool Name	Description
0.00	17,837.000	BHI ATC (OH)	09_MWD+IFR1 c	A005Mb: IFR declination correction only c

**Survey**

Measured Depth (usft)	Inclination (°)	Azimuth (°)	Vertical Depth (usft)	Subsea Depth (usft)	+N/-S (usft)	+E/-W (usft)	Vertical Section (usft)	Dogleg Rate (°/100usft)	Build Rate (°/100usft)	Turn Rate (°/100usft)
0.000	0.000	0.000	0.000	-1,295.000	0.000	0.000	0.000	0.00000	0.00000	0.00000
25.000	0.000	129.560	25.000	-1,270.000	0.000	0.000	0.000	0.00000	0.00000	0.00000
108.000	0.220	129.560	108.000	-1,187.000	-0.101	0.123	0.146	0.26506	0.26506	0.00000
133.000	0.130	129.370	133.000	-1,162.000	-0.150	0.182	0.216	0.36001	-0.36000	-0.76000
158.000	0.160	192.640	158.000	-1,137.000	-0.202	0.196	0.269	0.61695	0.12000	253.08000
183.000	0.080	263.900	183.000	-1,112.000	-0.238	0.171	0.290	0.61677	-0.32000	285.04000
208.000	0.070	250.310	208.000	-1,087.000	-0.245	0.139	0.281	0.08135	-0.04000	-54.36000
233.000	0.070	224.820	233.000	-1,062.000	-0.261	0.114	0.284	0.12354	0.00000	-101.96000
										0



**EQT**  
Survey Report

Database:	EDM_Definitive	Local Co-ordinate Reference:	Well M06H
Company:	EQT (Chevron Data) 02-13-21	TVD Reference:	PD560 @ 1295.000usft (PD560)
Project:	Marshall County, WV Chevron	MD Reference:	PD560 @ 1295.000usft (PD560)
Site:	Longworth	North Reference:	True
Well:	M06H	Survey Calculation Method:	Minimum Curvature
Wellbore:	OH		
Design:	Longworth 6H As-Drilled		

**Survey**

Measured Depth (usft)	Inclination (°)	Azimuth (°)	Vertical Depth (usft)	Subsea Depth (usft)	+N/-S (usft)	+E/-W (usft)	Vertical Section (usft)	Dogleg Rate (°/100usft)	Build Rate (°/100usft)	Turn Rate (°/100usft)
258.000	0.090	260.020	257.999	-1,037.000	-0.275	0.084	0.284	0.20800	0.08000	140.80000
283.000	0.140	315.200	282.999	-1,012.000	-0.257	0.043	0.249	0.46149	0.20000	220.72000
308.000	0.160	258.550	307.999	-987.001	-0.242	-0.012	0.211	0.57370	0.08000	-226.60000
333.000	0.310	221.890	332.999	-962.001	-0.299	-0.092	0.226	0.82095	0.60000	-146.64000
358.000	0.330	216.310	357.999	-937.001	-0.408	-0.180	0.284	0.14803	0.08000	-22.32000
383.000	0.430	214.230	382.998	-912.002	-0.543	-0.275	0.362	0.40372	0.40000	-8.32000
408.000	0.400	220.270	407.998	-887.002	-0.688	-0.384	0.442	0.21202	-0.12000	24.16000
433.000	0.320	225.680	432.997	-862.003	-0.803	-0.491	0.497	0.34734	-0.32000	21.64000
458.000	0.300	238.120	457.997	-837.003	-0.886	-0.596	0.524	0.28022	-0.08000	49.76000
483.000	0.350	208.450	482.996	-812.004	-0.988	-0.688	0.573	0.69320	0.20000	-118.68000
508.000	0.380	215.790	507.996	-787.004	-1.122	-0.773	0.655	0.22198	0.12000	29.36000
533.000	0.400	215.560	532.995	-762.005	-1.261	-0.872	0.734	0.08024	0.08000	-0.92000
558.000	0.380	220.340	557.995	-737.005	-1.395	-0.977	0.807	0.15270	-0.08000	19.12000
583.000	0.330	199.470	582.994	-712.006	-1.526	-1.054	0.889	0.55070	-0.20000	-83.48000
608.000	0.310	204.070	607.994	-687.006	-1.655	-1.106	0.982	0.13017	-0.08000	18.40000
633.000	0.290	211.390	632.993	-662.006	-1.771	-1.166	1.058	0.17276	-0.08000	29.28000
658.000	0.320	210.970	657.993	-637.007	-1.885	-1.235	1.129	0.12033	0.12000	-1.68000
683.000	0.390	195.110	682.993	-612.007	-2.027	-1.293	1.230	0.48003	0.28000	-63.44000
708.000	0.340	185.020	707.992	-587.008	-2.183	-1.322	1.356	0.32500	-0.20000	-40.36000
733.000	0.210	192.720	732.992	-562.008	-2.302	-1.339	1.455	0.53945	-0.52000	30.80000
758.000	0.180	178.240	757.992	-537.008	-2.386	-1.347	1.526	0.22983	-0.12000	-57.92000
783.000	0.270	178.730	782.991	-512.008	-2.484	-1.345	1.614	0.36008	0.36000	1.96000
808.000	0.260	135.300	807.991	-487.009	-2.583	-1.304	1.721	0.78526	-0.04000	-173.72000
833.000	0.320	147.940	832.991	-462.009	-2.682	-1.227	1.845	0.34946	0.24000	50.56000
858.000	0.460	129.800	857.990	-437.010	-2.806	-1.113	2.006	0.74007	0.56000	-72.56000
883.000	0.550	142.850	882.989	-412.011	-2.966	-0.963	2.217	0.58197	0.36000	52.20000
908.000	0.820	166.930	907.988	-387.012	-3.236	-0.850	2.508	1.55636	1.08000	96.32000
933.000	1.500	195.160	932.983	-362.017	-3.726	-0.895	2.926	3.47556	2.72000	112.92000
958.000	2.340	197.890	957.968	-337.032	-4.527	-1.138	3.533	3.37891	3.36000	10.92000
983.000	2.260	204.730	982.948	-312.052	-5.461	-1.501	4.204	1.14290	-0.32000	27.36000
1,008.000	2.460	202.450	1,007.927	-287.073	-6.404	-1.912	4.862	0.88361	0.80000	-9.12000
1,033.000	2.600	200.260	1,032.903	-262.097	-7.432	-2.313	5.600	0.68044	0.56000	-8.76000
1,058.000	2.650	203.760	1,057.876	-237.124	-8.493	-2.742	6.354	0.67153	0.20000	14.00000
1,083.000	2.950	201.810	1,082.846	-212.153	-9.619	-3.214	7.148	1.25887	1.20000	-7.80000
1,108.000	3.140	199.830	1,107.811	-187.189	-10.861	-3.685	8.046	0.86857	0.76000	-7.92000
1,133.000	3.300	198.600	1,132.772	-162.228	-12.187	-4.147	9.023	0.69708	0.64000	-4.92000
1,158.000	3.390	195.610	1,157.729	-137.271	-13.581	-4.575	10.075	0.78510	0.36000	-11.96000
1,183.000	3.720	194.660	1,182.681	-112.319	-15.077	-4.980	11.230	1.34082	1.32000	-3.80000
1,208.000	3.980	196.730	1,207.625	-87.375	-16.692	-5.435	12.469	1.17911	1.04000	8.28000
1,233.000	4.020	199.120	1,232.564	-62.436	-18.351	-5.971	13.710	0.68574	0.16000	9.56000

RECEIVED  
Office of Oil and Gas  
NOV 18 2021  
WV Department of Environmental Protection



**EQT**  
Survey Report

Database:	EDM_Definitive	Local Co-ordinate Reference:	Well M06H
Company:	EQT (Chevron Data) 02-13-21	TVD Reference:	PD560 @ 1295.000usft (PD560)
Project:	Marshall County, WV Chevron	MD Reference:	PD560 @ 1295.000usft (PD560)
Site:	Longworth	North Reference:	True
Well:	M06H	Survey Calculation Method:	Minimum Curvature
Wellbore:	OH		
Design:	Longworth 6H As-Drilled		

Survey

Measured Depth (usft)	Inclination (°)	Azimuth (°)	Vertical Depth (usft)	Subsea Depth (usft)	+N/-S (usft)	+E/-W (usft)	Vertical Section (usft)	Dogleg Rate (°/100usft)	Build Rate (°/100usft)	Turn Rate (°/100usft)
1,258.000	4.250	199.020	1,257.499	-37.501	-20.055	-6.560	14.967	0.92045	0.92000	-0.40000
1,283.000	4.350	199.640	1,282.428	-12.572	-21.824	-7.181	16.268	0.44110	0.40000	2.48000
1,308.000	4.320	203.130	1,307.357	12.357	-23.583	-7.869	17.530	1.06184	-0.12000	13.96000
1,333.000	4.190	207.750	1,332.288	37.288	-25.257	-8.665	18.668	1.46593	-0.52000	18.48000
1,358.000	4.170	208.890	1,357.221	62.221	-26.861	-9.529	19.713	0.34186	-0.08000	4.56000
1,383.000	4.220	210.590	1,382.154	87.154	-28.449	-10.436	20.723	0.53610	0.20000	6.80000
1,408.000	4.300	212.350	1,407.085	112.085	-30.032	-11.406	21.702	0.61305	0.32000	7.04000
1,433.000	4.330	216.390	1,432.015	137.015	-31.584	-12.467	22.611	1.22153	0.12000	16.16000
1,458.000	4.270	224.140	1,456.944	161.944	-33.011	-13.675	23.343	2.33489	-0.24000	31.00000
1,483.000	4.320	228.850	1,481.874	186.874	-34.299	-15.032	23.883	1.42465	0.20000	18.84000
1,508.000	4.300	229.250	1,506.804	211.804	-35.530	-16.451	24.346	0.14443	-0.08000	1.60000
1,533.000	4.370	230.450	1,531.732	236.732	-36.748	-17.896	24.785	0.45829	0.28000	4.80000
1,558.000	4.620	231.340	1,556.655	261.655	-37.984	-19.417	25.205	1.03816	1.00000	3.56000
1,583.000	4.910	232.260	1,581.569	286.569	-39.268	-21.049	25.618	1.19957	1.16000	3.68000
1,608.000	5.020	235.430	1,606.475	311.475	-40.543	-22.796	25.973	1.18215	0.44000	12.68000
1,633.000	5.110	239.380	1,631.377	336.377	-41.731	-24.654	26.198	1.44030	0.36000	15.80000
1,658.000	5.110	243.770	1,656.278	361.278	-42.790	-26.611	26.265	1.56366	0.00000	17.56000
1,683.000	5.170	245.030	1,681.178	386.178	-43.758	-28.631	26.221	0.51134	0.24000	5.04000
1,708.000	5.160	248.120	1,706.076	411.076	-44.652	-30.695	26.093	1.11328	-0.04000	12.36000
1,733.000	5.080	248.160	1,730.976	435.976	-45.483	-32.766	25.904	0.32032	-0.32000	0.16000
1,758.000	4.690	247.900	1,755.886	460.886	-46.279	-34.740	25.728	1.56251	-1.56000	-1.04000
1,783.000	4.480	247.800	1,780.806	485.806	-47.033	-36.591	25.569	0.84061	-0.84000	-0.40000
1,808.000	4.380	247.120	1,805.731	510.731	-47.773	-38.375	25.429	0.45181	-0.40000	-2.72000
1,833.000	4.170	245.430	1,830.661	535.661	-48.522	-40.081	25.331	0.97947	-0.84000	-6.76000
1,858.000	3.640	244.650	1,855.603	560.603	-49.240	-41.625	25.279	2.13057	-2.12000	-3.12000
1,883.000	3.250	241.570	1,880.558	585.558	-49.917	-42.965	25.281	1.72620	-1.56000	-12.32000
1,908.000	3.150	238.530	1,905.519	610.519	-50.613	-44.174	25.359	0.78774	-0.40000	-12.16000
1,933.000	3.120	235.680	1,930.482	635.482	-51.355	-45.322	25.507	0.63483	-0.12000	-11.40000
1,958.000	2.940	238.110	1,955.447	660.447	-52.077	-46.428	25.655	0.88437	-0.72000	9.72000
1,983.000	2.690	238.660	1,980.416	685.416	-52.721	-47.474	25.760	1.00581	-1.00000	2.20000
2,008.000	2.210	237.590	2,005.393	710.394	-53.284	-48.382	25.855	1.92861	-1.92000	-4.28000
2,033.000	2.110	239.430	2,030.376	735.376	-53.777	-49.185	25.934	0.48673	-0.40000	7.36000
2,058.000	1.860	242.510	2,055.361	760.361	-54.198	-49.941	25.971	1.08689	-1.00000	12.32000
2,083.000	1.320	245.210	2,080.351	785.351	-54.506	-50.562	25.966	2.18009	-2.16000	10.80000
2,108.000	1.000	245.260	2,105.346	810.346	-54.718	-51.022	25.949	1.28001	-1.28000	0.20000
2,133.000	0.880	241.170	2,130.342	835.343	-54.902	-51.388	25.949	0.54965	-0.48000	-16.36000
2,158.000	1.040	237.410	2,155.339	860.339	-55.117	-51.748	25.979	0.68748	0.64000	-15.04000
2,183.000	0.810	231.580	2,180.336	885.336	-55.349	-52.077	26.038	0.99288	-0.92000	-23.32000
2,208.000	0.400	214.760	2,205.334	910.334	-55.530	-52.265	26.116	1.77007	-1.64000	-67.28000
2,233.000	0.490	223.900	2,230.334	935.334	-55.679	-52.389	26.193	0.45742	0.36000	36.56000
2,258.000	0.090	199.500	2,255.333	960.333	-55.775	-52.470	26.242	1.63892	-1.60000	-97.60000
2,283.000	0.730	223.390	2,280.332	985.332	-55.909	-52.586	26.310	2.59494	2.56000	95.56000

RECEIVED  
Office of Oil and Gas  
NOV 18 2021  
WV Department of Environmental Protection

12/16/2022



**EQT**  
Survey Report

Database:	EDM_Definitive	Local Co-ordinate Reference:	Well M06H
Company:	EQT (Chevron Data) 02-13-21	TVD Reference:	PD560 @ 1295.000usft (PD560)
Project:	Marshall County, WV Chevron	MD Reference:	PD560 @ 1295.000usft (PD560)
Site:	Longworth	North Reference:	True
Well:	M06H	Survey Calculation Method:	Minimum Curvature
Wellbore:	OH		
Design:	Longworth 6H As-Drilled		

**Survey**

Measured Depth (usft)	Inclination (°)	Azimuth (°)	Vertical Depth (usft)	Subsea Depth (usft)	+N/-S (usft)	+E/-W (usft)	Vertical Section (usft)	Dogleg Rate (°/100usft)	Build Rate (°/100usft)	Turn Rate (°/100usft)
2,308.000	0.450	219.400	2,305.331	1,010.331	-56.100	-52.758	26.404	1.13132	-1.12000	-15.96000
2,333.000	0.360	234.280	2,330.330	1,035.330	-56.222	-52.884	26.456	0.55085	-0.36000	59.52000
2,358.000	0.280	227.740	2,355.330	1,060.330	-56.309	-52.993	26.485	0.35127	-0.32000	-26.16000
2,383.000	0.270	229.130	2,380.330	1,085.330	-56.389	-53.082	26.516	0.04808	-0.04000	5.56000
2,408.000	0.250	243.540	2,405.329	1,110.330	-56.452	-53.176	26.530	0.27268	-0.08000	57.64000
2,433.000	0.210	233.740	2,430.329	1,135.329	-56.503	-53.262	26.537	0.22386	-0.16000	-39.20000
2,458.000	0.260	252.010	2,455.329	1,160.329	-56.548	-53.352	26.536	0.35788	0.20000	73.08000
2,483.000	0.210	232.970	2,480.329	1,185.329	-56.593	-53.443	26.536	0.36822	-0.20000	-76.16000
<b>KOP=2508' MD/2505' TVD</b>										
2,508.000	0.350	272.160	2,505.329	1,210.329	-56.617	-53.556	26.507	0.91797	0.56000	156.76000
2,533.000	1.400	243.930	2,530.325	1,235.325	-56.749	-53.907	26.467	4.41644	4.20000	-112.92000
										0
2,558.000	1.930	243.340	2,555.315	1,260.315	-57.072	-54.557	26.463	2.12108	2.12000	-2.36000
2,583.000	2.280	241.570	2,580.298	1,285.298	-57.498	-55.371	26.478	1.42378	1.40000	-7.08000
2,608.000	2.620	240.050	2,605.275	1,310.275	-58.020	-56.303	26.525	1.38449	1.36000	-6.08000
2,633.000	3.950	240.000	2,630.233	1,335.233	-58.735	-57.544	26.607	5.32001	5.32000	-0.20000
2,658.000	4.470	240.790	2,655.166	1,360.166	-59.641	-59.140	26.699	2.09285	2.08000	3.16000
2,683.000	5.360	241.190	2,680.074	1,385.074	-60.680	-61.013	26.784	3.56262	3.56000	1.60000
2,708.000	6.260	240.850	2,704.945	1,409.945	-61.906	-63.227	26.885	3.60262	3.60000	-1.36000
2,733.000	6.580	239.380	2,729.788	1,434.788	-63.300	-65.650	27.041	1.43888	1.28000	-5.88000
2,758.000	6.570	237.060	2,754.624	1,459.624	-64.807	-68.083	27.294	1.06328	-0.04000	-9.28000
2,783.000	6.600	235.700	2,779.459	1,484.459	-66.394	-70.470	27.639	0.63526	0.12000	-5.44000
2,808.000	7.230	235.990	2,804.277	1,509.277	-68.084	-72.961	28.029	2.52386	2.52000	1.16000
2,833.000	8.070	233.900	2,829.054	1,534.054	-69.998	-75.683	28.515	3.53897	3.36000	-8.36000
2,858.000	8.360	233.490	2,853.798	1,558.798	-72.113	-78.562	29.111	1.18343	1.16000	-1.64000
2,883.000	9.550	234.110	2,878.492	1,583.492	-74.410	-81.703	29.751	4.77556	4.76000	2.48000
2,908.000	9.930	234.780	2,903.132	1,608.132	-76.869	-85.144	30.401	1.58616	1.52000	2.68000
2,933.000	10.650	234.850	2,927.730	1,632.730	-79.442	-88.794	31.059	2.88043	2.88000	0.28000
2,958.000	11.620	235.160	2,952.259	1,657.259	-82.211	-92.749	31.755	3.88737	3.88000	1.24000
2,983.000	11.890	234.370	2,976.735	1,681.735	-85.149	-96.909	32.510	1.25729	1.08000	-3.16000
3,008.000	13.020	235.940	3,001.146	1,706.146	-88.227	-101.335	33.270	4.71816	4.52000	6.28000
3,033.000	13.290	235.850	3,025.490	1,730.490	-91.417	-106.046	34.003	1.08310	1.08000	-0.36000
3,058.000	14.250	235.870	3,049.771	1,754.771	-94.757	-110.971	34.773	3.84005	3.84000	0.08000
3,083.000	15.450	235.920	3,073.936	1,778.936	-98.349	-116.277	35.597	4.80027	4.80000	0.20000
3,108.000	16.650	235.960	3,097.961	1,802.961	-102.220	-122.003	36.482	4.80020	4.80000	0.16000
3,133.000	16.800	235.270	3,121.903	1,826.903	-106.283	-127.940	37.443	0.99541	0.60000	-2.76000
3,158.000	17.370	233.720	3,145.800	1,850.800	-110.550	-133.917	38.568	2.91808	2.28000	-6.20000
3,183.000	18.450	232.540	3,169.588	1,874.588	-115.164	-140.066	39.927	4.55712	4.32000	-4.72000
3,208.000	19.100	230.180	3,193.258	1,898.258	-120.190	-146.348	41.593	3.99842	2.60000	-9.44000
3,233.000	18.940	228.740	3,216.893	1,921.893	-125.485	-152.539	43.540	1.98322	-0.64000	-5.76000
3,258.000	19.380	226.870	3,240.509	1,945.509	-130.996	-158.617	45.732	3.02049	1.76000	-7.48000
3,283.000	19.610	227.190	3,264.075	1,969.075	-136.683	-164.721	48.068	1.01433	0.92000	1.28000
3,308.000	20.210	228.600	3,287.581	1,992.581	-142.389	-171.038	50.327	3.07376	2.40000	5.64000

RECEIVED  
Office of Oil and Gas  
NOV 18 2022  
WV Department of Environmental Protection



EQT  
Survey Report

Database:	EDM_Definitive	Local Co-ordinate Reference:	Well M06H
Company:	EQT (Chevron Data) 02-13-21	TVD Reference:	PD560 @ 1295.000usft (PD560)
Project:	Marshall County, WV Chevron	MD Reference:	PD560 @ 1295.000usft (PD560)
Site:	Longworth	North Reference:	True
Well:	M06H	Survey Calculation Method:	Minimum Curvature
Wellbore:	OH		
Design:	Longworth 6H As-Drilled		

Survey

Measured Depth (usft)	Inclination (°)	Azimuth (°)	Vertical Depth (usft)	Subsea Depth (usft)	+N/-S (usft)	+E/-W (usft)	Vertical Section (usft)	Dogleg Rate (°/100usft)	Build Rate (°/100usft)	Turn Rate (°/100usft)
3,333.000	21.420	230.360	3,310.949	2,015.949	-148.158	-177.793	52.444	5.44780	4.84000	7.04000
3,358.000	22.710	232.850	3,334.118	2,039.118	-153.985	-185.156	54.341	6.37272	5.16000	9.96000
3,383.000	23.810	234.050	3,357.086	2,062.086	-159.862	-193.087	56.026	4.79073	4.40000	4.80000
3,408.000	25.220	234.640	3,379.832	2,084.832	-165.907	-201.517	57.638	5.72431	5.64000	2.36000
3,433.000	25.900	233.920	3,402.385	2,107.385	-172.205	-210.273	59.328	2.99035	2.72000	-2.88000
3,458.000	27.190	234.340	3,424.749	2,129.749	-178.751	-219.327	61.106	5.21431	5.16000	1.68000
3,483.000	28.620	233.230	3,446.842	2,151.842	-185.665	-228.765	63.041	6.08552	5.72000	-4.44000
3,508.000	29.310	234.350	3,468.715	2,173.715	-192.816	-238.534	65.039	3.51053	2.76000	4.48000
3,533.000	30.790	234.950	3,490.354	2,195.354	-200.057	-248.745	66.918	6.04069	5.92000	2.40000
3,558.000	32.530	235.480	3,511.633	2,216.633	-207.542	-259.522	68.761	7.04833	6.96000	2.12000
3,583.000	34.160	235.980	3,532.516	2,237.516	-215.278	-270.879	70.568	6.61198	6.52000	2.00000
3,608.000	35.490	236.350	3,553.038	2,258.038	-223.227	-282.738	72.338	5.38670	5.32000	1.48000
3,633.000	37.200	236.070	3,573.174	2,278.174	-231.467	-295.050	74.166	6.87212	6.84000	-1.12000
3,658.000	37.250	235.070	3,593.081	2,298.081	-240.018	-307.524	76.198	2.42802	0.20000	-4.00000
3,683.000	37.110	234.340	3,613.000	2,318.000	-248.747	-319.855	78.454	1.85133	-0.56000	-2.92000
3,708.000	37.060	233.870	3,632.943	2,337.943	-257.585	-332.067	80.861	1.15114	-0.20000	-1.88000
3,733.000	36.840	233.400	3,652.922	2,357.922	-266.496	-344.169	83.382	1.43231	-0.88000	-1.88000
3,758.000	36.480	232.430	3,672.977	2,377.977	-275.496	-356.076	86.070	2.72765	-1.44000	-3.88000
3,783.000	35.910	231.860	3,693.153	2,398.153	-284.555	-367.733	88.924	2.64786	-2.28000	-2.28000
3,808.000	34.990	231.310	3,713.518	2,418.518	-293.564	-379.094	91.865	3.89490	-3.68000	-2.20000
3,833.000	34.290	230.510	3,734.086	2,439.086	-302.523	-390.124	94.911	3.33889	-2.80000	-3.20000
3,858.000	34.520	230.280	3,754.713	2,459.713	-311.528	-401.007	98.064	1.05671	0.92000	-0.92000
3,883.000	35.180	230.900	3,775.229	2,480.229	-320.597	-412.045	101.205	2.99629	2.64000	2.48000
3,908.000	35.080	230.920	3,795.675	2,500.676	-329.668	-423.211	104.290	0.40264	-0.40000	0.08000
3,933.000	34.640	230.500	3,816.189	2,521.189	-338.716	-434.270	107.402	2.00490	-1.76000	-1.68000
3,958.000	34.010	229.480	3,836.836	2,541.836	-347.778	-445.068	110.645	3.41217	-2.52000	-4.08000
3,983.000	33.740	228.740	3,857.592	2,562.592	-356.900	-455.602	114.059	1.97189	-1.08000	-2.96000
4,008.000	33.330	227.730	3,878.431	2,583.431	-366.098	-465.904	117.646	2.76959	-1.64000	-4.04000
4,033.000	33.460	229.670	3,899.304	2,604.304	-375.179	-476.240	121.112	4.30255	0.52000	7.76000
4,058.000	33.240	229.980	3,920.187	2,625.187	-384.045	-486.741	124.313	1.11315	-0.88000	1.24000
4,083.000	32.850	229.710	3,941.143	2,646.143	-392.836	-497.161	127.483	1.66746	-1.56000	-1.08000
4,108.000	32.470	228.780	3,962.190	2,667.190	-401.643	-507.381	130.757	2.51800	-1.52000	-3.72000
4,133.000	31.980	230.020	3,983.340	2,688.340	-410.319	-517.501	133.958	3.29189	-1.96000	4.96000
4,158.000	31.650	229.990	4,004.583	2,709.583	-418.789	-527.598	136.988	1.32152	-1.32000	-0.12000
4,183.000	31.590	231.530	4,025.872	2,730.872	-427.080	-537.749	139.832	3.23842	-0.24000	6.16000
4,208.000	31.000	232.860	4,047.235	2,752.235	-435.041	-548.008	142.332	3.63392	-2.36000	5.32000
4,233.000	30.680	232.910	4,068.700	2,773.700	-442.774	-558.228	144.647	1.28410	-1.28000	0.20000
4,258.000	31.040	234.810	4,090.161	2,795.161	-450.335	-568.583	146.748	4.15564	1.44000	7.60000
4,283.000	30.850	234.810	4,111.603	2,816.603	-457.744	-579.089	148.644	0.76000	-0.76000	0.00000
4,308.000	30.790	235.080	4,133.072	2,838.072	-465.100	-589.574	150.503	0.60314	-0.24000	1.08000
4,333.000	30.910	234.610	4,154.535	2,859.535	-472.482	-600.056	152.387	1.07693	0.48000	-1.88000
4,358.000	30.340	234.100	4,176.048	2,881.048	-479.903	-610.405	154.365	2.50565	-2.28000	-2.04000
4,383.000	31.230	234.640	4,197.525	2,902.525	-487.356	-620.805	156.349	3.72767	3.56000	2.16000

RECEIVED  
Office of Oil and Gas  
NOV 18 2022  
WV Department of Environmental Protection



**EQT**  
Survey Report

Database:	EDM_Definlive	Local Co-ordinate Reference:	Well M06H
Company:	EQT (Chevron Data) 02-13-21	TVD Reference:	PD560 @ 1295.000usft (PD560)
Project:	Marshall County, WV Chevron	MD Reference:	PD560 @ 1295.000usft (PD560)
Site:	Longworth	North Reference:	True
Well:	M06H	Survey Calculation Method:	Minimum Curvature
Wellbore:	OH		
Design:	Longworth 6H As-Drilled		

**Survey**

Measured Depth (usft)	Inclination (°)	Azimuth (°)	Vertical Depth (usft)	Subsea Depth (usft)	+N/-S (usft)	+E/-W (usft)	Vertical Section (usft)	Dogleg Rate (°/100usft)	Build Rate (°/100usft)	Turn Rate (°/100usft)
4,408.000	32.330	235.280	4,218.777	2,923.777	-494.915	-631.586	158.255	4.60188	4.40000	2.56000
4,433.000	33.550	235.480	4,239.758	2,944.758	-502.637	-642.773	160.126	4.89934	4.88000	0.80000
4,458.000	34.320	235.510	4,260.499	2,965.499	-510.543	-654.274	162.020	3.08073	3.08000	0.12000
4,483.000	33.760	234.530	4,281.215	2,986.215	-518.565	-665.740	164.032	3.13563	-2.24000	-3.92000
4,508.000	33.280	233.850	4,302.058	3,007.058	-526.642	-676.936	166.216	2.43772	-1.92000	-2.72000
4,533.000	34.220	233.690	4,322.844	3,027.844	-534.851	-688.140	168.514	3.77677	3.76000	-0.64000
4,558.000	35.060	233.200	4,343.413	3,048.413	-543.315	-699.554	170.945	3.53987	3.36000	-1.96000
4,583.000	35.380	233.020	4,363.836	3,068.836	-551.970	-711.085	173.494	1.34567	1.28000	-0.72000
4,608.000	35.030	232.620	4,384.264	3,089.264	-560.680	-722.569	176.113	1.67655	-1.40000	-1.60000
4,633.000	34.130	231.290	4,404.847	3,109.847	-569.422	-733.743	178.900	4.69842	-3.60000	-5.32000
4,658.000	33.360	230.290	4,425.635	3,130.635	-578.200	-744.504	181.906	3.79776	-3.08000	-4.00000
4,683.000	33.120	230.660	4,446.544	3,151.545	-586.921	-755.074	184.946	1.25687	-0.96000	1.48000
4,708.000	32.620	230.910	4,467.542	3,172.542	-595.500	-765.586	187.884	2.07233	-2.00000	1.00000
4,733.000	32.280	231.320	4,488.639	3,193.639	-603.921	-776.028	190.714	1.61985	-1.36000	1.64000
4,758.000	33.990	231.750	4,509.572	3,214.572	-612.420	-786.728	193.497	6.90427	6.84000	1.72000
4,783.000	33.920	232.520	4,530.309	3,235.309	-620.991	-797.751	196.200	1.74294	-0.28000	3.08000
4,808.000	34.050	232.150	4,551.039	3,256.039	-629.530	-808.813	198.856	0.97714	0.52000	-1.48000
4,833.000	33.840	232.240	4,571.778	3,276.778	-638.087	-819.843	201.543	0.86372	-0.84000	0.36000
4,858.000	35.170	233.920	4,592.380	3,297.380	-646.590	-831.166	204.050	6.54126	5.32000	6.72000
4,883.000	35.040	233.510	4,612.833	3,317.833	-655.098	-842.755	206.442	1.07698	-0.52000	-1.64000
4,908.000	35.010	232.670	4,633.305	3,338.306	-663.715	-854.228	208.983	1.93214	-0.12000	-3.36000
4,933.000	34.160	231.840	4,653.888	3,358.888	-672.401	-865.449	211.699	3.88728	-3.40000	-3.32000
4,958.000	34.260	231.980	4,674.562	3,379.562	-681.072	-876.512	214.473	0.50905	0.40000	0.56000
4,983.000	35.110	234.660	4,695.120	3,400.120	-689.565	-887.921	216.933	6.98319	3.40000	10.72000
5,008.000	35.350	234.570	4,715.541	3,420.542	-697.916	-899.678	219.108	0.98220	0.96000	-0.36000
5,033.000	36.000	236.440	4,735.850	3,440.850	-706.171	-911.694	221.082	5.07805	2.60000	7.48000
5,058.000	35.420	238.730	4,756.151	3,461.151	-713.993	-924.009	222.535	5.82784	-2.32000	9.16000
5,083.000	34.690	238.890	4,776.616	3,481.616	-721.429	-936.293	223.657	2.94304	-2.92000	0.64000
5,108.000	34.640	238.610	4,797.178	3,502.178	-728.806	-948.449	224.783	0.66769	-0.20000	-1.12000
5,133.000	34.100	237.830	4,817.813	3,522.813	-736.238	-960.447	226.031	2.78707	-2.16000	-3.12000
5,158.000	33.590	237.040	4,838.577	3,543.577	-743.732	-972.181	227.451	2.69423	-2.04000	-3.16000
5,183.000	33.230	239.170	4,859.446	3,564.447	-751.005	-983.866	228.696	4.90713	-1.44000	8.52000
5,208.000	32.520	241.640	4,880.444	3,585.444	-757.708	-995.663	229.383	6.06800	-2.84000	9.88000
5,245.000	31.830	236.560	4,911.767	3,616.767	-767.811	-1,012.560	230.814	7.54324	-1.86486	-13.72973
5,305.000	32.280	233.110	4,962.624	3,667.624	-786.149	-1,038.579	235.501	3.14214	0.75000	-5.75000
5,394.000	32.400	226.410	5,037.843	3,742.843	-816.866	-1,074.868	246.631	4.02771	0.13483	-7.52809
5,483.000	32.440	222.530	5,112.980	3,817.980	-850.901	-1,108.278	262.019	2.33736	0.04494	-4.35955
5,573.000	32.460	222.980	5,188.927	3,893.928	-886.359	-1,141.061	278.960	0.26920	0.02222	0.50000
5,662.000	32.520	223.940	5,263.998	3,968.998	-921.058	-1,173.944	295.179	0.58330	0.06742	1.07865
5,751.000	32.400	225.540	5,339.095	4,044.095	-954.986	-1,207.563	310.377	0.97422	-0.13483	1.79775
5,841.000	32.450	225.210	5,415.063	4,120.063	-988.885	-1,241.909	325.223	0.20430	0.05556	-0.36667
5,930.000	32.460	224.720	5,490.163	4,195.163	-1,022.677	-1,275.660	340.241	0.29566	0.01124	-0.55056

RECEIVED  
Office of Oil and Gas  
NOV 18 2021  
WV Department of Environmental Protection



EQT  
Survey Report

Database:	EDM_Definitive	Local Co-ordinate Reference:	Well M06H
Company:	EQT (Chevron Data) 02-13-21	TVD Reference:	PD560 @ 1295.000usft (PD560)
Project:	Marshall County, WV Chevron	MD Reference:	PD560 @ 1295.000usft (PD560)
Site:	Longworth	North Reference:	True
Well:	M06H	Survey Calculation Method:	Minimum Curvature
Wellbore:	OH		
Design:	Longworth 6H As-Drilled		

Survey

Measured Depth (usft)	Inclination (°)	Azimuth (°)	Vertical Depth (usft)	Subsea Depth (usft)	+N-S (usft)	+E-W (usft)	Vertical Section (usft)	Dogleg Rate (°/100usft)	Build Rate (°/100usft)	Turn Rate (°/100usft)
6,019.000	32.440	225.610	5,565.267	4,270.267	-1,056.346	-1,309.523	355.099	0.53703	-0.02247	1.00000
6,109.000	32.340	226.640	5,641.265	4,346.265	-1,089.760	-1,344.275	369.329	0.62304	-0.11111	1.14444
6,198.000	32.470	224.890	5,716.408	4,421.408	-1,123.030	-1,378.444	383.693	1.06378	0.14607	-1.96629
6,288.000	33.770	210.890	5,791.896	4,496.896	-1,161.670	-1,408.381	404.756	8.60525	1.44444	-15.55556
6,377.000	35.080	199.300	5,865.387	4,570.387	-1,207.086	-1,429.557	435.809	7.49811	1.47191	-13.02247
6,467.000	38.870	192.180	5,937.308	4,642.308	-1,259.143	-1,444.075	475.787	6.34855	4.21111	-7.91111
6,556.000	43.660	182.320	6,004.259	4,709.259	-1,317.233	-1,451.223	524.467	9.06253	5.38202	-11.07865
6,646.000	45.860	180.240	6,068.164	4,773.164	-1,380.579	-1,452.616	580.429	2.93634	2.44444	-2.31111
6,735.000	46.030	177.540	6,130.056	4,835.056	-1,444.517	-1,451.375	638.104	2.18849	0.19101	-3.03371
6,825.000	46.020	176.020	6,192.549	4,897.549	-1,509.179	-1,447.737	697.502	1.21543	-0.01111	-1.68889
6,914.000	45.940	176.920	6,254.396	4,959.396	-1,573.056	-1,443.796	756.335	0.73271	-0.08989	1.01124
7,003.000	46.060	178.330	6,316.222	5,021.222	-1,637.019	-1,441.144	814.666	1.14756	0.13483	1.58427
7,093.000	51.730	177.500	6,375.369	5,080.369	-1,704.760	-1,438.657	876.298	6.33811	6.30000	-0.92222
7,182.000	57.400	173.990	6,426.959	5,131.959	-1,777.021	-1,433.202	943.301	7.13372	6.37079	-3.94382
7,272.000	62.750	164.460	6,471.918	5,176.918	-1,853.454	-1,418.478	1,018.197	10.92640	5.94444	-10.58889
7,361.000	69.380	154.280	6,508.085	5,213.085	-1,929.343	-1,389.710	1,098.919	12.82774	7.44944	-11.43820
Top of Marcellus @ 6531' TVD										
7,432.139	73.041	151.053	6,531.000	5,236.000	-1,989.143	-1,358.778	1,166.241	6.70145	5.14588	-4.53571
7,451.000	74.020	150.220	6,536.347	5,241.347	-2,004.905	-1,349.909	1,184.308	6.70145	5.19206	-4.41833
7,540.000	80.200	149.410	6,556.192	5,261.192	-2,079.858	-1,306.303	1,270.862	7.00020	6.94382	-0.91011
M06H LP										
7,546.638	80.752	149.300	6,557.290	5,262.290	-2,085.491	-1,302.965	1,277.394	8.47073	8.31223	-1.65379
M06H LP2										
7,627.710	87.493	147.981	6,565.588	5,270.588	-2,154.312	-1,261.017	1,357.725	8.47073	8.31477	-1.62748
7,629.000	87.600	147.960	6,565.643	5,270.643	-2,155.404	-1,260.334	1,359.008	8.47073	8.31632	-1.61145
LP=7719' MD/ 6568' TVD										
7,719.000	89.230	144.890	6,568.133	5,273.133	-2,230.348	-1,210.587	1,448.314	3.86084	1.81111	-3.41111
7,808.000	89.290	144.890	6,569.282	5,274.282	-2,303.148	-1,159.404	1,536.351	0.06742	0.06742	0.00000
7,898.000	89.480	143.900	6,570.248	5,275.249	-2,376.317	-1,107.010	1,625.262	1.12001	0.21111	-1.10000
7,988.000	89.320	143.440	6,571.191	5,276.191	-2,448.819	-1,053.694	1,713.991	0.54112	-0.17778	-0.51111
8,077.000	89.480	142.440	6,572.123	5,277.123	-2,519.836	-1,000.061	1,801.536	1.13783	0.17978	-1.12360
8,166.000	89.380	140.210	6,573.008	5,278.009	-2,589.311	-944.451	1,888.592	2.50801	-0.11236	-2.50562
8,255.000	89.420	139.050	6,573.940	5,278.941	-2,657.113	-886.808	1,975.067	1.30407	0.04494	-1.30337
8,345.000	89.350	138.660	6,574.907	5,279.907	-2,724.883	-827.595	2,062.220	0.44023	-0.07778	-0.43333
8,434.000	89.380	133.760	6,575.893	5,280.894	-2,789.107	-766.028	2,147.262	5.50538	0.03371	-5.50562
8,523.000	89.350	133.710	6,576.880	5,281.880	-2,850.631	-701.725	2,231.122	0.06551	-0.03371	-0.05618
8,612.000	89.380	141.910	6,577.868	5,282.868	-2,916.513	-642.008	2,316.814	9.21298	0.03371	9.21348
8,702.000	89.290	139.670	6,578.913	5,283.913	-2,986.239	-585.121	2,404.669	2.49073	-0.10000	-2.48889
8,791.000	89.380	135.710	6,579.946	5,284.946	-3,052.038	-525.227	2,490.366	4.45029	0.10112	-4.44944
8,880.000	89.290	134.590	6,580.979	5,285.979	-3,115.130	-462.465	2,574.935	1.26240	-0.10112	-1.25843
8,970.000	89.290	138.010	6,582.094	5,287.095	-3,180.182	-400.300	2,660.986	3.79971	0.00000	3.80000
9,059.000	89.320	143.480	6,583.175	5,288.175	-3,249.067	-344.009	2,747.821	6.14571	0.03371	6.14607
9,149.000	89.380	143.350	6,584.196	5,289.196	-3,321.330	-290.371	2,836.481	0.15908	0.06667	-0.14444

RECEIVED  
Office of Oil and Gas  
NOV 18 2022  
WV Department of Environmental Protection





**EQT**  
Survey Report

Database:	EDM_Definitive	Local Co-ordinate Reference:	Well M06H
Company:	EQT (Chevron Data) 02-13-21	TVD Reference:	PD560 @ 1295.000usft (PD560)
Project:	Marshall County, WV Chevron	MD Reference:	PD560 @ 1295.000usft (PD560)
Site:	Longworth	North Reference:	True
Well:	M06H	Survey Calculation Method:	Minimum Curvature
Wellbore:	OH		
Design:	Longworth 6H As-Drilled		

**Survey**

Measured Depth (usft)	Inclination (°)	Azimuth (°)	Vertical Depth (usft)	Subsea Depth (usft)	+N/-S (usft)	+E/-W (usft)	Vertical Section (usft)	Dogleg Rate (°/100usft)	Build Rate (°/100usft)	Turn Rate (°/100usft)
9,238.000	89.450	138.730	6,585.105	5,290.105	-3,390.513	-234.428	2,923.426	5.19134	0.07865	-5.19101
9,328.000	89.380	131.380	6,586.025	5,291.025	-3,454.166	-170.896	3,008.842	8.16661	-0.07778	-8.16667
9,417.000	89.350	128.200	6,587.012	5,292.012	-3,511.113	-102.522	3,090.443	3.57297	-0.03371	-3.57303
9,507.000	89.290	136.050	6,588.082	5,293.082	-3,571.430	-35.827	3,174.299	8.72186	-0.06667	8.72222
9,597.000	89.230	139.710	6,589.244	5,294.244	-3,638.169	24.519	3,261.041	4.06687	-0.06667	4.06667
9,686.000	89.230	143.640	6,590.441	5,295.441	-3,707.970	79.694	3,348.192	4.41533	0.00000	4.41573
9,776.000	89.320	144.150	6,591.580	5,296.580	-3,780.679	132.724	3,436.977	0.57538	0.10000	0.56667
9,865.000	89.260	142.150	6,592.683	5,297.683	-3,851.888	186.092	3,524.575	2.24803	-0.06742	-2.24719
9,955.000	89.290	140.990	6,593.821	5,298.821	-3,922.384	242.027	3,612.690	1.28922	0.03333	-1.28889
10,044.000	89.320	144.280	6,594.901	5,299.901	-3,993.105	296.029	3,700.136	3.69651	0.03371	3.69663
10,133.000	89.290	145.320	6,595.981	5,300.981	-4,065.825	347.327	3,788.152	1.16894	-0.03371	1.16854
10,223.000	89.350	148.530	6,597.049	5,302.049	-4,141.226	396.433	3,877.579	3.56704	0.06667	3.56667
10,312.000	89.320	152.320	6,598.083	5,303.083	-4,218.611	440.349	3,966.445	4.25827	-0.03371	4.25843
10,402.000	89.420	151.450	6,599.072	5,304.072	-4,297.986	482.758	4,056.412	0.97297	0.11111	-0.96667
10,491.000	89.320	145.810	6,600.052	5,305.052	-4,373.941	529.067	4,145.076	6.33769	-0.11236	-6.33708
10,580.000	89.290	143.980	6,601.131	5,306.131	-4,446.743	580.243	4,233.112	2.05630	-0.03371	-2.05618
10,670.000	89.230	143.610	6,602.294	5,307.294	-4,519.359	633.399	4,321.871	0.41645	-0.06667	-0.41111
10,759.000	89.420	144.910	6,603.342	5,308.342	-4,591.591	685.380	4,409.759	1.47609	0.21348	1.46067
10,848.000	89.690	143.640	6,604.033	5,309.033	-4,663.840	737.344	4,497.654	1.45881	0.30337	-1.42697
10,938.000	89.630	143.900	6,604.567	5,309.567	-4,736.437	790.535	4,586.413	0.29648	-0.06667	0.28889
11,027.000	89.820	145.270	6,604.995	5,309.995	-4,808.968	842.109	4,674.384	1.55404	0.21348	1.53933
11,117.000	89.880	145.330	6,605.230	5,310.230	-4,882.960	893.344	4,763.509	0.09428	0.06667	0.06667
11,206.000	90.250	143.490	6,605.129	5,310.129	-4,955.332	945.137	4,851.438	2.10880	0.41573	-2.06742
11,296.000	89.940	141.540	6,604.980	5,309.980	-5,026.745	999.905	4,939.846	2.19387	-0.34444	-2.16667
11,385.000	89.880	139.000	6,605.120	5,310.120	-5,095.186	1,056.786	5,026.550	2.85473	-0.06742	-2.85393
11,475.000	89.480	138.330	6,605.622	5,310.623	-5,162.762	1,116.226	5,113.631	0.86701	-0.44444	-0.74444
11,564.000	89.420	137.200	6,606.477	5,311.477	-5,228.653	1,176.046	5,199.377	1.27139	-0.06742	-1.26966
11,654.000	89.420	136.210	6,607.388	5,312.388	-5,294.153	1,237.760	5,285.626	1.09994	0.00000	-1.10000
11,743.000	89.480	136.100	6,608.242	5,313.242	-5,358.339	1,299.408	5,370.671	0.14078	0.06742	-0.12360
11,833.000	87.940	134.220	6,610.268	5,315.269	-5,422.135	1,362.848	5,456.173	2.69979	-1.71111	-2.08889
11,922.000	88.620	137.750	6,612.941	5,317.941	-5,486.101	1,424.651	5,541.091	4.03743	0.76404	3.96629
12,012.000	88.520	142.090	6,615.188	5,320.188	-5,554.926	1,482.567	5,628.603	4.82200	-0.11111	4.82222
12,101.000	88.650	143.110	6,617.386	5,322.386	-5,625.607	1,536.606	5,716.030	1.15499	0.14607	1.14607

RECEIVED  
Office of Oil and Gas  
NOV 18 2021  
WV Department of Environmental Protection



EQT  
Survey Report

Database:	EDM_Definitive	Local Co-ordinate Reference:	Well M06H
Company:	EQT (Chevron Data) 02-13-21	TVD Reference:	PD560 @ 1295.000usft (PD560)
Project:	Marshall County, WV Chevron	MD Reference:	PD560 @ 1295.000usft (PD560)
Site:	Longworth	North Reference:	True
Well:	M06H	Survey Calculation Method:	Minimum Curvature
Wellbore:	OH		
Design:	Longworth 6H As-Drilled		

Survey

Measured Depth (usft)	Inclination (°)	Azimuth (°)	Vertical Depth (usft)	Subsea Depth (usft)	+N/-S (usft)	+E/-W (usft)	Vertical Section (usft)	Dogleg Rate (°/100usft)	Build Rate (°/100usft)	Turn Rate (°/100usft)
12,191.000	88.710	142.150	6,619.459	5,324.459	-5,697.113	1,591.217	5,804.452	1.06847	0.06667	-1.06667
12,280.000	88.650	142.030	6,621.509	5,326.509	-5,767.313	1,645.886	5,891.733	0.15071	-0.06742	-0.13483
12,370.000	88.860	140.830	6,623.465	5,328.465	-5,837.661	1,701.984	5,979.788	1.35329	0.23333	-1.33333
12,459.000	89.260	142.280	6,624.925	5,329.925	-5,907.355	1,757.312	6,066.913	1.68985	0.44944	1.62921
12,549.000	89.260	145.730	6,626.088	5,331.088	-5,980.154	1,810.194	6,155.712	3.83301	0.00000	3.83333
12,638.000	89.570	147.610	6,626.996	5,331.996	-6,054.508	1,859.091	6,244.110	2.14077	0.34831	2.11236
12,728.000	89.660	147.460	6,627.601	5,332.601	-6,130.441	1,907.401	6,333.654	0.19436	0.10000	-0.16667
12,817.000	89.600	144.450	6,628.176	5,333.176	-6,204.177	1,957.220	6,421.913	3.38262	-0.06742	-3.38202
12,907.000	89.630	140.640	6,628.781	5,333.781	-6,275.607	2,011.941	6,510.316	4.23337	0.03333	-4.23333
12,996.000	89.510	141.000	6,629.449	5,334.449	-6,344.594	2,068.166	6,597.213	0.42636	-0.13483	0.40449
13,086.000	89.350	141.150	6,630.344	5,335.344	-6,414.608	2,124.710	6,685.170	0.24368	-0.17778	0.16667
13,175.000	89.320	140.890	6,631.377	5,336.377	-6,483.789	2,180.692	6,772.130	0.29405	-0.03371	-0.29213
13,264.000	89.110	140.470	6,632.596	5,337.597	-6,552.634	2,237.081	6,858.974	0.52757	-0.23596	-0.47191
13,354.000	89.080	139.850	6,634.018	5,339.018	-6,621.730	2,294.732	6,946.609	0.68961	-0.03333	-0.68889
13,443.000	89.050	140.550	6,635.470	5,340.470	-6,690.098	2,351.694	7,033.284	0.78713	-0.03371	0.78652
13,533.000	89.050	141.490	6,636.963	5,341.963	-6,760.051	2,408.300	7,121.214	1.04430	0.00000	1.04444
13,622.000	89.020	141.970	6,638.461	5,343.461	-6,829.915	2,463.416	7,208.395	0.54030	-0.03371	0.53933
13,711.000	89.020	142.570	6,639.984	5,344.984	-6,900.294	2,517.870	7,295.740	0.67406	0.00000	0.67416
13,801.000	89.140	141.090	6,641.429	5,346.429	-6,971.039	2,573.481	7,383.931	1.64963	0.13333	-1.64444
13,890.000	89.170	139.850	6,642.741	5,347.741	-7,039.676	2,630.121	7,470.701	1.39351	0.03371	-1.39326
13,979.000	89.020	138.430	6,644.147	5,349.147	-7,106.977	2,688.337	7,556.986	1.60418	-0.16854	-1.59551
14,069.000	89.050	137.980	6,645.663	5,350.663	-7,174.065	2,748.310	7,643.871	0.50104	0.03333	-0.50000
14,158.000	89.050	140.070	6,647.139	5,352.139	-7,241.247	2,806.659	7,730.110	2.34799	0.00000	2.34831
14,247.000	88.980	140.550	6,648.669	5,353.669	-7,309.723	2,863.489	7,816.822	0.54495	-0.07865	0.53933
14,337.000	88.920	139.310	6,650.318	5,355.318	-7,378.584	2,921.413	7,904.369	1.37916	-0.06667	-1.37778

RECEIVED  
Office of Oil and Gas  
NOV 18 2022  
WV Department of  
Environmental Protection



**EQT**  
Survey Report

Database: EDM_Definitive	Local Co-ordinate Reference:	Well M06H
Company: EQT (Chevron Data) 02-13-21	TVD Reference:	PD560 @ 1295.000usft (PD560)
Project: Marshall County, WV Chevron	MD Reference:	PD560 @ 1295.000usft (PD560)
Site: Longworth	North Reference:	True
Well: M06H	Survey Calculation Method:	Minimum Curvature
Wellbore: OH		
Design: Longworth 6H As-Drilled		

**Survey**

Measured Depth (usft)	Inclination (°)	Azimuth (°)	Vertical Depth (usft)	Subsea Depth (usft)	+N/-S (usft)	+E/-W (usft)	Vertical Section (usft)	Dogleg Rate (°/100usft)	Build Rate (°/100usft)	Turn Rate (°/100usft)
14,426.00 0	88.890	139.260	6,652.019	5,357.019	-7,446.030	2,979.457	7,990.707	0.06551	-0.03371	-0.05618
14,515.00 0	89.020	139.800	6,653.642	5,358.642	-7,513.725	3,037.212	8,077.137	0.62398	0.14607	0.60674
14,604.00 0	88.860	139.810	6,655.288	5,360.288	-7,581.696	3,094.642	8,163.667	0.18013	-0.17978	0.01124
14,694.00 0	88.890	138.960	6,657.055	5,362.056	-7,650.001	3,153.218	8,251.011	0.94485	0.03333	-0.94444
14,783.00 0	88.980	138.810	6,658.710	5,363.710	-7,717.042	3,211.732	8,337.197	0.19652	0.10112	-0.16854
14,872.00 0	88.770	138.820	6,660.457	5,365.457	-7,784.009	3,270.326	8,423.355	0.23622	-0.23596	0.01124
14,962.00 0	88.340	141.830	6,662.727	5,367.727	-7,853.250	3,327.761	8,511.021	3.37734	-0.47778	3.34444
15,051.00 0	88.490	145.210	6,665.190	5,370.190	-7,924.774	3,380.647	8,598.683	3.80004	0.16854	3.79775
15,140.00 0	88.430	143.280	6,667.582	5,372.582	-7,996.970	3,432.630	8,686.540	2.16880	-0.06742	-2.16854
<b>M06H BHL Short</b>										
15,165.98 1	88.502	142.974	6,668.277	5,373.277	-8,017.746	3,448.214	8,712.104	1.20973	0.27758	-1.17787
15,230.00 0	88.680	142.220	6,669.851	5,374.851	-8,068.586	3,487.088	8,774.992	1.20973	0.27786	-1.17774
15,319.00 0	88.710	140.860	6,671.878	5,376.878	-8,138.257	3,542.428	8,862.101	1.52807	0.03371	-1.52809
15,408.00 0	88.770	143.200	6,673.836	5,378.836	-8,208.397	3,597.168	8,949.360	2.62944	0.06742	2.62921
15,498.00 0	88.890	142.810	6,675.673	5,380.673	-8,280.264	3,651.314	9,037.895	0.45330	0.13333	-0.43333
15,588.00 0	89.020	141.790	6,677.315	5,382.315	-8,351.461	3,706.341	9,126.227	1.14231	0.14444	-1.13333
15,677.00 0	88.920	144.190	6,678.915	5,383.915	-8,422.513	3,759.903	9,213.772	2.69853	-0.11236	2.69663
15,767.00 0	88.950	146.750	6,680.588	5,385.588	-8,496.639	3,810.905	9,302.912	2.84415	0.03333	2.84415
15,856.00 0	88.920	148.060	6,682.242	5,387.242	-8,571.607	3,858.840	9,391.425	1.47204	-0.03371	1.47191
15,946.00 0	89.170	147.460	6,683.742	5,388.742	-8,647.720	3,906.845	9,480.993	0.72214	0.27778	-0.66667
16,035.00 0	89.080	144.980	6,685.102	5,390.102	-8,721.680	3,956.320	9,569.298	2.78803	-0.10112	-2.78652
16,125.00 0	88.950	140.540	6,686.650	5,391.650	-8,793.302	4,010.762	9,657.747	4.93472	-0.14444	-4.93333
16,214.00 0	88.980	138.470	6,688.257	5,393.257	-8,860.968	4,068.544	9,744.164	2.32571	0.03371	-2.32584
16,303.00 0	88.980	137.660	6,689.842	5,394.842	-8,927.164	4,128.012	9,830.025	0.90997	0.00000	-0.91011
16,393.00 0	88.980	136.760	6,691.444	5,396.444	-8,993.200	4,189.140	9,916.488	0.99984	0.00000	-1.00000

RECEIVED  
Office of Oil and Gas  
NOV 18 2022  
WV Department of  
Environmental Protection



**EQT**  
Survey Report

Database:	EDM_Definitive	Local Co-ordinate Reference:	Well M06H
Company:	EQT (Chevron Data) 02-13-21	TVD Reference:	PD560 @ 1295.000usft (PD560)
Project:	Marshall County, WV Chevron	MD Reference:	PD560 @ 1295.000usft (PD560)
Site:	Longworth	North Reference:	True
Well:	M06H	Survey Calculation Method:	Minimum Curvature
Wellbore:	OH		
Design:	Longworth 6H As-Drilled		

Measured Depth (usft)	Inclination (°)	Azimuth (°)	Vertical Depth (usft)	Subsea Depth (usft)	+N/-S (usft)	+E/-W (usft)	Vertical Section (usft)	Dogleg Rate (°/100usft)	Build Rate (°/100usft)	Turn Rate (°/100usft)
16,482.00	88.920	135.790	6,693.075	5,398.075	-9,057.505	4,250.645	10,001.57	1.09179	-0.06742	-1.08989
0							6			
16,572.00	88.710	138.680	6,694.937	5,399.937	-9,123.557	4,311.735	10,088.03	3.21889	-0.23333	3.21111
0							7			
16,661.00	88.920	139.940	6,696.777	5,401.777	-9,191.025	4,369.746	10,174.37	1.43496	0.23596	1.41573
0							9			
16,751.00	88.860	142.730	6,698.521	5,403.521	-9,261.278	4,425.959	10,262.40	3.10013	-0.06667	3.10000
0							1			
16,840.00	88.770	147.370	6,700.363	5,405.363	-9,334.192	4,476.919	10,350.43	5.21335	-0.10112	5.21348
0							9			
16,929.00	88.950	146.380	6,702.133	5,407.133	-9,408.712	4,525.544	10,438.86	1.13038	0.20225	-1.11236
0							2			
17,019.00	88.680	146.430	6,703.995	5,408.995	-9,483.663	4,575.332	10,528.19	0.30510	-0.30000	0.05556
0							5			
17,108.00	88.950	141.910	6,705.836	5,410.836	-9,555.786	4,627.407	10,616.02	5.08662	0.30337	-5.07865
0							7			
17,198.00	88.460	139.540	6,707.870	5,412.870	-9,625.434	4,684.362	10,703.84	2.68836	-0.54444	-2.63333
0							2			
17,287.00	88.430	140.320	6,710.286	5,415.286	-9,693.516	4,741.632	10,790.40	0.87673	-0.03371	0.87640
0							0			
17,377.00	88.090	142.120	6,713.019	5,418.019	-9,763.641	4,797.973	10,878.36	2.03446	-0.37778	2.00000
0							5			
17,466.00	88.030	140.920	6,716.032	5,421.032	-9,833.271	4,853.320	10,965.44	1.34923	-0.06742	-1.34831
0							2			
17,556.00	88.060	139.430	6,719.102	5,424.102	-9,902.349	4,910.925	11,053.040	1.65493	0.03333	-1.65556
0										
17,645.00	88.580	139.290	6,721.711	5,426.711	-9,969.854	4,968.866	11,139.384	0.60506	0.58427	-0.15730
0										
17,735.00	88.580	140.110	6,723.942	5,428.942	-10,038.47	5,027.058	11,226.836	0.91083	0.00000	0.91111
0					3					
<b>Final Survey=17812' MD/ 6726' TVD</b>										
17,812.00	88.520	142.260	6,725.890	5,430.890	-10,098.44	5,075.304	11,302.094	2.79240	-0.07792	2.79221
0					7					
<b>M06H BHL</b>										
17,833.71	88.520	142.260	6,726.451	5,431.451	-10,115.61	5,088.590	11,323.400	0.00000	0.00000	0.00000
4					2					
<b>Projection to BHL/ Deepest Point of Well=17837' MD/ 6727' TVD</b>										
17,837.00	88.520	142.260	6,726.536	5,431.536	-10,118.21	5,090.601	11,326.624	0.00003	0.00000	0.00000
0					0					



**EQT**  
Survey Report

Database: EDM_Definitive	Local Co-ordinate Reference:	Well M06H
Company: EQT (Chevron Data) 02-13-21	TVD Reference:	PD560 @ 1295.000usft (PD560)
Project: Marahall County, WV Chevron	MD Reference:	PD560 @ 1295.000usft (PD560)
Site: Longworth	North Reference:	True
Well: M06H	Survey Calculation Method:	Minimum Curvature
Wellbore: OH		
Design: Longworth 6H As-Drilled		

Design Targets									
Target Name	Dip Angle (°)	Dip Dir. (°)	TVD (usft)	+N/-S (-56.617)	+E/-W (-53.556)	Northing (usft)	Easting (usft)	Latitude	Longitude
Longworth 6H KOP	0.000	0.000	2,505.329	-56.617	-53.556	492,985.349	1,624,075.016	39.8470356	80.7267425°W
- actual wellpath hits target center									
- Point									
Longworth 6H LP	0.000	0.000	6,568.133	-2,230.348	-1,210.587	490,827.618	1,622,888.415	39.8410679	80.7308630°W
- actual wellpath hits target center									
- Point									
Longworth 6H BHL	0.000	0.000	6,726.536	-10,118.210	5,090.601	482,854.463	1,629,081.327	39.8194119	80.7084283°W
- actual wellpath hits target center									
- Point									

Formations					
Measured Depth (usft)	Vertical Depth (usft)	Name	Lithology	Dip (°)	Dip Direction (°)
7,432.139	6,531.000	Top of Marcellus@6531' TVD		0.0000	

Design Annotations					
Measured Depth (usft)	Vertical Depth (usft)	Local Coordinates		Comment	
		+N/-S (usft)	+E/-W (usft)		
2,508.000	2,505.329	-56.617	-53.556	KOP=2508' MD/ 2505' TVD	
7,719.000	6,568.133	-2,230.348	-1,210.587	LP=7719' MD/ 6568' TVD	
17,812.000	6,725.890	-10,098.447	5,075.304	Final Survey=17812' MD/ 6726' TVD	
17,837.000	6,726.536	-10,118.210	5,090.601	Projection to BHL/ Deepest Point of Well=17837' MD/ 6727' TVD	

Checked By: \_\_\_\_\_ Approved By: \_\_\_\_\_ Date: \_\_\_\_\_

**RECEIVED**  
 Office of Oil and Gas  
**NOV 18 2022**  
 WV Department of  
 Environmental Protection

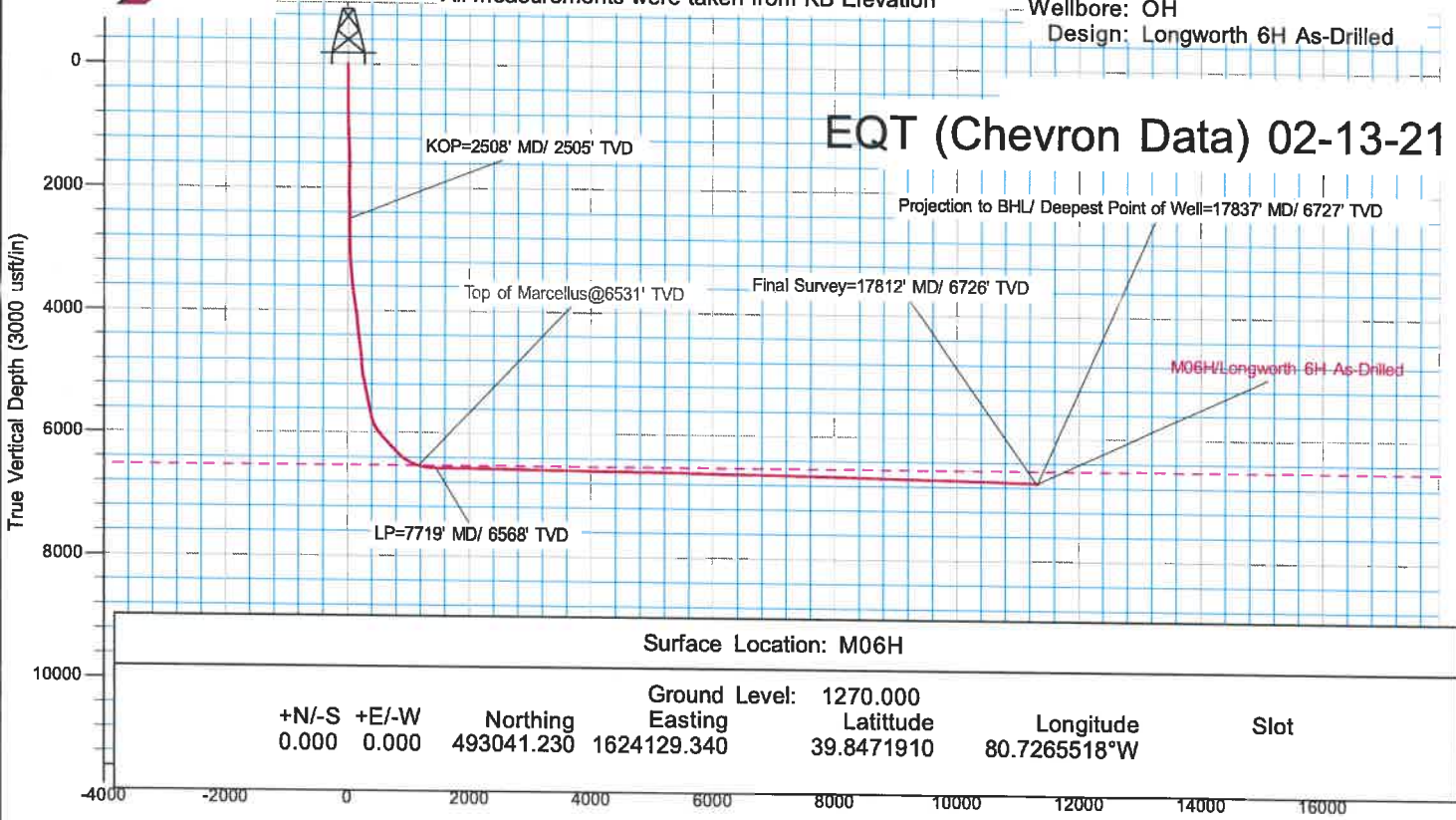
12/16/2022



KB Elevation= PD560 @ 1295.000usft (PD560)  
 Ground Elevation= 1270.000  
 All measurements were taken from KB Elevation

Project: Marshall County, WV Chevron  
 Site: Longworth  
 Well: M06H  
 Wellbore: OH  
 Design: Longworth 6H As-Drilled

# EQT (Chevron Data) 02-13-21

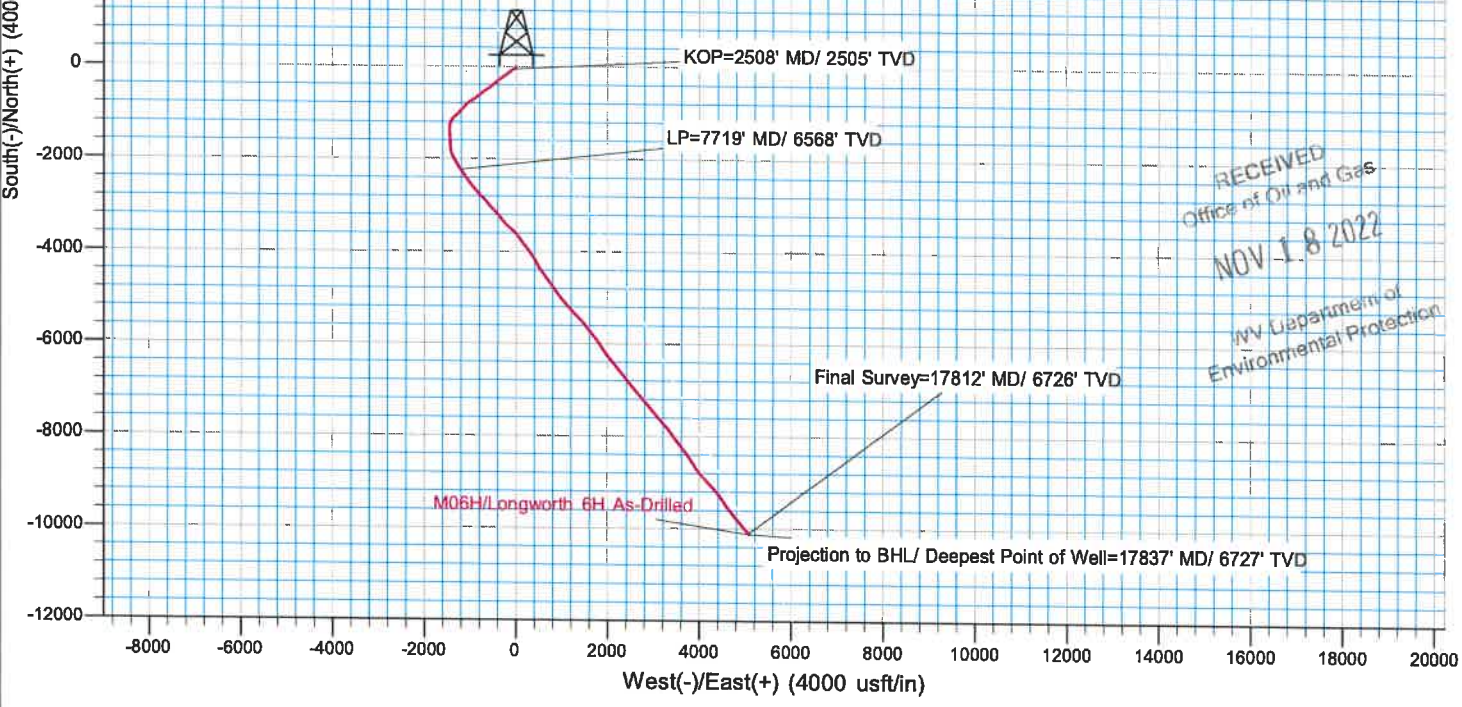


Surface Location: M06H

+N/-S	+E/-W	Ground Level:	1270.000	Latitude	39.8471910	Longitude	80.7265518°W	Slot
0.000	0.000	Northing	493041.230	Easting	1624129.340			

Vertical Section at 153.292° (3000 usft/in)

DESIGN TARGET DETAILS						
Name	TVD	Northing	Easting	Latitude	Longitude	
Longworth 6H KOP	2505.329	492985.349	1624075.016	39.8470355	80.7267425°W	
Longworth 6H LP	6568.133	490827.618	1622888.415	39.8410679	80.7308631°W	
Longworth 6H BHL	6726.536	482854.463	1629081.327	39.8194119	80.7084283°W	



RECEIVED  
 Office of Oil and Gas  
 NOV 18 2022  
 WV Department of  
 Environmental Protection