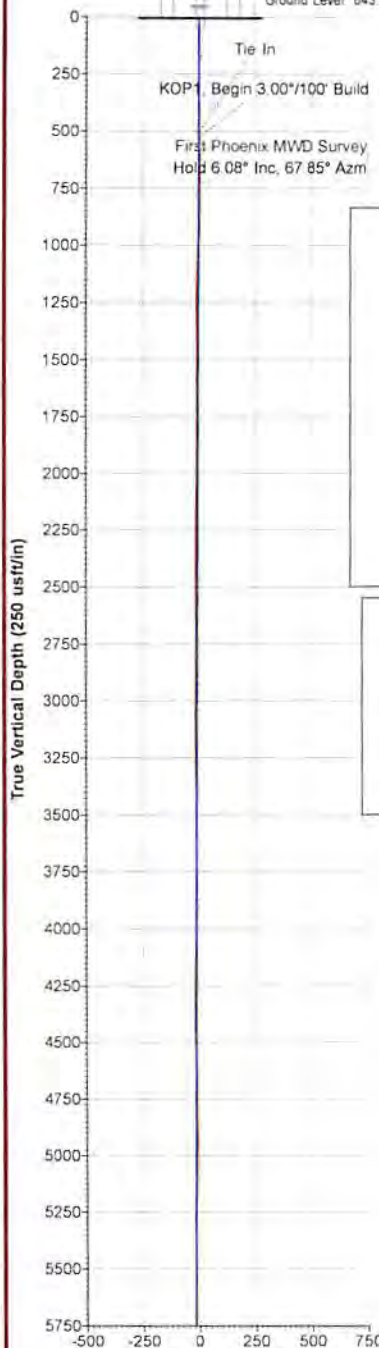


Axiall Corporation

Project: Marshall County, WV
 Site: #14 Brine Well
 Well: #14 Brine Well
 Wellbore: ST01 / Job #61950
 Design: Plan 3 11-01-17
 Rig: Precision 539



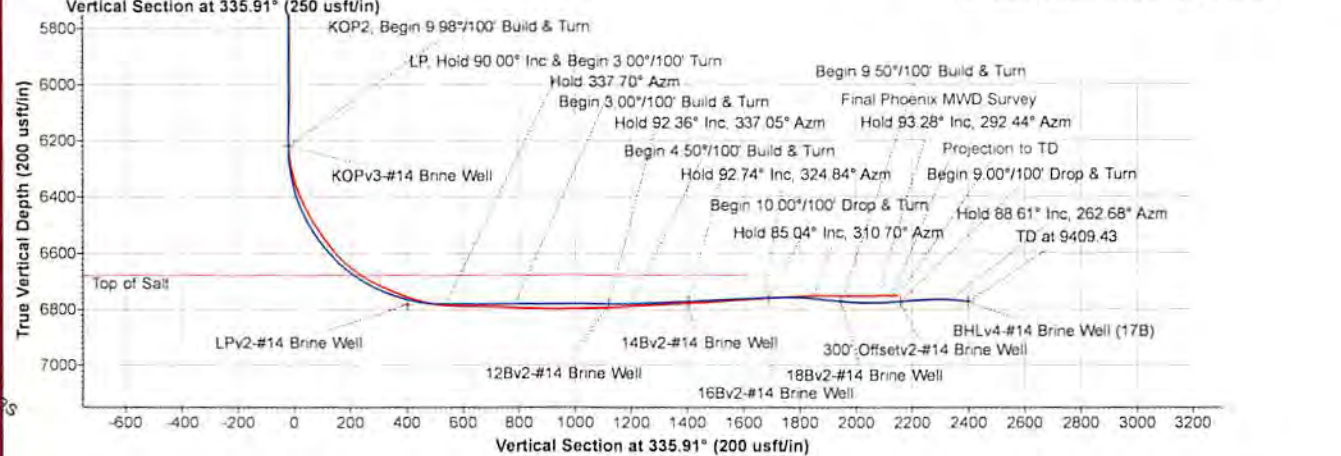
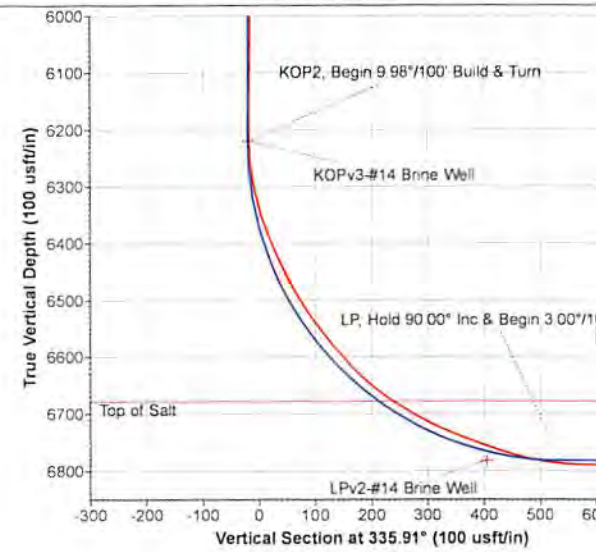
RKB @ 661.70usft (Precision 539)
 Ground Level: 643.00



WELL DETAILS										
							Ground Level:	643.00		
							Easting:	1622338.70	Latitude:	39° 44' 21.67285 N
							Northing:	454224.40	Longitude:	80° 50' 34.81986 W
+N-S	+E-W	Northing	Ground Level:	Easting	Latitude	Longitude				
0.00	0.00	454224.40	643.00	1622338.70	39° 44' 21.67285 N	80° 50' 34.81986 W				

SECTION DETAILS											
Sec	MD	Inc	Azi	TVD	+N-S	+E-W	Dleg	TFace	VSect	Target	Annotation
1	0.00	0.00	0.00	0.00	0.00	0.00	0.00	0.00	0.00		
2	527.70	0.00	0.00	527.70	0.00	0.00	0.00	0.00	0.00		KOP1, Begin 3.00°/100° Build
3	730.24	6.08	67.85	729.86	4.05	9.94	3.00	67.85	-0.36		Hold 6.08° Inc, 67.85° Azm
4	6250.09	6.08	67.85	6218.70	224.36	551.10	0.00	0.00	-20.13	KOPv3-#14 Brine Well	KOP2, Begin 9.98°/100° Build & Turn
5	7143.77	90.00	345.15	6781.70	794.23	461.50	9.98	-82.74	536.68		LP, Hold 90.00° Inc & Begin 3.00°/100° Turn
6	7392.03	90.00	337.70	6781.70	1029.39	382.48	3.00	-90.00	783.61		Hold 337.70° Azm
7	7727.48	90.00	337.70	6781.70	1339.76	255.20	0.00	0.00	1118.90	12Bv2-#14 Brine Well	Begin 3.00°/100° Build & Turn
8	7805.99	92.36	337.05	6780.02	1414.98	223.86	3.00	-15.48	1200.36		Hold 92.36° Inc, 337.05° Azm
9	8011.44	92.36	337.05	6771.70	1601.25	144.98	0.00	0.00	1402.60	14Bv2-#14 Brine Well	Begin 4.50°/100° Build & Turn
10	8282.67	92.74	324.84	6759.59	1837.65	13.64	4.50	-87.91	1672.03		Hold 92.74° Inc, 324.84° Azm
11	8301.16	92.74	324.84	6758.70	1852.75	3.00	0.00	0.00	1690.15	16Bv2-#14 Brine Well	Begin 10.00°/100° Drop & Turn
12	8462.09	85.04	310.70	6761.83	1971.52	-104.77	10.00	-118.59	1842.57		Hold 85.04° Inc, 310.70° Azm
13	8576.25	85.04	310.70	6771.70	2045.67	-191.00	0.00	0.00	1945.46	18Bv2-#14 Brine Well	Begin 9.50°/100° Build & Turn
14	8786.94	93.28	292.44	6774.82	2155.36	-369.60	9.50	-86.05	2118.50		Hold 93.28° Inc, 292.44° Azm
15	8841.53	93.28	292.44	6771.70	2176.17	-419.98	0.00	0.00	2158.05	300' Offsetv2-#14 Brine Well	Begin 9.00°/100° Drop & Turn
16	9176.02	88.61	262.68	6766.05	2219.61	-747.72	9.00	-98.46	2331.49		Hold 88.61° Inc, 262.68° Azm
17	9409.43	88.61	262.68	6771.70	2189.89	-979.16	0.00	0.00	2398.83	BHLv4-#14 Brine Well (17B)	TD at 9409.43

DESIGN TARGET DETAILS						
Name	TVD	+N-S	+E-W	Northing	Easting	
KOPv3-#14 Brine Well	6218.70	224.36	551.10	454440.50	1622893.09	
16Bv2-#14 Brine Well	6758.70	1852.75	3.00	456076.90	1622369.40	
14Bv2-#14 Brine Well	6771.70	1601.25	144.98	455823.30	1622507.60	
18Bv2-#14 Brine Well	6771.70	2045.67	-191.00	456272.70	1622176.30	
300' Offsetv2-#14 Brine Well	6771.70	2176.17	-419.98	456406.60	1621951.30	
BHLv4-#14 Brine Well (17B)	6771.70	2189.89	-979.16	456428.68	1621392.39	
12Bv2-#14 Brine Well	6781.70	1339.76	255.20	455560.20	1622613.90	
LPv2-#14 Brine Well	6781.70	660.85	486.58	454877.90	1622635.10	



RECEIVED
 Office of Oil and Gas
 APR 19 2018
 WV Department of
 Environmental Protection



Map System US State Plane 1927 (Exact solution)
Datum NAD 1927 (NADCON CONUS)
Ellipsoid Clarke 1866
Zone Name West Virginia North 4701

Local Origin Well #14 Brine Well, True North
Latitude 39° 44' 21.67285 N
Longitude 80° 50' 34.81986 W

Grid East 1622338.70
Grid North 454224.40
Scale Factor 1.000

Geomagnetic Model USER DEFINED
Sample Date 04-Nov-17
Magnetic Declination -7.57°
Dip Angle from Horizontal 66.92°
Magnetic Field Strength 52223

To convert a Magnetic Direction to a Grid Direction, Subtract 6.71°
To convert a Magnetic Direction to a True Direction, Subtract 7.57°
To convert a True Direction to a Grid Direction, Add 0.86°

LEGEND

- #14 Brine Well, OH / Job #61950 OH / Job #61950 VO
- Plan 3 11-01-17

