



# **EQT (Chevron Data) 02-13-21**

**Marshall County, WV Chevron**

**Hines Pad EQT**

**M04H**

**OH**

**Design: Hines M04H As Drilled**

## **Standard Survey Report**

**19 July, 2021**

**05/27/2022**



**EQT**  
Survey Report

Database:	EDM_Definitive	Local Co-ordinate Reference:	Well M04H
Company:	EQT (Chevron Data) 02-13-21	TVD Reference:	GL at 1125.00' & 25' KB @ 1149.998usft
Project:	Marshall County, WV Chevron	MD Reference:	GL at 1125.00' & 25' KB @ 1149.998usft
Site:	Hines Pad EQT	North Reference:	True
Well:	M04H	Survey Calculation Method:	Minimum Curvature
Wellbore:	OH		
Design:	Hines M04H As Drilled		

**Project** Marshall County, WV Chevron

Map System:	US State Plane 1983	System Datum:	Mean Sea Level
Geo Datum:	North American Datum 1983		
Map Zone:	West Virginia Northern Zone		

**Site** Hines Pad EQT

Site Position:		Northing:	514,501.050 usft	Latitude:	39.91
From:	Map	Easting:	1,631,895.930 usft	Longitude:	-80.70
Position Uncertainty:	1.500 usft	Slot Radius:	13-3/16 "	Grid Convergence:	-0.7653 °

**Well** M04H

Well Position	+N/-S	0.000 usft	Northing:	514,451.958 usft	Latitude:	39.9062581
	+E/-W	0.000 usft	Easting:	1,632,055.094 usft	Longitude:	80.6993438°W
Position Uncertainty		0.000 usft	Wellhead Elevation:	0.000 usft	Ground Level:	1,124.998 usft

**Wellbore** OH

Magnetics	Model Name	Sample Date	Declination (°)	Dip Angle (°)	Field Strength (nT)
	IGRF2000	12/31/2004	-8.4133	68.2444	53,878.85397342

**Design** Hines M04H As Drilled

Audit Notes:

Version:	1.0	Phase:	ACTUAL	Tie On Depth:	0.000
Vertical Section:		Depth From (TVD) (usft)	+N/-S (usft)	+E/-W (usft)	Direction (°)
		0.000	0.000	0.000	312.227

**Survey Program** Date 7/19/2021

From (')	To (usft)	Survey (Wellbore)	Tool Name	Description
0.00	376.999	SDI Keeper v1.04 (OH)	SDI Standard Keeper 104	Standard Wireline Keeper ver 1.0.4
0.00	2,002.996	MWD (OH)	MWD c	MWD - Standard c
0.00	12,345.578	OWSG MWD rev2 + IFR1 + Multi-Station	MWD+IFR1+MS MagVar 201 OWSG MWD + IFR1 + Multi-Station Correction	

**Survey**

Measured Depth (usft)	Inclination (°)	Azimuth (°)	Vertical Depth (usft)	Subsea Depth (usft)	+N/-S (usft)	+E/-W (usft)	Vertical Section (usft)	Dogleg Rate (°/100usft)	Build Rate (°/100usft)	Turn Rate (°/100usft)
0.00	0.000	0.000	0.000	-1,149.998	0.000	0.000	0.000	0.00000	0.00000	0.00000
25.000	0.000	183.830	25.000	-1,124.998	0.000	0.000	0.000	0.00000	0.00000	0.00000
107.899	0.000	183.830	107.899	-1,041.998	-0.136	-0.029	-0.104	0.31325	0.31325	0.00000
132.999	0.213	75.440	132.999	-1,016.998	-0.292	-0.034	-0.171	0.25772	-0.12000	-53.56011
157.999	0.210	155.360	157.999	-991.999	-0.401	-0.048	-0.236	0.40441	0.20000	79.76016
182.998	0.420	212.050	182.998	-966.999	-0.538	-0.111	-0.279	0.68685	0.56000	66.68014
207.998	0.310	188.700	207.998	-942.000	-0.592	-0.170	-0.333	0.73132	-0.44000	-93.40019



EQT  
Survey Report

Database:	EDM_Definitive	Local Co-ordinate Reference:	Well M04H
Company:	EQT (Chevron Data) 02-13-21	TVD Reference:	GL at 1125.00' & 25' KB @ 1149.998usft
Project:	Marshall County, WV Chevron	MD Reference:	GL at 1125.00' & 25' KB @ 1149.998usft
Site:	Hines Pad EOT	North Reference:	True
Well:	M04H	Survey Calculation Method:	Minimum Curvature
Wellbore:	OH		
Design:	Hines M04H As Drilled		

Survey					MD Reference						
Measured Depth (usft)	Inclination (°)	Azimuth (°)	Vertical Depth (usft)	Subsea Depth (usft)	North Reference		Vertical Section (usft)	Dogleg Rate (°/100usft)	Build Rate (°/100usft)	Turn Rate (°/100usft)	
					+N/-S (usft)	+E/-W (usft)					
232.997	0.470	189.040	232.997	-917.000	-0.880	-0.160	-0.452	0.82546	0.64000	-78.64016	
257.996	0.990	178.110	257.996	-892.001	-0.035	-0.135	-0.596	0.38340	-0.32000	28.28006	
282.995	0.000	177.580	282.995	-867.002	-0.214	-0.145	-0.706	0.49091	0.20000	62.20013	
307.995	0.440	187.870	307.995	-842.003	-0.401	-0.181	-0.808	0.12182	-0.04000	-15.16003	
332.994	0.880	187.720	332.994	-817.004	-0.600	-0.205	-0.921	0.24002	0.24000	-0.36000	
357.993	0.860	180.670	357.993	-792.004	-0.784	-0.224	-1.034	0.56018	-0.52000	-28.44006	
376.993	0.430	190.130	376.993	-773.005	-0.914	-0.237	-1.111	0.50236	0.36842	49.78957	
503.984	0.910	170.960	503.984	-646.014	-0.379	-0.162	-2.151	0.41201	0.37795	-15.09452	
535.979	1.020	185.540	535.979	-614.018	-3.914	-0.150	-2.519	0.83780	0.34375	45.56259	
597.971	0.980	241.230	597.971	-552.027	-4.718	-0.668	-2.677	1.50774	-0.06452	89.82276	
660.960	1.290	284.720	660.960	-489.038	-4.799	-1.821	-1.877	1.40061	0.47619	69.03189	
691.949	1.650	293.700	691.949	-458.048	-4.531	-2.564	-1.147	1.40114	1.19355	28.96780	
722.935	1.890	285.140	722.935	-427.063	-4.135	-3.436	-0.235	0.78732	0.77420	4.64517	
753.916	2.110	297.330	753.916	-396.082	-3.656	-4.405	0.805	0.75116	0.70968	7.06453	
784.894	2.150	293.760	784.894	-365.104	-3.159	-5.445	1.908	0.44696	0.12903	-11.51615	
815.869	2.420	287.850	815.869	-334.128	-2.724	-6.600	3.056	1.15491	0.87097	-19.06455	
847.838	2.660	282.180	847.838	-302.160	-2.361	-7.969	4.314	1.08500	0.75000	-17.71879	
878.803	2.770	276.620	878.803	-271.195	-2.123	-9.416	5.546	0.92023	0.35484	-17.93552	
909.764	2.980	274.490	909.764	-240.234	-1.973	-10.963	6.792	0.75993	0.67742	-6.87098	
940.723	2.940	271.380	940.723	-209.275	-1.891	-12.561	8.031	0.53381	-0.12903	-10.03228	
971.683	2.840	265.090	971.683	-178.314	-1.937	-14.121	9.155	1.07203	-0.32258	-20.29036	
1,002.643	3.010	264.290	1,002.643	-147.355	-2.084	-15.696	10.222	0.56396	0.54839	-2.58065	
1,034.599	3.000	268.130	1,034.599	-115.399	-2.195	-17.369	11.386	0.62974	-0.03125	12.00002	
1,065.555	3.110	266.260	1,065.555	-84.443	-2.276	-19.019	12.554	0.47877	0.35484	-6.03227	
1,096.506	3.300	272.400	1,096.506	-53.492	-2.294	-20.750	13.823	1.26477	0.61290	19.80649	
1,127.451	3.540	276.930	1,127.451	-22.546	-2.142	-22.583	15.283	1.10048	0.67742	14.61293	
1,159.390	3.610	281.630	1,159.390	9.392	-1.821	-24.542	16.950	0.96373	0.31250	14.68753	
1,190.329	3.530	283.260	1,190.329	40.332	-1.405	-26.427	18.625	0.41686	-0.25807	5.25808	
1,221.272	3.430	283.180	1,221.272	71.275	-0.975	-28.259	20.270	0.32296	-0.32258	-0.25807	
1,252.218	3.370	283.440	1,252.218	102.220	-0.552	-30.048	21.880	0.19984	-0.19355	0.83871	
1,283.158	3.720	282.480	1,283.158	133.160	-0.122	-31.916	23.551	1.14512	1.12903	-3.09678	
1,315.081	4.240	280.450	1,315.081	165.083	0.316	-34.093	25.458	1.68335	1.62500	-6.34376	
1,346.987	4.680	277.350	1,346.987	195.990	0.685	-36.469	27.466	1.56081	1.35484	-10.00002	
1,376.867	5.440	276.170	1,376.867	226.869	1.004	-39.179	29.687	2.53821	2.51613	-3.80646	
1,408.704	6.290	276.440	1,408.704	257.706	1.353	-42.327	32.252	2.74338	2.74194	0.87097	
1,439.501	6.630	276.700	1,439.501	289.503	1.765	-45.904	35.178	1.06642	1.06250	0.81250	
1,471.292	6.890	274.420	1,471.292	320.294	2.113	-49.482	38.061	0.87462	0.19355	-7.35485	
1,501.080	6.700	272.160	1,501.080	351.082	2.320	-53.089	40.871	0.85049	0.03226	-7.29034	
1,531.882	6.270	271.290	1,531.882	381.884	2.427	-56.589	43.534	1.42282	-1.38710	-2.80646	
1,562.698	6.220	268.550	1,562.698	412.700	2.422	-59.960	46.027	0.97482	-0.16129	-8.83873	
1,594.506	6.330	268.660	1,594.506	444.508	2.337	-63.456	48.559	0.34580	0.34375	0.34375	
1,625.323	6.130	272.050	1,625.323	475.325	2.356	-66.819	51.062	1.35047	-0.64516	10.93551	
1,656.145	6.150	274.250	1,656.145	506.147	2.539	-70.129	53.636	0.76175	0.06452	7.09679	



EQT  
Survey Report

Database:	EDM_Definitive	Local Co-ordinate Reference:	Well M04H
Company:	EQT (Chevron Data) 02-13-21	TVD Reference:	GL at 1125.00' & 25' KB @ 1149.998usft
Project:	Marshall County, WV Chevron	MD Reference:	GL at 1125.00' & 25' KB @ 1149.998usft
Site:	Hines Pad EQT	North Reference:	True
Well:	M04H	Survey Calculation Method:	Minimum Curvature
Wellbore:	OH		
Design:	Hines M04H As Drilled		

Wellbore	Measured Depth (usft)	Inclination (°)	Azimuth (°)	Vertical Depth (usft)	Subsea Depth (usft)	MD Reference:		Vertical Section (usft)	Dogleg Rate (°/100usft)	Build Rate (°/100usft)	Turn Rate (°/100usft)
						+N/-S (usft)	+E/-W (usft)				
	1,686.963	280	270.760	1,686.963	536.965	2.891	-73.489	56.326	0.97160	0.41936	8.09679
	1,718.766	275	277.770	1,718.766	568.769	2.929	-78.978	59.226	0.99589	0.43750	3.15626
	1,749.562	275	277.300	1,749.562	599.564	2.775	-80.508	62.149	1.07831	1.06452	-1.51613
	1,780.344	284C	277.250	1,780.344	630.346	2.243	-84.142	65.157	0.29095	0.29032	0.16129
	1,812.110	280	278.250	1,812.110	662.113	2.754	-87.661	68.349	0.75127	0.53125	4.40626
	1,842.874	284D	279.800	1,842.874	692.877	5.400	-91.729	71.554	0.58871	0.41936	3.35485
	1,873.634	285	280.550	1,873.634	723.636	4.092	-95.522	74.820	0.31675	0.00000	2.54839
	1,904.394	285	281.220	1,904.394	754.396	5.210	-99.306	78.107	0.26036	-0.06452	2.03226
	1,935.153	285	280.280	1,935.153	785.156	7.529	-103.088	81.395	0.41019	0.16129	-3.03226
	1,966.893	285	276.880	1,966.893	816.896	8.205	-107.103	84.822	1.04129	0.87500	-4.43751
	1,997.639	284D	275.390	1,997.639	847.641	8.698	-111.032	88.064	1.58294	-0.67742	-11.19357
	2,105.873	285	271.390	2,105.873	955.875	9.489	-123.898	98.122	0.92431	-0.81652	-3.66973
	2,195.150	285	266.050	2,195.150	1,045.153	9.170	-135.239	106.306	2.13347	2.00000	-5.93335
	2,283.240	285	263.230	2,283.240	1,133.243	7.983	-147.873	114.863	0.46563	0.11236	-3.16855
	2,371.440	285	262.720	2,371.440	1,221.443	6.532	-159.678	122.630	1.28318	-1.28090	-0.57303
	2,460.753	285	275.350	2,460.753	1,310.755	6.346	-170.757	130.709	1.73476	0.01111	14.03336
	2,549.128	285	274.900	2,549.128	1,399.130	7.288	-181.237	139.102	0.74397	-0.74157	-0.50562
	2,637.613	285	271.770	2,637.613	1,487.615	7.857	-190.774	146.547	0.76273	-0.66292	-3.51686
	2,727.198	285	265.610	2,727.198	1,577.200	7.690	-199.394	152.818	1.04247	-0.81111	-6.84446
	2,815.737	285	275.190	2,815.737	1,665.740	7.842	-208.402	159.590	1.89218	1.55056	10.76407
	2,905.145	285	274.680	2,905.145	1,755.147	8.728	-218.669	167.788	0.13838	0.12222	-0.56667
	2,993.639	285	267.220	2,993.639	1,843.642	8.937	-228.120	174.927	1.46786	-1.16854	-8.38204
	3,083.281	285	260.710	3,083.281	1,933.283	8.137	-236.091	180.291	1.23534	-1.05556	-7.23335
	3,171.976	285	274.580	3,171.976	2,021.979	7.858	-243.417	185.529	1.31757	0.26966	15.58430
	3,260.637	285	286.400	3,260.637	2,110.639	9.290	-251.030	192.129	1.20155	0.31461	13.28093
	3,350.307	285	282.310	3,350.307	2,200.309	11.213	-258.485	198.941	0.67785	-0.55556	-4.54445
	3,439.092	285	290.660	3,439.092	2,289.094	12.879	-264.392	204.435	1.68714	-1.56180	9.38204
	3,528.985	285	291.580	3,528.985	2,378.987	14.446	-268.466	208.505	1.08998	-1.08889	1.02222
	3,618.951	285	339.790	3,618.951	2,468.954	15.734	-270.369	210.780	2.04036	-1.60000	53.56678
	3,707.942	285	52.180	3,707.942	2,557.944	16.839	-269.971	211.228	1.25029	0.19101	81.33724
	3,797.934	285	53.010	3,797.934	2,647.936	17.576	-269.012	211.013	0.55568	-0.55556	0.92222
	3,886.929	285	20.340	3,886.929	2,736.931	18.292	-268.514	211.126	0.39541	0.14607	-36.70794
	3,976.924	285	37.380	3,976.924	2,826.926	19.121	-268.070	211.353	0.22238	-0.10000	18.93337
	4,065.921	285	359.420	4,065.921	2,915.923	19.761	-267.809	211.591	0.39316	-0.20225	-42.65177
	4,155.919	285	317.630	4,155.919	3,005.922	20.199	-267.939	211.981	0.28546	-0.15556	-46.43343
	4,244.918	285	14.050	4,244.918	3,094.921	20.570	-268.006	212.280	0.30023	0.07865	63.39339
	4,334.916	285	310.710	4,334.916	3,184.918	21.119	-268.310	212.874	0.60706	0.33333	-70.37792
	4,423.912	285	298.420	4,423.912	3,273.914	21.565	-268.922	213.627	0.29288	-0.26966	-13.80902
	4,513.907	285	306.020	4,513.907	3,363.909	22.086	-269.705	214.557	0.51760	0.51111	8.45557
	4,602.898	285	323.430	4,602.898	3,452.901	22.927	-270.568	215.762	0.28493	-0.10112	19.55060
	4,692.888	285	307.130	4,692.888	3,542.891	23.849	-271.516	217.083	0.36091	0.24444	-18.11115

KOP=1795' MD/ 4781' TVD



EQT  
Survey Report

Database:	EDM_Definitive	Local Co-ordinate Reference:	Well M04H
Company:	EQT (Chevron Data) 02-13-21	TVD Reference:	GL at 1125.00' & 25' KB @ 1149.998usft
Project:	Marshall County, WV Chevron	MD Reference:	GL at 1125.00' & 25' KB @ 1149.998usft
Site:	Hines Pad EOT	North Reference:	True
Well:	M04H	Survey Calculation Method:	Minimum Curvature
Wellbore:	OH		
Design:	Hines M04H As Drilled		

Measured Depth (usft)	Inclination (°)	Azimuth (°)	Vertical Depth (usft)	Subsea Depth (usft)	MD Reference:		Vertical Section (usft)	Dogleg Rate (°/100usft)	Build Rate (°/100usft)	Turn Rate (°/100usft)
					North Reference	Survey Calculation				
					+N-S (usft)	+E-W (usft)				
4,780.888	0.800	275.674	4,780.888	3,630.890	24.355	-272.715	218.311	0.56961	-0.18158	-35.74189
4,781.878	0.800	275.270	4,781.878	3,631.880	24.356	-272.729	218.322	0.56961	-0.01930	-40.76814
4,871.766	4.140	275.195	4,871.766	3,721.768	24.377	-275.380	219.095	0.61033	4.26668	-54.20011
4,925.473	7.731	221.630	4,925.473	3,775.475	24.353	-275.815	219.340	4.77005	4.74075	-42.29831
4,943.320	7.745	221.631	4,943.320	3,793.323	24.373	-281.045	219.415	3.00227	3.00001	5.44445
5,030.760	13.510	221.130	5,030.760	3,880.763	24.380	-293.665	221.287	6.61415	6.48316	7.38204
5,117.698	15.420	220.860	5,117.698	3,967.701	24.342	-311.825	224.833	3.23463	3.23334	-0.35556
5,202.342	19.550	227.060	5,202.342	4,052.344	24.232	-332.589	227.977	3.75407	3.51686	-4.26967
5,286.450	25.190	225.710	5,286.450	4,136.452	-49.326	-355.746	230.275	2.90479	2.85556	-1.50000
5,287.825	25.221	226.180	5,287.825	4,217.829	-71.065	-382.085	233.290	0.08901	3.93259	2.77529
5,447.351	30.470	230.930	5,447.351	4,297.354	-101.009	-414.168	238.733	5.25257	5.05557	3.05556
5,523.701	35.740	230.890	5,523.701	4,373.703	-131.207	-451.075	245.836	3.96918	3.96667	-0.26667
5,597.844	43.430	231.850	5,597.844	4,447.846	-161.009	-489.479	253.572	0.80071	-0.34832	1.30337
5,671.892	50.960	229.713	5,671.892	4,521.895	-192.254	-529.534	262.193	0.80124	0.59551	0.96629
5,746.654	57.755	238.750	5,746.654	4,596.656	-220.421	-568.819	273.880	3.74479	-0.23333	6.71112
5,820.362	64.860	256.710	5,820.362	4,670.364	-250.143	-615.929	295.368	11.40852	1.24719	20.17982
5,892.773	68.110	269.330	5,892.773	4,742.775	-246.342	-668.734	329.296	7.30098	3.61112	10.88891
5,960.868	49.110	273.930	5,960.868	4,810.871	-248.554	-725.970	371.871	7.09762	4.49439	8.53934
6,025.112	46.830	280.680	6,025.112	4,875.114	-238.395	-788.395	423.581	7.41813	5.24446	7.50002
6,083.076	52.980	286.300	6,083.076	4,933.079	-222.205	-855.227	483.949	8.33289	6.83335	6.24446
6,131.755	60.630	291.240	6,131.755	4,981.757	-198.130	-925.629	552.261	9.81632	8.65170	5.55057
6,171.387	67.090	298.000	6,171.387	5,021.389	-164.390	-998.942	629.225	9.80410	7.12224	7.51113
6,200.959	74.100	303.540	6,200.959	5,050.961	-121.417	-1,070.945	711.423	9.82070	7.87642	6.22473
6,225.169	74.740	311.760	6,225.169	5,075.172	-68.506	-1,139.511	797.755	8.82585	0.71111	9.13335
6,248.649	74.710	319.360	6,248.649	5,098.651	-7.258	-1,199.574	883.394	8.23732	-0.03371	8.53934
<b>Top of Marcellus @ 6256' TVD</b>										
6,255.773	75.232	320.152	6,255.773	5,105.775	12.995	-1,216.716	909.699	3.37032	1.90019	2.88218
6,271.079	76.430	321.940	6,271.079	5,121.081	60.138	-1,254.826	969.602	3.37032	1.91591	2.85986
6,286.079	86.150	323.210	6,286.079	5,136.081	129.757	-1,308.088	1,055.831	8.78728	8.67417	1.42697
6,291.884	88.370	325.040	6,291.884	5,141.886	201.703	-1,360.116	1,142.709	5.16629	4.74158	2.05618
<b>LP=7016' MD/ 6292' TVD</b>										
6,291.884	88.370	325.040	6,291.884	5,141.886	201.714	-1,360.124	1,142.723	0.00000	0.00000	0.00000
6,292.709	89.580	320.870	6,292.709	5,142.711	273.513	-1,414.318	1,231.107	5.24421	2.45594	-4.63407
<b>Deepest Point of Well=7106' MD/ 6293' TVD</b>										
6,292.709	90.580	320.870	6,292.709	5,142.711	273.524	-1,414.327	1,231.121	0.00601	0.00000	0.00000
6,291.901	90.460	318.520	6,291.901	5,141.903	341.378	-1,471.882	1,319.342	2.64421	-0.13485	-2.64088
6,291.186	90.460	317.970	6,291.186	5,141.189	407.770	-1,531.149	1,407.848	0.61796	0.00000	-0.61798
6,290.511	90.400	319.540	6,290.511	5,140.513	474.918	-1,591.070	1,497.347	0.63682	-0.06667	0.63333
6,289.859	90.430	319.630	6,289.859	5,139.861	542.926	-1,650.012	1,586.700	1.21154	0.03333	1.21111
6,289.098	90.550	315.030	6,289.098	5,139.100	608.664	-1,709.976	1,675.283	4.49625	0.13483	-4.49439
6,288.360	90.400	315.390	6,288.360	5,138.362	672.152	-1,772.344	1,764.133	0.31799	-0.16854	-0.26966
6,287.731	90.480	316.030	6,287.731	5,137.734	737.655	-1,834.049	1,853.848	2.93327	0.00000	2.93334
6,287.180	90.910	320.100	6,287.180	5,137.182	804.985	-1,892.357	1,942.208	2.32800	-0.10112	2.32585



EQT  
Survey Report

Database:	EDM - Definitive	Local Co-ordinate Reference:	Well M04H
Company:	EQT (Chevron Data) 02-13-21	TVD Reference:	GL at 1125.00' & 25' KB @ 1149.998usft
Project:	Marshall County, WV Chevron	MD Reference:	GL at 1125.00' & 25' KB @ 1149.998usft
Site:	Hines Pad EQT	North Reference:	True
Well:	M04H	Survey Calculation Method:	Minimum Curvature
Wellbore:	OH		
Design:	Hines M04H As Drilled		

Measured Depth (usft)	Inclination (°)	Azimuth (°)	Vertical Depth (usft)	Subsea Depth (usft)	North Reference: +N/S (usft)	+E/W (usft)	Vertical Section (usft)	Dogleg Rate (°/100usft)	Build Rate (°/100usft)	Turn Rate (°/100usft)
1,910.368	90.340	322.510	6,286.669	5,136.672	875.122	-1,948.618	2,031.072	2.67795	0.03333	2.67778
8,230.368	90.780	320.060	6,286.575	5,136.577	947.728	-2,001.787	2,119.240	2.90084	-0.62222	2.83334
8,370.368	90.710	321.310	6,286.458	5,138.461	1,022.380	-2,050.080	2,205.409	3.71138	0.66292	3.05169
8,510.368	90.710	321.310	6,285.178	5,135.180	1,097.788	-2,098.880	2,292.306	2.49315	0.98889	-2.28889
8,650.368	90.710	321.310	6,283.178	5,133.177	1,172.880	-2,147.680	2,380.278	4.34351	0.03333	-4.34445
8,790.368	90.090	319.030	6,281.481	5,131.483	1,230.182	-2,208.766	2,468.384	4.96263	-0.44944	-4.84271
8,930.368	90.460	318.110	6,280.421	5,130.423	1,305.071	-2,270.060	2,558.051	2.18603	-0.47778	-2.13334
9,070.368	90.120	316.380	6,279.970	5,129.972	1,383.058	-2,331.989	2,646.858	0.46122	-0.38202	-0.25843
9,210.368	90.070	314.890	6,279.899	5,129.902	1,463.411	-2,392.707	2,736.468	3.55946	-0.16667	3.55556
9,350.368	90.140	320.600	6,279.342	5,129.344	1,504.169	-2,450.740	2,825.669	1.89319	0.85556	1.89889
9,490.368	91.970	317.390	6,277.237	5,127.239	1,571.324	-2,509.116	2,914.011	3.86146	1.38203	-3.60675
9,630.368	90.620	316.870	6,275.281	5,125.284	1,627.180	-2,570.445	3,003.670	1.79871	-1.61111	-0.80000
9,770.368	90.740	317.680	6,274.303	5,124.305	1,702.389	-2,631.008	3,092.340	1.03004	0.24719	1.00000
9,910.368	91.480	316.470	6,272.559	5,122.561	1,768.192	-2,692.357	3,182.007	1.46365	0.82222	-1.21111
9,165.971	90.400	319.600	6,271.082	5,121.085	1,821.842	-2,755.953	3,271.877	3.42756	-1.20000	-3.21112
9,255.971	90.890	319.370	6,271.012	5,121.014	1,897.071	-2,817.907	3,361.590	6.48149	-0.78889	6.43335
9,344.971	90.090	325.360	6,271.183	5,121.185	1,967.539	-2,872.209	3,449.156	6.77895	0.44944	6.76406
9,434.971	90.540	328.440	6,271.473	5,121.476	2,042.990	-2,921.332	3,536.203	3.44353	-0.61111	3.38890
9,523.971	90.880	328.810	6,271.163	5,121.165	2,119.014	-2,967.667	3,621.581	1.54031	1.48315	0.41573
9,610.971	92.320	324.510	6,268.743	5,118.745	2,194.056	-3,017.100	3,708.686	5.00931	1.51111	-4.77779
9,700.971	91.350	319.920	6,265.969	5,115.971	2,264.340	-3,071.589	3,796.270	5.24663	-0.97753	-5.15731
9,792.971	90.890	316.390	6,264.210	5,114.212	2,332.921	-3,129.843	3,885.497	0.77967	-0.51111	-0.58889
9,884.971	91.110	316.270	6,262.657	5,112.659	2,399.905	-3,188.421	3,973.891	1.28229	0.24719	-1.25843
9,970.971	90.900	317.070	6,261.173	5,111.175	2,465.690	-3,248.344	4,062.476	1.39240	-0.34832	-1.34832
10,060.971	90.650	322.330	6,260.034	5,110.036	2,534.301	-3,306.530	4,151.673	5.84636	-0.16667	5.84446
10,148.971	91.480	323.970	6,258.379	5,108.382	2,605.503	-3,359.893	4,239.041	2.06495	0.93259	1.84270
10,238.971	91.170	316.240	6,256.296	5,106.299	2,675.502	-3,416.365	4,327.902	6.37428	-0.34445	-6.36668
10,328.971	90.860	316.480	6,254.720	5,104.722	2,740.959	-3,476.641	4,416.527	2.00767	-0.34832	-1.97753
10,418.971	90.740	318.900	6,253.463	5,103.465	2,807.504	-3,537.213	4,506.103	2.69194	-0.13333	2.68889
10,507.971	90.740	323.060	6,252.313	5,102.315	2,876.917	-3,592.863	4,593.961	5.34788	0.00000	5.34833
10,596.971	91.800	324.400	6,250.496	5,100.498	2,948.931	-3,645.127	4,681.060	1.27466	0.96629	0.83146
10,686.971	92.370	320.790	6,247.377	5,097.379	3,020.368	-3,699.754	4,769.521	4.09896	0.85556	-4.01112
10,775.971	90.620	322.170	6,245.133	5,095.135	3,089.974	-3,755.160	4,857.329	2.59294	-2.07866	1.55056
10,865.971	90.460	332.090	6,244.361	5,094.364	3,165.468	-3,803.943	4,944.190	11.02204	-0.06667	11.02224
10,954.971	90.740	335.490	6,243.429	5,093.431	3,245.301	-3,843.243	5,026.944	3.83295	0.31461	3.82023



EQT  
Survey Report

Database:	EDM_Definitive	Local Co-ordinate Reference:	Well M04H
Company:	EQT (Chevron Data) 02-13-21	TVD Reference:	GL at 1125.00' & 25' KB @ 1149.998usft
Project:	Marshall County, WV Chevron	MD Reference:	GL at 1125.00' & 25' KB @ 1149.998usft
Site:	Hines Pad EQT	North Reference:	True
Well:	M04H	Survey Calculation Method:	Minimum Curvature
Wellbore:	OH		
Design:	Hines M04H As Drilled		

Wellbore	Measured Depth (usft)	Inclination (°)	Azimuth (°)	Vertical Depth (usft)	Subsea Depth (usft)	MD Reference:		Vertical Section (usft)	Dogleg Rate (°/100usft)	Build Rate (°/100usft)	Turn Rate (°/100usft)
						+N/-S (usft)	+E/-W (usft)				
	11,450.276	89.855	316.710	6,242.538	5,092.339	3,375.194	-3,884.641	5,111.272	6.42254	-0.10000	-6.42224
	11,451.570	89.570	317.540	6,241.543	5,091.546	3,390.340	-3,893.677	5,197.431	6.93945	-0.31461	-6.93260
	11,452.864	89.284	318.370	6,240.548	5,090.750	3,405.486	-3,902.712	5,283.592	7.47621	0.34832	-5.96630
	11,454.158	89.000	319.200	6,240.056	5,090.101	3,420.633	-3,911.748	5,375.094	8.01297	-0.62222	-5.40001
	11,491.276	89.860	314.820	6,240.270	5,090.272	3,596.890	-4,114.353	5,463.989	0.64945	-0.51685	-0.39326
	11,491.977	90.180	317.720	6,240.395	5,090.398	3,661.917	-4,176.559	5,553.755	3.27361	0.57778	3.22223
	11,530.077	90.460	314.760	6,239.875	5,089.877	3,726.188	-4,238.107	5,642.525	3.34398	0.34832	-3.32585
	11,570.077	90.000	313.870	6,239.490	5,089.492	3,788.380	-4,303.153	5,732.489	2.36517	-0.54445	-2.32223
	11,581.177	89.624	315.270	6,239.467	5,089.469	3,850.183	-4,367.201	5,821.440	2.92155	0.03371	2.92135
	11,649.077	90.060	312.890	6,239.396	5,089.398	3,912.771	-4,431.850	5,911.386	2.64466	0.03333	-2.64445
	11,698.977	90.400	314.480	6,239.039	5,089.041	3,974.240	-4,496.207	6,000.353	1.82689	0.38202	1.78652
	12,028.977	90.710	318.200	6,238.167	5,088.169	4,039.336	-4,558.327	6,090.101	4.14747	0.34445	4.13334
	12,117.976	90.400	324.490	6,237.304	5,087.306	4,108.799	-4,613.888	6,177.928	7.07567	-0.34832	7.06743
	12,206.977	90.550	328.110	6,236.566	5,086.568	4,182.828	-4,663.259	6,264.239	4.07077	0.16854	4.06742
<b>Final Survey-12397' MD/ 6235' TVD</b>											
	12,296.977	90.580	326.780	6,235.678	5,085.680	4,258.681	-4,711.686	6,351.077	1.47808	0.03333	-1.47778
<b>Projection to TD-12348' MD/ 6235' TVD</b>											
	12,348.977	90.580	326.780	6,235.152	5,085.154	4,302.181	-4,740.173	6,401.406	0.00001	0.00000	-0.00001

Target Name	Dip Angle (°)	Dip Dir. (°)	TVD (usft)	+N/-S (24.355)	+E/-W (-272.715)	Northing (usft)	Easting (usft)	Latitude	Longitude
Hines 4H KOP - hit/miss target - Shape	0.000	0.000	4,780.88 8	24.355	-272.715	514,479.951	1,631,782.729	39.9063249	80.7003160°W
- actual wellpath hits target center - Point									
Hines 4H BOP - actual wellpath hits target center - Point	0.000	0.000	6,235.15 2	4,302.181	-4,740.173	518,817.036	1,627,372.777	39.9180875	80.7162438°W
Hines 4H LP - actual wellpath hits target center - Point	0.000	0.000	6,291.88 4	201.714	-1,360.124	514,671.811	1,630,697.784	39.9068117	80.7041922°W

Formations	Measured Depth (usft)	Vertical Depth (usft)	Name	Lithology	Dip (°)	Dip Direction (°)
	6,775.460	6,256.000	Top of Marcellus@6256' TVD		-1.0000	



**EQT**  
Survey Report

<b>Database:</b> EDM_Definitive	<b>Local Co-ordinate Reference:</b> Well M04H
<b>Company:</b> EQT (Chevron Data) 02-13-21	<b>TVD Reference:</b> GL at 1125.00' & 25' KB @ 1149.998usft
<b>Project:</b> Mescal County, WV Chevron	<b>MD Reference:</b> GL at 1125.00' & 25' KB @ 1149.998usft
<b>Site:</b> Nipas Pad EQT	<b>North Reference:</b> True
<b>Well:</b> M04H	<b>Survey Calculation Method:</b> Minimum Curvature
<b>Wellbore:</b> OH	
<b>Design:</b> Borehole M04H As-Drilled	

Design Annotations					
Wellbore	Measured Depth (usft)	Vertical Depth (usft)	Local Coordinates		Comment
			+N/-S (usft)	+E/-W (usft)	
	4,786.000	4,780.888	24.355	-2.0716	KOP=4785 MD/ 4781' TVD
	6,291.000	6,291.884	201.714	-1,368.194	LP=7016' MD/ 6292' TVD
	7,706.000	7,706.778	253.824	-1,111.827	Desired Forc. Well=7106' MD/ 6293' TVD
	8,211.000	8,211.672	4,246.681	-4,171.182	True Surface= 8197' MD/ 8236' TVD
	9,716.000	9,716.566	4,302.751	-4,716.276	True Surface= 8197' MD/ 8236' TVD

Checked By: \_\_\_\_\_ Approved By: \_\_\_\_\_ Date: \_\_\_\_\_

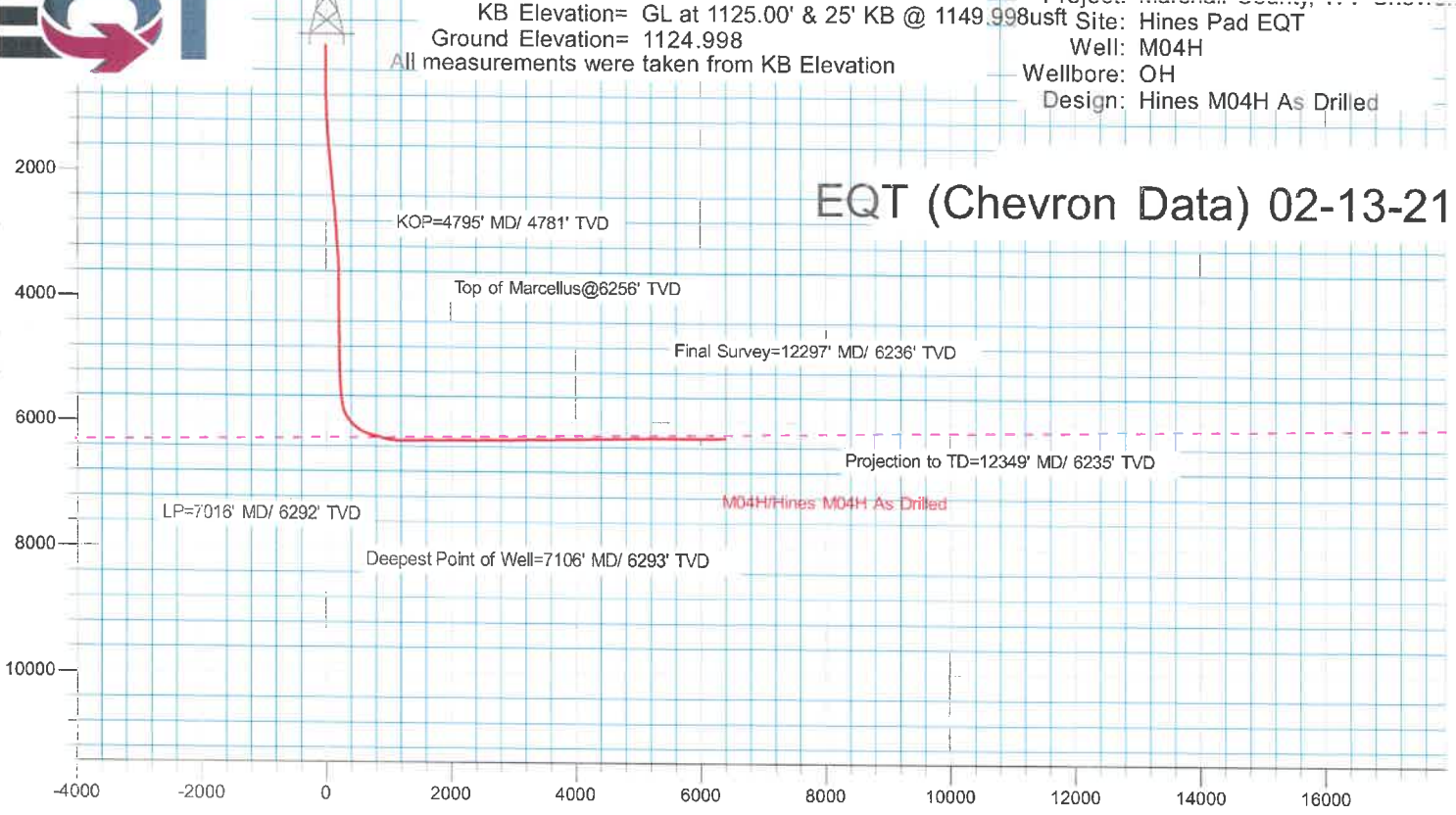




KB Elevation= GL at 1125.00' & 25' KB @ 1149.998usft  
 Ground Elevation= 1124.998  
 All measurements were taken from KB Elevation

Project: Marcellus County, PA  
 Site: Hines Pad EQT  
 Well: M04H  
 Wellbore: OH  
 Design: Hines M04H As Drilled

# EQT (Chevron Data) 02-13-21



Vertical Section at 312.227° (3000 usft/in)

Surface Location: M04H							
Ground Level: 1124.998							
+N/-S	+E/-W	Northing	Easting	Latitude	Longitude	Slot	
0.000	0.000	514451.958	1632055.094	39.9062580	80.6993439°W		
DESIGN TARGET DETAILS							
Name	TVD	Northing	Easting	Latitude	Longitude		
Hines 4H KOP	4780.888	514479.951	1631782.728	39.9063249	80.7003160°W		
Hines 4H BHL	6235.152	518817.036	1627372.777	39.9180674	80.7162438°W		
Hines 4H LP	6291.884	514671.811	1630697.784	39.9068117	80.7041923°W		

