



# **EQT (Chevron Data) 02-13-21**

**Marshall County, WV Chevron**

**Hines Pad EQT**

**M05H - Slot M05H**

**OH**

**Design: Hines M05H As Drilled**

## **Standard Survey Report**

**19 July, 2021**

**05/27/2022**



**EQT**  
Survey Report

Database:	EDM_Definitive	Local Co-ordinate Reference:	Well M05H - Slot M05H
Company:	EQT (Chevron Data) 02-13-21	TVD Reference:	GL at 1125.00' & 25' KB @ 1149.998usft
Project:	Marshall County, WV Chevron	MD Reference:	GL at 1125.00' & 25' KB @ 1149.998usft
Site:	Hines Pad EQT	North Reference:	True
Well:	M05H	Survey Calculation Method:	Minimum Curvature
Wellbore:	OH		
Design:	Hines M05H As Drilled		

**Project** Marshall County, WV Chevron

<b>Map System:</b>	US State Plane 1983	<b>System Datum:</b>	Mean Sea Level
<b>Geo Datum:</b>	North American Datum 1983		
<b>Map Zone:</b>	West Virginia Northern Zone		

**Site** Hines Pad EQT

<b>Site Position:</b>		<b>Northing:</b>	514,501.050 usft	<b>Latitude:</b>	39.91
<b>From:</b>	Map	<b>Easting:</b>	1,631,895.930 usft	<b>Longitude:</b>	-80.70
<b>Position Uncertainty:</b>	1.500 usft	<b>Slot Radius:</b>	13-3/16 "	<b>Grid Convergence:</b>	-0.7653 °

**Well** M05H - Slot M05H

<b>Well Position</b>	<b>+N/-S</b>	0.000 usft	<b>Northing:</b>	514,436.988 usft	<b>Latitude:</b>	39.9062170
	<b>+E/-W</b>	0.000 usft	<b>Easting:</b>	1,632,054.582 usft	<b>Longitude:</b>	80.6993450°W
<b>Position Uncertainty</b>		0.000 usft	<b>Wellhead Elevation:</b>	0.000 usft	<b>Ground Level:</b>	1,124.998 usft

**Wellbore** OH

Magnetics	Model Name	Sample Date	Declination (°)	Dip Angle (°)	Field Strength (nT)
	IGRF2000	12/31/2004	-8.4133	68.2443	53,878.83394820

**Design** Hines M05H As Drilled

**Audit Notes:**

<b>Version:</b>	1.0	<b>Phase:</b>	ACTUAL	<b>Tie On Depth:</b>	0.000
<b>Vertical Section:</b>		<b>Depth From (TVD) (usft)</b>	<b>+N/-S (usft)</b>	<b>+E/-W (usft)</b>	<b>Direction (°)</b>
		0.000	0.000	0.000	274.479

**Survey Program** Date 7/19/2021

From (')	To (usft)	Survey (Wellbore)	Tool Name	Description
0.00	376.999	SDI Keeper v1.04 (OH)	SDI Standard Keeper 104	Standard Wireline Keeper ver 1.0.4
0.00	2,002.996	MWD (OH)	MWD c	MWD - Standard c
0.00	12,473.975	OWSG MWD rev2 + IFR1 + Multi-Station	MWD+IFR1+MS MagVar 201	OWSG MWD + IFR1 + Multi-Station Correction

**Survey**

Measured Depth (usft)	Inclination (°)	Azimuth (°)	Vertical Depth (usft)	Subsea Depth (usft)	+N/-S (usft)	+E/-W (usft)	Vertical Section (usft)	Dogleg Rate (°/100usft)	Build Rate (°/100usft)	Turn Rate (°/100usft)
0.000	0.000	0.000	0.000	-1,149.998	0.000	0.000	0.000	0.00000	0.00000	0.00000
25.000	0.000	67.820	25.000	-1,124.998	0.000	0.000	0.000	0.00000	0.00000	0.00000
108.000	0.140	67.820	108.000	-1,041.998	0.038	0.094	-0.091	0.16868	0.16868	0.00000
133.000	0.140	29.310	133.000	-1,016.998	0.076	0.137	-0.131	0.36935	0.00000	-154.0403
158.000	0.240	344.300	157.999	-991.998	0.153	0.138	-0.126	0.68924	0.40000	-180.0403
										6



**EQT**  
Survey Report

Database:	EDM_Definitive	Local Co-ordinate Reference:	Well M05H - SioI M05H
Company:	EQT (Chevron Data) 02-13-21	TVD Reference:	GL at 1125.00' & 25' KB @ 1149.998usft
Project:	Marshall County, WV Chevron	MD Reference:	GL at 1125.00' & 25' KB @ 1149.998usft
Site:	Hines Pad EQT	North Reference:	True
Well:	M05H	Survey Calculation Method:	Minimum Curvature
Wellbore:	OH		
Design:	Hines M05H As Drilled		

**Survey**

Measured Depth (usft)	Inclination (°)	Azimuth (°)	Vertical Depth (usft)	Subsea Depth (usft)	+N/-S (usft)	+E/-W (usft)	Vertical Section (usft)	Dogleg Rate (°/100usft)	Build Rate (°/100usft)	Turn Rate (°/100usft)
183.000	0.320	325.040	182.999	-966.999	0.261	0.084	-0.063	0.48985	0.32000	-77.04016
208.000	0.130	328.910	207.999	-941.999	0.343	0.029	-0.002	0.76200	-0.76000	15.48003
233.000	0.070	99.800	232.999	-916.999	0.364	0.030	-0.001	0.73446	-0.24000	523.56105
257.999	0.070	91.400	257.999	-891.999	0.361	0.060	-0.031	0.04101	0.00000	-33.60007
282.999	0.200	23.040	282.999	-866.999	0.401	0.092	-0.061	0.74377	0.52000	-273.44054
307.999	0.280	18.600	307.998	-841.999	0.499	0.129	-0.089	0.32830	0.32000	-17.76004
332.999	0.220	356.040	332.998	-817.000	0.605	0.145	-0.097	0.45655	-0.24000	-90.24018
357.999	0.250	330.910	357.998	-792.000	0.700	0.115	-0.060	0.42543	0.12000	-100.52020
535.999	0.200	140.440	535.997	-614.001	0.800	0.124	-0.061	0.25177	-0.02809	95.24177
566.999	0.240	122.830	566.997	-583.001	0.723	0.213	-0.156	0.25192	0.12903	-56.80657
597.999	0.170	122.330	597.996	-552.001	0.664	0.307	-0.254	0.22588	-0.22581	-1.61291
629.999	0.040	133.700	629.996	-520.001	0.630	0.355	-0.304	0.40945	-0.40625	35.53132
660.999	0.360	211.470	660.996	-489.002	0.540	0.312	-0.269	1.14095	1.03226	250.87147
722.999	0.400	230.250	722.994	-427.003	0.235	0.044	-0.025	0.20988	0.06452	30.29038
753.998	0.630	234.050	753.993	-396.005	0.066	-0.178	0.182	0.74967	0.74194	12.25809
784.998	0.750	237.640	784.991	-365.007	-0.142	-0.487	0.474	0.41127	0.38710	11.58067
815.998	0.630	258.270	815.989	-334.009	-0.286	-0.825	0.800	0.88340	-0.38710	66.54852
847.998	0.430	265.410	847.987	-302.011	-0.331	-1.117	1.088	0.65700	-0.62500	22.31255
878.998	0.130	268.620	878.987	-271.011	-0.341	-1.268	1.238	0.96869	-0.96774	10.35486
909.998	0.130	311.360	909.986	-240.011	-0.319	-1.330	1.301	0.30562	0.00000	137.87125
940.998	0.330	8.010	940.986	-209.011	-0.207	-1.344	1.323	0.90456	0.64516	182.74231
971.998	0.170	23.200	971.986	-178.012	-0.077	-1.313	1.303	0.55424	-0.51613	49.00010
1,002.998	0.330	4.810	1,002.985	-147.012	0.055	-1.288	1.288	0.57098	0.51613	-59.32270
1,034.998	0.290	340.480	1,034.985	-115.013	0.223	-1.307	1.320	0.42618	-0.12500	-76.03140
1,065.998	0.200	7.710	1,065.985	-84.013	0.350	-1.326	1.349	0.46697	-0.29032	87.83889
1,096.998	0.170	324.930	1,096.984	-53.013	0.442	-1.345	1.375	0.44453	-0.09677	-138.00028
1,127.998	0.240	247.210	1,127.984	-22.013	0.454	-1.431	1.462	0.84824	0.22581	-250.71018
1,159.998	0.740	216.370	1,159.983	9.985	0.262	-1.616	1.631	1.71227	1.56250	-96.37520
1,190.998	1.520	221.320	1,190.977	40.979	-0.208	-2.006	1.983	2.53342	2.51613	15.96777
1,221.997	2.420	228.010	1,221.958	71.960	-0.955	-2.764	2.681	2.99162	2.90323	21.58069
1,252.997	3.490	228.580	1,252.916	102.919	-2.017	-3.958	3.788	3.45288	3.45162	1.83871
1,283.997	4.320	230.580	1,283.844	133.846	-3.383	-5.567	5.286	2.71283	2.67742	6.45163
1,315.997	4.990	235.250	1,315.738	165.741	-4.941	-7.642	7.233	2.40386	2.09375	14.59378
1,346.997	5.180	234.810	1,346.616	196.618	-6.516	-9.893	9.354	0.62568	0.61290	-1.41936
1,377.997	5.150	236.390	1,377.490	227.493	-8.093	-12.196	11.526	0.46891	-0.09677	5.09678
1,408.997	5.210	235.190	1,408.364	258.366	-9.666	-14.510	13.711	0.39950	0.19355	-3.87098
1,440.997	5.470	233.040	1,440.225	290.227	-11.413	-16.922	15.979	1.02512	0.81250	-6.71876
1,471.997	5.490	230.760	1,471.083	321.085	-13.239	-19.251	18.158	0.70529	0.06452	-7.35485
1,502.997	5.680	231.810	1,501.936	351.938	-15.126	-21.605	20.358	0.69590	0.61290	3.38710
1,533.997	5.570	229.910	1,532.786	382.789	-17.043	-23.962	22.558	0.69767	-0.35484	-6.12904



EQT  
Survey Report

Database:	EDM_Definitive	Local Co-ordinate Reference:	Well M05H - Slot M05H
Company:	EQT (Chevron Data) 02-13-21	TVD Reference:	GL at 1125.00' & 25' KB @ 1149.998usft
Project:	Marshall County, WV Chevron	MD Reference:	GL at 1125.00' & 25' KB @ 1149.998usft
Site:	Hines Pad EQT	North Reference:	True
Well:	M05H	Survey Calculation Method:	Minimum Curvature
Wellbore:	OH		
Design:	Hines M05H As Drilled		

Survey

Measured Depth (usft)	Inclination (°)	Azimuth (°)	Vertical Depth (usft)	Subsea Depth (usft)	+N/-S (usft)	+E/-W (usft)	Vertical Section (usft)	Dogleg Rate (°/100usft)	Build Rate (°/100usft)	Turn Rate (°/100usft)
1,564.997	4.910	229.760	1,563.657	413.659	-18.869	-26.125	24.572	2.12949	-2.12904	-0.48387
1,596.997	4.730	228.840	1,595.543	445.546	-20.622	-28.164	26.468	0.61216	-0.56250	-2.87501
1,627.997	4.400	229.850	1,626.445	476.447	-22.230	-30.035	28.208	1.09561	-1.06452	3.25807
1,658.997	4.510	231.780	1,657.351	507.353	-23.751	-31.902	29.950	0.59977	0.35484	6.22582
1,689.997	4.720	236.870	1,688.251	538.253	-25.202	-33.927	31.856	1.48397	0.67742	16.41939
1,721.996	4.890	237.110	1,720.138	570.141	-26.662	-36.175	33.983	0.53495	0.53125	0.75000
1,752.996	5.160	238.730	1,751.019	601.021	-28.103	-38.476	36.164	0.98384	0.87097	5.22582
1,783.996	5.340	238.590	1,781.889	631.891	-29.579	-40.899	38.464	0.58211	0.58065	-0.45161
1,815.996	5.600	240.670	1,813.743	663.745	-31.119	-43.531	40.968	1.02167	0.81250	6.50001
1,846.996	6.160	241.960	1,844.580	694.582	-32.642	-46.318	43.627	1.85596	1.80646	4.16130
1,877.996	6.290	240.950	1,875.397	725.399	-34.249	-49.270	46.445	0.54832	0.41936	-3.25807
1,908.996	6.480	241.280	1,906.205	756.207	-35.914	-52.289	49.324	0.62423	0.61290	1.06452
1,939.996	6.460	242.220	1,937.007	787.009	-37.567	-55.366	52.263	0.34772	-0.06452	3.03226
1,971.996	6.480	239.470	1,968.803	818.806	-39.323	-58.514	55.264	0.97029	0.06250	-8.59377
2,002.996	6.550	237.360	1,999.603	849.605	-41.166	-61.509	58.107	0.80457	0.22581	-6.80647
2,193.996	5.350	228.830	2,189.574	1,039.576	-52.904	-77.386	73.019	0.77877	-0.62827	-4.46598
2,282.995	7.160	230.140	2,278.040	1,128.043	-59.190	-84.768	79.887	2.03989	2.03371	1.47191
2,371.995	6.990	226.690	2,366.363	1,216.365	-66.460	-92.966	87.492	0.51415	-0.19101	-3.87641
2,460.995	7.840	227.310	2,454.618	1,304.620	-74.291	-101.369	95.257	0.95927	0.95506	0.69663
2,550.995	7.300	225.490	2,543.833	1,393.835	-82.461	-109.958	103.183	0.65641	-0.60000	-2.02223
2,639.995	7.420	236.520	2,632.104	1,482.106	-89.595	-118.784	111.425	1.59088	0.13483	12.39328
2,729.994	6.650	235.770	2,721.425	1,571.428	-95.733	-127.940	120.073	0.86161	-0.85556	-0.83334
2,818.994	6.030	233.750	2,809.881	1,659.883	-101.396	-135.971	127.637	0.74024	-0.69663	-2.26967
2,908.994	6.620	234.590	2,899.332	1,749.335	-107.197	-144.011	135.200	0.66355	0.65556	0.93334
2,997.994	5.020	245.550	2,987.873	1,837.875	-111.782	-151.738	142.545	2.18113	-1.79776	12.31463
3,087.994	2.840	273.020	3,077.663	1,927.666	-113.294	-157.550	148.221	3.13540	-2.42223	30.52228
3,176.993	1.120	3.570	3,166.621	2,016.623	-112.310	-159.698	150.440	3.44123	-1.93259	101.74178
3,266.993	1.460	22.320	3,256.598	2,106.601	-110.371	-159.208	150.102	0.59746	0.37778	20.83338
3,355.993	1.340	26.390	3,345.572	2,195.574	-108.390	-158.315	149.367	0.17503	-0.13483	4.57304
KOP=3445' MD/ 3435' TVD										
3,445.000	1.152	20.013	3,434.557	2,284.560	-106.617	-157.546	148.739	0.26215	-0.21122	-7.16492
3,445.993	1.150	19.930	3,435.550	2,285.552	-106.598	-157.539	148.733	0.26215	-0.20178	-8.33129
3,534.993	3.230	244.720	3,524.509	2,374.511	-106.830	-159.503	150.673	4.63639	2.33708	-151.92166
3,624.993	9.160	241.240	3,613.943	2,463.946	-111.363	-168.083	158.873	6.59909	6.58890	-3.86667
3,713.992	12.980	250.470	3,701.278	2,551.280	-118.116	-183.720	173.935	4.71837	4.29214	10.37081
3,803.992	17.450	251.910	3,788.101	2,638.103	-125.689	-206.085	195.640	4.98402	4.96668	1.60000
3,892.992	21.110	250.630	3,872.096	2,722.098	-135.151	-233.899	222.630	4.13946	4.11237	-1.43821
3,982.992	23.450	247.300	3,955.374	2,805.376	-147.440	-265.715	253.389	2.95334	2.60001	-3.70001
4,071.992	27.040	245.100	4,035.862	2,885.864	-162.797	-300.414	286.783	4.16856	4.03372	-2.47192
4,161.991	29.720	245.960	4,115.038	2,965.041	-180.501	-339.351	324.219	3.01215	2.97778	0.95556
4,250.991	31.610	248.870	4,191.594	3,041.596	-197.899	-381.261	364.642	2.69957	2.12360	3.26967
4,340.991	30.920	247.530	4,268.524	3,118.526	-215.239	-424.629	406.524	1.08849	-0.76667	-1.48889



**EQT**  
Survey Report

Database:	EDM_Definitive	Local Co-ordinate Reference:	Well M05H - Slot M05H
Company:	EQT (Chevron Data) 02-13-21	TVD Reference:	GL at 1125.00' & 25' KB @ 1149.998usft
Project:	Marshall County, WV Chevron	MD Reference:	GL at 1125.00' & 25' KB @ 1149.998usft
Site:	Hines Pad EQT	North Reference:	True
Well:	M05H	Survey Calculation Method:	Minimum Curvature
Wellbore:	OH		
Design:	Hines M05H As Drilled		

**Survey**

Measured Depth (usft)	Inclination (°)	Azimuth (°)	Vertical Depth (usft)	Subsea Depth (usft)	+N/-S (usft)	+E/-W (usft)	Vertical Section (usft)	Dogleg Rate (°/100usft)	Build Rate (°/100usft)	Turn Rate (°/100usft)
4,429.991	30.180	245.040	4,345.172	3,195.174	-233.420	-466.043	446.391	1.64715	-0.83146	-2.79776
4,519.991	32.300	245.650	4,422.118	3,272.120	-252.883	-508.464	487.163	2.38162	2.35556	0.67778
4,608.991	31.960	245.720	4,497.486	3,347.489	-272.373	-551.599	528.644	0.38431	-0.38202	0.07865
4,698.990	31.050	246.460	4,574.219	3,424.222	-291.438	-594.592	570.016	1.09860	-1.01111	0.82222
4,787.990	29.440	249.920	4,651.108	3,501.110	-308.117	-636.183	610.178	2.66527	-1.80899	3.88765
4,877.990	27.510	249.840	4,730.216	3,580.218	-322.875	-676.472	649.192	2.14487	-2.14445	-0.08889
4,966.990	28.530	247.670	4,808.785	3,658.787	-338.035	-715.430	686.846	1.62017	1.14607	-2.43821
5,055.990	32.910	245.490	4,885.279	3,735.282	-356.150	-757.111	726.985	5.07721	4.92136	-2.44944
5,145.989	37.110	247.540	4,958.980	3,808.982	-376.676	-804.471	772.598	4.84562	4.66668	2.27778
5,234.989	36.930	249.670	5,030.043	3,880.045	-396.223	-854.357	820.805	1.45504	-0.20225	2.39326
5,323.989	34.990	248.780	5,102.078	3,952.081	-414.750	-903.221	868.074	2.25744	-2.17978	-1.00000
5,371.989	33.650	249.260	5,141.721	3,991.723	-424.441	-928.489	892.507	2.84802	-2.79167	1.00000
5,407.989	31.770	248.860	5,172.010	4,022.013	-431.392	-946.658	910.077	5.25681	-5.22223	-1.11111
5,497.989	31.730	246.240	5,248.546	4,098.548	-449.473	-990.418	952.293	1.53242	-0.04444	-2.91112
5,587.989	31.730	245.100	5,325.094	4,175.097	-468.973	-1,033.545	993.765	0.66616	0.00000	-1.26667
5,676.988	31.680	245.720	5,400.813	4,250.815	-488.436	-1,076.076	1,034.646	0.37040	-0.05618	0.69663
5,766.988	31.640	247.790	5,477.421	4,327.423	-507.078	-1,119.475	1,076.456	1.20799	-0.04444	2.30000
5,855.988	31.690	249.950	5,553.174	4,403.176	-523.917	-1,163.048	1,118.581	1.27523	0.05618	2.42697
5,944.988	31.600	250.550	5,628.941	4,478.943	-539.696	-1,206.995	1,161.162	0.36787	-0.10112	0.67416
6,034.988	31.790	249.990	5,705.518	4,555.520	-555.659	-1,251.504	1,204.288	0.38915	0.21111	-0.62222
6,123.987	31.740	252.930	5,781.192	4,631.194	-570.554	-1,295.913	1,247.398	1.73979	-0.05618	3.30338
6,213.987	32.000	257.310	5,857.634	4,707.636	-582.743	-1,341.813	1,292.207	2.58530	0.28889	4.86668
6,303.987	34.660	271.260	5,932.936	4,782.938	-587.426	-1,390.744	1,340.622	8.99529	2.95556	15.50003
6,392.987	38.510	280.020	6,004.436	4,854.438	-582.043	-1,443.386	1,393.524	7.28018	4.32585	9.84272
6,482.987	44.210	284.600	6,071.975	4,921.978	-569.245	-1,501.404	1,452.365	7.16729	6.33335	5.08890
6,571.987	50.700	291.950	6,132.167	4,982.169	-548.514	-1,563.484	1,515.873	9.48853	7.29215	8.25844
6,661.986	57.140	297.110	6,185.164	5,035.167	-518.226	-1,629.528	1,584.081	8.52111	7.15557	5.73334
6,750.986	63.280	302.220	6,229.382	5,079.385	-479.944	-1,696.525	1,653.864	8.50719	6.89889	5.74158
6,840.986	69.990	308.620	6,265.086	5,115.088	-432.026	-1,763.702	1,724.577	9.90541	7.45557	7.11113
<b>Top of Marcellus@6257' TVD</b>										
6,926.986	76.230	313.408	6,290.073	5,140.075	-378.025	-1,825.705	1,790.608	9.00004	7.25636	5.56775
6,929.986	76.450	313.570	6,290.781	5,140.783	-376.019	-1,827.820	1,792.873	9.00004	7.31801	5.39154
7,018.986	87.380	316.980	6,303.283	5,153.285	-313.493	-1,889.698	1,859.445	12.85163	12.28092	3.83147
<b>LP/ Deepest Point of Well=7019' MD/ 6303' TVD</b>										
7,019.000	87.380	316.980	6,303.284	5,153.286	-313.483	-1,889.708	1,859.455	0.00000	0.00000	0.00000
7,108.985	93.670	320.680	6,302.458	5,152.461	-245.795	-1,948.903	1,923.756	8.10852	6.98999	4.11176
7,197.985	90.830	320.100	6,298.965	5,148.967	-177.289	-2,005.596	1,985.626	3.25677	-3.19102	-0.65169
7,287.985	89.780	319.000	6,298.485	5,148.488	-108.805	-2,063.984	2,049.184	1.68963	-1.16667	-1.22222
7,376.985	90.620	318.810	6,298.175	5,148.177	-41.734	-2,122.484	2,112.743	0.96766	0.94382	-0.21348
7,466.985	90.430	319.470	6,297.350	5,147.352	26.331	-2,181.360	2,176.754	0.76309	-0.21111	0.73333
7,555.985	90.680	317.720	6,296.488	5,146.490	93.080	-2,240.217	2,240.645	1.98617	0.28090	-1.96630
7,645.984	90.430	318.060	6,295.616	5,145.619	159.843	-2,300.564	2,306.021	0.46890	-0.27778	0.37778
7,734.984	90.550	320.950	6,294.855	5,144.857	227.515	-2,358.351	2,368.916	3.24988	0.13483	3.24720



EQT  
Survey Report

Database:	EDM_Definitive	Local Co-ordinate Reference:	Well M05H - Slot M05H
Company:	EQT (Chevron Data) 02-13-21	TVD Reference:	GL at 1125.00' & 25' KB @ 1149.99usft
Project:	Marshall County, WV Chevron	MD Reference:	GL at 1125.00' & 25' KB @ 1149.99usft
Site:	Hines Pad EQT	North Reference:	True
Well:	M05H	Survey Calculation Method:	Minimum Curvature
Wellbore:	OH		
Design:	Hines M05H As Drilled		

Survey

Measured Depth (usft)	Inclination (°)	Azimuth (°)	Vertical Depth (usft)	Subsea Depth (usft)	+N/-S (usft)	+E/-W (usft)	Vertical Section (usft)	Dogleg Rate (°/100usft)	Build Rate (°/100usft)	Turn Rate (°/100usft)
7,824.984	90.650	320.590	6,293.912	5,143.915	297.226	-2,415.267	2,431.102	0.41513	0.11111	-0.40000
7,913.984	90.920	321.140	6,292.693	5,142.695	366.253	-2,471.433	2,492.488	0.68837	0.30337	0.61798
8,003.984	90.710	322.020	6,291.413	5,141.415	436.758	-2,527.355	2,553.744	1.00514	-0.23333	0.97778
8,092.983	90.620	321.820	6,290.380	5,140.382	506.809	-2,582.243	2,613.935	0.24641	-0.10112	-0.22472
8,182.983	91.020	321.130	6,289.092	5,139.094	577.211	-2,638.293	2,675.313	0.88611	0.44445	-0.76667
8,272.983	90.740	321.730	6,287.710	5,137.712	647.569	-2,694.399	2,736.741	0.73562	-0.31111	0.66667
8,361.983	91.080	321.690	6,286.296	5,136.299	717.415	-2,749.540	2,797.168	0.38466	0.38202	-0.04494
8,451.983	91.020	320.920	6,284.647	5,134.649	787.646	-2,805.795	2,858.737	0.85801	-0.06667	-0.85556
8,540.983	90.680	321.810	6,283.327	5,133.329	857.159	-2,861.356	2,919.556	1.07038	-0.38202	1.00000
8,630.982	90.620	323.160	6,282.306	5,132.308	928.540	-2,916.159	2,979.766	1.50139	-0.06667	1.50000
8,720.982	90.550	325.880	6,281.387	5,131.389	1,001.817	-2,968.389	3,037.559	3.02307	-0.07778	3.02223
8,809.982	90.580	327.520	6,280.509	5,130.511	1,076.198	-3,017.247	3,092.077	1.84292	0.03371	1.84270
8,899.982	90.580	328.130	6,279.598	5,129.600	1,152.372	-3,065.170	3,145.802	0.67774	0.00000	0.67778
8,988.982	90.580	329.120	6,278.697	5,128.699	1,228.353	-3,111.504	3,197.928	1.11230	0.00000	1.11236
9,078.981	90.680	329.400	6,277.707	5,127.710	1,305.703	-3,157.504	3,249.828	0.33034	0.11111	0.31111
9,168.981	90.620	325.380	6,276.686	5,126.688	1,381.494	-3,205.993	3,304.088	4.46689	-0.06667	-4.46668
9,258.981	90.490	319.680	6,275.813	5,125.816	1,452.892	-3,260.719	3,364.223	6.33469	-0.14444	-6.33335
9,347.981	90.520	315.500	6,275.029	5,125.031	1,518.587	-3,320.728	3,429.179	4.69658	0.03371	-4.69664
9,437.981	90.430	312.860	6,274.282	5,124.285	1,581.301	-3,385.264	3,498.415	2.93494	-0.10000	-2.93334
9,527.980	90.520	312.160	6,273.536	5,123.539	1,642.113	-3,451.605	3,569.303	0.78415	0.10000	-0.77778
9,616.980	90.710	314.610	6,272.581	5,122.583	1,703.239	-3,516.278	3,638.551	2.76092	0.21348	2.75281
9,705.980	90.120	316.900	6,271.936	5,121.938	1,766.989	-3,578.369	3,705.432	2.65699	-0.66292	2.57304
9,795.980	90.250	321.140	6,271.645	5,121.648	1,834.917	-3,637.377	3,769.564	4.71331	0.14444	4.71112
9,884.980	90.400	324.880	6,271.140	5,121.143	1,905.991	-3,690.915	3,828.489	4.20557	0.16854	4.20226
9,973.980	90.220	323.760	6,270.659	5,120.661	1,978.282	-3,742.824	3,885.885	1.27456	-0.20225	-1.25843
10,063.979	89.970	321.510	6,270.510	5,120.512	2,049.808	-3,797.440	3,945.920	2.51538	-0.27778	-2.50001
10,152.979	89.600	323.190	6,270.844	5,120.846	2,120.271	-3,851.802	4,005.619	1.93287	-0.41573	1.88764
10,242.979	90.680	334.930	6,270.623	5,120.625	2,197.328	-3,897.993	4,057.686	13.09932	1.20000	13.04447
10,331.979	90.980	340.870	6,269.332	5,119.335	2,279.743	-3,931.459	4,097.486	6.68197	0.33708	6.67417
10,421.979	91.420	333.080	6,267.445	5,117.447	2,362.491	-3,966.625	4,139.007	8.66745	0.48889	-8.65557
10,510.978	90.550	324.050	6,265.912	5,115.914	2,438.338	-4,012.987	4,191.150	10.19148	-0.97753	-10.14609
10,599.979	90.430	322.270	6,265.150	5,115.153	2,509.560	-4,066.345	4,249.908	2.00447	-0.13483	-2.00000
10,689.979	90.490	323.290	6,264.428	5,114.430	2,581.225	-4,120.782	4,309.774	1.13526	0.06667	1.13334
10,778.979	90.740	322.320	6,263.473	5,113.475	2,652.116	-4,174.581	4,368.945	1.12544	0.28090	-1.08989
10,868.979	91.260	314.360	6,261.899	5,111.902	2,719.291	-4,234.347	4,433.775	8.86194	0.57778	-8.84446



EQT  
Survey Report

Database:	EDM_Definitive	Local Co-ordinate Reference:	Well M05H - Slot M05H
Company:	EQT (Chevron Data) 02-13-21	TVD Reference:	GL at 1125.00' & 25' KB @ 1149.998usft
Project:	Marshall County, WV Chevron	MD Reference:	GL at 1125.00' & 25' KB @ 1149.998usft
Site:	Hines Pad EQT	North Reference:	True
Well:	M05H	Survey Calculation Method:	Minimum Curvature
Wellbore:	OH		
Design:	Hines M05H As Drilled		

Survey

Measured Depth (usft)	Inclination (°)	Azimuth (°)	Vertical Depth (usft)	Subsea Depth (usft)	+N/-S (usft)	+E/-W (usft)	Vertical Section (usft)	Dogleg Rate (°/100usft)	Build Rate (°/100usft)	Turn Rate (°/100usft)
10,957.97 9	90.740	314.050	6,260.346	5,110.348	2,781.334	-4,298.136	4,502.214	0.68019	-0.58427	-0.34832
11,047.978	90.770	315.560	6,259.160	5,109.162	2,844.749	-4,361.984	4,570.820	1.67797	0.03333	1.67778
11,136.978	90.710	317.390	6,258.011	5,108.013	2,909.273	-4,423.268	4,636.956	2.05712	-0.06742	2.05618
11,225.978	90.680	317.020	6,256.931	5,106.933	2,974.575	-4,483.728	4,702.331	0.41706	-0.03371	-0.41573
11,315.978	90.650	317.900	6,255.886	5,105.889	3,040.882	-4,544.573	4,768.168	0.97828	-0.03333	0.97778
11,404.978	90.430	317.400	6,255.048	5,105.050	3,106.654	-4,604.525	4,833.073	0.61375	-0.24719	-0.56180
11,494.977	90.860	316.200	6,254.034	5,104.037	3,172.255	-4,666.129	4,899.612	1.41627	0.47778	-1.33334
11,583.977	90.650	312.070	6,252.861	5,102.864	3,234.211	-4,729.985	4,968.111	4.64605	-0.23596	-4.64046
11,673.977	90.620	313.560	6,251.864	5,101.866	3,295.373	-4,795.999	5,038.700	1.65579	-0.03333	1.65556
11,762.977	90.400	316.130	6,251.071	5,101.074	3,358.127	-4,859.093	5,106.502	2.89809	-0.24719	2.88765
11,852.977	90.250	320.710	6,250.561	5,100.563	3,425.431	-4,918.806	5,171.289	5.09154	-0.16667	5.08890
11,941.977	90.800	325.210	6,249.745	5,099.747	3,496.450	-4,972.401	5,230.266	5.09359	0.61798	5.05619
12,031.97 6	90.650	325.740	6,248.606	5,098.608	3,570.593	-5,023.406	5,286.905	0.61198	-0.16667	0.58889
12,120.97 6	90.740	327.240	6,247.526	5,097.529	3,644.792	-5,072.536	5,341.680	1.68830	0.10112	1.68540
12,209.97 6	90.920	324.320	6,246.237	5,096.239	3,718.369	-5,122.576	5,397.313	3.28679	0.20225	-3.28091
12,299.97 6	90.800	321.480	6,244.886	5,094.888	3,790.136	-5,176.853	5,457.029	3.15802	-0.13333	-3.15556
12,388.97 6	90.920	317.960	6,243.549	5,093.552	3,858.015	-5,234.378	5,519.679	3.95692	0.13483	-3.95506
12,448.97 6	90.770	318.130	6,242.665	5,092.667	3,902.630	-5,274.486	5,563.149	0.37784	-0.25000	0.28333
<b>Final Survey=12449' MD/ 6243' TVD</b>										
12,449.00 0	90.770	318.130	6,242.664	5,092.667	3,902.649	-5,274.503	5,563.167	0.00000	0.00000	0.00000
<b>BHL=12474' MD/ 6242' TVD</b>										
12,473.97 5	90.770	318.130	6,242.329	5,092.331	3,921.245	-5,291.171	5,581.236	0.00000	0.00000	0.00000



**EQT**  
Survey Report

Database:	EDM_Definitive	Local Co-ordinate Reference:	Well M05H - Slot M05H
Company:	EQT (Chevron Data) 02-13-21	TVD Reference:	GL at 1125.00' & 25' KB @ 1149.998usft
Project:	Marshall County, WV Chevron	MD Reference:	GL at 1125.00' & 25' KB @ 1149.998usft
Site:	Hines Pad EQT	North Reference:	True
Well:	M05H	Survey Calculation Method:	Minimum Curvature
Wellbore:	OH		
Design:	Hines M05H As Drilled		

**Design Targets**

Target Name	Dip Angle (°)	Dip Dir. (°)	TVD (usft)	+N/-S (-106.752)	+E/-W (-157.950)	Northing (usft)	Easting (usft)	Latitude	Longitude
Hines 5H KOP	0.000	0.000	3,434.52 5	-106.752	-157.950	514,332.353	1,631,895.221	39.9059239	80.6999080°W
- actual wellpath misses target center by 0.426usft at 3444.962usft MD (3434.519 TVD, -106.618 N, -157.546 E)									
- Point									
Hines 5H BHL	0.000	0.000	6,242.29 7	3,921.110	-5,291.575	518,428.391	1,626,815.824	39.9169799	80.7182105°W
- actual wellpath misses target center by 0.428usft at 12473.975usft MD (6242.329 TVD, 3921.245 N, -5291.171 E)									
- Point									
Hines 5H LP	0.000	0.000	6,303.25 1	-313.618	-1,890.112	514,148.630	1,630,160.451	39.9053558	80.7060825°W
- actual wellpath misses target center by 0.390usft at 7019.165usft MD (6303.291 TVD, -313.362 N, -1889.820 E)									
- Point									

**Formations**

Measured Depth (usft)	Vertical Depth (usft)	Name	Lithology	Dip (°)	Dip Direction (°)
6,926.986	6,257.000	Top of Marcellus@6257' TVD		-5.0000	

**Design Annotations**

Measured Depth (usft)	Vertical Depth (usft)	Local Coordinates		Comment
		+N/-S (usft)	+E/-W (usft)	
3,445.000	3,434.557	-106.617	-157.546	KOP=3445' MD/ 3435' TVD
7,019.000	6,303.284	-313.483	-1,889.708	LP/ Deepest Point of Well=7019' MD/ 6303' TVD
12,449.000	6,242.664	3,902.649	-5,274.503	Final Survey=12449' MD/ 6243' TVD
12,473.975	6,242.329	3,921.245	-5,291.171	BHL=12474' MD/ 6242' TVD

Checked By: \_\_\_\_\_ Approved By: \_\_\_\_\_ Date: \_\_\_\_\_

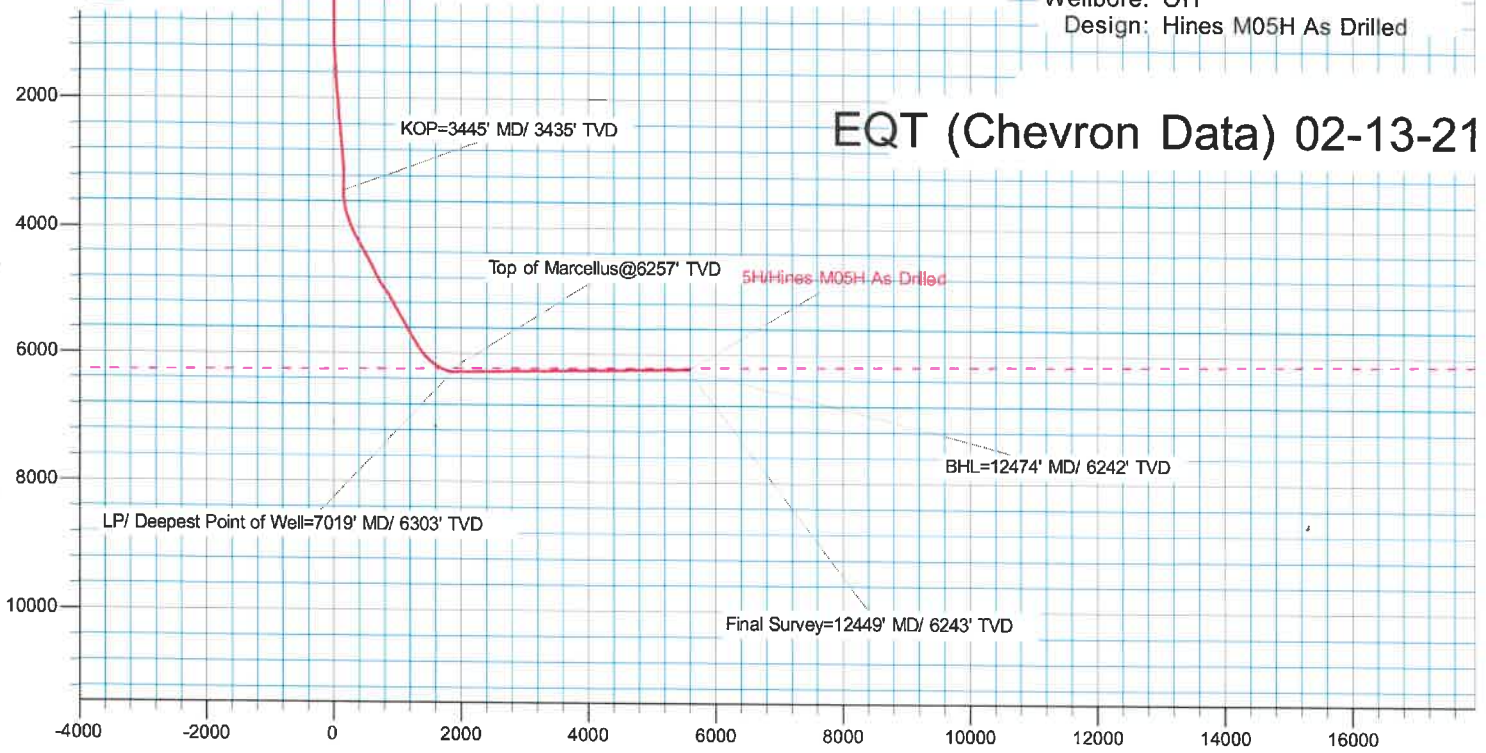




KB Elevation= GL at 1125.00' & 25' KB @ 1149.998usft  
 Ground Elevation= 1124.998  
 All measurements were taken from KB Elevation

Project: Marcellus County, PA - Chevron  
 Site: Hines Pad EQT  
 Well: M05H  
 Wellbore: OH  
 Design: Hines M05H As Drilled

# EQT (Chevron Data) 02-13-21



Surface Location: M05H							
		Ground Level: 1124.998					
+N/-S	+E/-W	Northing	Easting	Latitude	Longitude	Slot	
0.000	0.000	514436.988	1632054.582	39.9062169	80.6993450°W	M05H	
DESIGN TARGET DETAILS							
Name	TVD	Northing	Easting	Latitude	Longitude		
Hines 5H KOP	3434.525	514332.354	1631895.220	39.9059239	80.6999080°W		
Hines 5H BHL	6242.297	518428.390	1626815.824	39.9169799	80.7182105°W		
Hines 5H LP	6303.252	514148.631	1630160.451	39.9053558	80.7060825°W		

