

(BH) BOTTOM HOLE LONGITUDE: 80°47'30"
(TH) TOP HOLE LONGITUDE: 80°45'00"

(BH) 11,778'

(TH) 5,848'

(+) DENOTES LOCATION ON UNITED STATES TOPOGRAPHIC MAPS

(BH)

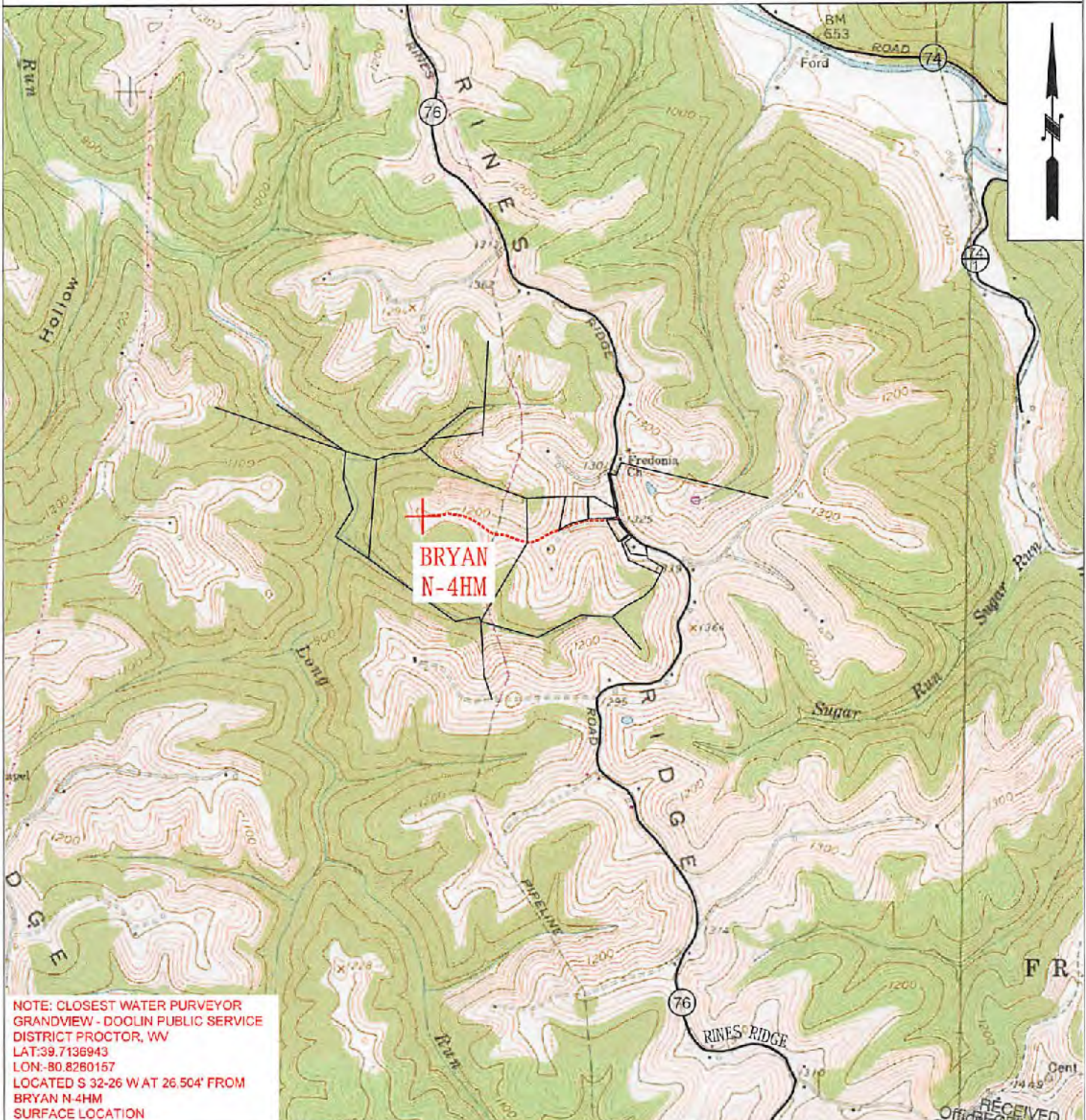
SEAL

COUNTY NAME
PERMIT

WW-9


SUPPLEMENT PG 2

PROPOSED BRYAN N-4HM



NOTE: CLOSEST WATER PURVEYOR
GRANDVIEW - DOOLIN PUBLIC SERVICE
DISTRICT PROCTOR, WV
LAT:39.7136943
LON:-80.8260157
LOCATED S 32-26 W AT 26.504' FROM
BRYAN N-4HM
SURFACE LOCATION

RECEIVED
Office of Oil and Gas

 TUG HILL OPERATING	OPERATOR 494510851 TUG HILL OPERATING, LLC 380 SOUTHPOINTE BLVD SUITE 200 CANONSBURG, PA 15317	TOPO SECTION POWHATAN POINT 7.5'	LEASE NAME BRYAN
	SCALE: 1" = 2000'	DATE: 10/25/17	JUL 11 2018 Environmental Protection