



---

west virginia department of environmental protection

---

Office of Oil and Gas  
601 57<sup>th</sup> Street, S.E.  
Charleston, WV 25304  
(304) 926-0450  
fax: (304) 926-0452

Harold D. Ward, Cabinet Secretary  
[www.dep.wv.gov](http://www.dep.wv.gov)

Monday, April 1, 2024  
PERMIT MODIFICATION APPROVAL  
Horizontal 6A / New Drill

EQT PRODUCTION COMPANY  
400 WOODCLIFF DR.

CANONSBURG, PA 15317

Re: Permit Modification Approval for HUDSON S-2HM  
47-051-02249-00-00

**Adding an AST to the pad**

EQT PRODUCTION COMPANY

The Office of Oil and Gas has reviewed the attached permit modification for the above referenced permit. The attached modification has been approved and well work may begin. Please be reminded that the oil and gas inspector is to be notified twenty-four (24) hours before permitted well work is commenced.

If there are any questions, please feel free to contact me at (304) 926- 0450.

A handwritten signature in blue ink, appearing to read "James A. Martin".

James A. Martin  
Chief

Operator's Well Number: HUDSON S-2HM  
Farm Name: CNX LAND LLC  
U.S. WELL NUMBER: 47-051-02249-00-00  
Horizontal 6A New Drill  
Date Modification Issued: 4/1/2024

Promoting a healthy environment.

04/05/2024

# Hudson Well Site

## Site Design, Construction Plan, & Erosion and Sediment Control Plans

### Tug Hill Operating Marshall County Meade District

Latitude 39.82881036°  
Longitude -80.67262857°  
Grave Creek Watershed

**Pertinent Site Information**  
Hudson Well Site  
Emergency Number: 304-845-1920  
Meade District, Marshall County, WV  
Watershed: Grave Creek Watershed  
Tug Hill Contact Number: 1-817-632-3400

**APPROVED**  
**WVDEP OOG**  
MODIFICATION  
4/1/2024



**Property Owner Information - Hudson Well Site**

Owner	TM	Parcel	Well Pad	Access Road	Topsoil Paving	AMB Clearing	Total Disturbed
Robert & Melissa White	3.13	-	0.35	0.17	0.01	1.34	4.13
CNX Land LLC	3.1	6.18	1.36	1.96	1.96	17.40	23.00
<b>Site Totals (Ac)</b>	<b>6.18</b>	<b>1.94</b>	<b>2.13</b>	<b>11.09</b>	<b>32.94</b>		

### Exhibit A: As-Built

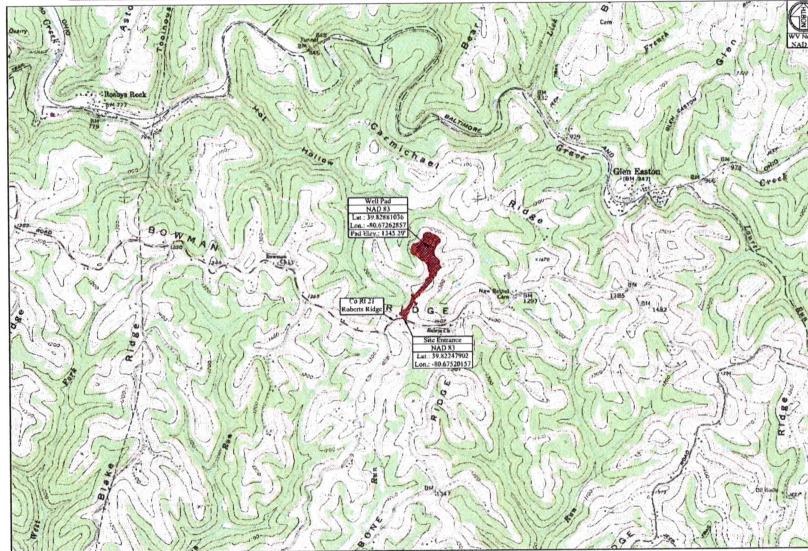
**Site Entrance**

WV NAD 83 N: 460144.78	Center of Well Pad	WV NAD 83 N: 460144.17
WV NAD 83 E: 443890.81	WV NAD 83 E: 443890.81	WV NAD 83 E: 443890.81
WV NAD 27 N: 460144.78	WV NAD 27 N: 460144.17	WV NAD 27 N: 460144.17
WV NAD 27 E: 443890.81	WV NAD 27 E: 443890.81	WV NAD 27 E: 443890.81
Lat. NAD 83: 39.82881036	Lat. NAD 83: 39.82881036	Lat. NAD 83: 39.82881036
Long. NAD 83: -80.67262857	Long. NAD 83: -80.67262857	Long. NAD 83: -80.67262857
UTM 17 NAD 83 N: 460144.78	UTM 17 NAD 83 N: 460144.17	UTM 17 NAD 83 N: 460144.17
UTM 17 NAD 83 E: 443890.81	UTM 17 NAD 83 E: 443890.81	UTM 17 NAD 83 E: 443890.81
UTM 17 NAD 27 N: 460144.78	UTM 17 NAD 27 N: 460144.17	UTM 17 NAD 27 N: 460144.17
UTM 17 NAD 27 E: 443890.81	UTM 17 NAD 27 E: 443890.81	UTM 17 NAD 27 E: 443890.81

**Center of Proposed AST**

WV NAD 83 N: 460144.17	WV NAD 83 E: 443890.81
WV NAD 27 N: 460144.17	WV NAD 27 E: 443890.81
Lat. NAD 83: 39.82881036	Lat. NAD 83: 39.82881036
Long. NAD 83: -80.67262857	Long. NAD 83: -80.67262857
UTM 17 NAD 83 N: 460144.17	UTM 17 NAD 83 E: 443890.81
UTM 17 NAD 27 N: 460144.17	UTM 17 NAD 27 E: 443890.81

**AST Depth**  
Proposed 17,000 lbs (17,000 lbs)  
Secondary containment



**WV State Plane Coordinate System**  
North Zone, NAD 83  
Elevation Based on NAVD83  
Established by Survey Grade GPS  
and OPLS Field Processing

**Access Road**

Surface Owner	TM	Parcel	Road Length	Type
Robert & Melissa White	3.13	1.36	1.36	New Access Road Construction
CNX and LLC	3.1	6.18	96.76	New Access Road Construction
CNX Land LLC	3.1	1.94	1.94	New Access Road Construction

**Disturbed Area**

Well Pad Construction	6.18 Ac.
Access Road Construction	2.94 Ac.
Topsoil Paving Material	2.13 Ac.
Additional Clearing	11.09 Ac.
Total Disturbed Area	23.34 Ac.

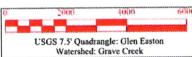
**Additional Information**

Total Disturbed Area (Estimated)	23.34 Ac.
Total Area of Access Road	2.94 Ac.

**Hudson Well Site Quantities**

Description	Est. Qty	Est. Price	Est. Value	Max. Qty	Length of Slope
Well Pad Access Road	1,842.24	4,098.75	244.50	11.3%	261.50'
Well Pad Access Road Grading	0.07	79.64	7.96	N/A	N/A
Access Road Top	0.01	201.82	201.79	20.14%	75.33'
Topsoil Paving	2.13	77.64	17.24	25.6%	25.6%
Access Road Top	0.00	1,008.32	1,008.32	N/A	N/A
Topsoil Paving	1,842.24	1,039.18	1,951.56		
Total	3,794.68	16,654.18	3,951.53		

Well Pad	Hudson S-01M	Hudson S-02M	Hudson S-03M	Hudson S-04M	Hudson S-05M
WV NAD 83 N: 460144.78	WV NAD 83 N: 460144.17	WV NAD 83 N: 460144.17	WV NAD 83 N: 460144.17	WV NAD 83 N: 460144.17	WV NAD 83 N: 460144.17
WV NAD 83 E: 443890.81	WV NAD 83 E: 443890.81	WV NAD 83 E: 443890.81	WV NAD 83 E: 443890.81	WV NAD 83 E: 443890.81	WV NAD 83 E: 443890.81
WV NAD 27 N: 460144.78	WV NAD 27 N: 460144.17	WV NAD 27 N: 460144.17	WV NAD 27 N: 460144.17	WV NAD 27 N: 460144.17	WV NAD 27 N: 460144.17
WV NAD 27 E: 443890.81	WV NAD 27 E: 443890.81	WV NAD 27 E: 443890.81	WV NAD 27 E: 443890.81	WV NAD 27 E: 443890.81	WV NAD 27 E: 443890.81
Lat. NAD 83: 39.82881036	Lat. NAD 83: 39.82881036	Lat. NAD 83: 39.82881036	Lat. NAD 83: 39.82881036	Lat. NAD 83: 39.82881036	Lat. NAD 83: 39.82881036
Long. NAD 83: -80.67262857	Long. NAD 83: -80.67262857	Long. NAD 83: -80.67262857	Long. NAD 83: -80.67262857	Long. NAD 83: -80.67262857	Long. NAD 83: -80.67262857
UTM 17 NAD 83 N: 460144.78	UTM 17 NAD 83 N: 460144.17	UTM 17 NAD 83 N: 460144.17	UTM 17 NAD 83 N: 460144.17	UTM 17 NAD 83 N: 460144.17	UTM 17 NAD 83 N: 460144.17
UTM 17 NAD 83 E: 443890.81	UTM 17 NAD 83 E: 443890.81	UTM 17 NAD 83 E: 443890.81	UTM 17 NAD 83 E: 443890.81	UTM 17 NAD 83 E: 443890.81	UTM 17 NAD 83 E: 443890.81
UTM 17 NAD 27 N: 460144.78	UTM 17 NAD 27 N: 460144.17	UTM 17 NAD 27 N: 460144.17	UTM 17 NAD 27 N: 460144.17	UTM 17 NAD 27 N: 460144.17	UTM 17 NAD 27 N: 460144.17
UTM 17 NAD 27 E: 443890.81	UTM 17 NAD 27 E: 443890.81	UTM 17 NAD 27 E: 443890.81	UTM 17 NAD 27 E: 443890.81	UTM 17 NAD 27 E: 443890.81	UTM 17 NAD 27 E: 443890.81



**Site Locations (NAD 27)**

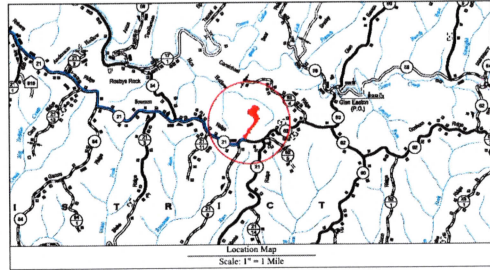
Structure	Latitude (DD)	Longitude (DD)
Site Entrance	39.82881036	-80.67262857
Center of Well Pad	39.82881036	-80.67262857

**Site Locations (NAD 83)**

Structure	Latitude (DD)	Longitude (DD)
Site Entrance	39.82881036	-80.67262857
Center of Well Pad	39.82881036	-80.67262857

#### Approach Routes:

From the intersection of WV Rt 2 and 12th Street in Mountainville, WV. Travel South on WV Rt 2 for 1.3 mi. Turn Left onto WV Rt 2 AB (Round Bottom Hill Rd). Follow WV Rt 2 AB for 1.5 mi. Turn Right onto Co Rt 21 (Roberts Ridge Rd). Follow Co Rt 21 for 8.9 mi. The site entrance will be on the Left (North) side of the road.



**Well Location Restrictions**

All Pad construction complete with the following restrictions:

- \*25' from an existing well or developed spring used for human or domestic animals.
- \*25' from an occupied dwelling or barn greater than 2,000 sq feet for poultry or dairy construction from the center of the pad.
- \*50' from the edge of disturbance or a normally rippling stream stream.
- \*1,000' of a surface or ground water banks to a public water supply.

(Well Location Restrictions of WV Code 22-6A-12)



**Sheet**

Sheet	Description
V1	Cover Sheet
NI-N4	Schedule of Quantities
1	Site Notes
2	Pre-Construction Site Conditions
3	Site Soil Map
4	Overall Plan View
5-7	Plan View
8-9	Cross Sections - Well Pad
10-11	Cross Sections - Access Road
Q1-Q2	Geotechnical Exhibit
L1	Landowner Disturbed Area Exhibit
LI	Site Reclamation
M1-M3	Production Exhibit
D1-D2	Erosion and Sediment Control Details
R1	Access Road Details
P1	Pad Details

**Scale:** As Shown  
**Designed By:** J.S.  
**File No.:**  
**Sheet 1 of 11**

**Project Contacts**

**Tug Hill Operating**  
Jonathan White - Regulatory Analyst  
734-445-2000 EXT. 304-845-7576 Cell  
(Email) JWhite - VP Production  
817-632-5700 Off.

**Survey and Engineer**  
Kearati Kelly  
304-736-6955 Cell  
John P. See  
304-842-0220 Off.  
Zackary Summerfield  
304-736-6955 Cell

**Soil/Bathymetry Consultant**  
American Geospatial, Inc.  
Kuan Patel  
304-340-4777 Off.

**Tag Hill Operating, LLC**  
40 Southpointe Blvd.  
Southpointe Plaza B1, Suite 200  
Cranberry, PA 15117

**Environmental:**  
Watershed delineation as provided by Arthur Folegny  
dated November 6, 2018

**Topographic Information:**  
The topographic information shown herein is based on aerial photography by Blue Mountain Aerial Mapping, Inc., WV

**MISS UTILITY OF WEST VIRGINIA**  
1-800-245-8484  
West Virginia State Line  
8400 8th Street, S.W., Raleigh, NC 27601  
www.missutility.com

**811**  
Know what's below.  
Call before you dig.

**WVDEP Website files show that there are no active and/or abandoned gas wells within the AOI**

**RECEIVED**  
**Office Of Oil and Gas**  
**FEB 27 2024**  
**Under Cover**  
3/19/2024

**WV Department of Environmental Protection**

**TUG HILL OPERATING**

**THIS DOCUMENT PREPARED FOR TUG HILL OPERATING**

**K&S Surveying**  
304-736-6955 Cell  
304-842-0220 Off.

**Hudson Well Site**  
Meade District, Marshall County, WV

**Cover Sheet**  
Hudson Well Site  
Meade District, Marshall County, WV

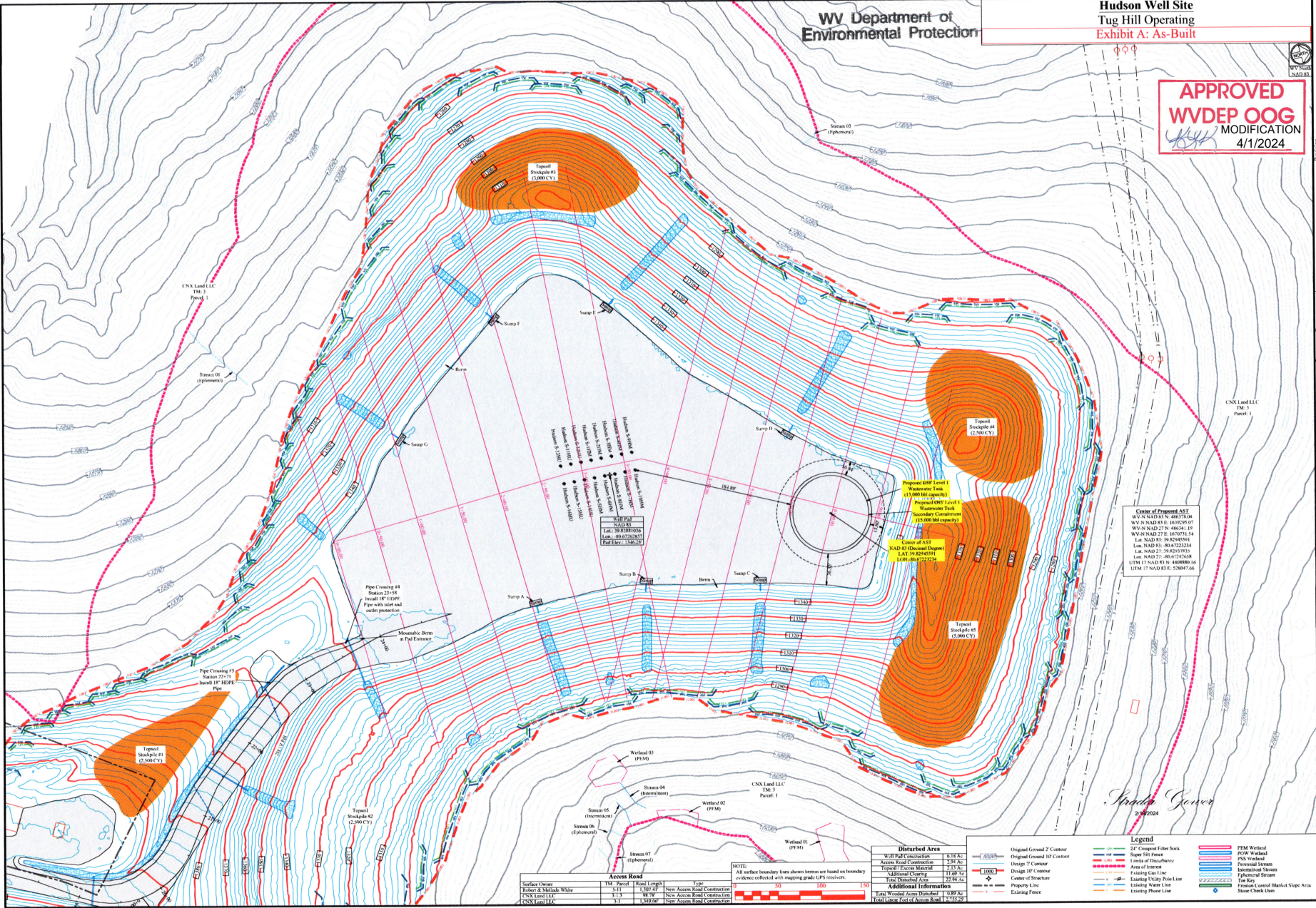
**Scale:** As Shown  
**Designed By:** J.S.  
**File No.:**  
**Sheet 1 of 11**

FEB 27 2024

WV Department of  
Environmental Protection

Hudson Well Site  
Tug Hill Operating  
Exhibit A: As-Built

APPROVED  
WVDEP OOG  
MODIFICATION  
4/1/2024



SECTION  
AS-Built - Proposed ASU Location

DATE  
02/18/2024

TUG HILL  
OPERATING

THIS DOCUMENT  
PREPARED FOR  
TUG HILL  
OPERATING

K-S  
SURVEYING  
INC.

Site Plan  
Hudson Well Site  
Menafe District  
Marshall County, WV

Date: 03/04/2021  
Scale: As Shown  
Designed By: JS  
File No:  
Sheet 7 of 11