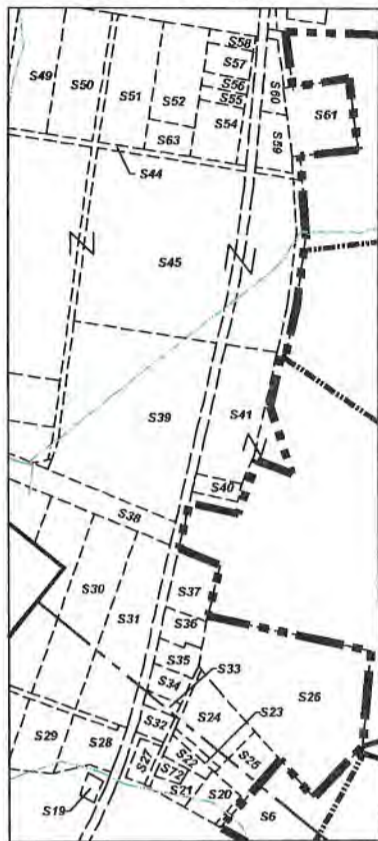


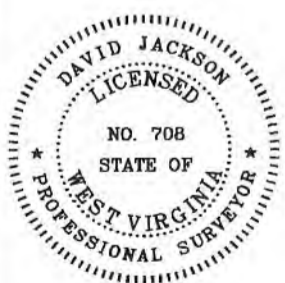
**GOUDY LEASE
WELL 1S-4HM
730.5983± ACRES**



**Detail "A"
SCALE 1"=1000'**



RECEIVED
Office of Oil and Gas
JUN 24 2020
WV Department of
Environmental Protection



P.S. 708 *David L Jackson*

Number	TAX MAP -PARCEL	SURFACE OWNER	ACRES
S1	C 05-28-12	TH Exploration III, LLC	20.226
S2	D 05-28-11	Carol A. Martin	24.681
S3	E 05-27-19	Covestro, LLC	33.786
S4	F 05-27-20	Covestro LLC	93.027
S5	G 05-27-20.1	Appalachian Power Co.	43.973
S6	H 05-27-27	James Andrew & Karen Lynne Richmond	8.9353
S7	J 05-27-25	James Andrew & Karen Lynne Richmond	41.35
S8	05-26-4.5	Eric Jay Booth	74.388
S9	05-26-19	Eric Jay Booth & Karrel S. Booth	50.0
S10	05-27-23	Robert F. Rothlisberger	35.77
S11	12-01-7.1	Harry Wayman Estate	2.0
S12	K 12-01-04	Robert F. Rothlisberger	6.0
S13	12-01-03	Charles D. & Edith Feenerty Harrison	7.8
S14	12-01-02	James Andrew & Karen Lynne Richmond	2.7
S15	L 12-01-05	Irvin L. Hoyt, Jr. & David L. Hoyt	36.8
S16	12-01-06	Mona Parsons, et al	52.75
S17	12-01-16	Vivian A. Parsons, et al	5.125
S18	12-01-01	Covestro, LLC	135.0
S19	12-01-1.7	Colombia Gas Transmission, Corp.	0.15
S20	12-23-15	Paul E. & Donna Jo Cain	0.70
S21	12-23-15.1	Robert F. Rothlisberger	0.47
S22	12-23-13	Paul E. & Donna Jo Cain	0.38
S23	05-27-27.2	Paul E. Cain, et ux	0.1767
S24	05-27-27.1	Donald P. Cain	1.645
S25	05-27-27.3	Paul E. Cain, et ux	1.018
S26	05-27-28	Covestro, LLC	8.0
S27	12-23-12	Paul E. & Donna Jo Cain	0.37
S28	12-23-11	Covestro, LLC	1.25
S29	12-23-10	Covestro, LLC	1.28
S30	12-23-05	Covestro, LLC	3.69
S31	05-27-40	Covestro, LLC	3.36
S32	12-23-06	Covestro, LLC	0.34
S33	12-27-44	Covestro, LLC	0.21
S34	05-27-43	Covestro, LLC	0.63
S35	05-27-42	Covestro, LLC	0.52
S36	05-27-42.1	Covestro, LLC	0.52
S37	05-27-41	Martha Jean Arrick	0.99
S38	05-27-31.2	Appalachian Power Co.	3.33
S39	05-27-31	Covestro, LLC	16.1
S40	05-27-30	Covestro, LLC	0.371
S41	05-27-31.1	Covestro, LLC	3.0
S42	05-27-32.2	Covestro, LLC	3.95
S43	05-27-29	Covestro, LLC	9.0
S44	05-27-45	Covestro, LLC	0.3627
S45	05-27-32	Covestro, LLC	33.53
S46	05-27-03	Covestro, LLC	1.27
S47	05-27-04	Covestro, LLC	2.52
S48	05-27-05	Covestro, LLC	2.52
S49	05-27-06	Covestro, LLC	2.52
S50	05-27-07	Covestro, LLC	2.52
S51	05-27-08	Covestro, LLC	2.52
S52	05-27-09	Covestro, LLC	1.87
S53	05-27-10	Covestro, LLC	0.52
S54	05-27-12	Covestro, LLC	1.0
S55	05-27-13	Covestro, LLC	0.34
S56	05-27-14	Covestro, LLC	0.25
S57	05-27-15	Covestro, LLC	0.47
S58	05-27-16	Covestro, LLC	0.23
S59	05-27-18	Covestro, LLC	0.97
S60	05-27-17	Covestro, LLC	0.88
S61	05-27-19.3	Cemetery	2.0
S62	05-27-02	Covestro, LLC	28.099
S63	05-27-19.2	Wheeling Electric Co.	0.922
S64	05-28-12.2	Covestro, LLC	3.1
S65	05-28-12.3	Covestro, LLC	18.784
S66	05-28-13.1	Air Products & Chemicals, Inc	5.522
S67	05-27-19.1	Covestro, LLC	21.267
S68	05-27-11	Covestro, LLC	0.03
S69	A 05-28-13	TH Exploration III, LLC	70.0
S70	05-28-13.2	Covestro, LLC	11.02
S71	05-28-1.1	Covestro, LLC	5.2217
S72	05-28-1.4	Eagle Natrium, LLC	11.69
S73	05-31-3.1	Eagle Natrium, LLC	98.613
S74	12-01-19	Steven J. & Susan L. Hafer	36.5
S75	12-01-28	Steven J. & Susan L. Hafer	88.39
S76	12-01-18	Travis Darrell Blake & Angela Dawn Mitchell	48.4
S77	12-01-15.3	Daniel L. & Vickie L. Williams	7.0
S78	12-01-1.1	W.V.D.O.H.	10.59



**TUG HILL
OPERATING**

OPERATOR'S
WELL #: Goudy 1S-4HM
DISTRICT: Franklin
COUNTY: Marshall
STATE: WV

WELL PLAT
PAGE 2 OF 2
DATE: 3/25/2018

WW-9

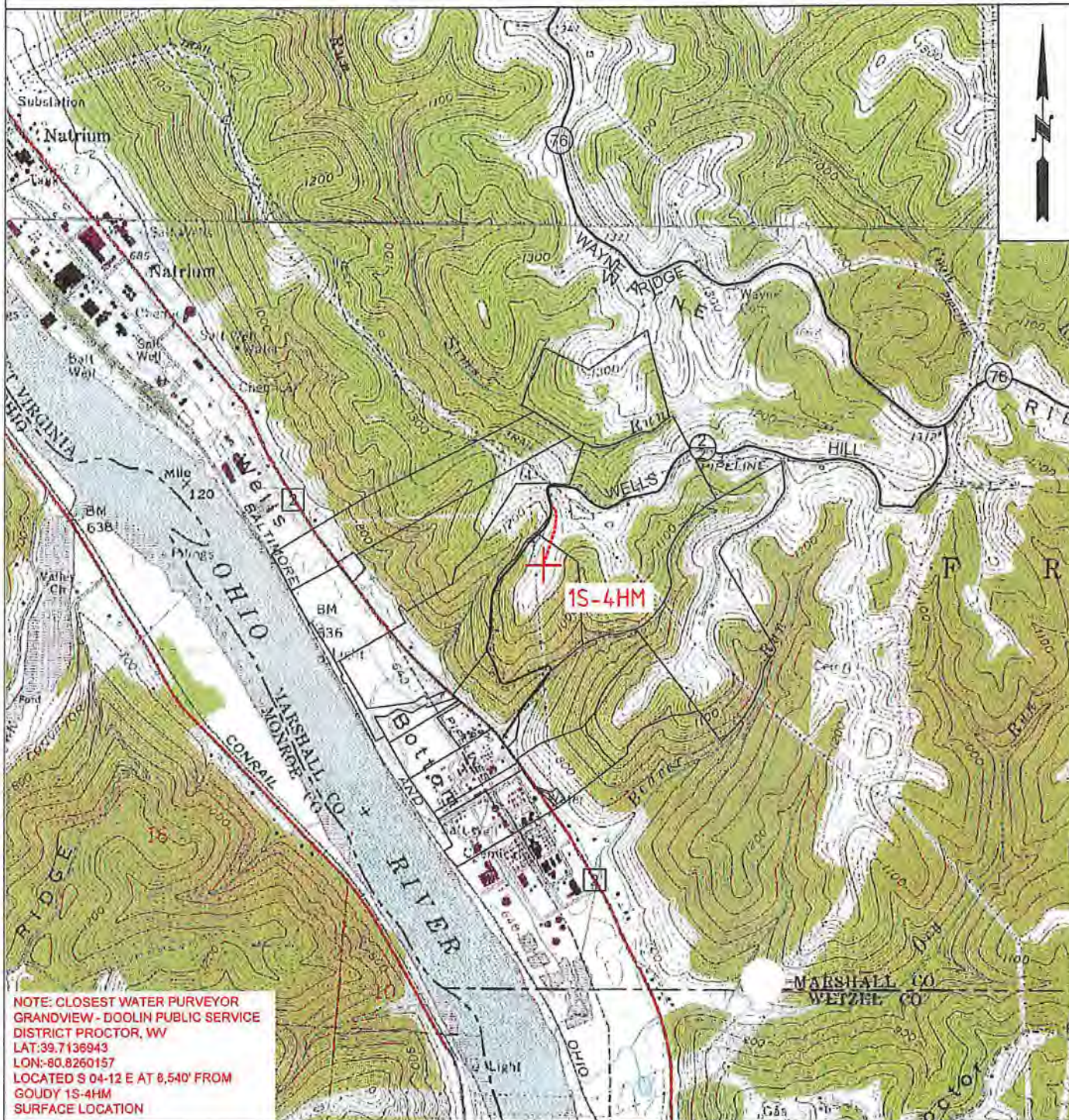
PROPOSED GOUDY 1S-4HM

SUPPLEMENT PG 2


Office of Oil and Gas

JUN 24 2018

WV Department of
Environmental Protection



NOTE: CLOSEST WATER PURVEYOR
 GRANDVIEW - DOOLIN PUBLIC SERVICE
 DISTRICT PROCTOR, WV
 LAT: 39.7136943
 LON: -80.8260157
 LOCATED S 04-12 E AT 8,540' FROM
 GOUDY 1S-4HM
 SURFACE LOCATION

 TUG HILL OPERATING	OPERATOR	494510851	TOPO SECTION	LEASE NAME
	TUG HILL OPERATING, LLC 380 SOUTHPOINTE BLVD SUITE 200 CANONSBURG, PA 15317		NEW MARTINSVILLE 7.5'	GOUDY
	SCALE:		1" = 2000'	DATE:
				DATE: 05/21/2018