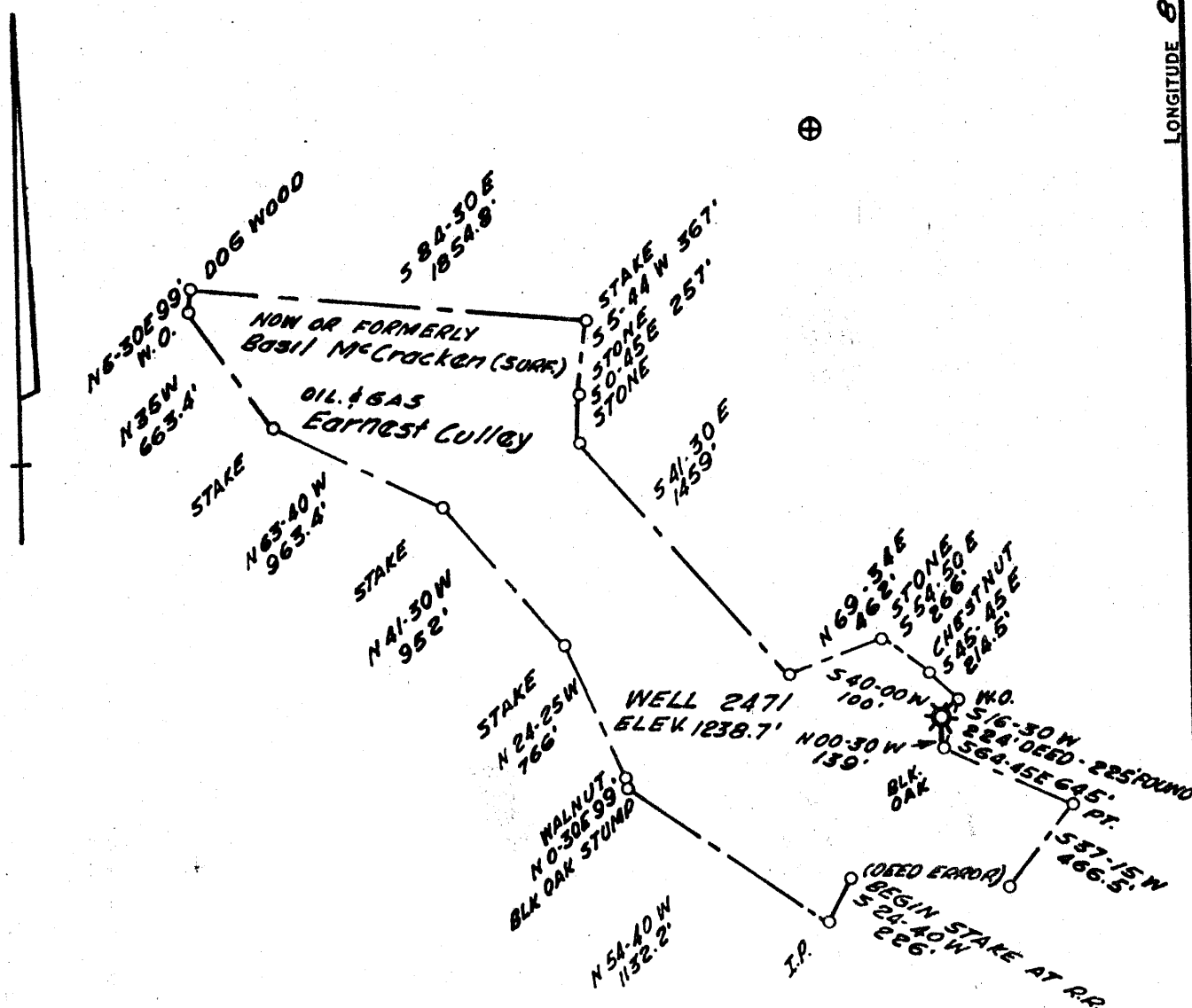


59-50-001

LONGITUDE 80-30-00



2.65 S
2.15 W

Well Reassigned:
47-051-02525

COAL OWNED BY CONSOLIDATION COAL CO.

- ☐ NEW LOCATION
☐ RECONDITION
☐ DRILL DEEPER
☒ ABANDONMENT

"I, the undersigned, hereby certify that this map is correct to the best of my knowledge and belief and shows all the information required by paragraph 6 of the rules and regulations of the oil and gas section of the mining laws of West Virginia."

Minimum degree of accuracy is one part in 200 *J. B. C. Smith* Pa. 7842-

200

Signed

COMPANY THE MANUFACTURERS LIGHT & HEAT CO.
ADDRESS 800 UNION TRUST BLDG. PGH. PA
FARM EARNEST CULLEY
MAP Q-25-25 ACRES 480 LEASE NO. 2879
WELL (FARM) NO. NO. 2 SERIAL NO. 2471
ELEVATION (SPIRIT LEVEL) 1238.7
QUADRANGLE CAMERON
COUNTY MARSHALL DISTRICT LIBERTY
POINT OF PROVEN ELEVATION U.S.G.S B.M. AT WOODRUFF
ELEV. 966.09
FILE NO. Y-28-722
DATE NOV 17.69 DRAWING NO. SCALE 1" = 800'

STATE OF WEST VIRGINIA
DEPARTMENT OF MINES
OIL AND GAS DIVISION
CHARLESTON
WELL LOCATION MAP

FILE NO. Mars-447 (A)

+ DENOTES LOCATION OF WELL ON UNITED STATES TOPOGRAPHIC MAPS. SCALE 1 TO 62,500. LATITUDE AND LONGITUDE LINES BEING REPRESENTED BY BORDER LINES AS SHOWN.

— DENOTES ONE INCH SPACES ON BORDER LINE OF ORIGINAL TRACING