



---

west virginia department of environmental protection

---

Office of Oil and Gas  
601 57<sup>th</sup> Street, S.E.  
Charleston, WV 25304  
(304) 926-0450  
fax: (304) 926-0452

Harold D. Ward, Cabinet Secretary  
[www.dep.wv.gov](http://www.dep.wv.gov)

Wednesday, October 22, 2025  
PERMIT MODIFICATION APPROVAL  
Horizontal 6A / New Drill

CNX GAS COMPANY LLC  
1000 HORIZON VUE DR.

CANONSBURG, PA 15370

Re: Permit Modification Approval for MAJ8 JHSM  
47-051-02550-00-00

Extended lateral

CNX GAS COMPANY LLC

The Office of Oil and Gas has reviewed the attached permit modification for the above referenced permit. The attached modification has been approved and well work may begin. Please be reminded that the oil and gas inspector is to be notified twenty-four (24) hours before permitted well work is commenced.

If there are any questions, please feel free to contact me at (304) 926- 0450.

A handwritten signature in black ink, reading "Jason Harmon".

H. Jason Harmon  
Acting Chief

Operator's Well Number: MAJ8 JHSM  
Farm Name: JOHN S KUTIS AND SYLVIA M KUTIS, TRUSTEES  
U.S. WELL NUMBER: 47-051-02550-00-00  
Horizontal 6A New Drill  
Date Modification Issued: 10/22/2025

Promoting a healthy environment.

10/24/2025

STATE OF WEST VIRGINIA  
DEPARTMENT OF ENVIRONMENTAL PROTECTION, OFFICE OF OIL AND GAS  
WELL WORK PERMIT APPLICATION

1) Well Operator: CNX GAS COMPANY LLC 494458046 MARSHALL WEBSTER MAJORSVILLE  
Operator ID County District Quadrangle

2) Operator's Well Number: MAJ8JHSM Well Pad Name: MAJ8

3) Farm Name/Surface Owner: JOHN S. KUTIS, ET UX., ET AL. Public Road Access: LONE OAK RD

4) Elevation, current ground: 1190.50 Elevation, proposed post-construction: \_\_\_\_\_

5) Well Type (a) Gas X Oil \_\_\_\_\_ Underground Storage \_\_\_\_\_  
Other \_\_\_\_\_

(b) If Gas Shallow X Deep \_\_\_\_\_  
Horizontal X \_\_\_\_\_

RECEIVED  
Office of Oil and Gas

OCT 02 2025

WV Department of  
Environmental Protection

6) Existing Pad: Yes or No NO

7) Proposed Target Formation(s), Depth(s), Anticipated Thickness and Expected Pressure(s):  
Target formation is Marcellus Shale @ 6,603' - 6,652 TVD, 49' thick, expected formation pressure ~4600 psi

8) Proposed Total Vertical Depth: 6,603' TVD at TD, depending on formation dip

9) Formation at Total Vertical Depth: Marcellus Shale (will not penetrate Onondaga)

10) Proposed Total Measured Depth: 20,217' MD at TD

11) Proposed Horizontal Leg Length: 11,696'

12) Approximate Fresh Water Strata Depths: 55', 344'

13) Method to Determine Fresh Water Depths: Utilizing offset well data and nearby features

14) Approximate Saltwater Depths: 1347', 1502'

15) Approximate Coal Seam Depths: 422'-424', 425'-428', 622'-626', 702'-704', 705'-710', 1,107'-1,108', 1,311'-1,312', 1,387'-1,388', 1,459'-1,461'

16) Approximate Depth to Possible Void (coal mine, karst, other): 705'-710' is in Mine Pillar

17) Does Proposed well location contain coal seams  
directly overlying or adjacent to an active mine? Yes X No \_\_\_\_\_

(a) If Yes, provide Mine Info: Name: OHIO COUNTY MINE  
Depth: Pittsburgh #8 coal seam bottom depth 710'  
Seam: PITTSBURGH #8 SEAM  
Owner: OHIO COUNTY COAL RESOURCES, INC.

*Strader Gower*  
9/17/2025

WW-6B  
(04/15)

API NO. 47- 051 - 02550

OPERATOR WELL NO. MAJ8JHSM

Well Pad Name: MAJ8

18)

**CASING AND TUBING PROGRAM**

<b>TYPE</b>	<b><u>Size</u> <u>(in)</u></b>	<b><u>New</u> <u>or</u> <u>Used</u></b>	<b><u>Grade</u></b>	<b><u>Weight per ft.</u> <u>(lb/ft)</u></b>	<b><u>FOOTAGE: For</u> <u>Drilling (ft)</u></b>	<b><u>INTERVALS:</u> <u>Left in Well</u> <u>(ft)</u></b>	<b><u>CEMENT:</u> <u>Fill-up</u> <u>(Cu. Ft.)/CTS</u></b>
Conductor	20	New	L/S	<94	69	40	150 / CTS
Fresh Water	13.375	New	J-55	54.5	1,142	1,113	935 / CTS
Coal	13.375	New	J-55	54.5	1,142	1,113	935 / CTS
Intermediate	9.625	New	J-55	36	2,273	2,244	760 / CTS
Production	5.5	New	P-110	20	20,217	20,188	4320 TOC @ 2073'
Tubing	2.375	New	J-55	4.7	Above assumes RF = 29'	TBD	N/A
Liners	N/A						

<b>TYPE</b>	<b><u>Size (in)</u></b>	<b><u>Wellbore</u> <u>Diameter (in)</u></b>	<b><u>Wall</u> <u>Thickness</u> <u>(in)</u></b>	<b><u>Burst Pressure</u> <u>(psi)</u></b>	<b><u>Anticipated</u> <u>Max. Internal</u> <u>Pressure (psi)</u></b>	<b><u>Cement</u> <u>Type</u></b>	<b><u>Cement</u> <u>Yield</u> <u>(cu. ft./k)</u></b>
Conductor	20	30	.375	N/A	N/A	Type 1	1.18
Fresh Water	13.375	17.5	.380	2,730	<500	Class A	1.19
Coal	13.375	17.5	.380	2,730	<500	Class A	1.19
Intermediate	9.625	12.25	.352	3,520	<2,815	Class A	1.19
Production	5.5	8.75 x 8.5	.361	14,340	~11,000	Class A or H	1.10
Tubing	2.375	N/A	.190	7,700	N/A	N/A	N/A
Liners							

RECEIVED  
Office of Oil and Gas

OCT 02 2025

**PACKERS**

WV Department of  
Environmental Protection

Kind:	N/A			
Sizes:				
Depths Set:				

*Strader Gower*  
9/17/2025

OCT 02 2025

WV Department of  
Environmental Protection

API NO. 47- 051 - 02550

OPERATOR WELL NO. MAJ8JHSM

Well Pad Name: MAJ8

19) Describe proposed well work, including the drilling and plugging back of any pilot hole:

Utilize conductor rig to set 20" conductor into solid rock and cement back to surface. MIRU drilling rig. Air drill 17-1/2" hole. Run and cement 13-3/8" fresh water casing. Note that the FW/coal casing will be set just above elevation - the casing will NOT be set below ground level (setting depth to isolate sloughing formations and red beds below the Pittsburgh Coal Seam). Air drill 12-1/4" hole. Run and cement 9-5/8" intermediate casing. Air drill 8-3/4" production hole to curve KOP (this section is typically directionally drilled with a slant/tangent profile for anti-collision and for lateral spacing). Displace hole with 12.0-12.8 ppg SOBM. Drill 8-1/2" curve from KOP to landing point. Continue drilling 8-1/2" lateral to TD (geosteer this section to remain in Marcellus target window). Perform clean-up cycle to condition well. Run and cement 5-1/2" production casing. Suspend well and skid to next well or RDMO drilling rig.

20) Describe fracturing/stimulating methods in detail, including anticipated max pressure and max rate:

Test production casing and toe prep well. MIRU stimulation/hydraulic fracturing equipment. Fracture well by pumping required number of stages utilizing plug-and-perf method. Max anticipated treating pressure is ~11,000 psi and max anticipated treating pump rate is ~100 bpm. Number of stages and stage spacing to be finalized after drilling. After last stimulation stage, drill out frac plugs and clean-out well to PBTD. Flow back and clean-up well. Tie well into production. Run tubing when required.

21) Total Area to be disturbed, including roads, stockpile area, pits, etc., (acres): 13.03 acres

22) Area to be disturbed for well pad only, less access road (acres): 13.03 acres

23) Describe centralizer placement for each casing string:

Fresh water string: centralize shoe joint and every other joint to surface - utilize bow spring centralizers. Intermediate string: centralize shoe joint and every 3rd joint to surface - utilize rigid/bow spring centralizers. Production string: centralize every joint from shoe to TOC - utilize single piece/rigid bow centralizers. Actual centralizer placement may be changed based on hole conditions.

24) Describe all cement additives associated with each cement type:

Fresh water/coal string: Class A cement with 1%-3% CaCl<sub>2</sub> and 1/4 pps cello-flake/LCM. Intermediate string: Class A cement with 0%-2% CaCl<sub>2</sub> and 1/4 pps cello-flake/LCM. Production string: Class A or H cement or Class H:Poz blend with dry blend and/or liquid additives including retarder, suspension agent, gas block, defoamer, fluid loss control, extender, dispersant, anti-settling agent. Actual cement blends may vary slightly depending upon cementing service company utilized.

25) Proposed borehole conditioning procedures:

Air sections are typically vertical holes - will ensure the hole is clean at section TD prior to TOOH to run casing (may require mist and/or soap to clean the hole). For the production hole - once at TD, circulate at max flowrate with max rotation until the shakers clean-up (typically requires multiple bottoms-up). For the production casing - once on bottom with casing, circulate a minimum of one hole volume prior to pumping cement.

\*Note: Attach additional sheets as needed.

*Strader Gower*  
9/17/2025

10/24/2025



RECEIVED  
Office of Oil and Gas

OCT 02 2025

WV Department of  
Environmental Protection



**DRILLING WELL PLAN**  
**MAJ-8J-HSM (Marcellus HZ)**  
**Marcellus Shale Horizontal**  
**Marshall County, WV**

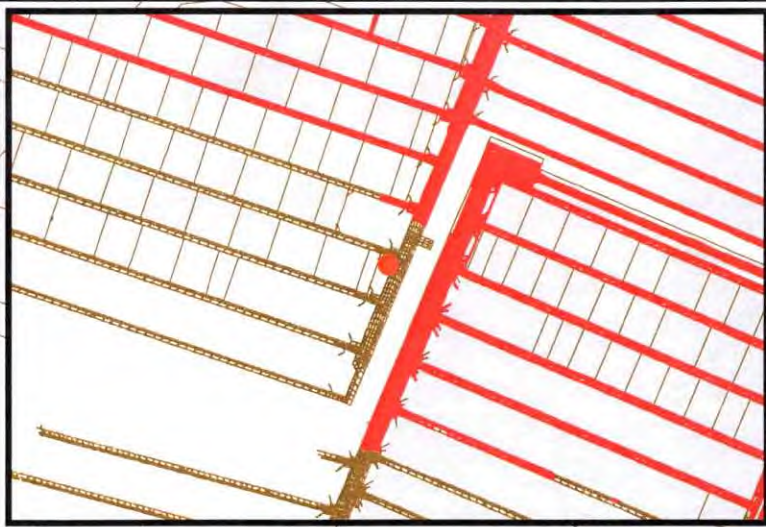
				MAJ-8J-HSM SHL			N 521679.37, E 1698786.9 (NAD27)			
Ground Elevation	1190.5' GL Elevation			MAJ-8J-HSM LP			N 519594.84, E 1695619.7 (NAD27)			
Azimuth	143.24°			MAJ-8J-HSM BHL			N 510225.43, E 1702617.56 (NAD27)			
WELLBORE DIAGRAM	HOLE	CASING	GEOLOGY	Tops (RKB)		MUD	CEMENT	CENTRALIZERS	CONDITIONING	COMMENTS
				MD	MD					
	24"	20" L/S	Soil and Rock			AIR	To Surface	N/A	N/A	Stabilize surface fill/soil
			Conductor	69	69					
	17-1/2"	13-3/8" 54.5# J-55 BTC	DFGW		344	AIR / FW Mist	15.8 ppg Class A + 1% to 3% CaCl2 + 1/4 pps Flake 20% OH Excess Yield = 1.19 TOC @ surface	Centralize every 3rd joint from shoe to surface  Bow spring centralizers	Ensure the hole is clean at section TD	Set through fresh water zones Set through coal zones Cemented to surface  13-3/8" shoe NOT to be set deeper than ground level
			Waynesburg Coal		450					
			Pittsburgh Coal (Solid)		733					
			FW/Coal Casing	1,142	1,142					
	12-1/4"	9-5/8" 36.0# J-55 LTC	Upper Kittanning Coal		1,339	AIR / Soap	15.8 ppg Class A + 0% to 2% CaCl2 + 1/4 pps Flake 20% OH Excess Yield = 1.19 TOC @ surface	Centralize every 3rd joint from shoe to surface  Bow spring centralizers	Soap the hole as needed and ensure the hole is clean at section TD	Set through potential salt water zones Cemented to surface  Casing to be set ~200'-250' below the Big Injun base
			Lower Kittanning Coal		1,415					
			Clarion Coal		1,487					
			Big Lime		1,694					
			Big Injun Sand		1,762					
			Gantz		2,154					
			50 Foot		2,269					
			Intermediate Casing	2,273	2,273					
	8-3/4" Tangent  8-1/2" Curve & Lateral	5-1/2" 20.0# P-110 VAR				AIR	15.0 ppg Class A 50:50 Poz with additives (retarder, suspension agent, gas block, defoamer, fluid loss, extender, etc.)  10% OH Excess Yield = 1.07  TOC @ >= 200' above 9-5/8" shoe	Centralize every joint from shoe to KOP - TOC  Single-piece/rigid bow centralizers	Once at TD, circulate at max flowrate with max rotation until shakers clean-up (typically requires multiple bottoms-up)  Once on bottom with casing, circulate a minimum of one hole volume prior to pumping cement	Note: For all strings, actual centralizer placements may be changed due to hole conditions  Note: For all strings, actual cement blends may vary slightly depending upon service company utilized
			Gordon		2,633					
			Fifth		2,840					
			Bradford		4,459					
			Elks		4,767					
			Rhinestreet		5,835					
			Burkett		6,441					
			Tully		6,462					
			Hamilton		6,488					
			Marcellus		6,599					
Production Casing			20,217	6,624						

LP @ +/- 8521' MD  
6632' TVD

8-3/4" x 8-1/2" Hole - Cemented Long String  
5-1/2" 20.0# P-110 VAR

+/- 11696' Lateral

TD @ +/- 20217' MD  
6632' TVD



RECEIVED  
Office of Oil and Gas  
OCT 02 2025  
WV Department of  
Environmental Protection

219 ft

167 ft

MAJ8JHSM

Ohio County Mine

Legend

- Well Location
- Mine Workings

- Remaining Coal
- Mined Out



0 12.5 25 50 75 100 Feet 1 inch = 100 feet	
Date: 2/24/2025	Prepared By: GIS
Revisions:	Approved By:
This map is property of CNX Resources Corp. and contains information that is proprietary and confidential in nature and may not be copied or reproduced without prior written consent.	

CNX

10/24/2025  
MAJ8JHSM  
Mine Map





## MAJ8 Pad Frac - SOG Review

In accordance with WVDEP 35CSR8 Section 5.11, all known shallow oil and gas (SOG) wells have been identified within a 500' radius of the MAJ8 pad that lies in Marshall County, West Virginia. All known wells within the Area of Review (AOR) have been reviewed and are provided in a list below (Figure 1) that includes API, Well Name, Current Operator (from Enverus), Well Type, Completion Formation, Current Status, Total Depth, State, County, Latitude, and Longitude, if available.

The Marcellus Shale of the Webster District of Marshall County area is found at an approximate True Vertical Depth (TVD) of 6800'. In this area, there are nine horizontal wells that produced from formations within the Zone of Influence (within 1500' vertically from the Marcellus Shale). Based on our experience with frac communication and shallow wells, barring any cement issues that would allow annular migration, no geologic conditions appear to exist that are suspect for frac communication. Based on a review of 3D seismic and favorable offset geosteering results, CNX Geology feels it highly unlikely for communication to occur with any wells producing in the area above the MAJ8 Pad.

The current hypothesis for SOG Communication is that Marcellus frac fluids and pressure intersect and migrate upwards through adjacent faulting that acts as a conduit for upward migration and intersection with high permeability reservoirs. The Big Injun is the primary reservoir in the MAJ8 area and is very shallow. Geomechanical / stress data was collected from a nearby pad, (Figure 3), which is the type log for the area. Frac modeling (Figure 4) of the Marcellus in the area does not show significant upward frac growth.

CNX plans to monitor all CNX-owned Marcellus wells that lie within 500' of the MAJ8 laterals and utilize the Production Control Room (PCR) to set up alarms via CygNet for any abrupt casing pressure or water rate changes. Those variances are outlined below. If the CNX PCR receives an alarm, the process is to notify the production foreman and production engineer responsible for the pad so that they can analyze if a frac hit is imminent, or if the alarm is of little to no concern. Should a communication event occur that triggers WVDEP notification requirements, CNX will follow §35-8-9 (9.3.c).

- 20% positive or negative rate of change for hourly water log period
- 10% positive or negative rate of change for casing pressure over a period of 30 minutes

Well Name/API	Formation	Operator	Orientation	Within Zone of Influence	TVD Depth (ft)
RHL37D (37-059-28156)	Marcellus Shale	CNX	Horizontal	Yes	6943



# MAJ8 Pad Risk Assessment Review

Wednesday, September 24, 2025

Eight (8) 3<sup>rd</sup> Party laterals lie within 500' of the MAJ8 laterals that penetrate the Zone of Influence (1500' above or below the target Marcellus.

Well Name/API	Formation	Operator	Orientation	Within Zone of Influence	TVD Depth (ft)
Neehouse 1 (47-051-01224)	Marcellus	EQT	Horizontal	Yes	6789
WEB4MHS (47-051-01550)	Marcellus	WINCORAM	Horizontal	Yes	6705
Craig Strobe MSH 3H (47-051-01743)	Marcellus	EXPAND ENERGY	Horizontal	Yes	6611
Michael Dunn MSH 210H (47-051-01600)	Marcellus	EXPAND ENERGY	Horizontal	Yes	6851
Michael Dunn MSH 6H (47-051-01582)	Marcellus	EXPAND ENERGY	Horizontal	Yes	6875
Doman 2H (47-051-01519)	Marcellus	EQT	Horizontal	Yes	6978
Michael Dunn MSH 8H (47-051-01563)	Marcellus	EXPAND ENERGY	Horizontal	Yes	6877
Michael Dunn MSH 10H (47-051-01581)	Marcellus	EXPAND ENERGY	Horizontal	Yes	6875

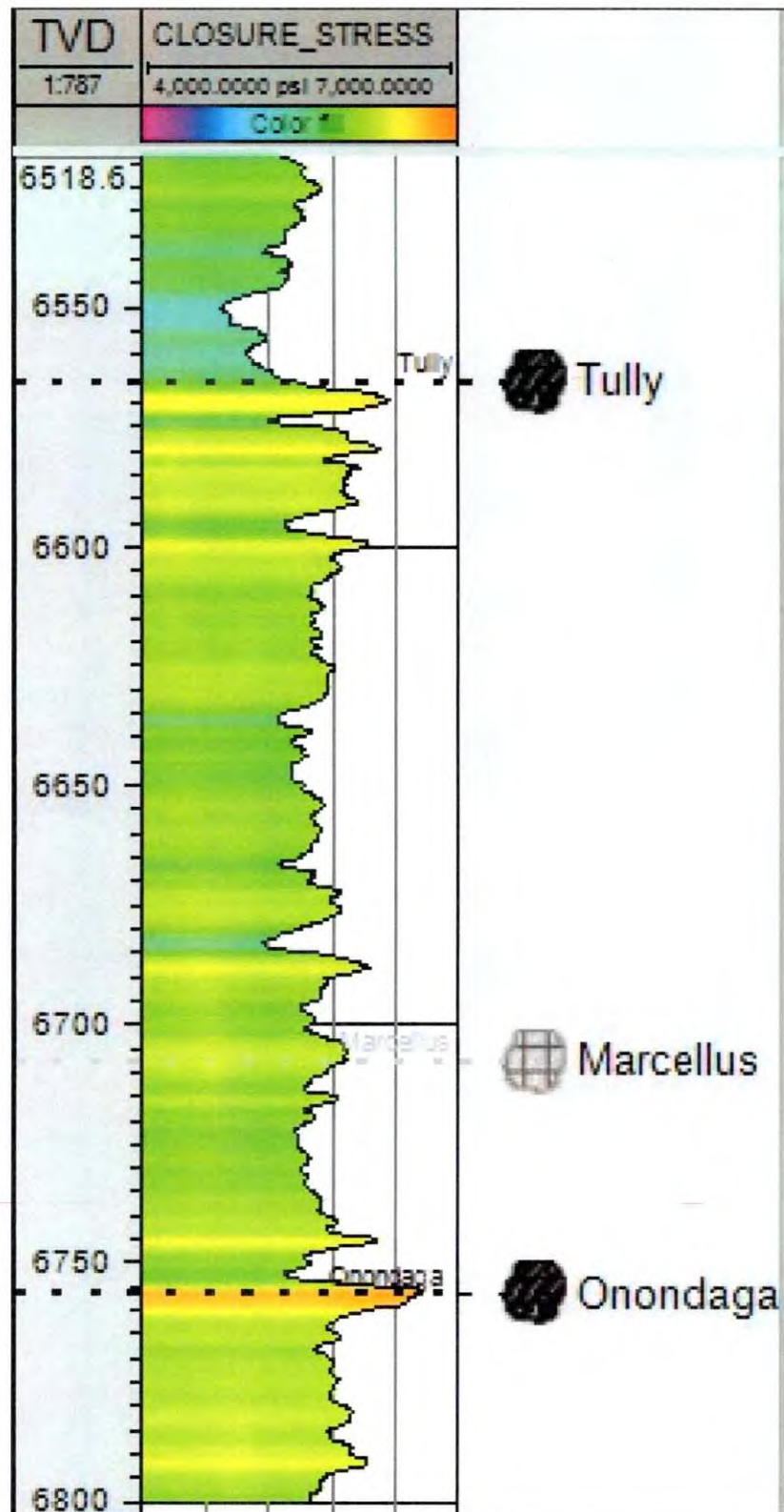
**Figure 1.** Fourteen (14) oil and gas wells lie within a 500' buffer around the MAJ8 pad. Eight (8) of them are Plugged and Abandoned, Two (2) are Inactive, Four (4) are producing. Several are Marcellus penetrations.

API Number	Well Name	Operator	Well Type	Formation	Status	State	County	Latitude	Longitude	TVD Feet
4705100336	BLAKE, JUANITA 5266	CONSOL PENNSYLVANIA COAL COMPANY LLC	STORAGE	BIG INJUN (PRICESEQ)	P & A	WV	MARSHALL	39.919368	-80.556533	1958
4705100336	BLAKE, JUANITA 5266	CONSOL PENNSYLVANIA COAL COMPANY LLC	STORAGE	BIG INJUN (PRICESEQ)	P & A	WV	MARSHALL	39.919368	-80.556533	1958
4705100684	DUNN, RAYMOND L 1	WHITMAN OIL & GAS CORP	GAS	RHNESTREET SH	P & A	WV	MARSHALL	39.896999	-80.558418	5418
4705101164	NEEHOUSE, LEO MC111	CONSOLIDATION COAL COMPANY	CBM	PITTSBURGH COAL	P & A	WV	MARSHALL	39.922495	-80.581271	1140
4705101165	NEEHOUSE, LEO MC111A	CONSOLIDATION COAL COMPANY	CBM	PITTSBURGH COAL	P & A	WV	MARSHALL	39.922495	-80.581271	1140
4705101165	NEEHOUSE, LEO MC111A	CONSOLIDATION COAL COMPANY	CBM	PENNSYLVANIAN SYSTEM	P & A	WV	MARSHALL	39.921512	-80.58254	825
4705101165	NEEHOUSE, LEO MC111A	CONSOLIDATION COAL COMPANY	CBM	PENNSYLVANIAN SYSTEM	P & A	WV	MARSHALL	39.921512	-80.58254	825
4705101224	NEEHOUSE 1	EQT	OIL & GAS	MARCELLUS SHALE	INACTIVE PRODUCER	WV	MARSHALL	39.919055	-80.573556	6789
4705101563	MICHAEL DUNN MSH 8H	EXPAND ENERGY	GAS	MARCELLUS SHALE	PRODUCING	WV	MARSHALL	39.897108	-80.554056	6877
4705101581	MICHAEL DUNN MSH 10H	EXPAND ENERGY	GAS	MARCELLUS SHALE	PRODUCING	WV	MARSHALL	39.897185	-80.554032	6875
4705101582	MICHAEL DUNN MSH 6H	EXPAND ENERGY	GAS	MARCELLUS SHALE	PRODUCING	WV	MARSHALL	39.897144	-80.554045	6875
4705101600	MICHAEL DUNN MSH 210H	EXPAND ENERGY	GAS	MARCELLUS SHALE	PRODUCING	WV	MARSHALL	39.897225	-80.554019	6851
4705170056	1	SOUTH PENN OIL (S. PENN NAT GAS)	DRY HOLE	BIG INJUN (UNDIFF)	INACTIVE COMPLETED	WV	MARSHALL	39.930134	-80.559167	2651



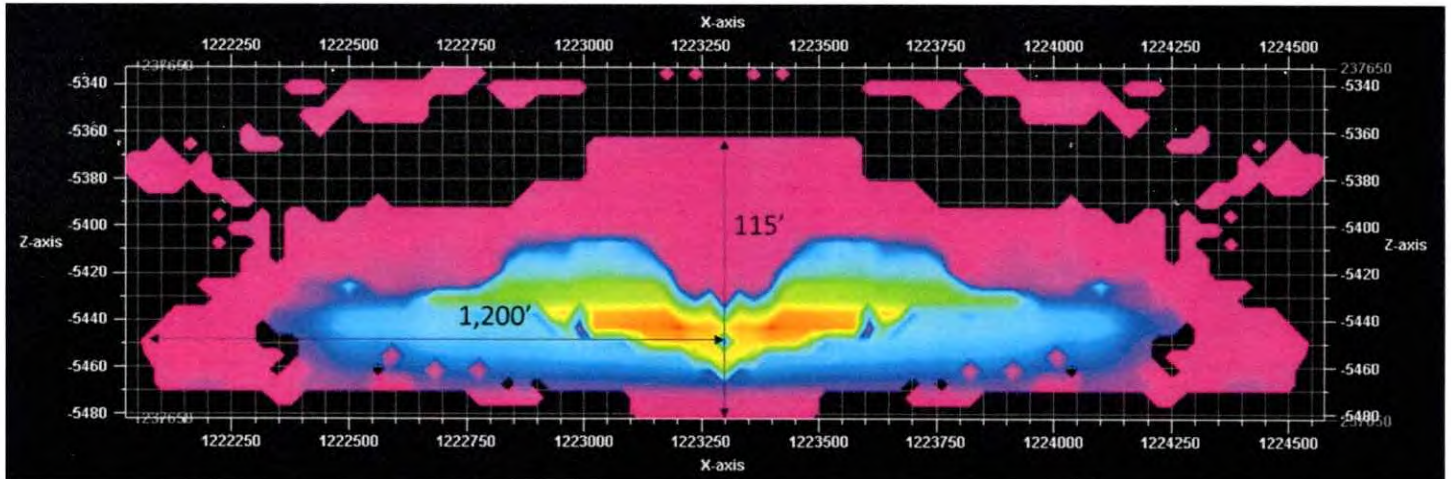


**Figure 3.** Stratigraphic intervals of high stress should serve as adequate confining layers, or frac barriers, for a Marcellus frac, as seen below in the Stress Profile log below.





**Figure 4.** Stratigraphic intervals of high stress should serve as adequate frac barriers for a Marcellus frac. The frac modeling example below is for this area, which yields a frac height of approximately 115'.

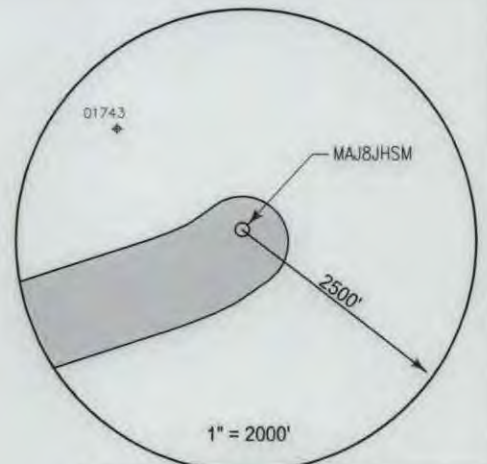








PAGE 2 OF 5



TRACT ID	SURFACE OWNER	LESSOR	PIN
1A	Russel W. Strobe, et al	Russell W. Strobe	15-6-19
		Craig D. Strobe	
		Donna J. Strobe	
		Great Lakes Energy Partners, L.L.C.	
		Range Resources -Appalachia, LLC	
		Chesapeake Appalachia, L.L.C.	
		Chesapeake Appalachia, L.L.C.	
		Statoli USA Onshore Properties Inc.	
		SWN Exchange Titleholder, LLC	
		Statoli USA Onshore Properties Inc.	
		SWN Production Company, LLC	
		Equinor USA Onshore Properties Inc.	
		Equinor USA Onshore Properties Inc.	
		SWN Production Company, LLC	
TRACT ID	SURFACE OWNER	LESSOR	PIN
1B	Craig D. Strobe, et al	Russell W. Strobe	15-9-15.2
		Craig D. Strobe	
		Donna J. Strobe	
		Great Lakes Energy Partners, L.L.C.	
		Range Resources -Appalachia, LLC	
		Chesapeake Appalachia, L.L.C.	
		Chesapeake Appalachia, L.L.C.	
		Statoli USA Onshore Properties Inc.	
		SWN Exchange Titleholder, LLC	
		Statoli USA Onshore Properties Inc.	
		SWN Production Company, LLC	
		Equinor USA Onshore Properties Inc.	
		Equinor USA Onshore Properties Inc.	
		SWN Production Company, LLC	
TRACT ID	SURFACE OWNER	LESSOR	PIN
1C	Russel W. Strobe, et al	Russell W. Strobe	15-9-15
		Craig D. Strobe	
		Donna J. Strobe	
		Great Lakes Energy Partners, L.L.C.	
		Range Resources -Appalachia, LLC	
		Chesapeake Appalachia, L.L.C.	
		Chesapeake Appalachia, L.L.C.	
		Statoli USA Onshore Properties Inc.	
		SWN Exchange Titleholder, LLC	
		Statoli USA Onshore Properties Inc.	
		SWN Production Company, LLC	
		Equinor USA Onshore Properties Inc.	
		Equinor USA Onshore Properties Inc.	
		SWN Production Company, LLC	

Diagram illustrating a traverse with two reference stakes and two interior angles:

- Top point: REFERENCE STAKE
- Second point: Interior angle  $N08^{\circ}31'59"E$ , distance  $379'$
- Third point: Interior angle  $S37^{\circ}23'24"W$ , distance  $411'$
- Bottom point: REFERENCE STAKE

 $1'' = 1500'$ 

UTM 17 NAD 83  
N: 4419789.12  
E: 536415.28

NAD 83, WV NORTH  
N: 521716.498  
E: 1667351.839

LAT/LON DATUM NAD 83

LAT: 39°55'38.732"  
LON: 80°34'25.831"

LANDING POINT

UTM 17 NAD 83  
N: 4419137.91  
E: 535460.96

NAD 83, WV NORTH

N: 519631.940  
E: 1664184.508

LAT/LON DATUM NAD 83

LAT: 39°55'17.755"  
LON: 80°35'06.162"

BOTTOM HOLE LOCATION (BHL)

UTM 17 NAD 83  
N: 4416319.19  
E: 537640.642

NAD 83, WV NORTH

N: 510262.729  
E: 1671182.387

LAT/LON DATUM NAD 83

LAT: 39°53'45.992"  
 LON: 80°33'34.928"

MAJ8 WELL PAD

MAJ8BHSM  
MAJ8CHSM  
MAJ8DHSM  
MAJ8EHSM  
MAJ8FHSM  
MAJ8GHSM  
MAJ8HHSM  
MAJ8JHSM  
MAJ8KHSM  
MAJ8LHSM  
MAJ8MHSM  
MAJ8NHSM



**KEYSTONE**  
CONSULTANTS, LLC

I, the undersigned, hereby certify that this plat is correct to the best of my knowledge and belief and shows all the information required by law and the regulations issued and prescribed by the Department of Environmental Protection.

L. L. S. 2394



SEAL

FILE NO: \_\_\_\_\_  
DRAWING NO: \_\_\_\_\_  
SCALE: 1" = 1000'  
MINIMUM DEGREE OF ACCURACY: 1:2500  
PROVEN SOURCE OF ELEVATION: NGS CORS Station

STATE OF WEST VIRGINIA  
DEPARTMENT OF ENVIRONMENTAL PROTECTION  
OIL AND GAS DIVISION

DATE: SEPTEMBER 25 2025

OPERATORS WELL NO: \_\_\_\_\_

API WELL NO

47 - 051 - 02550

STATE COUNTY PERMIT

WELL TYPE: ☐ OIL ☒ GAS ☐ LIQUID INJECTION ☐ WASTE DISPOSAL  
(IF GAS) PRODUCTION: ☐ STORAGE ☐ DEEP ☒ SHALLOW

LOCATION ELEVATION: 1190.7' WATERSHED: Upper Wheeling Creek QUADRANGLE: Majorsville

DISTRICT: Webster COUNTY: Marshall

SURFACE OWNER: John S. Kutis and Sylvia M. Kutis, Trustees of the John and Sylvia Kutis 20202 Irrevocable Trust dated March 12, 2020 ACREAGE: 53.20 ±

ROYALTY OWNER: John and Sylvia Kutis 2020 Irrevocable Trust, dated 03/12/2020 LEASE NO: 192678000 ACREAGE: 55.20 ±

PROPOSED WORK: ☒ DRILL ☐ CONVERT ☐ DRILL DEEPER ☒ FRACTURE OR STIMULATE ☐ PLUG OFF OLD FORMATION

☐ PERFORATE NEW FORMATION ☐ OTHER PHYSICAL CHANGE IN WELL (SPECIFY)

☐ PLUG AND ABANDON    ☐ CLEAN OUT AND REPLUG    TARGET FORMATION: Marcellus    ESTIMATED DEPTH: TVD: 6,632'

WELL OPERATOR: CNX Gas Company LLC

DESIGNATED AGENT: Anthony Kendziora

ADDRESS: 1000 Horizon Vue Drive

ADDRESS: 111 Avondale Road

Canonsburg, PA 15317

Fairmont, WV 26554



TRACT ID	SURFACE OWNER	LESSOR	PIN
3B	John S. & Sylvia M. Kutis Irrevocable Trust	John S. Kutis and Sylvia M. Kutis, a/k/a Sylvia M. Kutis, h/w	15-10-1
		Chevron U.S.A., Inc.	
		Chevron U.S.A., Inc.	
		Chesapeake Appalachia, L.L.C.	
		Statoil USA Onshore Properties Inc.	
		SWN Exchange Titleholder, LLC	
		Statoil USA Onshore Properties Inc.	
		SWN Production Company, LLC	
		Equinor USA Onshore Properties Inc.	
		Equinor USA Onshore Properties Inc.	
		SWN Production Company, LLC	
TRACT ID	SURFACE OWNER	LESSOR	PIN
51A	Deborah K. Perkins, et al	O. E. Burge and Sarah L. Burge, his wife	15-13-21
		The Manufacturers Light and Heat Company	
		Columbia Gas Transmission Corporation	
		Columbia Gas Transmission, LLC	
		NiSource Energy Ventures, LLC	
		NiSource Energy Ventures, LLC	
		Columbia Energy Ventures, LLC	
		CNX Gas Company, LLC	
		Noble Energy, Inc	
		HG Energy II Appalachia, LLC	
TRACT ID	SURFACE OWNER	LESSOR	PIN
51B	Deborah K. Perkins, et al	O. E. Burge and Sarah L. Burge, his wife	15-13-21
		The Manufacturers Light and Heat Company	
		Columbia Gas Transmission Corporation	
		Columbia Gas Transmission, LLC	
		NiSource Energy Ventures, LLC	
		NiSource Energy Ventures, LLC	
		Columbia Energy Ventures, LLC	
		CNX Gas Company, LLC	
		Noble Energy, Inc	
		HG Energy II Appalachia, LLC	
TRACT ID	SURFACE OWNER	LESSOR	PIN
65	Ronald Lee Yoho	Terry Schaub, a widow	p/o 15-9-13
		Chesapeake Appalachia, L.L.C.	
		Chesapeake Appalachia, L.L.C.	
		Statoil USA Onshore Properties Inc.	
		SWN Exchange Titleholder, LLC	
		Statoil USA Onshore Properties Inc.	
		SWN Production Company, LLC	
		Equinor USA Onshore Properties Inc.	
		Equinor USA Onshore Properties Inc.	
		SWN Production Company, LLC	
		Ronald Lee Yoho and Rebecca A. Yoho, husband and wife	
		TH Exploration, LLC	
		EQT TGH Exploration LLC	
		EQT TGH Exploration LLC	
TRACT ID	SURFACE OWNER	LESSOR	PIN
67A	Dennis E. Aston, et ux, et al	Harold E. Aston and Linda K. Aston, Acting as Trustees of the Aston Family Trust dated July 20, 2017	p/o 15-9-18 15-9-18.5 15-9-18.6
		TH Exploration, LLC	
		EQT TGH Exploration LLC	
		EQT TGH Exploration LLC	
TRACT ID	SURFACE OWNER	LESSOR	PIN
67B	Aston Family Trust	Harold E. Aston and Linda K. Aston, Acting as Trustees of the Aston Family Trust dated July 20, 2017	15-9-19
		TH Exploration, LLC	
		EQT TGH Exploration LLC	
		EQT TGH Exploration LLC	

10/24/2025



TRACT ID	SURFACE OWNER	LESSOR	PIN
68A	Barbara J. Neehouse	Barbara J. Neehouse a/k/a Barbara Jean Neehouse	15-9-15.1
TRACT ID	SURFACE OWNER	LESSOR	PIN
68C	Barbara J. Neehouse	Barbara J. Neehouse a/k/a Barbara Jean Neehouse	15-9-25
TRACT ID	SURFACE OWNER	LESSOR	PIN
71	Samuel G. Fankhouser, et ux	Samuel G. Fankhouser and Pamela S. Fankhouser, Trustees of the Samuel and Pamela Fankhouser 2018 Irrevocable Trust, dated February 2, 2018, a/k/a Samuel G. Fankhouser and Pamela S. Fankhouser, Trustees of the Samuel and Pamela Fankhouser Irrevocable Trust, dated February 2, 2018	15-9-18.1 p/o 15-9-20
TRACT ID	SURFACE OWNER	LESSOR	PIN
75A	Terry M. Gilligan, et al	Terry M. Gilligan and Patricia N. Gilligan f/k/a Patricia N Dofka, as joint tenants with right of survivorship	15-9-26
TRACT ID	SURFACE OWNER	LESSOR	PIN
75C	Terry M. Gilligan, et al	Terry M. Gilligan and Patricia N. Gilligan f/k/a Patricia N Dofka, as joint tenants with right of survivorship	15-10-7
TRACT ID	SURFACE OWNER	LESSOR	PIN
77	John R. Wise, et ux	John R. Wise and Cindy S. Ramirez-Wise	15-10-8.2
TRACT ID	SURFACE OWNER	LESSOR	PIN
78A	James R. Wise, et ux	Stone Hill Minerals Holdings, LLC EQT Production Company	15-10-8
TRACT ID	SURFACE OWNER	LESSOR	PIN
78B	Allen E. Hager, et ux	Stone Hill Minerals Holdings, LLC EQT Production Company	15-10-8.1
TRACT ID	SURFACE OWNER	LESSOR	PIN
79A	Kathleen E. Zien, et al	Ridgetop Ten LLC Divot Energy Consultants, LLC NMC Land Management, LLC John C. Henderson Ethan J. Henderson James F. Henderson, II Robert Bruce Knight, as Successor Trustee of The Knight Revocable Trust under Declaration of Trust Ownership dated February 27th, 2004, and unrecorded in Tulsa County, State of Oklahoma Rebecca Ann Murrah Lovelace and Robert Larry Lovelace William Wilson Leadbetter a/k/a William W. Leadbetter, by his Power-of-Attorney, Beth L. Gordon Rebecca Ann Murrah Lovelace a/k/a Rebecca A. Lovelace a/k/a Becky M. Lovelace a/k/a Becky Lovelace Chevron U.S.A. Inc. EQT Aurora LLC	15-13-14 15-13-14.1
TRACT ID	SURFACE OWNER	LESSOR	PIN
79B	Kathleen E. Zien, et al	Ridgetop Ten LLC Divot Energy Consultants, LLC NMC Land Management, LLC John C. Henderson Ethan J. Henderson James F. Henderson, II Robert Bruce Knight, as Successor Trustee of The Knight Revocable Trust under Declaration of Trust Ownership dated February 27th, 2004, and unrecorded in Tulsa County, State of Oklahoma Jan L. Yanni and Thomas D. Yanni, wife and husband Beth Leadbetter Gordon & Leonard B. Gordon, wife and husband Martha Ann Leadbetter Young Rebecca Ann Murrah Lovelace & Robert Larry Lovelace, wife and husband SWN Production Company, LLC Expand Appalachia LLC	p/o 15-13-19
TRACT ID	SURFACE OWNER	LESSOR	PIN
86B	Wolf Run Baptist Church	Resource Minerals Headwater I, LP SWN Production Company, LLC Expand Appalachia LLC	p/o 15-13-18
TRACT ID	SURFACE OWNER	LESSOR	PIN
87	Wolf Run Baptist Church	CNX Resource Holdings LLC	15-13-18.1

10/24/2025



TRACT ID	SURFACE OWNER	LESSOR	PIN
88A	Wolf Run Baptist Chruch, et al	Jeffrey Whipkey and Debra Whipkey, husband and wife	p/o 15-13-18 p/o 15-13-19
		NPAR, LLC	
		Chief Exploration & Development LLC	
		Radler 2000 Limited Partnership	
		NPAR, LLC	
		Chevron U.S.A Inc.	
		EQT Aurora LLC	
TRACT ID	SURFACE OWNER	LESSOR	PIN
89A	Martin Hewitt, et ux	Martin Hewitt and Terri Hewitt, husband and wife	15-13-12
		McMurray Land Management, LLC	
TRACT ID	SURFACE OWNER	LESSOR	PIN
89B	Martin Hewitt, et ux	Martin Hewitt and Terri Hewitt, husband and wife	15-13-20
		McMurray Land Management, LLC	
TRACT ID	SURFACE OWNER	LESSOR	PIN
90	Michael A. Dunn, et ux	Michael A. Dunn and Kandy R. Dunn, husband and wife	15-13-23.1
		SWN Production Company, LLC	
		Expand Appalachia LLC	
TRACT ID	SURFACE OWNER	LESSOR	PIN
91	Michael A. Dunn, et ux	Michael A. Dunn and Kandy R. Dunn, husband and wife	15-10-10
		SWN Production Company, LLC	
		Expand Appalachia LLC	
TRACT ID	SURFACE OWNER	LESSOR	PIN
93	Marsha Ann Foster	Golden Eagle Resources II, LLC	15-13-23.2
		Marsha Ann Foster	
TRACT ID	SURFACE OWNER	LESSOR	PIN
94	Marsha Ann Foster, et vir	Marsha Ann Foster and Aaron Matthew Foster, her husband	15-13-23
		American Petroleum Partners Operating, LLC	
		High Road Operating LLC	
		TH Exploration, LLC	
		EQT TGH Exploration LLC	
		Golden Eagle Resources II, LLC	
TRACT ID	SURFACE OWNER	LESSOR	PIN
110	West Virginia Dept. of Transportation	The West Virginia Department of Transportation, Division of Highways	p/o 15-13-18 p/o 15-13-18.1 p/o 15-13-18.2
TRACT ID	SURFACE OWNER	LESSOR	PIN
111	West Virginia Dept. of Transportation	The West Virginia Department of Transportation, Division of Highways	p/o 15-13-21
TRACT ID	SURFACE OWNER	LESSOR	PIN
112	West Virginia Dept. of Transportation	The West Virginia Department of Transportation, Division of Highways	p/o 15-13-20

10/24/2025



**INFORMATION SUPPLIED UNDER WEST VIRGINIA CODE  
Chapter 22, Article 6A, Section 5(a)(5)  
IN LIEU OF FILING LEASE(S) AND OTHER CONTINUING CONTRACT(S)**

Under the oath required to make the verification on page 1 of this Notice and Application, I depose and say that I am the person who signed the Notice and Application for the Applicant, and that –

- (1) the tract of land is the same tract described in this Application, partly or wholly depicted in the accompanying plat, and described in the Construction and Reclamation Plan;
- (2) the parties and recordation data (if recorded) for lease(s) or other continuing contract(s) by which the Applicant claims the right to extract, produce or market the oil or gas are as follows:

Lease Name or Number	Grantor, Lessor, etc.	Grantee, Lessee, etc.	Royalty	Book/Page
SEE ATTACHED				

RECEIVED  
Office of Oil and Gas

OCT 02 2025

WV Department of  
Environmental Protection

**Acknowledgement of Possible Permitting/Approval  
In Addition to the Office of Oil and Gas**

The permit applicant for the proposed well work addressed in this application hereby acknowledges the possibility of the need for permits and/or approvals from local, state, or federal entities in addition to the DEP, Office of Oil and Gas, including but not limited to the following:

- WV Division of Water and Waste Management
- WV Division of Natural Resources WV Division of Highways
- U.S. Army Corps of Engineers
- U.S. Fish and Wildlife Service
- County Floodplain Coordinator

The applicant further acknowledges that any Office of Oil and Gas permit in no way overrides, replaces, or nullifies the need for other permits/approvals that may be necessary and further affirms that all needed permits/approvals should be acquired from the appropriate authority before the affected activity is initiated.

Well Operator: CNX GAS COMPANY LLC

By: ERIKA WHETSTONE 

Its: MANAGER PERMITTING



Tract ID	Tax Map & Parcel	Title Opinion QLS #	Surface Owner	Grantor, Lessor, etc	Grantee, Lessee, etc	Royalty	Book/Page
1A	15-6-19	192689000	Russel W. Strobe, et al	Russell W. Strobe Craig D. Strobe Donna J. Strobe Great Lakes Energy Partners, L.L.C. Range Resources –Appalachia, LLC	Great Lakes Energy Partners, L.L.C. Great Lakes Energy Partners, L.L.C. Great Lakes Energy Partners, L.L.C. Range Resources –Appalachia, LLC Chesapeake Appalachia, L.L.C. and Statoil USA Onshore Properties Inc.	Not Less than 1/8 Not Less than 1/8 Not Less than 1/8 Name Change Assignment	657/52 657/54 657/86 19/443 23/368
				Chesapeake Appalachia, L.L.C. Chesapeake Appalachia, L.L.C. Statoil USA Onshore Properties Inc. SWN Exchange Titleholder, LLC Statoil USA Onshore Properties Inc. SWN Production Company, LLC Equinor USA Onshore Properties Inc. Equinor USA Onshore Properties Inc. SWN Production Company, LLC	Statoil USA Onshore Properties Inc. SWN Production Company, LLC SWN Exchange Titleholder, LLC SWN Production Company, LLC Equinor USA Onshore Properties Inc. CNX Gas Company LLC	Partial Assignment Assignment Partial Assignment Merger Name Change Agreement	24/363 33/110 33/424 19/624 2/427 1142/499
1B	15-9-15.2	192689000	Craig D. Strobe, et al	Russell W. Strobe Craig D. Strobe Donna J. Strobe Great Lakes Energy Partners, L.L.C. Range Resources –Appalachia, LLC	Great Lakes Energy Partners, L.L.C. Great Lakes Energy Partners, L.L.C. Great Lakes Energy Partners, L.L.C. Range Resources –Appalachia, LLC Chesapeake Appalachia, L.L.C. and Statoil USA Onshore Properties Inc.	Not Less than 1/8 Not Less than 1/8 Not Less than 1/8 Name Change Assignment	657/52 657/54 657/86 19/443 23/368
				Chesapeake Appalachia, L.L.C. Chesapeake Appalachia, L.L.C. Statoil USA Onshore Properties Inc. SWN Exchange Titleholder, LLC Statoil USA Onshore Properties Inc. SWN Production Company, LLC Equinor USA Onshore Properties Inc. Equinor USA Onshore Properties Inc. SWN Production Company, LLC	Statoil USA Onshore Properties Inc. SWN Production Company, LLC SWN Exchange Titleholder, LLC SWN Production Company, LLC Equinor USA Onshore Properties Inc. CNX Gas Company LLC	Partial Assignment Assignment Partial Assignment Merger Name Change Agreement	24/363 33/110 33/424 19/624 2/427 1142/499
1C	15-9-15	192689000	Russel W. Strobe, et al	Russell W. Strobe Craig D. Strobe Donna J. Strobe Great Lakes Energy Partners, L.L.C. Range Resources –Appalachia, LLC	Great Lakes Energy Partners, L.L.C. Great Lakes Energy Partners, L.L.C. Great Lakes Energy Partners, L.L.C. Range Resources –Appalachia, LLC Chesapeake Appalachia, L.L.C. and Statoil USA Onshore Properties Inc.	Not Less than 1/8 Not Less than 1/8 Not Less than 1/8 Name Change Assignment	657/52 657/54 657/86 19/443 23/368
				Chesapeake Appalachia, L.L.C. Chesapeake Appalachia, L.L.C. Statoil USA Onshore Properties Inc. SWN Exchange Titleholder, LLC Statoil USA Onshore Properties Inc. SWN Production Company, LLC Equinor USA Onshore Properties Inc. Equinor USA Onshore Properties Inc. SWN Production Company, LLC	Statoil USA Onshore Properties Inc. SWN Production Company, LLC SWN Exchange Titleholder, LLC SWN Production Company, LLC Equinor USA Onshore Properties Inc. CNX Gas Company LLC	Partial Assignment Assignment Partial Assignment Merger Name Change Agreement	24/363 33/110 33/424 19/624 2/427 1142/499
3B	15-10-1	192678000	John S. & Sylvia M. Kutis Irrevocable Trust	John S. Kutis and Sylvia M. Kutis, a/k/a Sylvia M. Kutis, h/w	Chevron U.S.A., Inc. Chevron U.S.A., Inc.	Not Less than 1/8 Assignment Assignment	772/457 31/18 32/235
				Chesapeake Appalachia, L.L.C.	Chesapeake Appalachia, L.L.C. Chesapeake Appalachia, L.L.C. and Statoil USA Onshore Properties Inc.	Assignment Assignment	33/110 34/582 35/32
				Statoil USA Onshore Properties Inc. SWN Exchange Titleholder, LLC Statoil USA Onshore Properties Inc. SWN Production Company, LLC Equinor USA Onshore Properties Inc. Equinor USA Onshore Properties Inc. SWN Production Company, LLC	SWN Exchange Titleholder, LLC SWN Production Company, LLC Equinor USA Onshore Properties Inc. CNX Gas Company LLC	Partial Assignment Merger Name Change Agreement	33/424 19/624 2/427 1142/499
51A	15-13-21	191804000	Deborah K. Perkins, et al	O. E. Burge and Sarah L. Burge, his wife	The Manufacturers Light and Heat Company Columbia Gas Transmission Corporation Columbia Gas Transmission, LLC NiSource Energy Ventures, LLC	Not Less than 1/8	381/259
				The Manufacturers Light and Heat Company Columbia Gas Transmission Corporation Columbia Gas Transmission, LLC NiSource Energy Ventures, LLC	Columbia Gas Transmission Corporation Columbia Gas Transmission, LLC NiSource Energy Ventures, LLC CNX Gas Company, LLC	Merger Confirmatory Deed Assignment Sublease	422/204 683/459 21/428 685/136 693/414 697/295 782/1
				NiSource Energy Ventures, LLC	Columbia Energy Ventures, LLC	Name Change	WVSOS

Columbia Energy Ventures, LLC	CNX Gas Company, LLC	Assignment	37/129
CNX Gas Company, LLC	Noble Energy, Inc Noble Energy, Inc	Assignment	37/169 40/588 41/1 41/45 41/77
Noble Energy, Inc	HG Energy II Appalachia, LLC	Assignment	39/1 34/392
HG Energy II Appalachia, LLC	CNX Gas Company, LLC	Assignment	48/374

<u>Tract ID</u>	<u>Tax Map &amp; Parcel</u>	<u>Title Opinion QLS #</u>	<u>Surface Owner</u>	<u>Grantor, Lessor, etc</u>	<u>Grantee, Lessee, etc</u>	<u>Royalty</u>	<u>Book/Page</u>
-----------------	-----------------------------	----------------------------	----------------------	-----------------------------	-----------------------------	----------------	------------------

51B	15-13-21	191804000	Deborah K. Perkins, et al	O. E. Burge and Sarah L. Burge, his wife  The Manufacturers Light and Heat Company Columbia Gas Transmission Corporation Columbia Gas Transmission, LLC NiSource Energy Ventures, LLC  NiSource Energy Ventures, LLC Columbia Energy Ventures, LLC  CNX Gas Company, LLC    Noble Energy, Inc HG Energy II Appalachia, LLC	The Manufacturers Light and Heat Company  Columbia Gas Transmission Corporation Columbia Gas Transmission, LLC NiSource Energy Ventures, LLC CNX Gas Company, LLC    Columbia Energy Ventures, LLC CNX Gas Company, LLC Noble Energy, Inc Noble Energy, Inc  HG Energy II Appalachia, LLC CNX Gas Company, LLC	Not Less than 1/8  Merger Confirmatory Deed Assignment Sublease  Name Change Assignment  Assignment  Assignment	381/259  422/204 683/459 21/428 685/136 693/414 697/295 782/1 WVS05 37/129  37/169 40/588 41/1 41/45 41/77 39/1 34/392 48/374
-----	----------	-----------	---------------------------	---	---	---	--

<u>Tract ID</u>	<u>Tax Map &amp; Parcel</u>	<u>Title Opinion QLS #</u>	<u>Surface Owner</u>	<u>Grantor, Lessor, etc</u>	<u>Grantee, Lessee, etc</u>	<u>Royalty</u>	<u>Book/Page</u>
-----------------	-----------------------------	----------------------------	----------------------	-----------------------------	-----------------------------	----------------	------------------

65	p/o 15-9-13	192683000	Ronald Lee Yoho	Terry Schaub, a widow Chesapeake Appalachia, L.L.C. Chesapeake Appalachia, L.L.C. Statoil USA Onshore Properties Inc. SWN Exchange Titleholder, LLC Statoil USA Onshore Properties Inc. SWN Production Company, LLC Equinor USA Onshore Properties Inc. Equinor USA Onshore Properties Inc. SWN Production Company, LLC  Ronald Lee Yoho and Rebecca A. Yoho, husband and wife TH Exploration, LLC EQT TGH Exploration LLC EQT TGH Exploration LLC	Chesapeake Appalachia, LLC Statoil USA Onshore Properties Inc. SWN Production Company, LLC SWN Exchange Titleholder, LLC SWN Production Company, LLC Equinor USA Onshore Properties Inc. CNX Gas Company LLC CNX Gas Company LLC  TH Exploration, LLC EQT TGH Exploration LLC CNX Gas Company LLC CNX Gas Company LLC	Not Less than 1/8 Partial Assignment Assignment Partial Assignment Merger Name Change Agreement  Assignment Assignment  Not Less than 1/8 Name Change Memorandum of Agreement Assignment	745/629 27/50 33/110 33/424 19/624 2/427 1142/499  51/190 51/198  1130/357 2/463 1210/566 53/571
----	-------------	-----------	-----------------	--	---	--	--

<u>Tract ID</u>	<u>Tax Map &amp; Parcel</u>	<u>Title Opinion QLS #</u>	<u>Surface Owner</u>	<u>Grantor, Lessor, etc</u>	<u>Grantee, Lessee, etc</u>	<u>Royalty</u>	<u>Book/Page</u>
-----------------	-----------------------------	----------------------------	----------------------	-----------------------------	-----------------------------	----------------	------------------

67A	p/o 15-9-18 15-9-18.5 15-9-18.6	192615000	Dennis E. Aston, et ux, et al	Harold E. Aston and Linda K. Aston, Acting as Trustees of the Aston Family Trust dated July 20, 2017  TH Exploration, LLC  EQT TGH Exploration LLC EQT TGH Exploration LLC	TH Exploration, LLC  EQT TGH Exploration LLC CNX Gas Company LLC CNX Gas Company LLC	Not Less than 1/8  Name Change  Memorandum of Agreement Assignment	1130/371  2/463 2/472 1210/566 53/571
-----	---------------------------------------	-----------	-------------------------------	---	--	---	--

<u>Tract ID</u>	<u>Tax Map &amp; Parcel</u>	<u>Title Opinion QLS #</u>	<u>Surface Owner</u>	<u>Grantor, Lessor, etc</u>	<u>Grantee, Lessee, etc</u>	<u>Royalty</u>	<u>Book/Page</u>
-----------------	-----------------------------	----------------------------	----------------------	-----------------------------	-----------------------------	----------------	------------------

67B	15-9-19	192615000	Aston Family Trust	Harold E. Aston and Linda K. Aston, Acting as Trustees of the Aston Family Trust dated July 20, 2017  TH Exploration, LLC  EQT TGH Exploration LLC EQT TGH Exploration LLC	TH Exploration, LLC  EQT TGH Exploration LLC CNX Gas Company LLC CNX Gas Company LLC	Not Less than 1/8  Name Change  Memorandum of Agreement Assignment	1130/371  2/463 2/472 1210/566 53/571
-----	---------	-----------	--------------------	---	--	---	--

<u>Tract ID</u>	<u>Tax Map &amp; Parcel</u>	<u>Title Opinion QLS #</u>	<u>Surface Owner</u>	<u>Grantor, Lessor, etc</u>	<u>Grantee, Lessee, etc</u>	<u>Royalty</u>	<u>Book/Page</u>
-----------------	-----------------------------	----------------------------	----------------------	-----------------------------	-----------------------------	----------------	------------------

68A	15-9-15.1	192601000	Barbara J. Neehouse	Barbara J. Neehouse a/k/a Barbara Jean Neehouse	CNX Gas Company LLC	Not Less than 1/8	1202/584
-----	-----------	-----------	---------------------	---	---------------------	-------------------	----------

<u>Tract ID</u>	<u>Tax Map &amp; Parcel</u>	<u>Title Opinion QLS #</u>	<u>Surface Owner</u>	<u>Grantor, Lessor, etc</u>	<u>Grantee, Lessee, etc</u>	<u>Royalty</u>	<u>Book/Page</u>
-----------------	-----------------------------	----------------------------	----------------------	-----------------------------	-----------------------------	----------------	------------------

68C	15-9-25	192601000	Barbara J. Neehouse	Barbara J. Neehouse a/k/a Barbara Jean Neehouse	CNX Gas Company LLC	Not Less than 1/8	1202/584
-----	---------	-----------	---------------------	---	---------------------	-------------------	----------

<u>Tract ID</u>	<u>Tax Map &amp; Parcel</u>	<u>Title Opinion QLS #</u>	<u>Surface Owner</u>	<u>Grantor, Lessor, etc</u>	<u>Grantee, Lessee, etc</u>	<u>Royalty</u>	<u>Book/Page</u>
-----------------	-----------------------------	----------------------------	----------------------	-----------------------------	-----------------------------	----------------	------------------

71	15-9-18.1 p/o 15-9-20	191960000	Samuel G. Fankhouser, et ux	Samuel G. Fankhouser and Pamela S. Fankhouser, Trustees of the Samuel and Pamela Fankhouser 2018 Irrevocable Trust, dated February 2, 2018, a/k/a Samuel G. Fankhouser and Pamela S. Fankhouser, Trustees of the Samuel and Pamela Fankhouser Irrevocable Trust, dated February 2, 2018	CNX Gas Company LLC	Not Less than 1/8	1204/38
----	--------------------------	-----------	-----------------------------	---	---------------------	-------------------	---------

Tract ID	Tax Map & Parcel	Title Opinion QLS #	Surface Owner	Grantor, Lessor, etc	Grantee, Lessee, etc	Royalty	Book/Page
75A	15-9-26	192642000	Terry M. Gilligan, et al	Terry M. Gilligan and Patricia N. Gilligan f/k/a Patricia N Dofka, as joint tenants with right of survivorship	CNX Gas Company LLC	Not Less than 1/8	1202/598
Tract ID	Tax Map & Parcel	Title Opinion QLS #	Surface Owner	Grantor, Lessor, etc	Grantee, Lessee, etc	Royalty	Book/Page
75C	15-10-7	192642000	Terry M. Gilligan, et al	Terry M. Gilligan and Patricia N. Gilligan f/k/a Patricia N Dofka, as joint tenants with right of survivorship	CNX Gas Company LLC	Not Less than 1/8	1202/598
Tract ID	Tax Map & Parcel	Title Opinion QLS #	Surface Owner	Grantor, Lessor, etc	Grantee, Lessee, etc	Royalty	Book/Page
77	15-10-8.2	203102000	John R. Wise, et ux	John R. Wise and Cindy S. Ramirez-Wise	CNX Gas Company LLC	Not Less than 1/8	1203/429
Tract ID	Tax Map & Parcel	Title Opinion QLS #	Surface Owner	Grantor, Lessor, etc	Grantee, Lessee, etc	Royalty	Book/Page
78A	15-10-8	203103000	James R. Wise, et ux	Stone Hill Minerals Holdings, LLC EQT Production Company	EQT Production Company CNX Gas Company LLC	Not Less than 1/8 Assignment	1192/426 53/571
Tract ID	Tax Map & Parcel	Title Opinion QLS #	Surface Owner	Grantor, Lessor, etc	Grantee, Lessee, etc	Royalty	Book/Page
78B	15-10-8.1	203103000	Allen E. Hager, et ux	Stone Hill Minerals Holdings, LLC EQT Production Company	EQT Production Company CNX Gas Company LLC	Not Less than 1/8 Assignment	1192/426 53/571
Tract ID	Tax Map & Parcel	Title Opinion QLS #	Surface Owner	Grantor, Lessor, etc	Grantee, Lessee, etc	Royalty	Book/Page
79A	15-13-14 15-13-14.1	191813000	Kathleen E. Zien, et al	Ridgetop Ten LLC  Divot Energy Consultants, LLC NMC Land Management, LLC John C. Henderson Ethan J. Henderson James F. Henderson, II Robert Bruce Knight, as Successor Trustee of The Knight Revocable Trust under Declaration of Trust Ownership dated February 27th, 2004, and unrecorded in Tulsa County, State of Oklahoma	CNX Gas Company LLC  CNX Gas Company LLC CNX Gas Company LLC CNX Gas Company LLC CNX Gas Company LLC CNX Gas Company LLC	Not Less than 1/8  Not Less than 1/8 Not Less than 1/8 Not Less than 1/8 Not Less than 1/8 Not Less than 1/8	1238/354  1241/681 1242/7 1210/95 1210/89 1211/23 1210/652
				Rebecca Ann Murrah Lovelace and Robert Larry Lovelace	CNX Gas Company LLC	Not Less than 1/8	1227/122
				William Wilson Leadbetter a/k/a William W. Leadbetter, by his Power-of-Attorney, Beth L. Gordon	Chevron U.S.A. Inc.	Not Less than 1/8	1052/149
				Rebecca Ann Murrah Lovelace a/k/a Rebecca A. Lovelace a/k/a Becky M. Lovelace a/k/a Becky Lovelace	Chevron U.S.A. Inc.	Not Less than 1/8	1059/402
				Chevron U.S.A. Inc. EQT Aurora LLC	EQT Aurora LLC CNX Gas Company LLC	Assignment Assignment	47/1 53/571
Tract ID	Tax Map & Parcel	Title Opinion QLS #	Surface Owner	Grantor, Lessor, etc	Grantee, Lessee, etc	Royalty	Book/Page
79B	p/o 15-13-19	191813000	Kathleen E. Zien, et al	Ridgetop Ten LLC  Divot Energy Consultants, LLC NMC Land Management, LLC John C. Henderson Ethan J. Henderson James F. Henderson, II Robert Bruce Knight, as Successor Trustee of The Knight Revocable Trust under Declaration of Trust Ownership dated February 27th, 2004, and unrecorded in Tulsa County, State of Oklahoma	CNX Gas Company LLC  CNX Gas Company LLC CNX Gas Company LLC CNX Gas Company LLC CNX Gas Company LLC CNX Gas Company LLC CNX Gas Company LLC	Not Less than 1/8  Not Less than 1/8 Not Less than 1/8 Not Less than 1/8 Not Less than 1/8 Not Less than 1/8 Not Less than 1/8	1238/354  1241/681 1242/7 1210/95 1210/89 1211/23 1210/652
				Jan L. Yanni and Thomas D. Yanni, wife and husband	CNX Gas Company LLC	Not Less than 1/8	1241/675
				Beth Leadbetter Gordon & Leonard B. Gordon, wife and husband	SWN Production Company, LLC	Not Less than 1/8	1209/531
				Martha Ann Leadbetter Young Rebecca Ann Murrah Lovelace & Robert Larry Lovelace, wife and husband	SWN Production Company, LLC SWN Production Company, LLC	Not Less than 1/8 Not Less than 1/8	1211/52 1205/625
				SWN Production Company, LLC Expand Appalachia LLC	Expand Appalachia LLC CNX Gas Company LLC	Merger Agreement	57/407 1241/603
Tract ID	Tax Map & Parcel	Title Opinion QLS #	Surface Owner	Grantor, Lessor, etc	Grantee, Lessee, etc	Royalty	Book/Page
86B	p/o 15-13-18	191807000	Wolf Run Baptist Chruch	Resource Minerals Headwater I, LP  SWN Production Company, LLC Expand Appalachia LLC	SWN Production Company, LLC  Expand Appalachia LLC CNX Gas Company LLC	Not Less than 1/8  Merger Agreement	1201/529  57/407 1241/603
Tract ID	Tax Map & Parcel	Title Opinion QLS #	Surface Owner	Grantor, Lessor, etc	Grantee, Lessee, etc	Royalty	Book/Page
87	15-13-18.1	191809000	Wolf Run Baptist Chruch	CNX Resource Holdings LLC	CNX Gas Company LLC	Fee	1238/524
Tract ID	Tax Map & Parcel	Title Opinion QLS #	Surface Owner	Grantor, Lessor, etc	Grantee, Lessee, etc	Royalty	Book/Page
88A	p/o 15-13-18 p/o 15-13-19	191718000	Wolf Run Baptist Chruch, et al	Jeffrey Whipkey and Debra Whipkey, husband and wife  NPAR, LLC	NPAR, LLC  Chief Exploration & Development LLC Radler 2000 Limited Partnership	Not Less than 1/8  Assignment	702/318  24/466

10/24/2025



				Chief Exploration & Development LLC Radler 2000 Limited Partnership NPAR, LLC Chevron U.S.A Inc. EQT Aurora LLC		Chevron U.S.A Inc.  Chevron U.S.A Inc. EQT Aurora LLC CNX Gas Company LLC	Assignment  Assignment Assignment	26/130  756/332 47/1 53/589
Tract ID	Tax Map & Parcel	Title Opinion QLS #	Surface Owner	Grantor, Lessor, etc		Grantee, Lessee, etc	Royalty	Book/Page
89A	15-13-12	191814000 191805000	Martin Hewitt, et ux	Martin Hewitt and Terri Hewitt, husband and wife  McMurray Land Management, LLC		McMurray Land Management, LLC  CNX Gas Company LLC	Not Less than 1/8  Assignment	1188/711  52/560
Tract ID	Tax Map & Parcel	Title Opinion QLS #	Surface Owner	Grantor, Lessor, etc		Grantee, Lessee, etc	Royalty	Book/Page
89B	15-13-20	191814000 191805000	Martin Hewitt, et ux	Martin Hewitt and Terri Hewitt, husband and wife  McMurray Land Management, LLC		McMurray Land Management, LLC  CNX Gas Company LLC	Not Less than 1/8  Assignment	1188/711  52/560
Tract ID	Tax Map & Parcel	Title Opinion QLS #	Surface Owner	Grantor, Lessor, etc		Grantee, Lessee, etc	Royalty	Book/Page
90	15-13-23.1	191803000	Michael A. Dunn, et ux	Michael A. Dunn and Kandy R. Dunn, husband and wife SWN Production Company, LLC Expand Appalachia LLC		SWN Production Company, LLC Expand Appalachia LLC CNX Gas Company LLC	Not Less than 1/8 Merger Agreement	1199/245 57/407 1241/603
Tract ID	Tax Map & Parcel	Title Opinion QLS #	Surface Owner	Grantor, Lessor, etc		Grantee, Lessee, etc	Royalty	Book/Page
91	15-10-10	304593000	Michael A. Dunn, et ux	Michael A. Dunn and Kandy R. Dunn, husband and wife SWN Production Company, LLC Expand Appalachia LLC		SWN Production Company, LLC Expand Appalachia LLC CNX Gas Company LLC	Not Less than 1/8 Merger Agreement	1199/245 57/407 1241/603
Tract ID	Tax Map & Parcel	Title Opinion QLS #	Surface Owner	Grantor, Lessor, etc		Grantee, Lessee, etc	Royalty	Book/Page
93	15-13-23.2	191802000	Marsha Ann Foster	Golden Eagle Resources II, LLC Marsha Ann Foster		CNX Gas Company LLC CNX Gas Company LLC	Not Less than 1/8 Not Less than 1/8	1212/315 1239/276
Tract ID	Tax Map & Parcel	Title Opinion QLS #	Surface Owner	Grantor, Lessor, etc		Grantee, Lessee, etc	Royalty	Book/Page
94	15-13-23	191801000	Marsha Ann Foster, et vir	Marsha Ann Foster and Aaron Matthew Foster, her husband  American Petroleum Partners Operating, LLC High Road Operating LLC TH Exploration, LLC EQT TGHl Exploration LLC		American Petroleum Partners Operating, LLC  High Road Operating LLC TH Exploration, LLC EQT TGHl Exploration LLC CNX Gas Company LLC	Not Less than 1/8  Name Change Assignment Name Change Assignment	957/631 987/314 44/254 49/249 2/463 53/571
Tract ID	Tax Map & Parcel	Title Opinion QLS #	Surface Owner	Grantor, Lessor, etc		Grantee, Lessee, etc	Royalty	Book/Page
110	p/o 15-13-18 p/o 15-13-18.1 p/o 15-13-18.2	191808000 304594000	West Virginia Dept. of Transportation	The West Virginia Department of Transportation, Division of Highways		CNX Gas Company LLC	Not Less than 1/8	1234/641
Tract ID	Tax Map & Parcel	Title Opinion QLS #	Surface Owner	Grantor, Lessor, etc		Grantee, Lessee, etc	Royalty	Book/Page
111	p/o 15-13-21	191804000	West Virginia Dept. of Transportation	The West Virginia Department of Transportation, Division of Highways		CNX Gas Company LLC	Not Less than 1/8	1234/641
Tract ID	Tax Map & Parcel	Title Opinion QLS #	Surface Owner	Grantor, Lessor, etc		Grantee, Lessee, etc	Royalty	Book/Page
112	p/o 15-13-20	191814000 191805000	West Virginia Dept. of Transportation	The West Virginia Department of Transportation, Division of Highways		CNX Gas Company LLC	Not Less than 1/8	1234/641



CNX Center  
1000 Horizon Vue Drive  
Canonsburg, PA 15317-6506  
724-485-4000  
cnx.com

October 1, 2025

West Virginia Department of Environmental Protection  
Office of Oil & Gas  
601 57th Street, SE  
Charleston, WV 25304-2345

RECEIVED  
Office of Oil and Gas

OCT 02 2025

WV Department of  
Environmental Protection

**RE: MAJ8JHSM (47-051-02550) - \*MODIFICATION\* Horizontal Drilling Permit Application**

To Whom It May Concern:

CNX Gas Company LLC (CNX) is requesting a modification to extend the subject horizontal lateral well permit. The subject MAJ8 Marcellus well is in Marshall County.

CNX would like to use the expedited review process for the MAJ8JHSM modification application and have enclosed a check for \$7,500.00. CNX previously permitted the "MAJ8JHSM" in May 2025.

If any further information or correspondence is required, please contact me at (724) 485-4035 or [ErikaWhetstone@cnx.com](mailto:ErikaWhetstone@cnx.com).

Sincerely,

Erika Whetstone

CK# 2140053929

AMT \$ 7,500.00

10/24/2025