

39°50'00"

Latitude

80°32'30"

Longitude

+

1.31s
1.36w

Topo Location

7.5' Loc. _____ 15' Loc. _____
(calc.) _____

Company Manufact L&HT

Farm Samuel Howard 2744

15' Quad _____
(sec.)

7.5' Quad Cameron

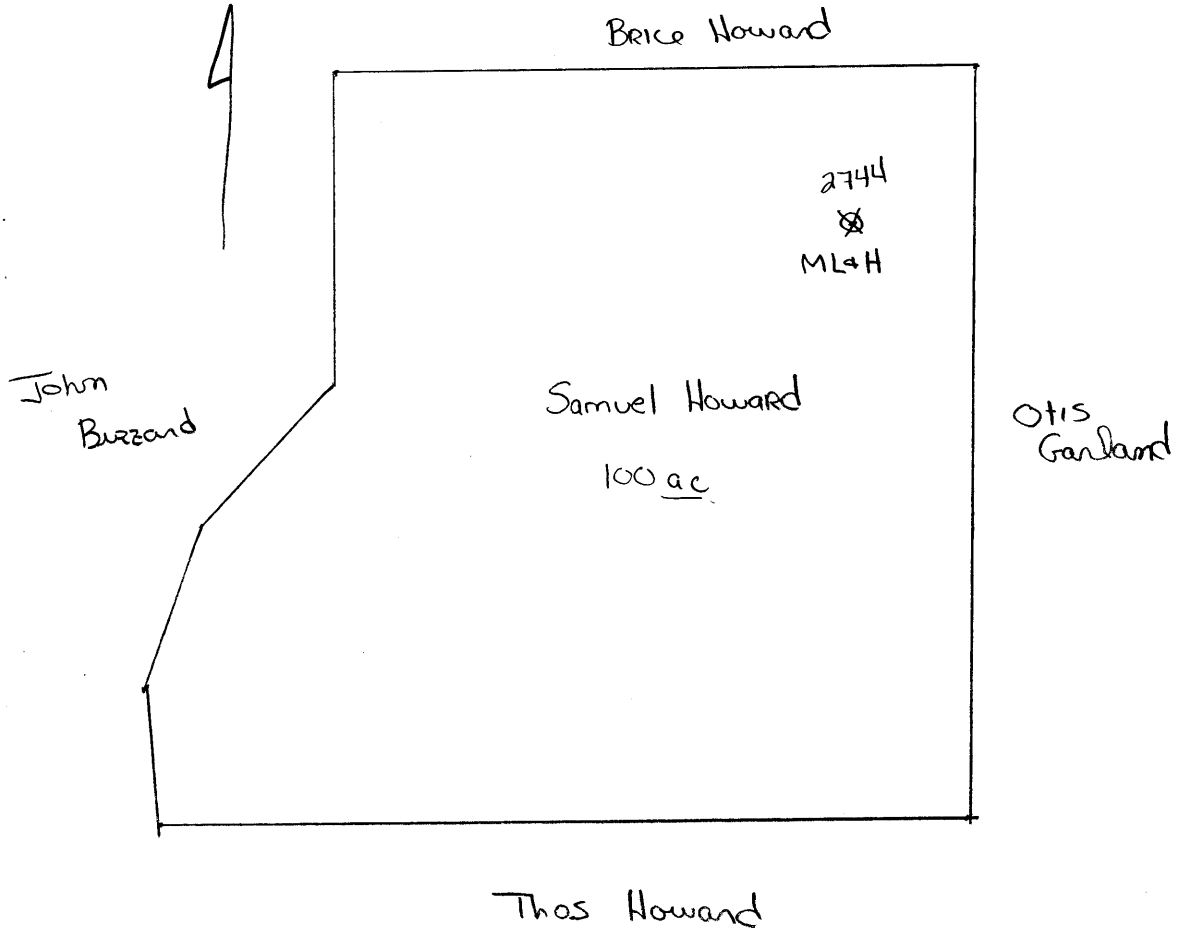
District Liberty

WELL LOCATION PLAT

County OSI **Permit** 30002

liberty dist

Plugging Affidavit
Nov 5, 1930



Marsh 2A

Liberty District, Marshall County, W. Va.

The Manufacturers Light & Heat Co., 800 Union Trust Bldg.,
Pittsburgh, Pa.

On 155 acres, surface owned by Samuel Howard Heirs, Cameron, W. Va.,
and mineral rights by MIAH Co., Pittsburgh, Pa.

Elevation, 1265 A.S.L.

10" casing, 229'; 8 1/2", 1313'; 6-5/8", 2038'; conductor, 14'.

Coal was encountered at 530-535, 792-797, and 890-895'. (and 260-262')

No liners used.

Abandonment reported to Dept. of Mines Nov. 21, 1930.

	Top.	Bottom.
Line and slate	0	- 260
Native coal	260	- 262
Waynesburg Coal	530	- 535
Mapletown Coal	792	- 797
Pittsburgh Coal	890	- 895
Murphy Sand	1000	- 1018
Little Dunkard Sand	1278	- 1285
Big Dunkard Sand	1395	- 1428
Gas Sand	1533	- 1608
1st Salt Sand	1628	- 1673
2nd Salt Sand	1710	- 1760
3rd Salt Sand	1865	- 1897
Merton Sand (gas from 1922-1936')	1900	- 1941
Big Lime	2000	- 2056
Big Injun Sand (show of gas at 2100')	2056	- 2308
50-Ft. Sand	2659	- 2692
Sand	2858	- 2868
Sand	2873	- 2878
Sand	2881	- 2898
Gordon Sand (gas at 2910-2915')	2902	- 2931
Total depth		3021

MARS-2-A