

Latitude

Longitude

+
 |
 1.70s
 |
 1.97w

Topo Location

7.5' Loc. _____ 15' Loc. _____
 _____ (calc.) _____

Company Manupad Lt+Ht

Farm August Werd # 3308

15' Quad _____
(sec.)

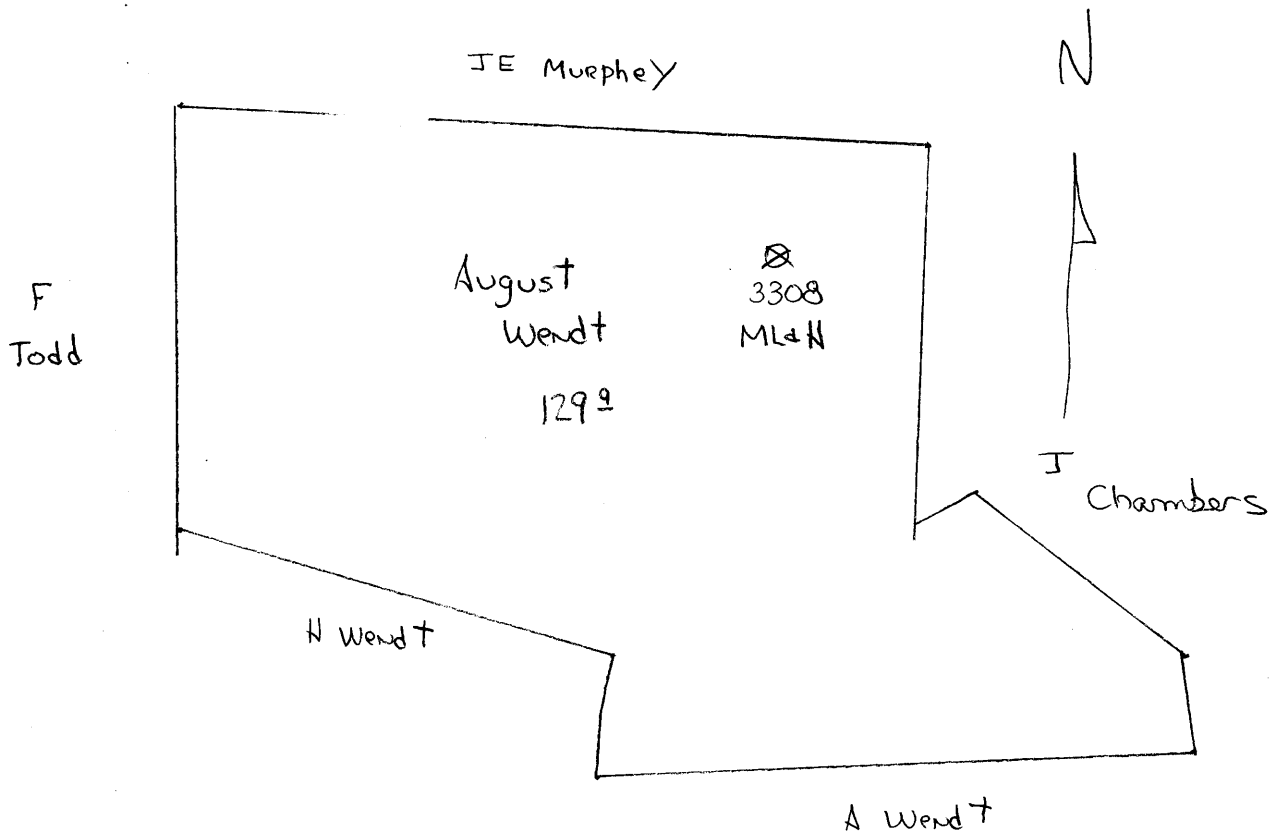
7.5' Quad Cameron

District Liberty

WELL LOCATION PLAT

County 051 Permit 30037

Liberty dist



Liberty District, Marshall County, W. Va.
 Manufacturers Light & Heat Co., 800 Union Tr. Bldg., Pittsburgh, Pa.
 On 500 acres, surface owned by August Wendt, Cameron, W. Va., and
 mineral rights by ML&H Co., Pittsburgh, Pa.

Drilled prior to 1929.

Elevation, 1427' B.

16" conductor; 10" casing, 216'; 8", 1445'; 6-5/8", 2055'.

No packer. No liners used.

Coal was encountered at 630-635, 820-825, 920-925.

Abandonment reported to Dept. of Mines August 2, 1934.

Well was not shot.

Water "not stated".

	Top.	Bottom.
Waynesburg Coal	630	- 635
Mapletown Coal	820	- 825
Pittsburgh Coal	920	- 925
Little Dunkard Sand	1320	- 1340
Big Dunkard Sand	1430	- 1485
Gas Sand	1570	- 1620
Salt Sand	1755	- 1790
2nd Salt Sand	1895	- 1968
Maxton Sand	1978	- 2020
Big Line	2046	- 2085
Big Injan Sand	2085	- 2340
Pink rock	2790	- 2815
50-Ft. Sand (gas at 2874')	2872	- 2914
Gordon Sand (gas at 2975')	2940	- 2978
Slate, to bottom	2978	- 3073

MARS-37-A