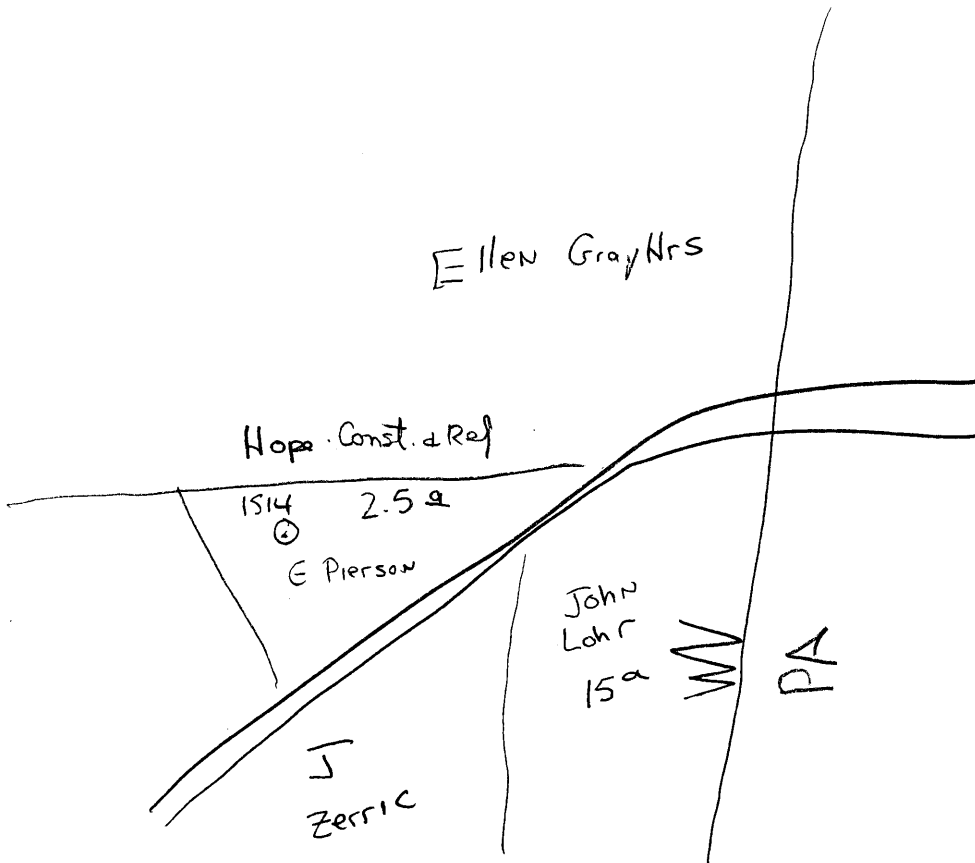


Liberty dist



Liberty District, Marshall County, W. Va.
 Hope Cons. & Ref. Co., 445 W. Main St., Clarksburg, W. Va.
 On $2\frac{1}{2}$ acres, surface owned by Wm. Johnson, Hed, Pa.
 Elevation, 1015' L.

6-5/8" casing, 2058'; 5-3/16", 2820'; 2" tubing, 2971'.

Coal was encountered at 855-861'.

Abandonment reported to Dept. of Mines April 22, 1935.

Fresh water at 853 and 1072'.

Exhausted to extent that it is no longer commercially productive.

MARS-50-A

	Top.	Bottom.
Pittsburgh Coal	855	- 861
Murphy Sand	1070	- 1090
Little Dunkard Sand	1245	- 1275
Big Dunkard Sand	1345	- 1450
First Salt Sand	1630	- 1680
Second Salt Sand	1768	- 1870
Maxton Sand	2000	- 2030
Little Lime	2040	- 2046
Pencil Cave	2046	- 2050
Big Lime	2050	- 2110
Big Injun Sand	2110	- 2338
Gordon Stray Sand	2891	- 2910
Gordon Sand (oil and gas, 2966')	2953	- 2981
Total depth		2981