

**Latitude**

**Longitude**

	1.935
	1.13w

**Topo Location**

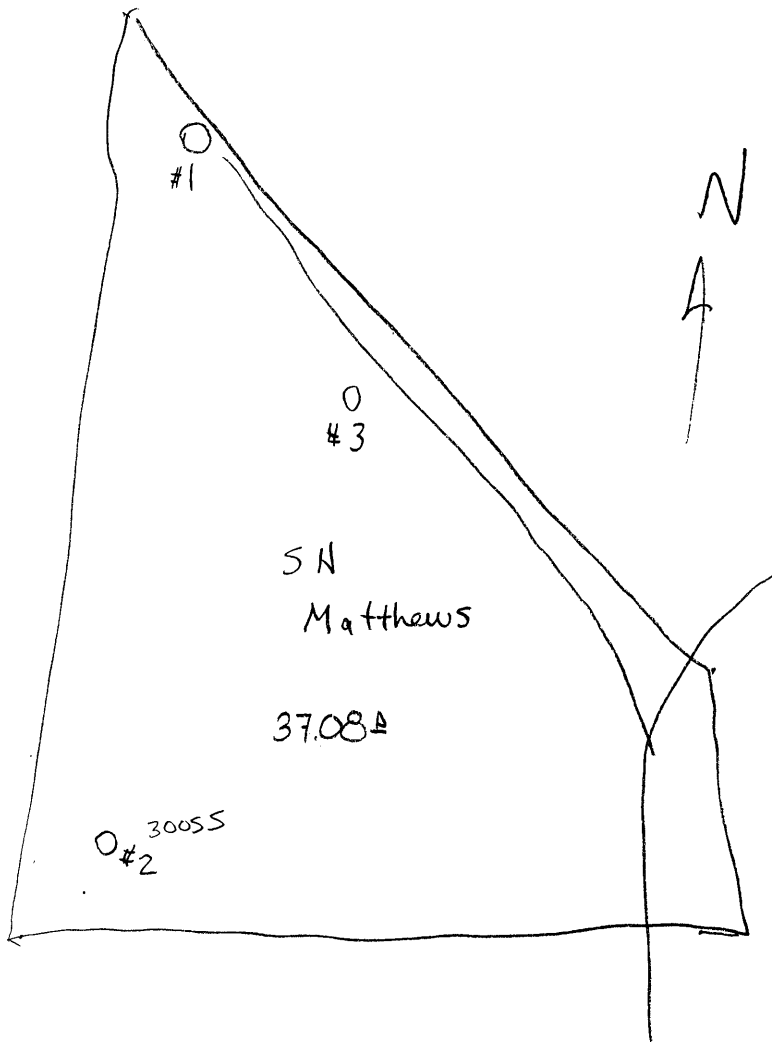
7.5' Loc. \_\_\_\_\_ 15' Loc. \_\_\_\_\_  
 \_\_\_\_\_ (calc.) \_\_\_\_\_

**Company** GB+AG Patterson  
**Farm** SH+Olive Mathews #2  
**15' Quad** \_\_\_\_\_  
 (sec.)  
**7.5' Quad** Cameron  
**District** Liberty

**WELL LOCATION PLAT**

**County** 051 **Permit** 30055

Liberty, dist



30055

Liberty District, Marshall County, W. Va.  
 Guy B. and A. G. Patterson, Cameron, W. Va.  
 On 38 acres, surface and mineral rights owned by S. H. and Olive  
 Mathews, Cameron, W. Va.

Drilled in 1920.

Elevation, 1260'.

18" conductor, 20'; 10" casing, 189'; 8 1/2", 1419'; 6-5/8", 2047'.

Coal was encountered at 805-812 and 897-903'.

Abandonment reported to Dept. of Mines August 6, 1935.

Well was shot at 2855 and 2924'.

	Top.	Bottom.
Waynesburg Coal, black, hard	708	- 711
Mapletown Coal, black, hard	805	- 812
Pittsburgh Coal, black, hard	897	- 905
Little Dunkard Sand	1290	- 1335
Big Dunkard Sand	1408	- 1455
Gas Sand	1475	- 1590
Salt Sand	1655	• 1850
Maxton Sand	1870	- 1950
Little Lime	1950	- 1970
Pencil Cave	1970	- 2000
Big Lime	2000	- 2065
Big Injan Sand (gas at 2075-2152')	2065	- 2310
50-Ft. Sand (gas, 2855')	2853	- 2886
Gordon Stray Sand (gas, 2924')	2921	- 2948
5th Sand (gas, 2993')	2990	- 2997
Total depth		3027

MARS-55-A