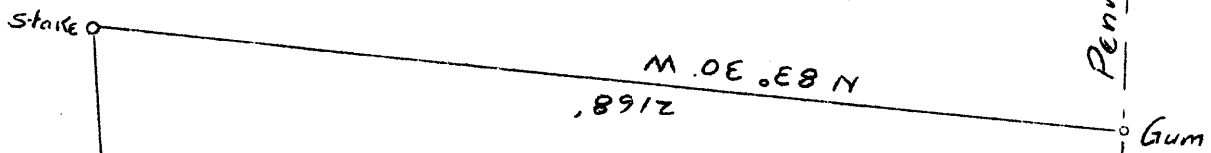


LATITUDE 39° 55'

LONGITUDE 80° 30'

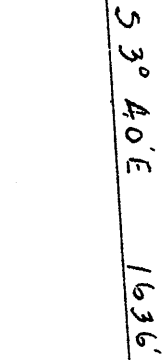
Sherrick



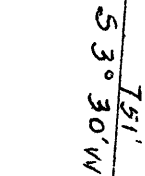
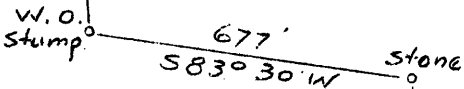
Penn-W.Va. Line



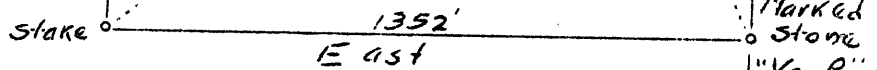
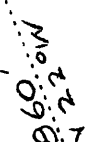
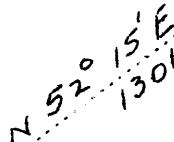
W.L. Doman
100.0 A
D.B. 109 - P. 245



C.M. Phillips



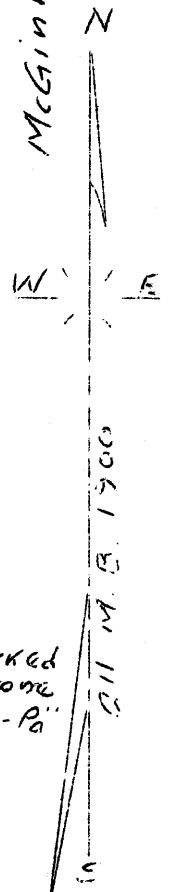
W.L. Doman No. 1
To be plugged
Elev. 1284'



McGinnis Hrs.

1.12S

1.07W



Company	B. L. Frye
Address	Cameron, W. Va.
Farm	W. L. Doman
Tract	1 Acres 100 Lease No.
Well (Farm) No.	1 Serial No.
Quadrangle	Cameron
County	Marshall
District	Webster
Engineer	Gordon W. Sammons
Engineer's Registration No.	509
File No.	Drawing No
Date	12-5-36 Scale 1" 400'

STATE OF WEST VIRGINIA
Department of Mines
OIL AND GAS DIVISION
Charleston

WELL LOCATION MAP

File No. MARS-68 A

+Denotes location of well on U. S. Topographic Maps, scale 1 to 62,500 latitude and longitude lines being represented by border lines as shown

-Denotes one inch spaces on border line of original tracing.