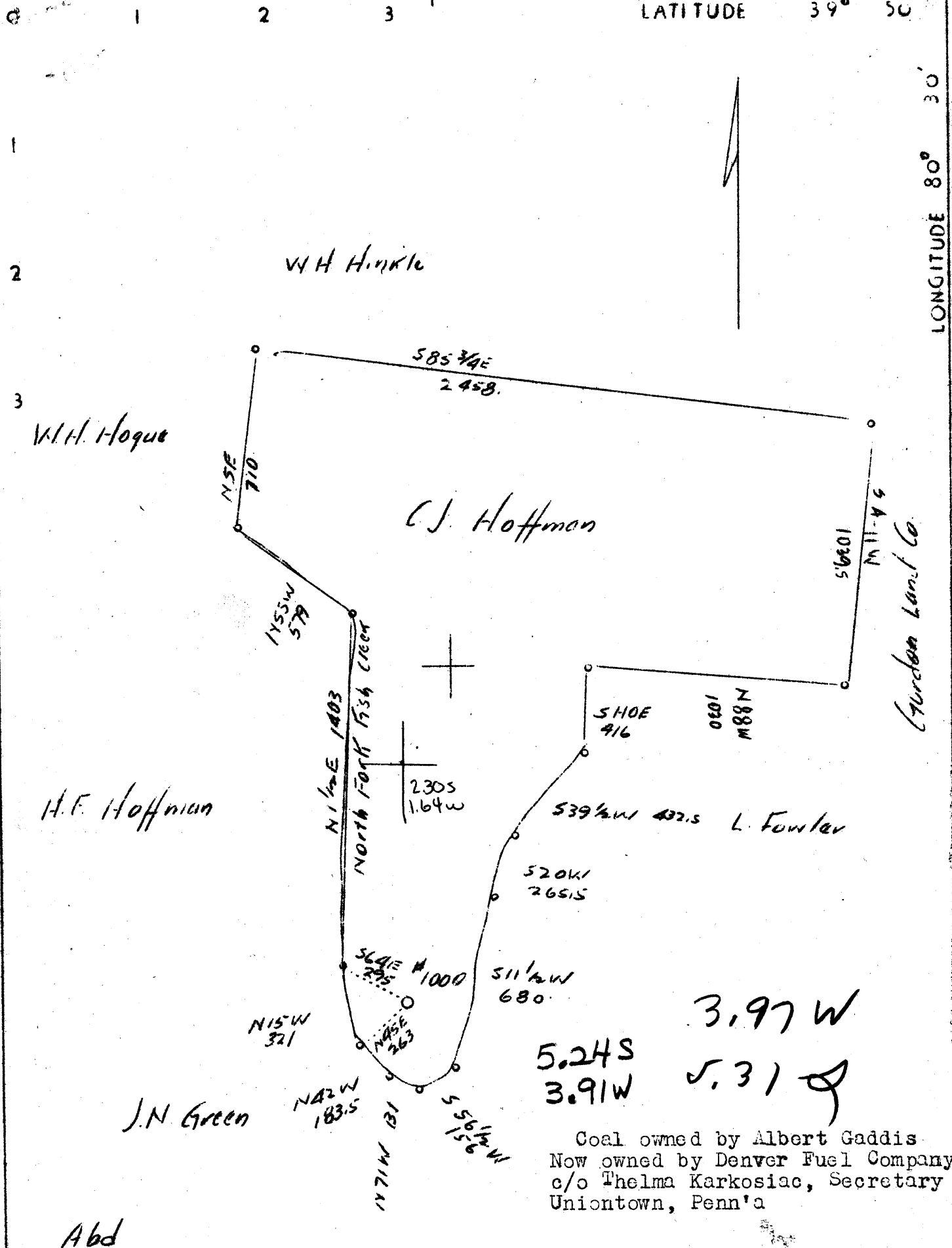


39°47'30"

LATITUDE 39° 50'

LONGITUDE 80° 30'

80°32'30"



Coal owned by Albert Gaddis
 Now owned by Denver Fuel Company
 c/o Thelma Karkosiac, Secretary
 Uniontown, Penn'a

Abd

Company The Manufacturers Light & Heat
 Address 800 Union Trust Bldg., Pgh., Pa
 Farm C. J. & J. L. Hoffman
 Tract Acres 82 Lease No. 2872
 Well (Farm) No. 1 Serial No. 1000
 Elevation (Spirit Level) 857.85
 Quadrangle Cameron **3E**
 County Marshall District Liberty
 Engineer Donald K. Bell
 Engineer's Registration No. _____
 File No. _____ Drawing No. Y-7-202
 Date 6-29-37 Scale 1" = 500'

STATE OF WEST VIRGINIA
 Department of Mines
 OIL AND GAS DIVISION
 Charleston

WELL LOCATION MAP
 File No. MARS-75A

+ Denotes location of well on U.S. Topographic Maps, scale 1 to 62,500 latitude and longitude lines being represented by border lines as shown

— Denotes one inch spaces on border line of original tracing.

75A

Liberty District, Marshall County, W. Va.

By Manufacturers Light & Heat Co.

Completed December 23, 1901.

Abandoned.

Record from Mr. Schillhalm Sept. 30, 1939.

	Top.	Bottom.
Pittsburgh Coal	618	- 624
Murphy Sand	822	- 857
Little Dunkard Sand	1080	- 1096
Big Dunkard Sand	1104	- 1204
Gas Sand	1366	- 1413
Salt Sand	1494	- 1552
Maxton Sand	1678	- 1732
Big Line	1754	- 1818
Big Injun Sand	1828	- 2054
50-Foot Sand	2585	- 2600
Gordon Stray Sand	2617	- 2622
Gordon Sand	2647	- 2667
Fourth Sand	2713	- 2725
Fifth Sand	2745	- 2748
Total depth		3005

Liberty District, Marshall County, W. Va.
 By Wheeling Natural Gas Co.
 Located one mile west of Bellton (Denver Station).
 Elevation, 850' B.

	Top.	Bottom.
Bluff Sand	300	- 305
Waynesburg Coal	305	- 308
Mapletown (Sewickley) Coal	500	- 504
Pittsburgh Coal	618	- 634
Murphy Sand (hole full of water at 828')	822	- 857
Little Dunkard Sand	1080	- 1096
Big Dunkard Sand	1104	- 1204
Sand, (Second Cow Run) (little gas at 1345')	1338	- 1356
Gas Sand (Second Cow Run)	1366	- 1413
Salt Sand	1494	- 1552
Salt Sand	1615	- 1650
Maxton Sand (little gas at 1708')	1678	- 1732
Big Lime	1754	- 1818
Pencil Cave	1818	- 1828
Big Injun Sand	1828	- 2054
Fifty-foot Sand	2585	- 2600
Gordon Stray Sand	2617	- 2622
Gordon Sand (good)	2647	- 2667
Shell	2690	- 2692
Fourth Sand	2713	- 2725
Fifth Sand (gas)	2745	- 2748
Unrecorded	2748	- 3005