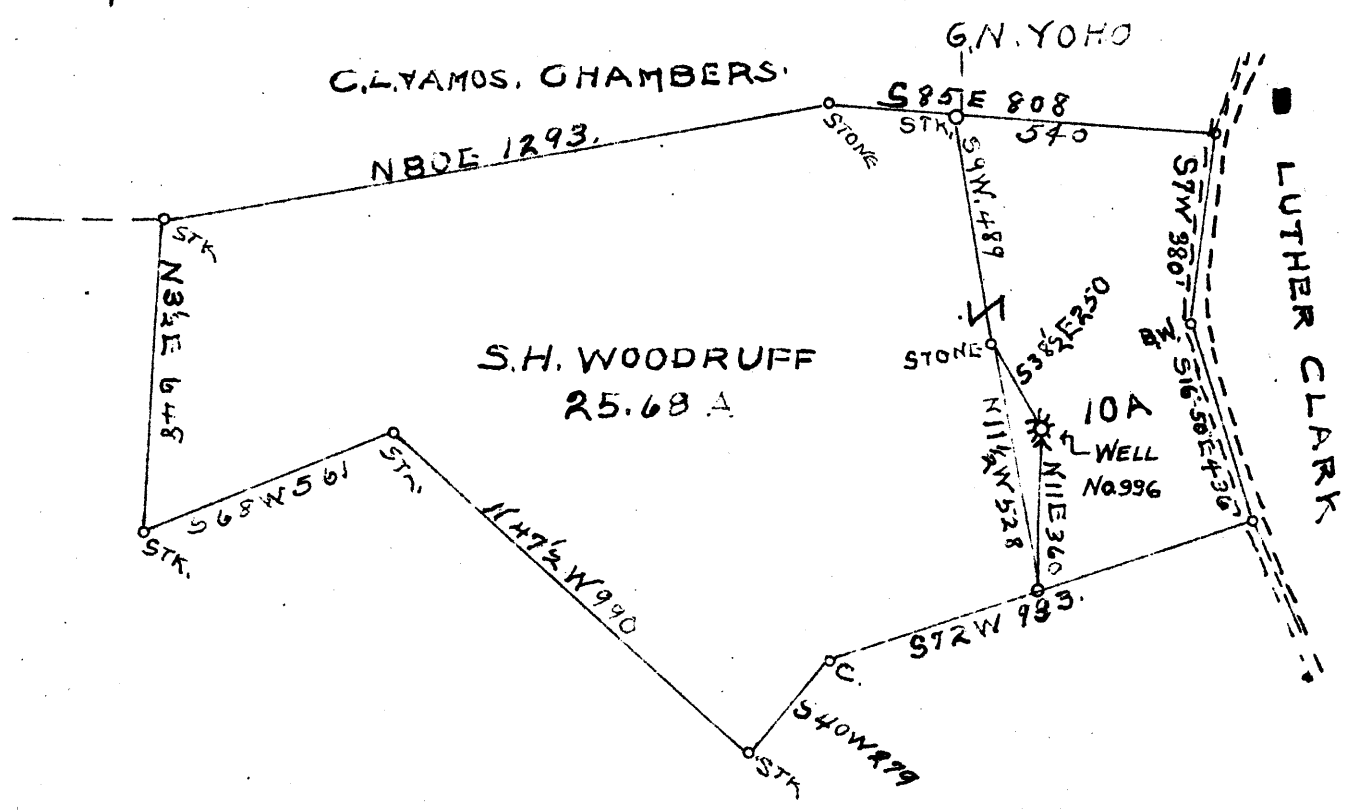
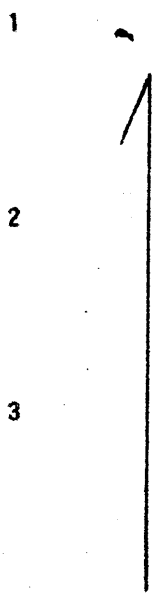


0 1 2 3 Latitude 39 50'

Longitude 80 35'



3.56S 3.6S
1.66W 1.67W

WELL TO BE ABANDONED ✓

Company CARNEGIE NATURAL GAS CO
 Address 1014 FRICK BLDG, PITTSBURGH, PA.
 Farm S. H. WOODRUFF
 Tract _____ Acres 25.68 Lease No. 9967-48
 Well (Farm) No. 1 Serial No. 996
 Elevation (Spirit Level) 1450
 Quadrangle CAMERON S.E.
 County MARSHAL District LIBERTY
 Engineer Glenn H. Huey
 Engineer's Registration No. _____
 File No. _____ Drawing No. _____
 Date 6-25-1927 Scale 1" = 400'

STATE OF WEST VIRGINIA
 DEPARTMENT OF MINES
 OIL AND GAS DIVISION
 CHARLESTON

WELL LOCATION MAP
 FILE NO. Mars-77-A

+ Denotes location of well on United States Topographic Maps, scale 1 to 62,500, latitude and longitude lines being represented by border lines as shown.
 - Denotes one inch spaces on border line of original tracing.

S. H. WOODHUFF NO. 1 (996) WELL.

Liberty District, Marshall County, W. Va.
 By Carnegie Natural Gas Co.
 Map, Cameron SE.
 On 26 acres.

Drilling commenced Sept. 2, 1920; completed, Oct. 9, 1920.

Deepened July 12, 1923, from 3067'.

Plugged Dec. 30, 1937.

Open flow, 4,000,000 cu. ft. (Gordon Stray Sand); 700# R. P.

Record from Wilcox Sept. 27, 1939.

MARS-77A

	Top.	Bottom.
Mapletown (Sewickley) Coal	1026	- 1030
Pittsburgh Coal	1120	- 1126
Little Dunkard Sand	1500	- 1525
Big Dunkard Sand	1600	- 1660
1st Gas Sand	1740	- 1810
1st Salt Sand	1850	- 1960
2nd Salt Sand	2085	- 2120
Marion Sand	2135	- 2153
Little Lime	2180	- 2190
Pencil Cave	2210	- 2220
Big Lime	2220	- 2250
Big Injun Sand (show gas, 2350')	2250	- 2540
50-Ft. Sand	2880	- 2928
30-Ft. Sand	3035	- 3045
Gordon Stray Sand (gas at 3060-66'; 4,000,000 cu. ft.; 700# R. P.)	3057	- 3095
Gordon Sand (show oil, 3139')	3116	- 3149
4th Sand	3150	- 3165
5th Sand	3224	- 3227
Total depth		3275