

Latitude

1.645
.10w

Longitude

Topo Location

7.5' Loc. _____ 15' Loc. _____
_____ (calc.) _____

Company Manufact L&H

Farm Mustang Hrs # 1-1744

15' Quad _____
(sec.)

7.5' Quad Cameron

District Liberty

WELL LOCATION PLAT

County 051 **Permit** 30087

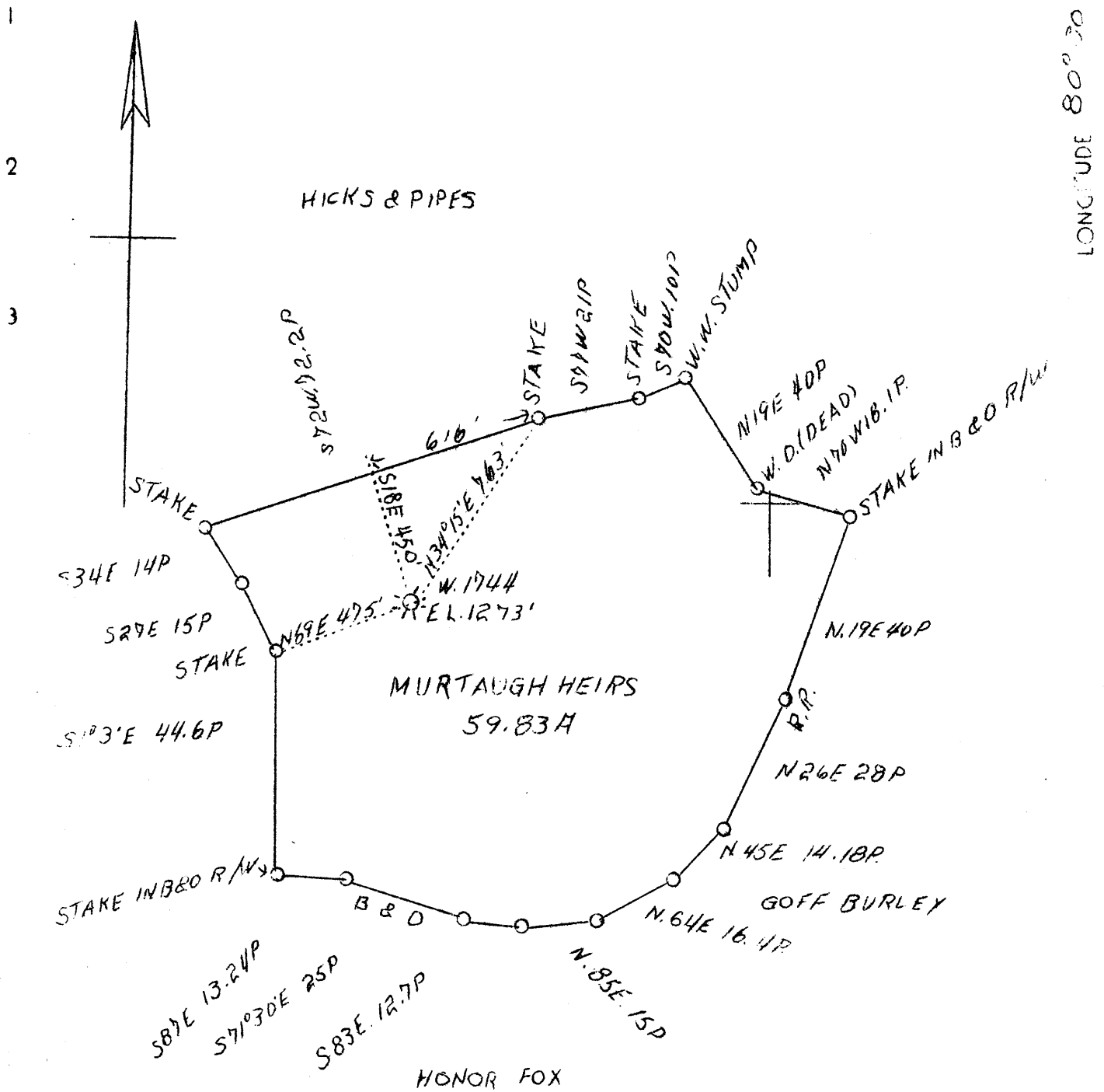
1

2

3

LATITUDE 39° 50'

LONGITUDE 80° 30'



COAL OWNED BY STATE OF WEST VIRGINIA

WELL TO BE ABD.

4.36 S
2.33 W

4.4 S

2.4 W

Company Mfg. Light & Heat Co.
 Address Union Tr. Bldg., Pittsburgh, Pa.
 Farm Murtaugh Heirs
 Acres 59.83
 Lease No. 4900
 Well (Farm) No. 1
 Serial No. 1744
 Elevation 1273' (Spirit Level)
 Quadrangle Cameron S. E. 1/4 **SE**
 County Marshall
 District Liberty
 Engineer H. D. O'Connor
 Eng. Reg. No. 1
 Drawing No. Y-8-6
 Date June 8, 1938
 Scale 1" = 500'

STATE OF WEST VIRGINIA
 Department of Mines
 OIL & GAS DIVISION
 Charleston

WELL LOCATION MAP

File No. Mars-87-A

X Denotes location of well on U. S. Topographic Maps, scale 1 to 62,500, latitude and longitude lines being represented by border lines as shown.

- Denotes one inch spaces on border line of original tracing.