

LATITUDE 39° 50'

1.75
3.54 W

+ 1.73S
3.54W

LONGITUDE 80° 30'

BRICE HOWARD

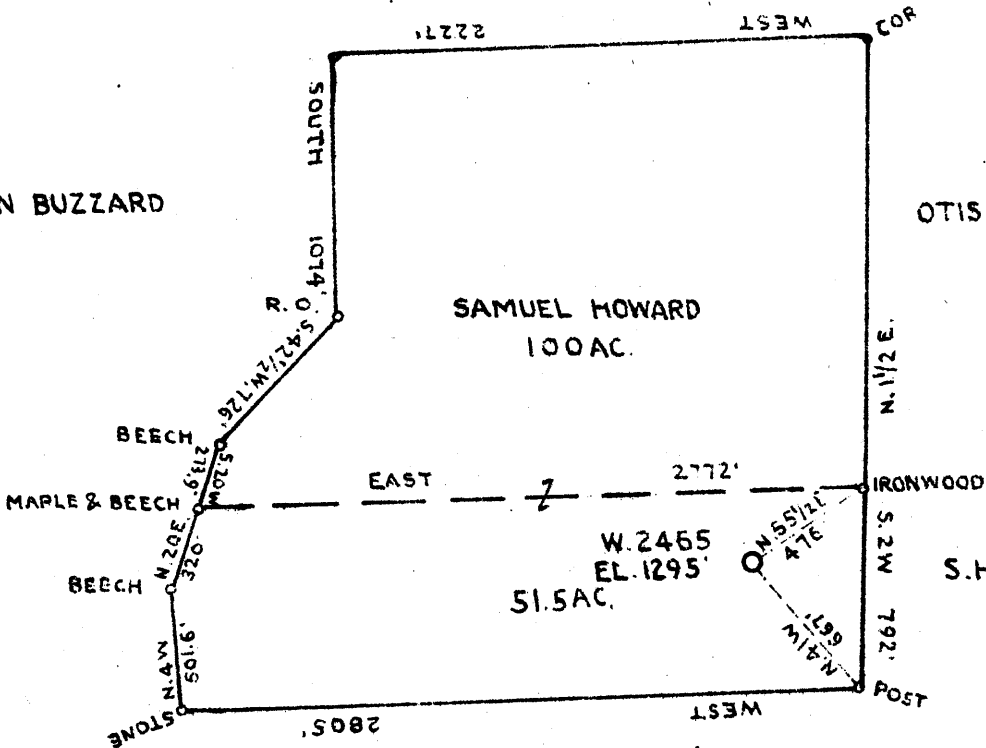
JOHN BUZZARD

OTIS GARLAND

SAMUEL HOWARD
100 AC.

S. H. MATHEWS

L. H. MCCORMICK



COAL OWNED BY SAMUEL HOWARD HEIRS

ABANDONMENT X

COMPANY THE MANUFACTURERS LIGHT AND HEAT CO.
 ADDRESS 800 UNION TRUST BLD'G. PITTSBURGH PA.
 FARM SAMUEL HOWARD
 TRACT ACRES 151.5 LEASE NO. 2270
 WELL (FARM) NO. 2 SERIAL NO. 2465
 ELEVATION (SPIRIT LEVEL) 1295' ±
 QUADRANGLE CAMERON SE
 COUNTY MARSHALL DISTRICT LIBERTY
 ENGINEER *J. L. ...*
 ENGINEER'S REGISTRATION NO.
 FILE NO. DRAWING NO. Y-10-974
 DATE DECEMBER 10-1943 SCALE 1"=800'

STATE OF WEST VIRGINIA
 DEPARTMENT OF MINES
 OIL AND GAS DIVISION
 CHARLESTON

WELL LOCATION MAP
 FILE NO. *MARS-200-A*

+ DENOTES LOCATION OF WELL ON UNITED STATES TOPO-
 GRAPHIC MAPS, SCALE 1 TO 62,500, LATITUDE AND LONGITUDE
 LINES BEING REPRESENTED BY BORDER LINES AS SHOWN
 — DENOTES ONE INCH SPACES ON BORDER LINE OF ORIGINAL
 TRACING

STATE OF WEST VIRGINIA
DEPARTMENT OF MINES
OIL AND GAS DIVISION

246

WELL RECORD

Permit No. 200-H
Drilled in 1919

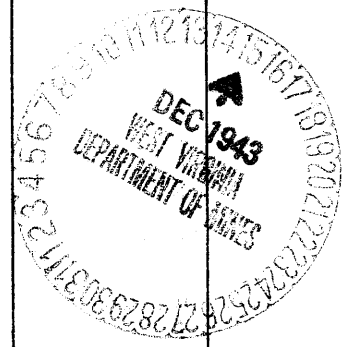
Oil or Gas Well Gas
(KIND)

Company The Mfrs Light & Heat Company
 Address 800 Union Trust Bldg., Pittsburgh, Pa.
 Farm S. & C. Howard Acres 155
 Location (waters) (West - Danville No 2)
 Well No. 1 - 2465 Elev. 1270 ft.
 District Liberty County Marshall
 The surface of tract is owned in fee by Hayes Howard
Box 301 Address Cameron, W. Va.
 Mineral rights are owned by The Mfrs L & H Co.
800 Union Trust Bldg Address Pittsburgh, Pa.
 Drilling commenced 9/10/19
 Drilling completed 11/24/19
 Date Shot From To
 With
 Open Flow 2/10ths Water in 6 5/8 Inch
 /10ths Merc. in Inch
 Volume Cu. Ft.
 Rock Pressure 175 lbs. 1 hrs.
 Oil bbls., 1st 24 hrs.
 Fresh water feet feet
 Salt water feet feet

Casing and Tubing	Used in Drilling	Left in Well	Packers
Size			Kind of Packer
16			
13			
10	320'	-	Size of
8 1/4	1550'	1550'	6 5/8 x 4
6 5/8	2170'	2170'	Depth set
5 3/16			3003
3			Perf. top
2			Perf. bottom
Liners Used			Perf. top
			Perf. bottom

CASING CEMENTED SIZE No. Ft. Date
 COAL WAS ENCOUNTERED AT 770 FEET 48 INCHES
965 FEET 60 INCHES 1046 FEET 60 INCHES
1655 FEET 48 INCHES FEET INCHES

Formation	Color	Hard or Soft	Top	Bottom	Oil, Gas or Water	Depth Found	Remarks
Clay			0	14			
Sand			14	75			
Slate			75	125			
Lime			125	175			
Slate			175	240			
Lime			240	280			
Slate			280	320			
Sand			320	380			
Slate			380	460			
Lime			460	520			
Slate			520	600			
Sand			600	620			
Slate			620	720			
Sand			720	770			
Waynesburg Coal			770	774			
Lime			774	810			
Red Rock			810	820			
Lime			820	890			
Slate			890	905			
Lime			905	965			
Mapletown Coal			965	970			
Lime			970	1000			
Slate			1000	1025			
Gritty Lime			1025	1030			
Slate			1030	1046			
Pittsburgh Coal			1046	1051			
Lime			1051	1100			
Slate			1100	1140			
Sand			1140	1160			
Lime			1160	1200			
Slate			1200	1210			
Sand			1210	1240			
Red Rock			1240	1275			
Lime			1275	1290			
Red Rock			1290	1320			
Lime			1320	1330			
Red Rock			1330	1375			
Lime			1375	1385			
Red Rock			1385	1420			
Slate			1420	1440			
Red Rock			1440	1470			



Formation	Color	Hard or Soft	Top	Bottom	Oil, Gas or Water	Depth Found	Remarks
Little Dunkard			1470	1490			
Slate			1490	1540			
Red Rock			1540	1550			
Little Big Dunkard			1550	1655			
Coal			1655	1659	2 bailers water per hour		
Lime			1659	1680			
Gas Sand			1680	1735			
Coal			1735	1740			
Lime			1740	1780			
Slate			1780	1800			
Salt Sand			1800	1860			
Slate			1860	1870			
2nd Salt Sand			1870	1925			
Lime			1925	1980			
Maxon Sand			1980	2030			
Sand			2030	2125			
Slate			2125	2130			
Little Lime			2130	2150			
Slate or Pencil			2150	2160			
Big Lime			2160	2212			
Big Injun			2212	2468			
Slate & Shells			2468	2650			
Slate			2650	2680			
Lime			2680	2720			
Slate			2720	2800			
Lime			2800	2820			
Slate			2820	2825			
Slate			2825	2835			
Slate & Shells			2835	2860			
50-Foot			2860	2875			
Slate & Shells			2875	3002			
Stray			3002	3030			
Slate			3030	3067			
Gordon			3067	3097			
Slate			3097	3188			
Total depth				3188			

Date December 6th, 194 3

APPROVED THE MANUFACTURERS LIGHT & HEAT CO., Owner

By Harry H. Fowler
Land Dept. (Title) Office Mgr.