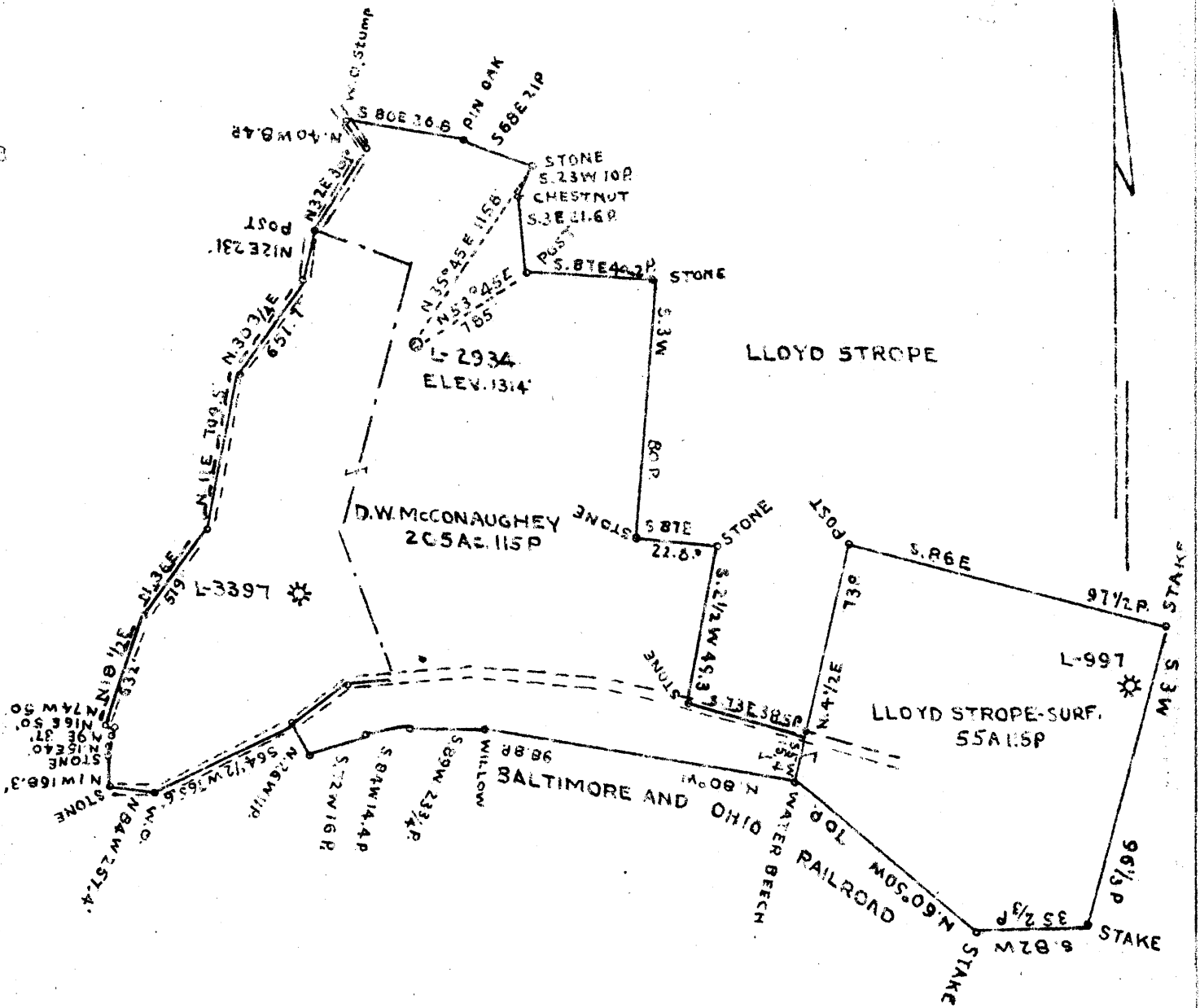


0.155
3.27W

MARY ORELLA McCONAUGHEY



COAL OWNED BY D.W. McCONAUGHEY

- NEW LOCATION
- DRILL DEEPER
- ABANDONMENT

COMPANY THE MANUFACTURERS LIGHT AND HEAT CO.
 ADDRESS 800 UNION TRUST BUILDING PITTSBURGH PA.
 FARM D.W. McCONAUGHEY
 TRACT ACRES 205A-115P LEASE NO. 2841
 WELL (FAPM) NO. 3 SERIAL NO. 2934
 ELEVATION (SPIRIT LEVEL) 1314'
 QUADRANGLE CAMERON SE
 COUNTY MARSHALL DISTRICT CAMERON
 ENGINEER *J. H. Mendenhall*
 ENGINEER'S REGISTRATION NO. _____
 FILE NO. _____ DRAWING NO. Y-11-139
 DATE MAY 4 1945 SCALE 1" = 300'

STATE OF WEST VIRGINIA
 DEPARTMENT OF MINES
 OIL AND GAS DIVISION
 CHARLESTON

WELL LOCATION MAP

FILE NO. MARS-221-A

THIS IS THE LOCATION OF WELL AS FILED STATES FORG.
 OFFICE MARS SCALE 1" = 300'. DISTANCE AND QUANTITY
 OWNED BY IS REPRESENTED BY BORDER LINE OF COLOR

THIS MAP ONE INCH SPACES ON BOUNDARY LINES ARE
 MEASUREMENTS



764

STATE OF WEST VIRGINIA
DEPARTMENT OF MINES
OIL AND GAS DIVISION

WELL RECORD

Permit No. Drilled in 1926

Oil or Gas Well Gas
(KIND)

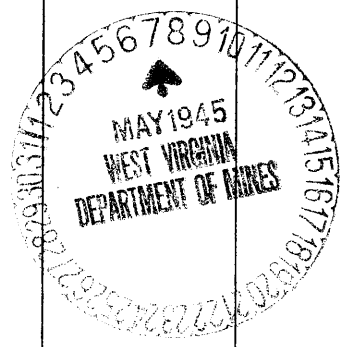
Company The Manufacturers Light & Heat Company
 Address 800 Union Trust Bldg., Pittsburgh, Pa.
 Farm D. W. McConaughy Acres 200
 Location (waters) _____
 Well No. 3 - 2934 Elev. 1314 ft.
 District Cameron County Marshall
 The surface of tract is owned in fee by D. W. McConaughy
 Address Cameron, W.Va.
 Mineral rights are owned by The Mfrs Light & Heat Co.
 Address Pittsburgh, Pa.
 Drilling commenced 1/16/26
 Drilling completed 3/13/26
 Date Shot _____ From _____ To _____
 With _____
 Open Flow _____ /10ths Water in _____ Inch
 _____ /10ths Merc. in _____ Inch
 Volume _____ Cu. Ft.
 Rock Pressure Not taken lbs. _____ hrs.
 Oil _____ bbls., 1st 24 hrs.
 Fresh water _____ feet _____ feet
 Salt water _____ feet _____ feet

Casing and Tubing	Used in Drilling	Left in Well	Packers
Size			
16			Kind of Packer
18			
10	173	-	Size of
8 1/4	1312	1312	
6	2035	2035	Depth set
5 3/16			
3			Perf. top
2			Perf. bottom
Liners Used			Perf. top
			Perf. bottom

CASING CEMENTED _____ SIZE _____ No. Ft. _____ Date _____
 COAL WAS ENCOUNTERED AT 470 FEET 36 INCHES
622 FEET 72 INCHES 822 FEET 36 INCHES
900 FEET 72 INCHES _____ FEET _____ INCHES

Formation	Color	Hard or Soft	Top	Bottom	Oil, Gas or Water	Depth Found	Remarks
Mud			02	12			
Sand			12	20			
Shale			20	100			
Lime			100	150			
Shale			150	210			
Sand			210	240			
Shale			240	315			
Lime			315	370			
Sand			370	405			
Lime & Shale			405	470			
Coal			470	473 ✓			
Shale & Lime			473	570			
Sand			570	622			
Waynesburg Coal			622	628 ✓			
Lime & Shale			628	822			
Mapletown Coal			822	825 ✓			
Lime			825	900			
Pittsburgh Coal			900	906 ✓			
Lime, Slate & Shells			906	1125			
Little Dunkard			1125	1190			
Lime & Slate			1190	1280			
Red Rock			1280	1304			
Little Dunkard			1304	1344			
Slate & Shale			1344	1370			
Sand			1370	1380			
Big Dunkard			1380	1415			
Slate			1415	1430			
Sand			1430	1450			
Shale, Lime & Slate			1450	1515			
Gas Sand			1515	1585			
Slate			1585	1595			
Sand			1595	1605			
Slate & Shells			1605	1654			
Salt Sand			1654	1680			
Slate & Lime			1680	1715			
Sand			1715	1758			
Slate			1758	1785			
Sand			1785	1790			
Slate			1790	1888			

9



Formation	Color	Hard or Soft	Top	Bottom	Oil, Gas or Water	Depth Found	Remarks
2nd Salt Sand			1888	1925			
Sand			1927	1940			
Slate & Lime			1940	1968			
Maxon Sand			1968	2008			
Slate			2008	2032			
Big Lime			2032	2057			
Big Injun			2057	2290			
Slate, Shells, Lime			2290	2650			
Sand			2650	2670			
Slate & Shells			2670	2755			
Pink Rock			2755	2764			
Lime			2764	2770			
Red Rock			2770	2800			
Slate			2800	2850			
50-Foot			2850	2870			
Slate & Shells			2870	2903			
Gordon Sand			2903	2935	Gas 2905		
Slate & Shells			2935	3356			
Total depth				3356			

Date May 5th, 1945

APPROVED THE MANUFACTURERS LIGHT & HEAT COMPANY Owner

By Harry H. Fowler
Land Dept. (Title) Office Manager